

Converting Colors

Android(4290482321)

Have a look what the booklet for
Android(4290482321) contains.

Android(4290482321)	3
<i>Conversions</i>	4
<i>Details</i>	6
<i>Harmonies</i>	11
<i>Previews</i>	23
<i>Color Blindness Simulation</i>	26
<i>CSS Examples</i>	29

Color

Android(4290482321)

Conversions

Conversions Part 1

Format	Color
Hex	BB9091
RGB	187, 144, 145
RGB Percent	73%, 56%, 57%
CMY	0.2667, 0.4353, 0.4314
CMYK	0.00, 0.23, 0.22, 0.27
HSL	359°, 24%, 65%
HSV	359°, 23%, 73%
XYZ	35.5776, 32.5556, 31.1968
YIQ	156.9710, 25.3070, 9.4270

Conversions

Conversions Part 2

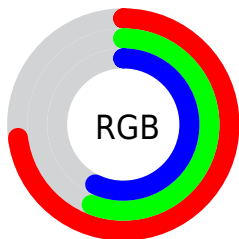
Format	Color
RYB	187, 144, 145
Decimal	12292241
CIELab	63.80, 16.38, 5.74
CIELCh	64, 17.355, 19.298
Yxy	32.5556, 0.3582, 0.3278
Android (android.graphics.Color)	4290482321 (0xFFBB9091)
YUV	156.9710, -5.9017, 26.3354
Hunter-Lab	57.0576, 11.4510, 7.5229

Details

The Android color `4290482321` is a light color, and the websafe version is hex `CC9999`. A complement of this color would be `4287675322`, and the grayscale version is `4288519581`.

A 20% lighter version of the original color is `4294231751`, and `4286930271` is the 20% darker color. If you saturate the color by 10%, you get `4290477439`, and if you desaturate by 10%, it is `4290487203`.

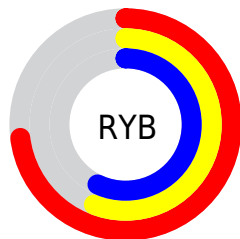
Distribution



Red (73%)

Green (56%)

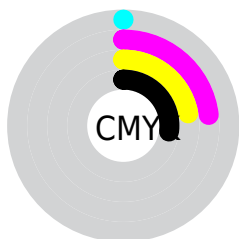
Blue (57%)



Red (73%)

Yellow (56%)

Blue (57%)

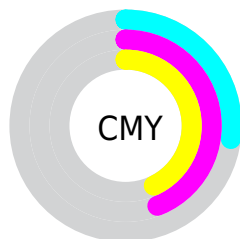


Cyan (0%)

Magenta (23%)

Yellow (22%)

Black (27%)



Cyan (27%)

Magenta (44%)

Yellow (43%)

Brightness & Saturation Gradients

These gradients show how the Android color 4290482321 changes by changing the brightness by 10 percent. The first figure shows a shift by +10% for each color and the second figure -10%.

Similar to the brightness gradients but the following saturation gradients show a change of the Android color 4290482321 by changing the saturation by 10% instead.



4290482321



4290482321

4294967295



4288706167



4294231751



4286930271



4294959843



4285220423



4283576113



4281997596



4280680705



4278190080



4290482321



4290482321



4290477439



4290487203

 4290472812

 4290491830

 4290467930

 4290496712

 4290463048

 4290501594

 4290458422

 4290506220

 4290453539

 4290510847

 4290448657

 4290445316

Harmonies

Analogous

The Analogous color harmony consists of three colors that are next to each other on the color wheel.



4290154657



4290482321



4290220932

Triad

The Triadic color harmony groups three colors that are evenly spaced from another and form a triangle on the color wheel.



4290482321



4287275398



4286750393

Complementary

The Complementary color scheme is a pair of colors which are on the opposite of each other on the color wheel.



4290482321



4287675322

Split Complementary

Split-complementary colors differ from the complementary color scheme. The scheme consists of three colors, the original color and two neighbors of the complement color.



4285833905



4290482321



4286227348

Square

The Square scheme is like the rectangle color scheme, but the four colors are evenly spaced on the color wheel.



4290482321



4288454013



4285637540



4288059576

Rectangle

The Rectangle color scheme consists of four colors that form a rectangle on the color wheel.



4290482321



4289762942



4285637540



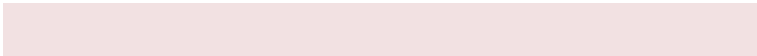
4286357431

Sweetspot

The Sweet Spot groups the original color and five complimentary colors.



4290482321



4294107618



4290416827



4286214513



4294638330



4286216826

Same Dimension

The Same Dimension uses a secret algorithm to generate beautiful new colors.



4290482321



4294094512



4290487440



4284372309



4288544772



4280221697

Inverse Universe

The Inverse Universe completely reimagines the original color for something new.



4290482321



4294094512



4287670203



4284372309



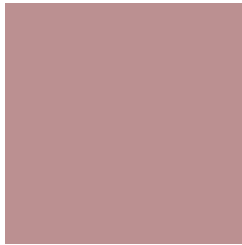
4288544772



4280221697

Previews

White Background



This preview shows how the Android color 4290482321 looks on a white background.

Color Contrast Check

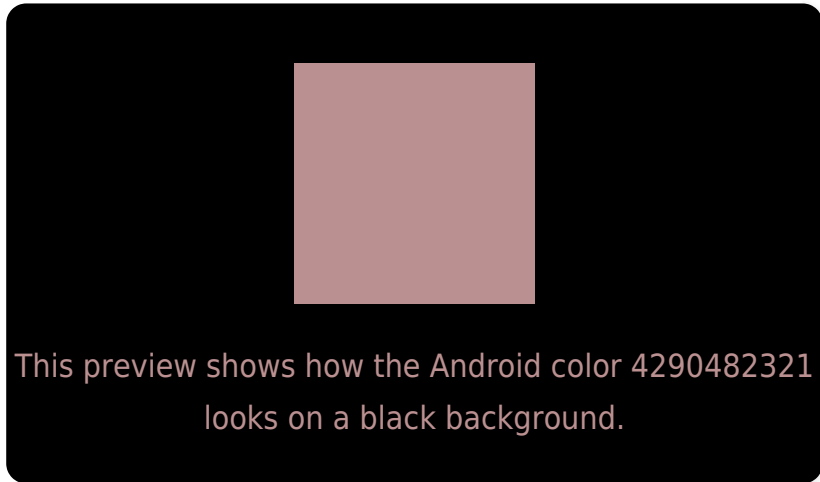
Large Text (above 18pt) WCAG AA × Fail

Any Text WCAG AA × Fail

Large Text (above 18pt) WCAG AAA × Fail

Any Text WCAG AAA × Fail

Black Background



Color Contrast Check

Large Text (above 18pt) WCAG AA ✓ Pass

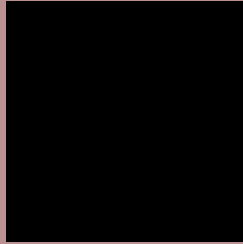
Any Text WCAG AA ✓ Pass

Large Text (above 18pt) WCAG AAA ✓ Pass

Any Text WCAG AAA ✓ Pass

If you want to check with other color combinations, try the [Color Contrast Checker](#).

Android 4290482321 Background



This preview shows how black text looks on a background with the Android color 4290482321.



This preview shows how white text looks on a background with the Android color 4290482321.

Color Blindness Simulation

Color vision deficiency is a very complex topic, and I could not describe the different causes any better than Wikipedia does, so if you want to learn more, you should check out their [article about color blindness](#).

Dichromacy



Original Color
4290482321

Protanopia
4288649879

Deuteranopia
4289631632



Tritanopia
4290547610

Trichromacy



Original Color
4290482321

Protanomaly
4289304213

Deuteranomaly
4289958800

Tritanomaly
4290547607

Monochromacy



Original Color
4290482321

Achromatopsia
4288519581

Achromatomaly
4289239193

CSS Examples

Text

The CSS property to change the color of the text to Android 4290482321 is called "color". The color property can be set on classes, ids or directly on the HTML element.

This example shows how text in the color `rgb(187, 144, 145)` looks like.

```
.text, #text, p{  
    color:rgb(187, 144, 145)  
}
```

If you want to add a text shadow in that color use the text-shadow property, you can generate a text shadow directly with our [CSS Text Shadow Generator](#).

Here you see how black text with a 4 pixel rgb(187, 144, 145) colored shadow looks like.

```
.shadow{ text-shadow: 4px 4px 2px rgb(187, 144, 145) }
```

Border

The CSS property to change the border of an element to Android 4290482321 is called "border". The border property can be set on classes, ids or directly on the HTML element.

This example shows the color as border, it can be applied via the CSS property "border" or "border-color".

```
.border, #border, table{ border:4px solid rgb(187, 144, 145) }
```

If only the border color should be changed use the property `border-color`.

```
.border{ border-color:rgb(187, 144, 145) }
```

If you want to add a box shadow in that color use:

Here you see how a box with a 4 pixel `rgb(187, 144, 145)` colored shadow looks like.

```
.boxshadow{ -moz-box-shadow:4px 4px 4px  
4px rgb(187, 144, 145); -webkit-box-  
shadow:4px 4px 4px 4px rgb(187, 144, 145);  
box-shadow:4px 4px 4px 4px rgb(187, 144,  
145) }
```

Background

The CSS property to change the background color of an element to Android 4290482321 is called "background". The background property can be set on classes, ids or directly on the HTML element.

```
.background, #background, body{  
background: rgb(187, 144, 145) }
```

If only the background color should be changed can be used:

```
.background{ background-color: rgb(187,  
144, 145) }
```

This example shows the color as background, it is applied via the CSS property "background".

To optimize and compress your CSS code, you can use our [online CSS compressor and optimizer](#) based on csstidy. If you want to create a linear or radial gradient as background or border, check our [CSS Gradient Generator](#).

Hey! You found this booklet interesting? Support Converting Colors with the new Membership Option!

The pro membership hides all ads, plus gives you double the colors in the color bucket, and more awesome pro features!

[Learn more, Memberships starting at \\$2.50/m!](#)

**Follow me
on Twitter!**

@ConvertingColor