

Converting Colors

Android(4290483045)

Have a look what the booklet for
Android(4290483045) contains.

Android(4290483045)	3
<i>Conversions</i>	4
<i>Details</i>	6
<i>Harmonies</i>	11
<i>Previews</i>	23
<i>Color Blindness Simulation</i>	26
<i>CSS Examples</i>	29

Color

Android(4290483045)

Conversions

Conversions Part 1

Format	Color
Hex	BB9365
RGB	187, 147, 101
RGB Percent	73%, 58%, 40%
CMY	0.2667, 0.4235, 0.6039
CMYK	0.00, 0.21, 0.46, 0.27
HSL	32°, 39%, 56%
HSV	32°, 46%, 73%
XYZ	33.2762, 32.3718, 16.8065
YIQ	153.7160, 38.6060, -5.8260

Conversions

Conversions Part 2

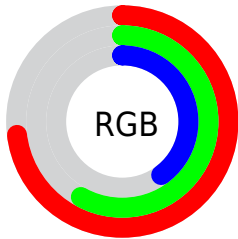
Format	Color
RYB	176, 187, 101
Decimal	12292965
CIELab	63.65, 9.08, 30.04
CIELCh	64, 31.385, 73.175
Yxy	32.3718, 0.4036, 0.3926
Android (android.graphics.Color)	4290483045 (0xFFBB9365)
YUV	153.7160, -25.9890, 29.1901
Hunter-Lab	56.8962, 4.8287, 22.3138

Details

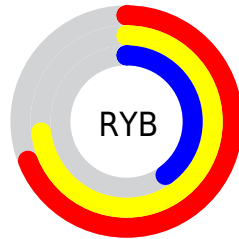
The Android color `4290483045` is a dark color, and the websafe version is hex `CC9966`. A complement of this color would be `4284845499`, and the grayscale version is `4288322202`.

A 20% lighter version of the original color is `4294298009`, and `4286865717` is the 20% darker color. If you saturate the color by 10%, you get `4290480722`, and if you desaturate by 10%, it is `4290485368`.

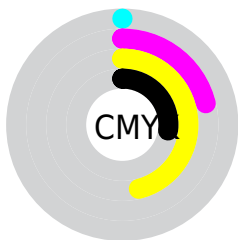
Distribution



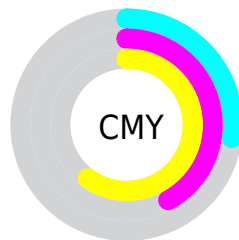
- Red (73%)
- Green (58%)
- Blue (40%)



- Red (69%)
- Yellow (73%)
- Blue (40%)



- Cyan (0%)
- Magenta (21%)
- Yellow (46%)
- Black (27%)



- Cyan (27%)
- Magenta (42%)
- Yellow (60%)

Brightness & Saturation Gradients

These gradients show how the Android color 4290483045 changes by changing the brightness by 10 percent. The first figure shows a shift by +10% for each color and the second figure -10%.

Similar to the brightness gradients but the following saturation gradients show a change of the Android color 4290483045 by changing the saturation by 10% instead.



4290483045



4290483045

4294967295



4288641357



4294298009



4286865717



4294960563



4285090079



4294967247



4283380231



4294967276



4281736448



4280223232



4278190080



4290483045



4290483045



4290480722



4290485368

4290478656

4290487434

4290476333

4290489757

4290474010

4290492080

4290471943

4290494147

4290470912

4290496469

4290498792

4290501115

4290503167

Harmonies

Analogous

The Analogous color harmony consists of three colors that are next to each other on the color wheel.



4291594869



4290483045



4288781411

Triad

The Triadic color harmony groups three colors that are evenly spaced from another and form a triangle on the color wheel.



4290483045



4282427814



4289564611

Complementary

The Complementary color scheme is a pair of colors which are on the opposite of each other on the color wheel.



4290483045



4284845499

Split Complementary

Split-complementary colors differ from the complementary color scheme. The scheme consists of three colors, the original color and two neighbors of the complement color.



4287076816



4290483045



4281968575

Square

The Square scheme is like the rectangle color scheme, but the four colors are evenly spaced on the color wheel.



4290483045



4284524681



4284195279



4291266475

Rectangle

The Rectangle color scheme consists of four colors that form a rectangle on the color wheel.



4290483045



4287406699



4284195279



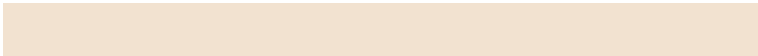
4288844489

Sweetspot

The Sweet Spot groups the original color and five complimentary colors.



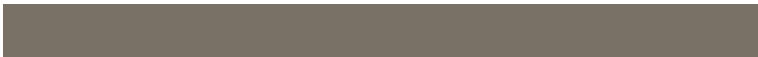
4290483045



4294107856



4290471309



4286214502



4294638330



4286216826

Same Dimension

The Same Dimension uses a secret algorithm to generate beautiful new colors.



4290483045



4294095981



4290296677



4284373589



4288566528



4280225792

Inverse Universe

The Inverse Universe completely reimagines the original color for something new.



4284845499



4285377522



4285031867



4283783518



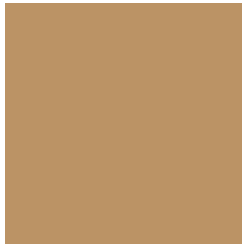
4278209182



4278193695

Previews

White Background



This preview shows how the Android color 4290483045 looks on a white background.

Color Contrast Check

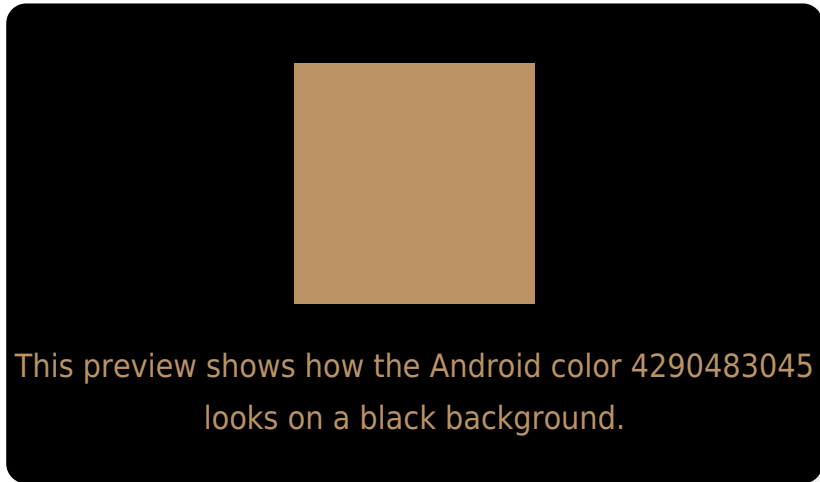
Large Text (above 18pt) WCAG AA × Fail

Any Text WCAG AA × Fail

Large Text (above 18pt) WCAG AAA × Fail

Any Text WCAG AAA × Fail

Black Background



Color Contrast Check

Large Text (above 18pt) WCAG AA ✓ Pass

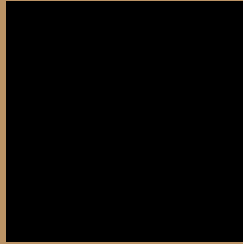
Any Text WCAG AA ✓ Pass

Large Text (above 18pt) WCAG AAA ✓ Pass

Any Text WCAG AAA ✓ Pass

If you want to check with other color combinations, try the [Color Contrast Checker](#).

Android 4290483045 Background



This preview shows how black text looks on a background with the Android color 4290483045.



This preview shows how white text looks on a background with the Android color 4290483045.

Color Blindness Simulation

Color vision deficiency is a very complex topic, and I could not describe the different causes any better than Wikipedia does, so if you want to learn more, you should check out their [article about color blindness](#).

Dichromacy



Original Color
4290483045

Protanopia
4289174120

Deuteranopia
4290417765

Trichromacy



Original Color
4290483045

Protanomaly
4289632103

Deuteranomaly
4290417765

Tritanomaly
4290678661

Monochromacy



Original Color
4290483045

Achromatopsia
4288322202

Achromatomaly
4289107847

CSS Examples

Text

The CSS property to change the color of the text to Android 4290483045 is called "color". The color property can be set on classes, ids or directly on the HTML element.

This example shows how text in the color `rgb(187, 147, 101)` looks like.

```
.text, #text, p{  
    color:rgb(187, 147, 101)  
}
```

If you want to add a text shadow in that color use the text-shadow property, you can generate a text shadow directly with our [CSS Text Shadow Generator](#).

Here you see how black text with a 4 pixel rgb(187, 147, 101) colored shadow looks like.

```
.shadow{ text-shadow: 4px 4px 2px rgb(187, 147, 101) }
```

Border

The CSS property to change the border of an element to Android 4290483045 is called "border". The border property can be set on classes, ids or directly on the HTML element.

This example shows the color as border, it can be applied via the CSS property "border" or "border-color".

```
.border, #border, table{ border:4px solid rgb(187, 147, 101) }
```

If only the border color should be changed use the property border-color.

```
.border{ border-color:rgb(187, 147, 101) }
```

If you want to add a box shadow in that color use:

Here you see how a box with a 4 pixel rgb(187, 147, 101) colored shadow looks like.

```
.boxshadow{ -moz-box-shadow:4px 4px 4px  
4px rgb(187, 147, 101); -webkit-box-  
shadow:4px 4px 4px 4px rgb(187, 147, 101);  
box-shadow:4px 4px 4px 4px rgb(187, 147,  
101) }
```

Background

The CSS property to change the background color of an element to Android 4290483045 is called "background". The background property can be set on classes, ids or directly on the HTML element.

```
.background, #background, body{  
background: rgb(187, 147, 101) }
```

If only the background color should be changed can be used:

```
.background{ background-color: rgb(187,  
147, 101) }
```

This example shows the color as background, it is applied via the CSS property "background".

To optimize and compress your CSS code, you can use our [online CSS compressor and optimizer](#) based on csstidy. If you want to create a linear or radial gradient as background or border, check our [CSS Gradient Generator](#).

Hey! You found this booklet interesting? Support Converting Colors with the new Membership Option!

The pro membership hides all ads, plus gives you double the colors in the color bucket, and more awesome pro features!

[Learn more, Memberships starting at \\$2.50/m!](#)

**Follow me
on Twitter!**

@ConvertingColor