

Converting Colors

Android(4290485395)

Have a look what the booklet for
Android(4290485395) contains.

Android(4290485395)	3
<i>Conversions</i>	4
<i>Details</i>	6
<i>Harmonies</i>	11
<i>Previews</i>	23
<i>Color Blindness Simulation</i>	26
<i>CSS Examples</i>	29

Color

Android(4290485395)

Conversions

Conversions Part 1

Format	Color
Hex	BB9C93
RGB	187, 156, 147
RGB Percent	73%, 61%, 58%
CMY	0.2667, 0.3882, 0.4235
CMYK	0.00, 0.17, 0.21, 0.27
HSL	14°, 23%, 65%
HSV	14°, 21%, 73%
XYZ	37.6484, 36.4483, 32.6547
YIQ	164.2430, 21.3650, 3.7730

Conversions

Conversions Part 2

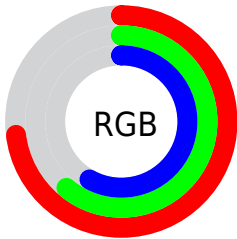
Format	Color
RYB	187, 159, 147
Decimal	12295315
CIELab	66.86, 10.04, 8.99
CIElCh	67, 13.480, 41.837
Yxy	36.4483, 0.3527, 0.3414
Android (android.graphics.Color)	4290485395 (0xFFBB9C93)
YUV	164.2430, -8.5008, 19.9579
Hunter-Lab	60.3724, 5.6614, 10.1915

Details

The Android color `4290485395` is a light color, and the websafe version is hex `CC9999`. A complement of this color would be `4287869627`, and the grayscale version is `4288980132`.

A 20% lighter version of the original color is `4294235081`, and `4286933344` is the 20% darker color. If you saturate the color by 10%, you get `4290481792`, and if you desaturate by 10%, it is `4290488998`.

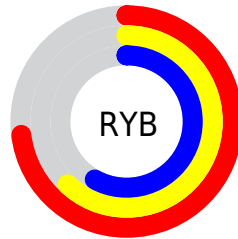
Distribution



Red (73%)

Green (61%)

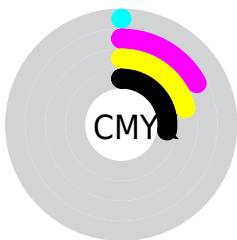
Blue (58%)



Red (73%)

Yellow (62%)

Blue (58%)

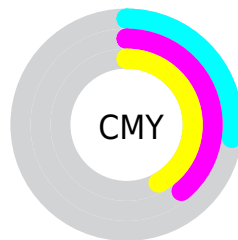


Cyan (0%)

Magenta (17%)

Yellow (21%)

Black (27%)



Cyan (27%)

Magenta (39%)

Yellow (42%)

Brightness & Saturation Gradients

These gradients show how the Android color 4290485395 changes by changing the brightness by 10 percent. The first figure shows a shift by +10% for each color and the second figure -10%.

Similar to the brightness gradients but the following saturation gradients show a change of the Android color 4290485395 by changing the saturation by 10% instead.



4290485395



4290485395

4294967295



4288709241



4294235081



4286933344



4294963173



4285288777



4283644466



4282065949



4280618756



4278190080



4290485395



4290485395



4290481792



4290488998

 4290477934

 4290492856

 4290474331

 4290496459

 4290470472

 4290500318

 4290466870

 4290503921

 4290463011

 4290507775

 4290459408

 4290510847

 4290456064

Harmonies

Analogous

The Analogous color harmony consists of three colors that are next to each other on the color wheel.



4290550430



4290485395



4289961868

Triad

The Triadic color harmony groups three colors that are evenly spaced from another and form a triangle on the color wheel.



4290485395



4287474075



4288455354

Complementary

The Complementary color scheme is a pair of colors which are on the opposite of each other on the color wheel.



4290485395



4287869627

Split Complementary

Split-complementary colors differ from the complementary color scheme. The scheme consists of three colors, the original color and two neighbors of the complement color.



4287473337



4290485395



4286950055

Square

The Square scheme is like the rectangle color scheme, but the four colors are evenly spaced on the color wheel.



4290485395



4288259984



4286949810



4289437365

Rectangle

The Rectangle color scheme consists of four colors that form a rectangle on the color wheel.



4290485395



4289503883



4286949810



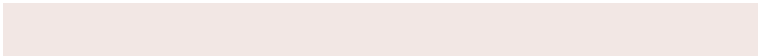
4288062395

Sweetspot

The Sweet Spot groups the original color and five complimentary colors.



4290485395



4294109156



4290483122



4286215282



4294638330



4286216826

Same Dimension

The Same Dimension uses a secret algorithm to generate beautiful new colors.



4290485395



4294099379



4290490515



4284372821



4288553984



4280223488

Inverse Universe

The Inverse Universe completely reimagines the original color for something new.



4287869627



4289979634



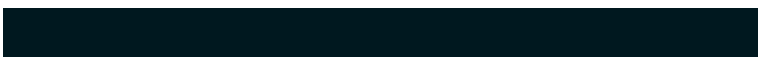
4287864507



4283784286



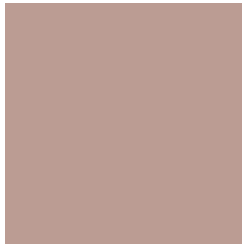
4278221726



4278196255

Previews

White Background



This preview shows how the Android color 4290485395 looks on a white background.

Color Contrast Check

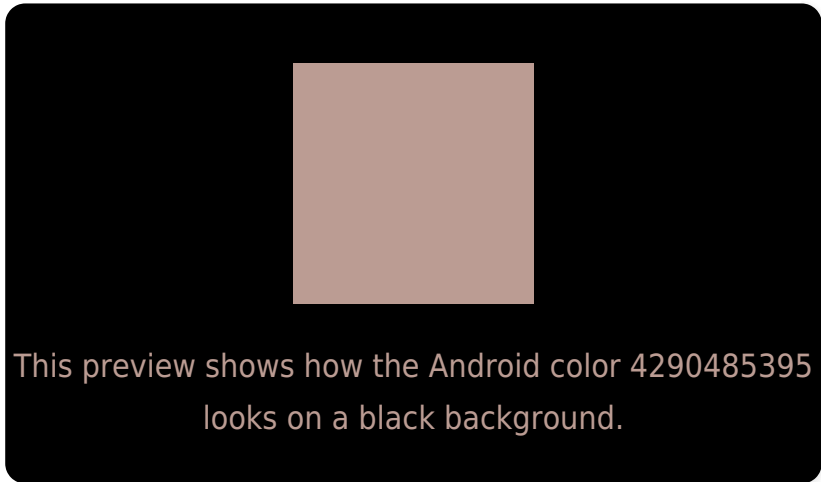
Large Text (above 18pt) WCAG AA × Fail

Any Text WCAG AA × Fail

Large Text (above 18pt) WCAG AAA × Fail

Any Text WCAG AAA × Fail

Black Background



Color Contrast Check

Large Text (above 18pt) WCAG AA ✓ Pass

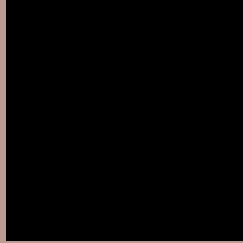
Any Text WCAG AA ✓ Pass

Large Text (above 18pt) WCAG AAA ✓ Pass

Any Text WCAG AAA ✓ Pass

If you want to check with other color combinations, try the [Color Contrast Checker](#).

Android 4290485395 Background



This preview shows how black text looks on a background with the Android color 4290485395.



This preview shows how white text looks on a background with the Android color 4290485395.

Color Blindness Simulation

Color vision deficiency is a very complex topic, and I could not describe the different causes any better than Wikipedia does, so if you want to learn more, you should check out their [article about color blindness](#).

Dichromacy



Original Color


4290485395

Protanopia

4289307286

Deuteranopia

4290289043



Tritanopia
4290615717

Trichromacy



Original Color
4290485395

Protanomaly
4289765525

Deuteranomaly
4290354579

Tritanomaly
4290550430

Monochromacy



Original Color
4290485395

Achromatopsia
4288980132

Achromatomaly
4289503646

CSS Examples

Text

The CSS property to change the color of the text to Android 4290485395 is called "color". The color property can be set on classes, ids or directly on the HTML element.

This example shows how text in the color `rgb(187, 156, 147)` looks like.

```
.text, #text, p{  
    color:rgb(187, 156, 147)  
}
```

If you want to add a text shadow in that color use the text-shadow property, you can generate a text shadow directly with our [CSS Text Shadow Generator](#).

Here you see how black text with a 4 pixel rgb(187, 156, 147) colored shadow looks like.

```
.shadow{ text-shadow: 4px 4px 2px rgb(187, 156, 147) }
```

Border

The CSS property to change the border of an element to Android 4290485395 is called "border". The border property can be set on classes, ids or directly on the HTML element.

This example shows the color as border, it can be applied via the CSS property "border" or "border-color".

```
.border, #border, table{ border:4px solid rgb(187, 156, 147) }
```

If only the border color should be changed use the property `border-color`.

```
.border{ border-color:rgb(187, 156, 147) }
```

If you want to add a box shadow in that color use:

Here you see how a box with a 4 pixel `rgb(187, 156, 147)` colored shadow looks like.

```
.boxshadow{ -moz-box-shadow:4px 4px 4px  
4px rgb(187, 156, 147); -webkit-box-  
shadow:4px 4px 4px 4px rgb(187, 156, 147);  
box-shadow:4px 4px 4px 4px rgb(187, 156,  
147) }
```

Background

The CSS property to change the background color of an element to Android 4290485395 is called "background". The background property can be set on classes, ids or directly on the HTML element.

```
.background, #background, body{  
background: rgb(187, 156, 147) }
```

If only the background color should be changed can be used:

```
.background{ background-color: rgb(187,  
156, 147) }
```

This example shows the color as background, it is applied via the CSS property "background".

To optimize and compress your CSS code, you can use our [online CSS compressor and optimizer](#) based on csstidy. If you want to create a linear or radial gradient as background or border, check our [CSS Gradient Generator](#).

Hey! You found this booklet interesting? Support Converting Colors with the new Membership Option!

The pro membership hides all ads, plus gives you double the colors in the color bucket, and more awesome pro features!

[Learn more, Memberships starting at \\$2.50/m!](#)

**Follow me
on Twitter!**

@ConvertingColor