

Converting Colors

Android(4290486405)

Have a look what the booklet for
Android(4290486405) contains.

Android(4290486405)	3
<i>Conversions</i>	4
<i>Details</i>	6
<i>Harmonies</i>	11
<i>Previews</i>	23
<i>Color Blindness Simulation</i>	26
<i>CSS Examples</i>	29

Color

Android(4290486405)

Conversions

Conversions Part 1

Format	Color
Hex	BBA085
RGB	187, 160, 133
RGB Percent	73%, 63%, 52%
CMY	0.2667, 0.3725, 0.4784
CMYK	0.00, 0.14, 0.29, 0.27
HSL	30°, 28%, 63%
HSV	30°, 29%, 73%
XYZ	37.2980, 37.3999, 27.4434
YIQ	164.9950, 24.7590, -2.6730

Conversions

Conversions Part 2

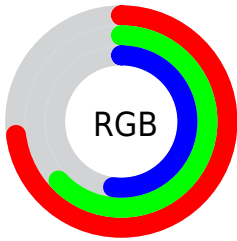
Format	Color
RYB	187, 187, 133
Decimal	12296325
CIELab	67.58, 5.82, 17.76
CIElCh	68, 18.691, 71.861
Yxy	37.3999, 0.3652, 0.3662
Android (android.graphics.Color)	4290486405 (0xFFBBA085)
YUV	164.9950, -15.7735, 19.2984
Hunter-Lab	61.1554, 1.8430, 16.2025

Details

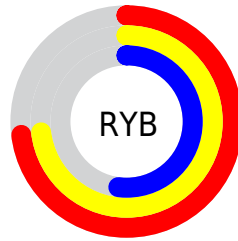
The Android color `4290486405` is a light color, and the websafe version is hex `CC9999`. A complement of this color would be `4286947515`, and the grayscale version is `4289045925`.

A 20% lighter version of the original color is `4294236090`, and `4286934355` is the 20% darker color. If you saturate the color by 10%, you get `4290484082`, and if you desaturate by 10%, it is `4290488728`.

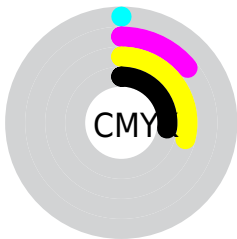
Distribution



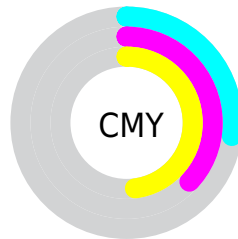
- Red (73%)
- Green (63%)
- Blue (52%)



- Red (73%)
- Yellow (73%)
- Blue (52%)



- Cyan (0%)
- Magenta (14%)
- Yellow (29%)
- Black (27%)



- Cyan (27%)
- Magenta (37%)
- Yellow (48%)

Brightness & Saturation Gradients

These gradients show how the Android color 4290486405 changes by changing the brightness by 10 percent. The first figure shows a shift by +10% for each color and the second figure -10%.

Similar to the brightness gradients but the following saturation gradients show a change of the Android color 4290486405 by changing the saturation by 10% instead.



4290486405



4290486405

4294967295



4288710252



4294236090



4286934355



4294964182



4285223996



4294967282



4283579686



4282001169



4280554240



4278190080



4290486405



4290486405



4290484082



4290488728

 4290481504

 4290491306

 4290479181

 4290493629

 4290476858

 4290495952

 4290474280

 4290498531

 4290471957

 4290500853

 4290469634

 4290503167

 4290469376

 4290505727

 4290508031

Harmonies

Analogous

The Analogous color harmony consists of three colors that are next to each other on the color wheel.



4291140495



4290486405



4289439364

Triad

The Triadic color harmony groups three colors that are evenly spaced from another and form a triangle on the color wheel.



4290486405



4286164651



4289765054

Complementary

The Complementary color scheme is a pair of colors which are on the opposite of each other on the color wheel.



4290486405



4286947515

Split Complementary

Split-complementary colors differ from the complementary color scheme. The scheme consists of three colors, the original color and two neighbors of the complement color.



4288324805



4290486405



4286098874

Square

The Square scheme is like the rectangle color scheme, but the four colors are evenly spaced on the color wheel.



4290486405



4286950810



4286949828



4290812591

Rectangle

The Rectangle color scheme consists of four colors that form a rectangle on the color wheel.



4290486405



4288588168



4286949828



4289306817

Sweetspot

The Sweet Spot groups the original color and five complimentary colors.



4290486405



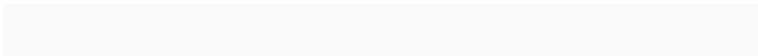
4294109148



4290479520



4286215277



4294638330



4286216826

Same Dimension

The Same Dimension uses a secret algorithm to generate beautiful new colors.



4290486405



4294101149



4290493317



4284373589



4288564992



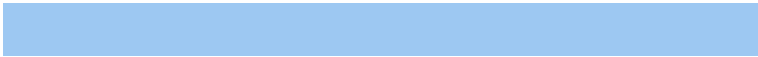
4280225536

Inverse Universe

The Inverse Universe completely reimagines the original color for something new.



4286947515



4288530674



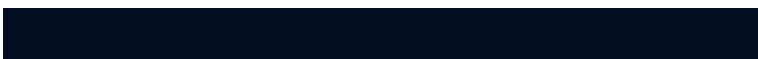
4286940603



4283783774



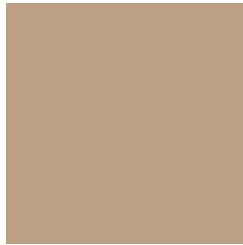
4278210462



4278193951

Previews

White Background



This preview shows how the Android color 4290486405 looks on a white background.

Color Contrast Check

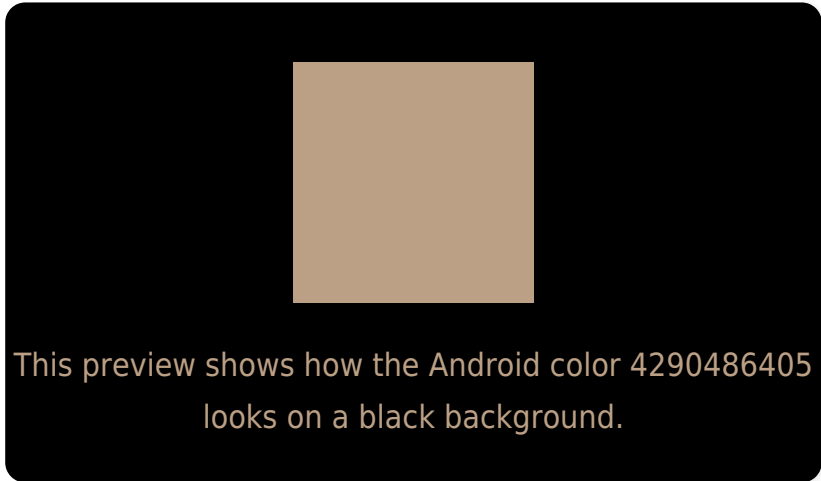
Large Text (above 18pt) WCAG AA × Fail

Any Text WCAG AA × Fail

Large Text (above 18pt) WCAG AAA × Fail

Any Text WCAG AAA × Fail

Black Background



Color Contrast Check

Large Text (above 18pt) WCAG AA ✓ Pass

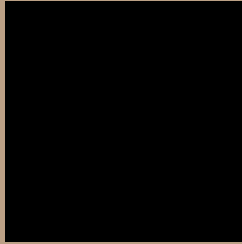
Any Text WCAG AA ✓ Pass

Large Text (above 18pt) WCAG AAA ✓ Pass

Any Text WCAG AAA ✓ Pass

If you want to check with other color combinations, try the [Color Contrast Checker](#).

Android 4290486405 Background



This preview shows how black text looks on a background with the Android color 4290486405.



This preview shows how white text looks on a background with the Android color 4290486405.

Color Blindness Simulation

Color vision deficiency is a very complex topic, and I could not describe the different causes any better than Wikipedia does, so if you want to learn more, you should check out their [article about color blindness](#).

Dichromacy



Original Color
4290486405

Protanopia
4289635463

Deuteranopia
4290748037



Tritanopia
4290747303

Trichromacy



Original Color

4290486405

Protanomaly

4289962886

Deuteranomaly

4290682757

Tritanomaly

4290682267

Monochromacy



Original Color

4290486405

Achromatopsia

4289045925

Achromatomaly

4289569689

CSS Examples

Text

The CSS property to change the color of the text to Android 4290486405 is called "color". The color property can be set on classes, ids or directly on the HTML element.

This example shows how text in the color `rgb(187, 160, 133)` looks like.

```
.text, #text, p{  
    color:rgb(187, 160, 133)  
}
```

If you want to add a text shadow in that color use the text-shadow property, you can generate a text shadow directly with our [CSS Text Shadow Generator](#).

Here you see how black text with a 4 pixel rgb(187, 160, 133) colored shadow looks like.

```
.shadow{ text-shadow: 4px 4px 2px rgb(187, 160, 133) }
```

Border

The CSS property to change the border of an element to Android 4290486405 is called "border". The border property can be set on classes, ids or directly on the HTML element.

This example shows the color as border, it can be applied via the CSS property "border" or "border-color".

```
.border, #border, table{ border:4px solid rgb(187, 160, 133) }
```

If only the border color should be changed use the property `border-color`.

```
.border{ border-color:rgb(187, 160, 133) }
```

If you want to add a box shadow in that color use:

Here you see how a box with a 4 pixel `rgb(187, 160, 133)` colored shadow looks like.

```
.boxshadow{ -moz-box-shadow:4px 4px 4px  
4px rgb(187, 160, 133); -webkit-box-  
shadow:4px 4px 4px 4px rgb(187, 160, 133);  
box-shadow:4px 4px 4px 4px rgb(187, 160,  
133) }
```

Background

The CSS property to change the background color of an element to Android 4290486405 is called "background". The background property can be set on classes, ids or directly on the HTML element.

```
.background, #background, body{  
background: rgb(187, 160, 133) }
```

If only the background color should be changed can be used:

```
.background{ background-color: rgb(187,  
160, 133) }
```

This example shows the color as background, it is applied via the CSS property "background".

To optimize and compress your CSS code, you can use our [online CSS compressor and optimizer](#) based on csstidy. If you want to create a linear or radial gradient as background or border, check our [CSS Gradient Generator](#).

Hey! You found this booklet interesting? Support Converting Colors with the new Membership Option!

The pro membership hides all ads, plus gives you double the colors in the color bucket, and more awesome pro features!

[Learn more, Memberships starting at \\$2.50/m!](#)

**Follow me
on Twitter!**

@ConvertingColor