

Converting Colors

Android(4290489754)

Have a look what the booklet for
Android(4290489754) contains.

Android(4290489754)	3
<i>Conversions</i>	4
<i>Details</i>	6
<i>Harmonies</i>	11
<i>Previews</i>	23
<i>Color Blindness Simulation</i>	26
<i>CSS Examples</i>	29

Color

Android(4290489754)

Conversions

Conversions Part 1

Format	Color
Hex	BBAD9A
RGB	187, 173, 154
RGB Percent	73%, 68%, 60%
CMY	0.2667, 0.3216, 0.3961
CMYK	0.00, 0.07, 0.18, 0.27
HSL	35°, 20%, 67%
HSV	35°, 18%, 73%
XYZ	41.2698, 42.7850, 36.6550
YIQ	175.0200, 14.4430, -2.9410

Conversions

Conversions Part 2

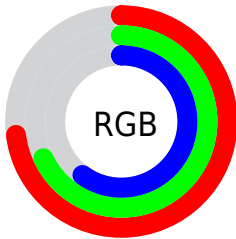
Format	Color
R_{YB}	178, 187, 154
Decimal	12299674
CIE _{Lab}	71.41, 1.86, 11.57
CIE _{LCh}	71, 11.723, 80.890
Yxy	42.7850, 0.3419, 0.3544
Android (android.graphics.Color)	4290489754 (0xFFBBAD9A)
YUV	175.0200, -10.3629, 10.5065
Hunter-Lab	65.4103, -1.8455, 12.5619

Details

The Android color `4290489754` is a light color, and the websafe version is hex `999999`. A complement of this color would be `4288325819`, and the grayscale version is `4289703855`.

A 20% lighter version of the original color is `4294173904`, and `4287002983` is the 20% darker color. If you saturate the color by 10%, you get `4290487687`, and if you desaturate by 10%, it is `4290491821`.

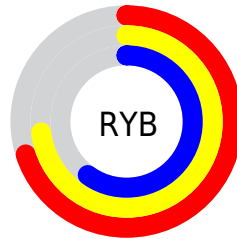
Distribution



Red (73%)

Green (68%)

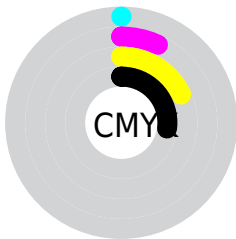
Blue (60%)



Red (70%)

Yellow (73%)

Blue (60%)

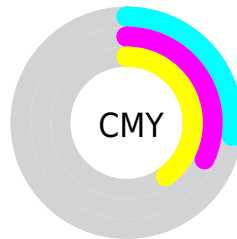


Cyan (0%)

Magenta (7%)

Yellow (18%)

Black (27%)



Cyan (27%)

Magenta (32%)

Yellow (40%)

Brightness & Saturation Gradients

These gradients show how the Android color 4290489754 changes by changing the brightness by 10 percent. The first figure shows a shift by +10% for each color and the second figure -10%.

Similar to the brightness gradients but the following saturation gradients show a change of the Android color 4290489754 by changing the saturation by 10% instead.

 4290489754

 4290489754

4294967295

 4288713344

 4294173904

 4287002983

 4294967277

 4285292623

 4283713592

 4282135074

 4280687885

 4279042816

 4278190080

 4290489754

 4290489754

4290487687

4290491821

4290485621

4290493887

4290483554

4290495954

4290481487

4290498021

4290479421

4290500088

4290477354

4290502143

4290475287

4290504191

4290473476

4290505983

4290472960

4290508031

Harmonies

Analogous

The Analogous color harmony consists of three colors that are next to each other on the color wheel.



4291013279



4290489754



4289769883

Triad

The Triadic color harmony groups three colors that are evenly spaced from another and form a triangle on the color wheel.



4290489754



4287935926



4290423484

Complementary

The Complementary color scheme is a pair of colors which are on the opposite of each other on the color wheel.



4290489754



4288325819

Split Complementary

Split-complementary colors differ from the complementary color scheme. The scheme consists of three colors, the original color and two neighbors of the complement color.



4289572291



4290489754



4288066751

Square

The Square scheme is like the rectangle color scheme, but the four colors are evenly spaced on the color wheel.



4290489754



4288263595



4288721348



4291012787

Rectangle

The Rectangle color scheme consists of four colors that form a rectangle on the color wheel.



4290489754



4289180575



4288721348



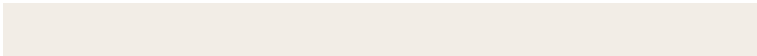
4290161599

Sweetspot

The Sweet Spot groups the original color and five complimentary colors.



4290489754



4294110694



4290484904



4286216051



4294638330



4286216826

Same Dimension

The Same Dimension uses a secret algorithm to generate beautiful new colors.



4290489754



4294106559



4290362266



4284373589



4288568064



4280226304

Inverse Universe

The Inverse Universe completely reimagines the original color for something new.



4288325819



4290762226



4288453307



4283783518



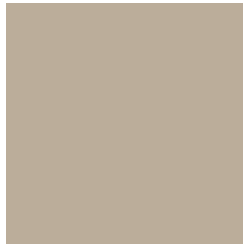
4278207390



4278193439

Previews

White Background



This preview shows how the Android color 4290489754 looks on a white background.

Color Contrast Check

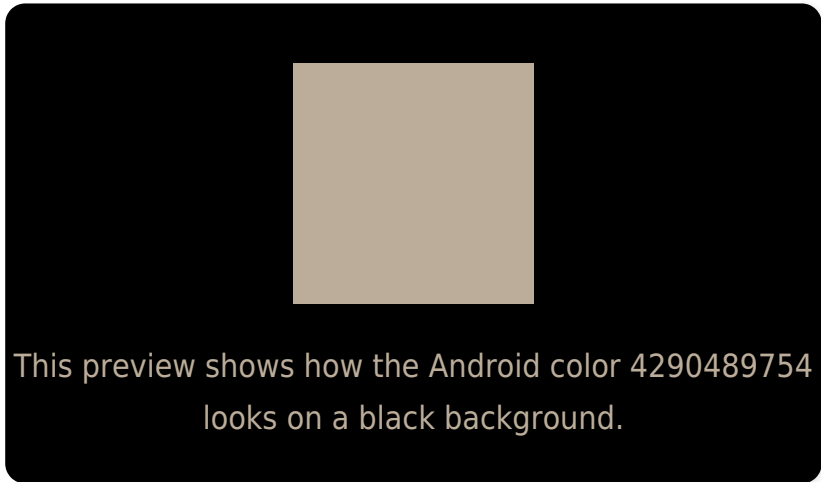
Large Text (above 18pt) WCAG AA × Fail

Any Text WCAG AA × Fail

Large Text (above 18pt) WCAG AAA × Fail

Any Text WCAG AAA × Fail

Black Background



Color Contrast Check

Large Text (above 18pt) WCAG AA ✓ Pass

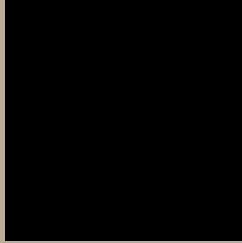
Any Text WCAG AA ✓ Pass

Large Text (above 18pt) WCAG AAA ✓ Pass

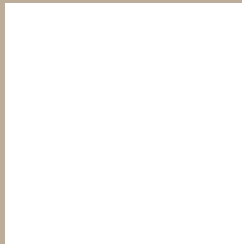
Any Text WCAG AAA ✓ Pass

If you want to check with other color combinations, try the [Color Contrast Checker](#).

Android 4290489754 Background



This preview shows how black text looks on a background with the Android color 4290489754.



This preview shows how white text looks on a background with the Android color 4290489754.

Color Blindness Simulation

Color vision deficiency is a very complex topic, and I could not describe the different causes any better than Wikipedia does, so if you want to learn more, you should check out their [article about color blindness](#).

Dichromacy



Original Color
4290489754

Protanopia
4290227867

Deuteranopia
4291275163



Tritanopia
4290750902

Trichromacy



Original Color
4290489754

Protanomaly
4290293403

Deuteranomaly
4291013275

Tritanomaly
4290685612

Monochromacy



Original Color
4290489754

Achromatopsia
4289703855

Achromatomaly
4289965735

CSS Examples

Text

The CSS property to change the color of the text to Android 4290489754 is called "color". The color property can be set on classes, ids or directly on the HTML element.

This example shows how text in the color `rgb(187, 173, 154)` looks like.

```
.text, #text, p{  
    color:rgb(187, 173, 154)  
}
```

If you want to add a text shadow in that color use the text-shadow property, you can generate a text shadow directly with our [CSS Text Shadow Generator](#).

Here you see how black text with a 4 pixel rgb(187, 173, 154) colored shadow looks like.

```
.shadow{ text-shadow: 4px 4px 2px rgb(187, 173, 154) }
```

Border

The CSS property to change the border of an element to Android 4290489754 is called "border". The border property can be set on classes, ids or directly on the HTML element.

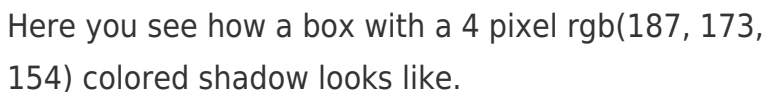
This example shows the color as border, it can be applied via the CSS property "border" or "border-color".

```
.border, #border, table{ border:4px solid rgb(187, 173, 154) }
```

If only the border color should be changed use the property `border-color`.

```
.border{ border-color:rgb(187, 173, 154) }
```

If you want to add a box shadow in that color use:



Here you see how a box with a 4 pixel `rgb(187, 173, 154)` colored shadow looks like.

```
.boxshadow{ -moz-box-shadow:4px 4px 4px 4px rgb(187, 173, 154); -webkit-box-shadow:4px 4px 4px 4px rgb(187, 173, 154); box-shadow:4px 4px 4px 4px rgb(187, 173, 154) }
```

Background

The CSS property to change the background color of an element to Android 4290489754 is called "background". The background property can be set on classes, ids or directly on the HTML element.

```
.background, #background, body{  
background: rgb(187, 173, 154) }
```

If only the background color should be changed can be used:

```
.background{ background-color: rgb(187,  
173, 154) }
```

This example shows the color as background, it is applied via the CSS property "background".

To optimize and compress your CSS code, you can use our [online CSS compressor and optimizer](#) based on csstidy. If you want to create a linear or radial gradient as background or border, check our [CSS Gradient Generator](#).

Hey! You found this booklet interesting? Support Converting Colors with the new Membership Option!

The pro membership hides all ads, plus gives you double the colors in the color bucket, and more awesome pro features!

[Learn more, Memberships starting at \\$2.50/m!](#)

**Follow me
on Twitter!**

@ConvertingColor