

# Converting Colors

Android(4290542723)

Have a look what the booklet for  
Android(4290542723) contains.

<b>Android(4290542723)</b> .....	3
<b><i>Conversions</i></b> .....	4
<b><i>Details</i></b> .....	6
<b><i>Harmonies</i></b> .....	11
<b><i>Previews</i></b> .....	23
<b><i>Color Blindness Simulation</i></b> .....	26
<b><i>CSS Examples</i></b> .....	29

**Color**

**Android(4290542723)**

# Conversions

## Conversions Part 1

Format	Color
Hex	BC7C83
RGB	188, 124, 131
RGB Percent	74%, 49%, 51%
CMY	0.2627, 0.5137, 0.4863
CMYK	0.00, 0.34, 0.30, 0.26
HSL	353°, 32%, 61%
HSV	353°, 34%, 74%
XYZ	32.0434, 26.7454, 24.9462
YIQ	143.9340, 35.8970, 15.7450

# Conversions

## Conversions Part 2

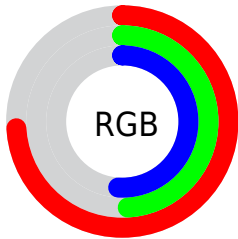
<b>Format</b>	<b>Color</b>
<b>R<sub>YB</sub></b>	188, 124, 131
Decimal	12352643
CIE <sub>Lab</sub>	58.74, 25.85, 6.48
CIE <sub>LCh</sub>	59, 26.646, 14.071
Yxy	26.7454, 0.3827, 0.3194
Android (android.graphics.Color)	4290542723 (0xFFBC7C83)
YUV	143.9340, -6.3765, 38.6459
Hunter-Lab	51.7159, 20.0966, 7.6014

# Details

The Android color `4290542723` is a dark color, and the websafe version is hex `CC9999`. A complement of this color would be `4286364853`, and the grayscale version is `4287664272`.

A 20% lighter version of the original color is `4294357432`, and `4286925394` is the 20% darker color. If you saturate the color by 10%, you get `4290537842`, and if you desaturate by 10%, it is `4290547604`.

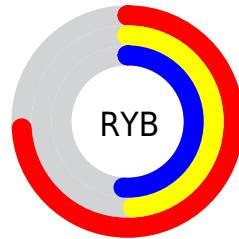
# Distribution



Red (74%)

Green (49%)

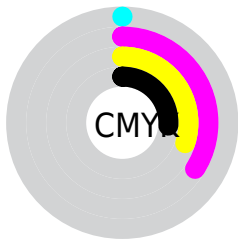
Blue (51%)



Red (74%)

Yellow (49%)

Blue (51%)

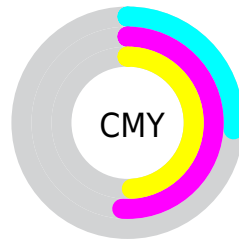


Cyan (0%)

Magenta (34%)

Yellow (30%)

Black (26%)



Cyan (26%)

Magenta (51%)

Yellow (49%)

# Brightness & Saturation Gradients

These gradients show how the Android color 4290542723 changes by changing the brightness by 10 percent. The first figure shows a shift by +10% for each color and the second figure -10%.

Similar to the brightness gradients but the following saturation gradients show a change of the Android color 4290542723 by changing the saturation by 10% instead.



 4290542723

 4290542723

4294967295

 4288701290

 4294357432

 4286925394

 4294954452

 4285150011

 4294961648

 4283505701

 4281861136

 4280418305

 4278190080

 4290542723

 4290542723

 4290537842

 4290547604

 4290532962

 4290552484

 4290528337

 4290557109

 4290523456

 4290561990

 4290518575

 4290566871

 4290513695

 4290571751

 4290510869

 4290576376

 4290576383

# Harmonies

## Analogous

The Analogous color harmony consists of three colors that are next to each other on the color wheel.



4290018715



4290542723



4290281582

# Triad

The Triadic color harmony groups three colors that are evenly spaced from another and form a triangle on the color wheel.



4290542723



4286092907



4284257210

# Complementary

The Complementary color scheme is a pair of colors which are on the opposite of each other on the color wheel.



4290542723



4286364853

# Split Complementary

Split-complementary colors differ from the complementary color scheme. The scheme consists of three colors, the original color and two neighbors of the complement color.



4282685613



4290542723



4284324224

# Square

The Square scheme is like the rectangle color scheme, but the four colors are evenly spaced on the color wheel.



4290542723



4287860576



4282817176



4286549178

# Rectangle

The Rectangle color scheme consists of four colors that form a rectangle on the color wheel.



4290542723



4289693028



4282817176



4283602359



# Sweetspot

The Sweet Spot groups the original color and five complimentary colors.



4290542723



4294302943



4290084028



4286213229



4294638330



4286216826



# Same Dimension

The Same Dimension uses a secret algorithm to generate beautiful new colors.



4290542723



4294283419



4290549116



4284372310



4288544785



4280221699



# Inverse Universe

The Inverse Universe completely reimagines the original color for something new.



4290542723



4294283419



4286358460



4284372310



4288544785

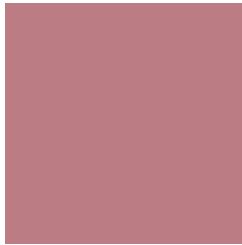


4280221699



# Previews

## White Background



This preview shows how the Android color 4290542723 looks on a white background.

## Color Contrast Check

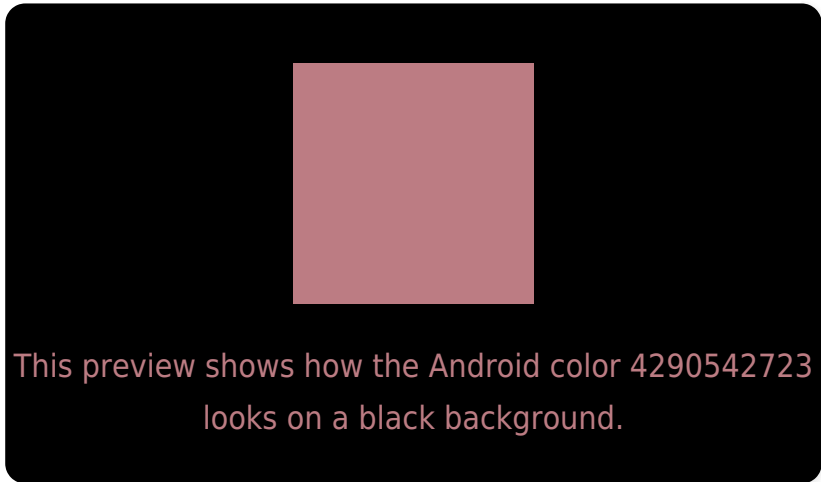
Large Text (above 18pt) WCAG AA ✓ Pass

Any Text WCAG AA ✗ Fail

Large Text (above 18pt) WCAG AAA ✗ Fail

Any Text WCAG AAA ✗ Fail

# Black Background



## Color Contrast Check

Large Text (above 18pt) WCAG AA ✓ Pass

Any Text WCAG AA ✓ Pass

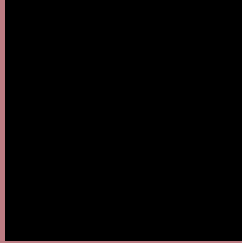
Large Text (above 18pt) WCAG AAA ✓ Pass

Any Text WCAG AAA × Fail

If you want to check with other color combinations, try the [Color Contrast Checker](#).



# Android 4290542723 Background



This preview shows how black text looks on a background with the Android color 4290542723.



This preview shows how white text looks on a background with the Android color 4290542723.

# Color Blindness Simulation

Color vision deficiency is a very complex topic, and I could not describe the different causes any better than Wikipedia does, so if you want to learn more, you should check out their [article about color blindness](#).

## Dichromacy



**Original Color**

4290542723

**Protanopia**

4287663500

**Deuteranopia**

4288711041



# Trichromacy



**Original Color**  
4290542723

**Protanomaly**  
4288710537

**Deuteranomaly**  
4289365122

**Tritanomaly**  
4290542724

# Monochromacy



**Original Color**  
4290542723

**Achromatopsia**  
4287664272

**Achromatomaly**  
4288711051

# CSS Examples

## Text

The CSS property to change the color of the text to Android 4290542723 is called "color". The color property can be set on classes, ids or directly on the HTML element.

This example shows how text in the color `rgb(188, 124, 131)` looks like.

```
.text, #text, p{  
    color:rgb(188, 124, 131)  
}
```

If you want to add a text shadow in that color use the text-shadow property, you can generate a text shadow directly with our [CSS Text Shadow Generator](#).

Here you see how black text with a 4 pixel rgb(188, 124, 131) colored shadow looks like.

```
.shadow{ text-shadow: 4px 4px 2px rgb(188, 124, 131) }
```

## Border

The CSS property to change the border of an element to Android 4290542723 is called "border". The border property can be set on classes, ids or directly on the HTML element.

This example shows the color as border, it can be applied via the CSS property "border" or "border-color".

```
.border, #border, table{ border:4px solid rgb(188, 124, 131) }
```

If only the border color should be changed use the property `border-color`.

```
.border{ border-color:rgb(188, 124, 131) }
```

If you want to add a box shadow in that color use:

Here you see how a box with a 4 pixel `rgb(188, 124, 131)` colored shadow looks like.

```
.boxshadow{ -moz-box-shadow:4px 4px 4px  
4px rgb(188, 124, 131); -webkit-box-  
shadow:4px 4px 4px 4px rgb(188, 124, 131);  
box-shadow:4px 4px 4px 4px rgb(188, 124,  
131) }
```

# Background

The CSS property to change the background color of an element to Android 4290542723 is called "background". The background property can be set on classes, ids or directly on the HTML element.

```
.background, #background, body{  
background: rgb(188, 124, 131) }
```

If only the background color should be changed can be used:

```
.background{ background-color: rgb(188,  
124, 131) }
```

This example shows the color as background, it is applied via the CSS property "background".

To optimize and compress your CSS code, you can use our [online CSS compressor and optimizer](#) based on csstidy. If you want to create a linear or radial gradient as background or border, check our [CSS Gradient Generator](#).



Hey! You found this booklet interesting? Support Converting Colors with the new Membership Option!

The pro membership hides all ads, plus gives you double the colors in the color bucket, and more awesome pro features!

**[Learn more, Memberships starting at \\$2.50/m!](#)**

**Follow me  
on Twitter!**

@ConvertingColor