

Converting Colors

Android(4290546306)

Have a look what the booklet for
Android(4290546306) contains.

Android(4290546306)	3
<i>Conversions</i>	4
<i>Details</i>	6
<i>Harmonies</i>	11
<i>Previews</i>	23
<i>Color Blindness Simulation</i>	26
<i>CSS Examples</i>	29

Color

Android(4290546306)

Conversions

Conversions Part 1

Format	Color
Hex	BC8A82
RGB	188, 138, 130
RGB Percent	74%, 54%, 51%
CMY	0.2627, 0.4588, 0.4902
CMYK	0.00, 0.27, 0.31, 0.26
HSL	8°, 30%, 62%
HSV	8°, 31%, 74%
XYZ	33.8568, 30.4800, 25.2179
YIQ	152.0380, 32.3680, 8.1120

Conversions

Conversions Part 2

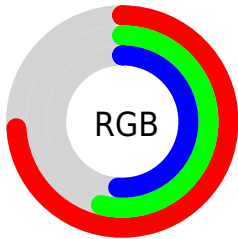
Format	Color
RYB	188, 139, 130
Decimal	12356226
CIELab	62.07, 17.94, 11.77
CIElCh	62, 21.463, 33.270
Yxy	30.4800, 0.3781, 0.3404
Android (android.graphics.Color)	4290546306 (0xFFBC8A82)
YUV	152.0380, -10.8647, 31.5387
Hunter-Lab	55.2087, 12.8500, 11.5640

Details

The Android color `4290546306` is a light color, and the websafe version is hex `CC9999`. A complement of this color would be `4286756028`, and the grayscale version is `4288190616`.

A 20% lighter version of the original color is `4294295735`, and `4286928977` is the 20% darker color. If you saturate the color by 10%, you get `4290542191`, and if you desaturate by 10%, it is `4290550421`.

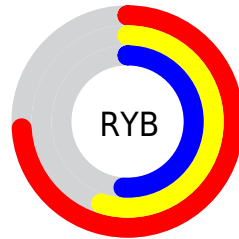
Distribution



Red (74%)

Green (54%)

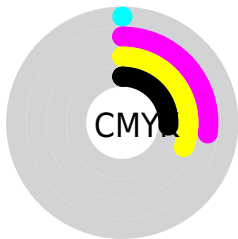
Blue (51%)



Red (74%)

Yellow (55%)

Blue (51%)

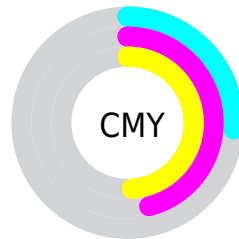


Cyan (0%)

Magenta (27%)

Yellow (31%)

Black (26%)



Cyan (26%)

Magenta (46%)

Yellow (49%)

Brightness & Saturation Gradients

These gradients show how the Android color 4290546306 changes by changing the brightness by 10 percent. The first figure shows a shift by +10% for each color and the second figure -10%.

Similar to the brightness gradients but the following saturation gradients show a change of the Android color 4290546306 by changing the saturation by 10% instead.

 4290546306

 4290546306

4294967295

 4288704617

 4294295735

 4286928977

 4294958291

 4285218874

 4294965487

 4283574820

 4281930767

 4280549376

 4278190080

 4290546306

 4290546306

 4290542191

 4290550421

 4290538076

 4290554536

 4290533706

 4290558906

 4290529591

 4290563021

 4290525476

 4290567136

 4290521361

 4290571251

 4290517504

 4290575359

 4290576383

Harmonies

Analogous

The Analogous color harmony consists of three colors that are next to each other on the color wheel.



4290545813



4290546306



4289957749

Triad

The Triadic color harmony groups three colors that are evenly spaced from another and form a triangle on the color wheel.



4290546306



4286095236



4286748604

Complementary

The Complementary color scheme is a pair of colors which are on the opposite of each other on the color wheel.



4290546306



4286756028

Split Complementary

Split-complementary colors differ from the complementary color scheme. The scheme consists of three colors, the original color and two neighbors of the complement color.



4285177271



4290546306



4284916119

Square

The Square scheme is like the rectangle color scheme, but the four colors are evenly spaced on the color wheel.



4290546306



4287470454



4284457130



4288450742

Rectangle

The Rectangle color scheme consists of four colors that form a rectangle on the color wheel.



4290546306



4289237872



4284457130



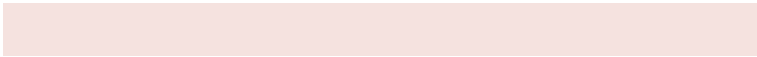
4286159291

Sweetspot

The Sweet Spot groups the original color and five complimentary colors.



4290546306



4294304479



4290544308



4286213997



4294638330



4286216826

Same Dimension

The Same Dimension uses a secret algorithm to generate beautiful new colors.



4290546306



4294289306



4290553730



4284372565



4288550400



4280222720

Inverse Universe

The Inverse Universe completely reimagines the original color for something new.



4286756028



4288342261



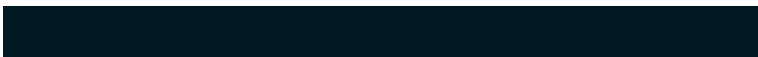
4286748604



4283784542



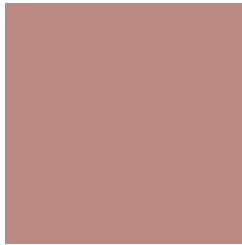
4278225054



4278196767

Previews

White Background



This preview shows how the Android color 4290546306 looks on a white background.

Color Contrast Check

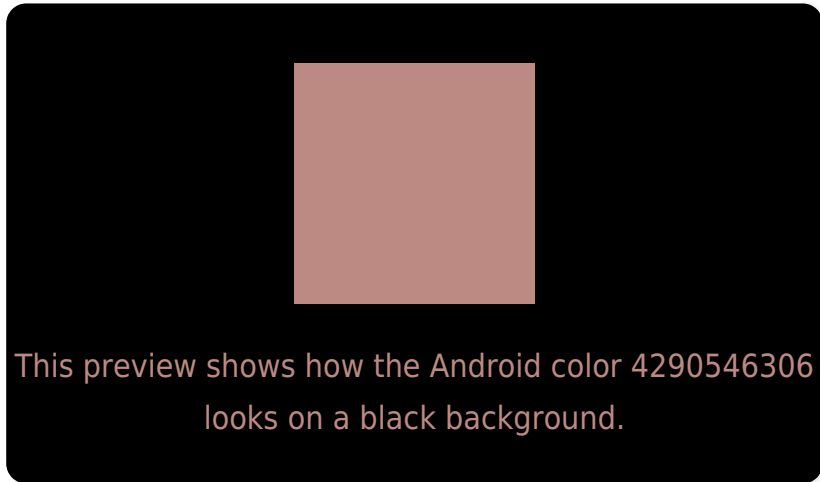
Large Text (above 18pt) WCAG AA × Fail

Any Text WCAG AA × Fail

Large Text (above 18pt) WCAG AAA × Fail

Any Text WCAG AAA × Fail

Black Background



Color Contrast Check

Large Text (above 18pt) WCAG AA ✓ Pass

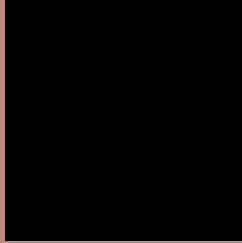
Any Text WCAG AA ✓ Pass

Large Text (above 18pt) WCAG AAA ✓ Pass

Any Text WCAG AAA ✓ Pass

If you want to check with other color combinations, try the [Color Contrast Checker](#).

Android 4290546306 Background



This preview shows how black text looks on a background with the Android color 4290546306.



This preview shows how white text looks on a background with the Android color 4290546306.

Color Blindness Simulation

Color vision deficiency is a very complex topic, and I could not describe the different causes any better than Wikipedia does, so if you want to learn more, you should check out their [article about color blindness](#).

Dichromacy



Original Color
[4290546306](#)

Protanopia
[4288452232](#)

Deuteranopia
[4289499521](#)

Trichromacy



Original Color
4290546306

Protanomaly
4289237638

Deuteranomaly
4289891969

Tritanomaly
4290611596

Monochromacy



Original Color
4290546306

Achromatopsia
4288190616

Achromatomaly
4289041296

CSS Examples

Text

The CSS property to change the color of the text to Android 4290546306 is called "color". The color property can be set on classes, ids or directly on the HTML element.

This example shows how text in the color `rgb(188, 138, 130)` looks like.

```
.text, #text, p{  
    color:rgb(188, 138, 130)  
}
```

If you want to add a text shadow in that color use the text-shadow property, you can generate a text shadow directly with our [CSS Text Shadow Generator](#).

Here you see how black text with a 4 pixel rgb(188, 138, 130) colored shadow looks like.

```
.shadow{ text-shadow: 4px 4px 2px rgb(188, 138, 130) }
```

Border

The CSS property to change the border of an element to Android 4290546306 is called "border". The border property can be set on classes, ids or directly on the HTML element.

This example shows the color as border, it can be applied via the CSS property "border" or "border-color".

```
.border, #border, table{ border:4px solid rgb(188, 138, 130) }
```

If only the border color should be changed use the property `border-color`.

```
.border{ border-color:rgb(188, 138, 130) }
```

If you want to add a box shadow in that color use:

Here you see how a box with a 4 pixel `rgb(188, 138, 130)` colored shadow looks like.

```
.boxshadow{ -moz-box-shadow:4px 4px 4px  
4px rgb(188, 138, 130); -webkit-box-  
shadow:4px 4px 4px 4px rgb(188, 138, 130);  
box-shadow:4px 4px 4px 4px rgb(188, 138,  
130) }
```

Background

The CSS property to change the background color of an element to Android 4290546306 is called "background". The background property can be set on classes, ids or directly on the HTML element.

```
.background, #background, body{  
background: rgb(188, 138, 130) }
```

If only the background color should be changed can be used:

```
.background{ background-color: rgb(188,  
138, 130) }
```

This example shows the color as background, it is applied via the CSS property "background".

To optimize and compress your CSS code, you can use our [online CSS compressor and optimizer](#) based on csstidy. If you want to create a linear or radial gradient as background or border, check our [CSS Gradient Generator](#).

Hey! You found this booklet interesting? Support Converting Colors with the new Membership Option!

The pro membership hides all ads, plus gives you double the colors in the color bucket, and more awesome pro features!

[Learn more, Memberships starting at \\$2.50/m!](#)

**Follow me
on Twitter!**

@ConvertingColor