

Converting Colors

Android(4290547334)

Have a look what the booklet for
Android(4290547334) contains.

Android(4290547334)	3
<i>Conversions</i>	4
<i>Details</i>	6
<i>Harmonies</i>	11
<i>Previews</i>	23
<i>Color Blindness Simulation</i>	26
<i>CSS Examples</i>	29

Color

Android(4290547334)

Conversions

Conversions Part 1

Format	Color
Hex	BC8E86
RGB	188, 142, 134
RGB Percent	74%, 56%, 53%
CMY	0.2627, 0.4431, 0.4745
CMYK	0.00, 0.24, 0.29, 0.26
HSL	9°, 29%, 63%
HSV	9°, 29%, 74%
XYZ	34.7151, 31.7586, 26.8546
YIQ	154.8420, 29.9840, 7.2640

Conversions

Conversions Part 2

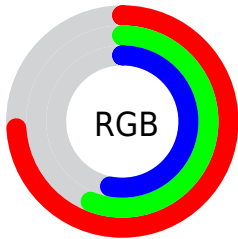
Format	Color
R _Y B	188, 143, 134
Decimal	12357254
CIE Lab	63.14, 16.27, 11.03
CIE LCh	63, 19.659, 34.124
Yxy	31.7586, 0.3720, 0.3403
Android (android.graphics.Color)	4290547334 (0xFFBC8E86)
YUV	154.8420, -10.2751, 29.0796
Hunter-Lab	56.3548, 11.3370, 11.1950

Details

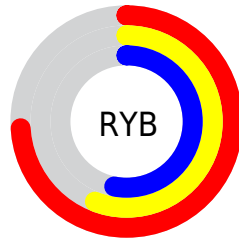
The Android color `4290547334` is a light color, and the websafe version is hex `CC9999`. A complement of this color would be `4287018172`, and the grayscale version is `4288387995`.

A 20% lighter version of the original color is `4294296763`, and `4286995540` is the 20% darker color. If you saturate the color by 10%, you get `4290543219`, and if you desaturate by 10%, it is `4290551449`.

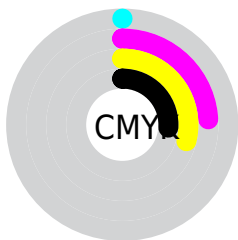
Distribution



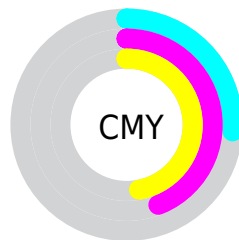
- Red (74%)
- Green (56%)
- Blue (53%)



- Red (74%)
- Yellow (56%)
- Blue (53%)



- Cyan (0%)
- Magenta (24%)
- Yellow (29%)
- Black (26%)



- Cyan (26%)
- Magenta (44%)
- Yellow (47%)

Brightness & Saturation Gradients

These gradients show how the Android color 4290547334 changes by changing the brightness by 10 percent. The first figure shows a shift by +10% for each color and the second figure -10%.

Similar to the brightness gradients but the following saturation gradients show a change of the Android color 4290547334 by changing the saturation by 10% instead.

 4290547334

 4290547334

4294967295

 4288705645

 4294296763

 4286995540

 4294959319

 4285219901

 4294966771

 4283575591

 4281997331

 4280614912

 4278190080

 4290547334

 4290547334

 4290543219

 4290551449

 4290539104

 4290555564

 4290534990

 4290559678

 4290530875

 4290563793

 4290526760

 4290567908

 4290522645

 4290572023

 4290518530

 4290576127

 4290518016

 4290576383

Harmonies

Analogous

The Analogous color harmony consists of three colors that are next to each other on the color wheel.



4290546839



4290547334



4289958778

Triad

The Triadic color harmony groups three colors that are evenly spaced from another and form a triangle on the color wheel.



4290547334



4286423433



4287142587

Complementary

The Complementary color scheme is a pair of colors which are on the opposite of each other on the color wheel.



4290547334



4287018172

Split Complementary

Split-complementary colors differ from the complementary color scheme. The scheme consists of three colors, the original color and two neighbors of the complement color.



4285702072



4290547334



4285375387

Square

The Square scheme is like the rectangle color scheme, but the four colors are evenly spaced on the color wheel.



4290547334



4287667836



4285047468



4288648374

Rectangle

The Rectangle color scheme consists of four colors that form a rectangle on the color wheel.



4290547334



4289304182



4285047468



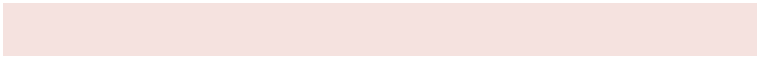
4286618555

Sweetspot

The Sweet Spot groups the original color and five complimentary colors.



4290547334



4294304479



4290545333



4286213997



4294638330



4286216826

Same Dimension

The Same Dimension uses a secret algorithm to generate beautiful new colors.



4290547334



4294291106



4290553990



4284372565



4288550656



4280222976

Inverse Universe

The Inverse Universe completely reimagines the original color for something new.



4287018172



4288866549



4287011516



4283784542



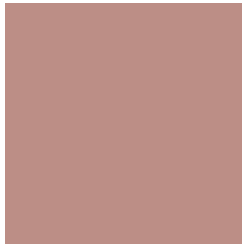
4278224798



4278196767

Previews

White Background



This preview shows how the Android color 4290547334 looks on a white background.

Color Contrast Check

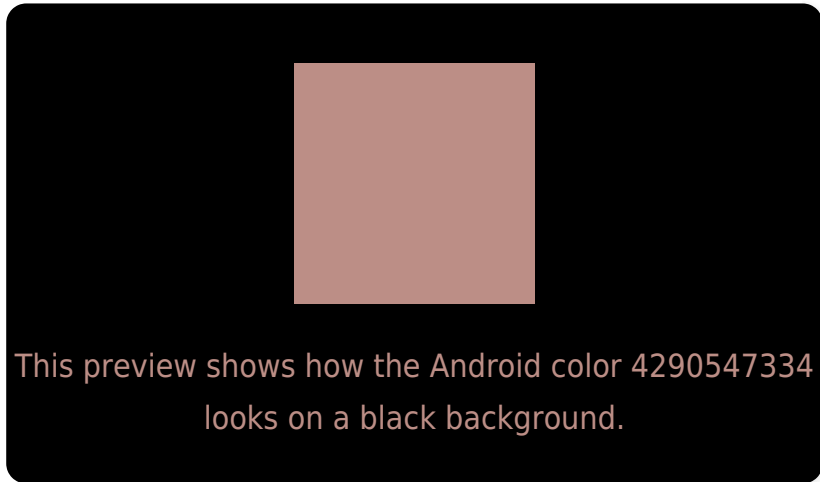
Large Text (above 18pt) WCAG AA × Fail

Any Text WCAG AA × Fail

Large Text (above 18pt) WCAG AAA × Fail

Any Text WCAG AAA × Fail

Black Background



Color Contrast Check

Large Text (above 18pt) WCAG AA ✓ Pass

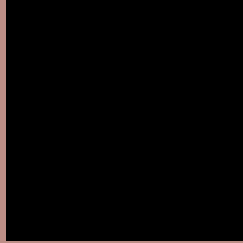
Any Text WCAG AA ✓ Pass

Large Text (above 18pt) WCAG AAA ✓ Pass

Any Text WCAG AAA ✓ Pass

If you want to check with other color combinations, try the [Color Contrast Checker](#).

Android 4290547334 Background



This preview shows how black text looks on a background with the Android color 4290547334.



This preview shows how white text looks on a background with the Android color 4290547334.

Color Blindness Simulation

Color vision deficiency is a very complex topic, and I could not describe the different causes any better than Wikipedia does, so if you want to learn more, you should check out their [article about color blindness](#).

Dichromacy



Original Color
4290547334

Protanopia
4288649611

Deuteranopia
4289696645



Tritanopia
4290677910

Trichromacy



Original Color
4290547334

Protanomaly
4289369481

Deuteranomaly
4290023813

Tritanomaly
4290612624

Monochromacy



Original Color
4290547334

Achromatopsia
4288387995

Achromatomaly
4289173139

CSS Examples

Text

The CSS property to change the color of the text to Android 4290547334 is called "color". The color property can be set on classes, ids or directly on the HTML element.

This example shows how text in the color `rgb(188, 142, 134)` looks like.

```
.text, #text, p{  
    color:rgb(188, 142, 134)  
}
```

If you want to add a text shadow in that color use the text-shadow property, you can generate a text shadow directly with our [CSS Text Shadow Generator](#).

Here you see how black text with a 4 pixel rgb(188, 142, 134) colored shadow looks like.

```
.shadow{ text-shadow: 4px 4px 2px rgb(188, 142, 134) }
```

Border

The CSS property to change the border of an element to Android 4290547334 is called "border". The border property can be set on classes, ids or directly on the HTML element.

This example shows the color as border, it can be applied via the CSS property "border" or "border-color".

```
.border, #border, table{ border:4px solid rgb(188, 142, 134) }
```

If only the border color should be changed use the property `border-color`.

```
.border{ border-color:rgb(188, 142, 134) }
```

If you want to add a box shadow in that color use:

Here you see how a box with a 4 pixel `rgb(188, 142, 134)` colored shadow looks like.

```
.boxshadow{ -moz-box-shadow:4px 4px 4px  
4px rgb(188, 142, 134); -webkit-box-  
shadow:4px 4px 4px 4px rgb(188, 142, 134);  
box-shadow:4px 4px 4px 4px rgb(188, 142,  
134) }
```

Background

The CSS property to change the background color of an element to Android 4290547334 is called "background". The background property can be set on classes, ids or directly on the HTML element.

```
.background, #background, body{  
background: rgb(188, 142, 134) }
```

If only the background color should be changed can be used:

```
.background{ background-color: rgb(188,  
142, 134) }
```

This example shows the color as background, it is applied via the CSS property "background".

To optimize and compress your CSS code, you can use our [online CSS compressor and optimizer](#) based on csstidy. If you want to create a linear or radial gradient as background or border, check our [CSS Gradient Generator](#).

Hey! You found this booklet interesting? Support Converting Colors with the new Membership Option!

The pro membership hides all ads, plus gives you double the colors in the color bucket, and more awesome pro features!

[Learn more, Memberships starting at \\$2.50/m!](#)

**Follow me
on Twitter!**

@ConvertingColor