

Converting Colors

Android(4290549399)

Have a look what the booklet for
Android(4290549399) contains.

Android(4290549399)	3
<i>Conversions</i>	4
<i>Details</i>	6
<i>Harmonies</i>	11
<i>Previews</i>	23
<i>Color Blindness Simulation</i>	26
<i>CSS Examples</i>	29

Color

Android(4290549399)

Conversions

Conversions Part 1

Format	Color
Hex	BC9697
RGB	188, 150, 151
RGB Percent	74%, 59%, 59%
CMY	0.2627, 0.4118, 0.4078
CMYK	0.00, 0.20, 0.20, 0.26
HSL	358°, 22%, 66%
HSV	358°, 20%, 74%
XYZ	37.2313, 34.7384, 34.0210
YIQ	161.4760, 22.3270, 8.3670

Conversions

Conversions Part 2

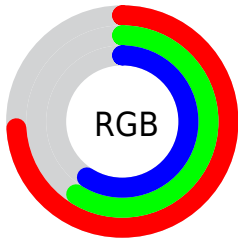
Format	Color
RYB	188, 150, 151
Decimal	12359319
CIELab	65.54, 14.36, 4.88
CIElCh	66, 15.163, 18.772
Yxy	34.7384, 0.3513, 0.3277
Android (android.graphics.Color)	4290549399 (0xFFBC9697)
YUV	161.4760, -5.1647, 23.2615
Hunter-Lab	58.9393, 9.6126, 7.0341

Details

The Android color `4290549399` is a light color, and the websafe version is hex `CC9999`. A complement of this color would be `4288068795`, and the grayscale version is `4288848546`.

A 20% lighter version of the original color is `4294298829`, and `4286997348` is the 20% darker color. If you saturate the color by 10%, you get `4290544517`, and if you desaturate by 10%, it is `4290554281`.

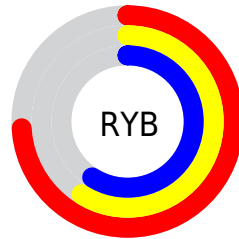
Distribution



Red (74%)

Green (59%)

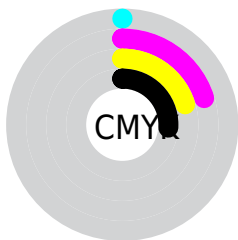
Blue (59%)



Red (74%)

Yellow (59%)

Blue (59%)

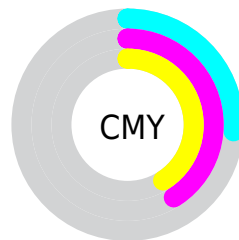


Cyan (0%)

Magenta (20%)

Yellow (20%)

Black (26%)



Cyan (26%)

Magenta (41%)

Yellow (41%)

Brightness & Saturation Gradients

These gradients show how the Android color 4290549399 changes by changing the brightness by 10 percent. The first figure shows a shift by +10% for each color and the second figure -10%.

Similar to the brightness gradients but the following saturation gradients show a change of the Android color 4290549399 by changing the saturation by 10% instead.

 4290549399

 4290549399

4294967295

 4288773245

 4294298829

 4286997348

 4294961385

 4285287244

 4283642934

 4282130208

 4280682505

 4278190080

 4290549399

 4290549399

 4290544517

 4290554281

 4290539634

 4290559164

 4290535008

 4290563790

 4290530126

 4290568672

 4290525243

 4290573555

 4290520361

 4290576383

 4290515479

 4290510853

Harmonies

Analogous

The Analogous color harmony consists of three colors that are next to each other on the color wheel.



4290287269



4290549399



4290353291

Triad

The Triadic color harmony groups three colors that are evenly spaced from another and form a triangle on the color wheel.



4290549399



4287735181



4287275705

Complementary

The Complementary color scheme is a pair of colors which are on the opposite of each other on the color wheel.



4290549399



4288068795

Split Complementary

Split-complementary colors differ from the complementary color scheme. The scheme consists of three colors, the original color and two neighbors of the complement color.



4286490035



4290549399



4286883737

Square

The Square scheme is like the rectangle color scheme, but the four colors are evenly spaced on the color wheel.



4290549399



4288782725



4286359463



4288388537

Rectangle

The Rectangle color scheme consists of four colors that form a rectangle on the color wheel.



4290549399



4289960838



4286359463



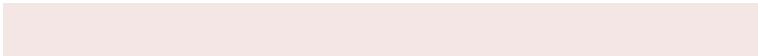
4286948280

Sweetspot

The Sweet Spot groups the original color and five complimentary colors.



4290549399



4294305510



4290483900



4286214770



4294638330



4286216826

Same Dimension

The Same Dimension uses a secret algorithm to generate beautiful new colors.



4290549399



4294294204



4290554006



4284372309



4288544772



4280221697

Inverse Universe

The Inverse Universe completely reimagines the original color for something new.



4290549399



4294294204



4288064188



4284372309



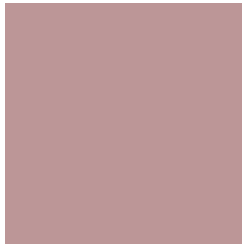
4288544772



4280221697

Previews

White Background



This preview shows how the Android color 4290549399 looks on a white background.

Color Contrast Check

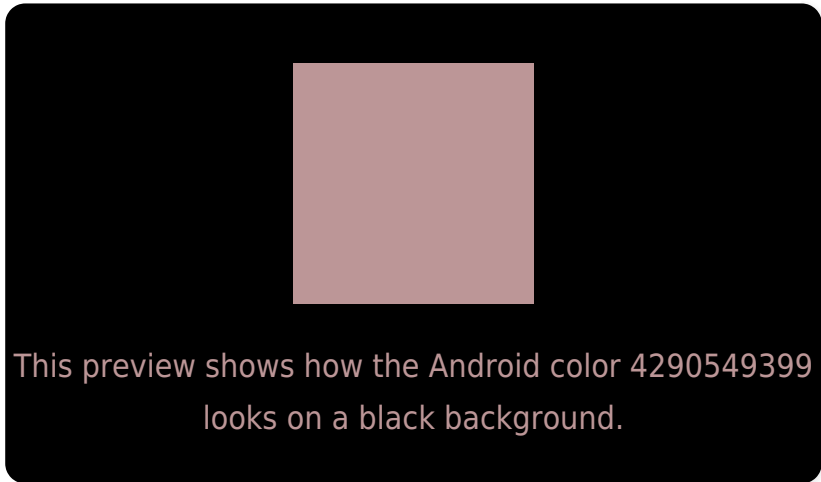
Large Text (above 18pt) WCAG AA × Fail

Any Text WCAG AA × Fail

Large Text (above 18pt) WCAG AAA × Fail

Any Text WCAG AAA × Fail

Black Background



Color Contrast Check

Large Text (above 18pt) WCAG AA ✓ Pass

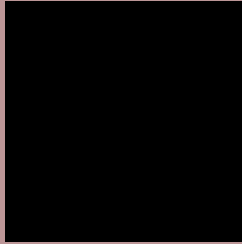
Any Text WCAG AA ✓ Pass

Large Text (above 18pt) WCAG AAA ✓ Pass

Any Text WCAG AAA ✓ Pass

If you want to check with other color combinations, try the [Color Contrast Checker](#).

Android 4290549399 Background



This preview shows how black text looks on a background with the Android color 4290549399.



This preview shows how white text looks on a background with the Android color 4290549399.

Color Blindness Simulation

Color vision deficiency is a very complex topic, and I could not describe the different causes any better than Wikipedia does, so if you want to learn more, you should check out their [article about color blindness](#).

Dichromacy





Tritanopia
4290614688

Trichromacy



Original Color
4290549399

Protanomaly
4289502362

Deuteranomaly
4290156950

Tritanomaly
4290614685

Monochromacy



Original Color
4290549399

Achromatopsia
4288782753

Achromatomaly
4289437085

CSS Examples

Text

The CSS property to change the color of the text to Android 4290549399 is called "color". The color property can be set on classes, ids or directly on the HTML element.

This example shows how text in the color `rgb(188, 150, 151)` looks like.

```
.text, #text, p{  
    color:rgb(188, 150, 151)  
}
```

If you want to add a text shadow in that color use the text-shadow property, you can generate a text shadow directly with our [CSS Text Shadow Generator](#).

Here you see how black text with a 4 pixel rgb(188, 150, 151) colored shadow looks like.

```
.shadow{ text-shadow: 4px 4px 2px rgb(188, 150, 151) }
```

Border

The CSS property to change the border of an element to Android 4290549399 is called "border". The border property can be set on classes, ids or directly on the HTML element.

This example shows the color as border, it can be applied via the CSS property "border" or "border-color".

```
.border, #border, table{ border:4px solid rgb(188, 150, 151) }
```

If only the border color should be changed use the property `border-color`.

```
.border{ border-color:rgb(188, 150, 151) }
```

If you want to add a box shadow in that color use:

Here you see how a box with a 4 pixel `rgb(188, 150, 151)` colored shadow looks like.

```
.boxshadow{ -moz-box-shadow:4px 4px 4px  
4px rgb(188, 150, 151); -webkit-box-  
shadow:4px 4px 4px 4px rgb(188, 150, 151);  
box-shadow:4px 4px 4px 4px rgb(188, 150,  
151) }
```

Background

The CSS property to change the background color of an element to Android 4290549399 is called "background". The background property can be set on classes, ids or directly on the HTML element.

```
.background, #background, body{  
background: rgb(188, 150, 151) }
```

If only the background color should be changed can be used:

```
.background{ background-color: rgb(188,  
150, 151) }
```

This example shows the color as background, it is applied via the CSS property "background".

To optimize and compress your CSS code, you can use our [online CSS compressor and optimizer](#) based on csstidy. If you want to create a linear or radial gradient as background or border, check our [CSS Gradient Generator](#).

Hey! You found this booklet interesting? Support Converting Colors with the new Membership Option!

The pro membership hides all ads, plus gives you double the colors in the color bucket, and more awesome pro features!

[Learn more, Memberships starting at \\$2.50/m!](#)

**Follow me
on Twitter!**

@ConvertingColor