

# Converting Colors

Android(4290551939)

Have a look what the booklet for  
Android(4290551939) contains.

<b>Android(4290551939)</b> .....	3
<b><i>Conversions</i></b> .....	4
<b><i>Details</i></b> .....	6
<b><i>Harmonies</i></b> .....	11
<b><i>Previews</i></b> .....	23
<b><i>Color Blindness Simulation</i></b> .....	26
<b><i>CSS Examples</i></b> .....	29

# **Color**

**Android(4290551939)**

# Conversions

## Conversions Part 1

Format	Color
Hex	BCA083
RGB	188, 160, 131
RGB Percent	74%, 63%, 51%
CMY	0.2627, 0.3725, 0.4863
CMYK	0.00, 0.15, 0.30, 0.26
HSL	31°, 30%, 63%
HSV	31°, 30%, 74%
XYZ	37.4066, 37.4717, 26.7339
YIQ	165.0660, 25.9970, -3.0830

# Conversions

## Conversions Part 2

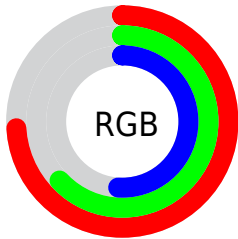
<b>Format</b>	<b>Color</b>
<b>RYB</b>	186, 188, 131
Decimal	12361859
CIELab	67.63, 5.94, 18.95
CIELCh	68, 19.862, 72.589
Yxy	37.4717, 0.3681, 0.3688
Android (android.graphics.Color)	4290551939 (0xFFBCA083)
YUV	165.0660, -16.7945, 20.1131
Hunter-Lab	61.2141, 1.9527, 16.9562

# Details

The Android color `4290551939` is a light color, and the websafe version is hex `CC9966`. A complement of this color would be `4286816188`, and the grayscale version is `4289045925`.

A 20% lighter version of the original color is `4294301624`, and `4286999889` is the 20% darker color. If you saturate the color by 10%, you get `4290549616`, and if you desaturate by 10%, it is `4290554262`.

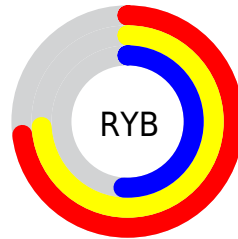
# Distribution



Red (74%)

Green (63%)

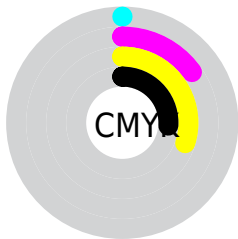
Blue (51%)



Red (73%)

Yellow (74%)

Blue (51%)

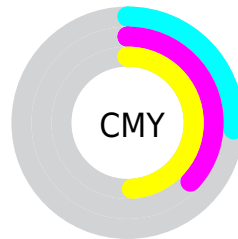


Cyan (0%)

Magenta (15%)

Yellow (30%)

Black (26%)



Cyan (26%)

Magenta (37%)

Yellow (49%)

# Brightness & Saturation Gradients

These gradients show how the Android color 4290551939 changes by changing the brightness by 10 percent. The first figure shows a shift by +10% for each color and the second figure -10%.

Similar to the brightness gradients but the following saturation gradients show a change of the Android color 4290551939 by changing the saturation by 10% instead.





4290551939



4290551939

4294967295



4288775786



4294301624



4286999889



4294964180



4285289530



4294967280



4283645220



4282066703



4280554240



4278190080



4290551939



4290551939



4290549616



4290554262

 4290547293

 4290556585

 4290544715

 4290559163

 4290542392

 4290561486

 4290540069

 4290563809

 4290537746

 4290566132

 4290535424

 4290568703

 4290571007

 4290573311

# Harmonies

## Analogous

The Analogous color harmony consists of three colors that are next to each other on the color wheel.



4291271565



4290551939



4289439362

# Triad

The Triadic color harmony groups three colors that are evenly spaced from another and form a triangle on the color wheel.



4290551939



4285902764



4289830591

# Complementary

The Complementary color scheme is a pair of colors which are on the opposite of each other on the color wheel.



4290551939



4286816188

# Split Complementary

Split-complementary colors differ from the complementary color scheme. The scheme consists of three colors, the original color and two neighbors of the complement color.



4288324807



4290551939



4285902268

# Square

The Square scheme is like the rectangle color scheme, but the four colors are evenly spaced on the color wheel.



4290551939



4286819993



4286818758



4290943408

# Rectangle

The Rectangle color scheme consists of four colors that form a rectangle on the color wheel.



4290551939



4288522630



4286818758



4289372355

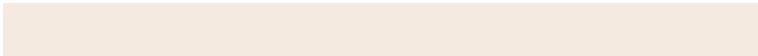


# Sweetspot

The Sweet Spot groups the original color and five complimentary colors.



4290551939



4294306527



4290544544



4286215277



4294638330



4286216826



# Same Dimension

The Same Dimension uses a secret algorithm to generate beautiful new colors.



4290551939



4294298269



4290559107



4284373589



4288565248



4280225792

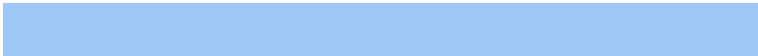


# Inverse Universe

The Inverse Universe completely reimagines the original color for something new.



4286816188



4288530677



4286809020



4283783774



4278210206

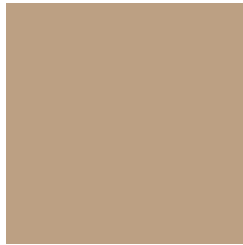


4278193951



# Previews

## White Background



This preview shows how the Android color 4290551939 looks on a white background.

## Color Contrast Check

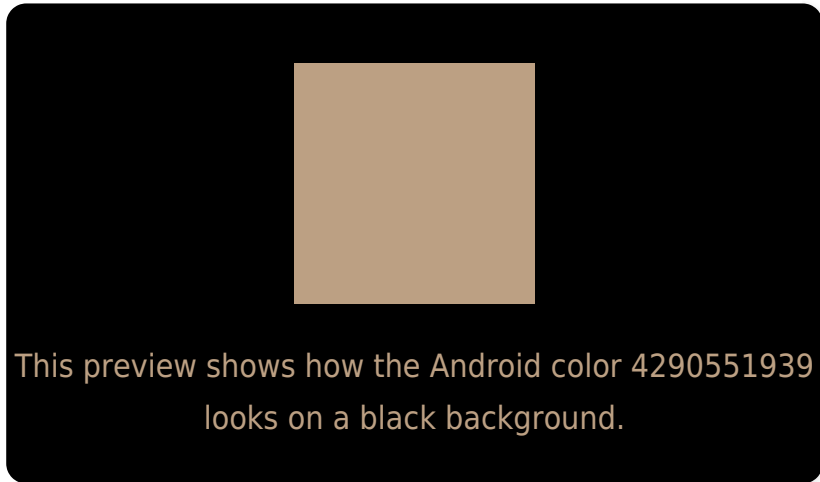
Large Text (above 18pt) WCAG AA × Fail

Any Text WCAG AA × Fail

Large Text (above 18pt) WCAG AAA × Fail

Any Text WCAG AAA × Fail

# Black Background



## Color Contrast Check

Large Text (above 18pt) WCAG AA ✓ Pass

Any Text WCAG AA ✓ Pass

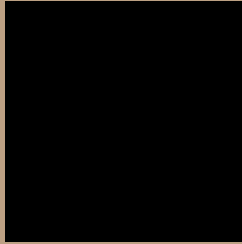
Large Text (above 18pt) WCAG AAA ✓ Pass

Any Text WCAG AAA ✓ Pass

If you want to check with other color combinations, try the [Color Contrast Checker](#).



# Android 4290551939 Background



This preview shows how black text looks on a background with the Android color 4290551939.



This preview shows how white text looks on a background with the Android color 4290551939.

# Color Blindness Simulation

Color vision deficiency is a very complex topic, and I could not describe the different causes any better than Wikipedia does, so if you want to learn more, you should check out their [article about color blindness](#).

## Dichromacy



**Original Color**  
4290551939

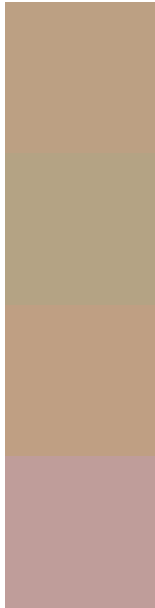
**Protanopia**  
4289701253

**Deuteranopia**  
4290813571



**Tritanopia**  
4290812839

# Trichromacy



**Original Color**  
4290551939

**Protanomaly**  
4290028420

**Deuteranomaly**  
4290748291

**Tritanomaly**  
4290747802

# Monochromacy



**Original Color**  
4290551939

**Achromatopsia**  
4289045925

**Achromatomaly**  
4289569689

# CSS Examples

## Text

The CSS property to change the color of the text to Android 4290551939 is called "color". The color property can be set on classes, ids or directly on the HTML element.

This example shows how text in the color `rgb(188, 160, 131)` looks like.

```
.text, #text, p{  
    color:rgb(188, 160, 131)  
}
```

If you want to add a text shadow in that color use the text-shadow property, you can generate a text shadow directly with our [CSS Text Shadow Generator](#).

Here you see how black text with a 4 pixel rgb(188, 160, 131) colored shadow looks like.

```
.shadow{ text-shadow: 4px 4px 2px rgb(188, 160, 131) }
```

## Border

The CSS property to change the border of an element to Android 4290551939 is called "border". The border property can be set on classes, ids or directly on the HTML element.

This example shows the color as border, it can be applied via the CSS property "border" or "border-color".

```
.border, #border, table{ border:4px solid rgb(188, 160, 131) }
```

If only the border color should be changed use the property `border-color`.

```
.border{ border-color:rgb(188, 160, 131) }
```

If you want to add a box shadow in that color use:

Here you see how a box with a 4 pixel `rgb(188, 160, 131)` colored shadow looks like.

```
.boxshadow{ -moz-box-shadow:4px 4px 4px  
4px rgb(188, 160, 131); -webkit-box-  
shadow:4px 4px 4px 4px rgb(188, 160, 131);  
box-shadow:4px 4px 4px 4px rgb(188, 160,  
131) }
```

# Background

The CSS property to change the background color of an element to Android 4290551939 is called "background". The background property can be set on classes, ids or directly on the HTML element.

```
.background, #background, body{  
background: rgb(188, 160, 131) }
```

If only the background color should be changed can be used:

```
.background{ background-color: rgb(188,  
160, 131) }
```

This example shows the color as background, it is applied via the CSS property "background".

To optimize and compress your CSS code, you can use our [online CSS compressor and optimizer](#) based on csstidy. If you want to create a linear or radial gradient as background or border, check our [CSS Gradient Generator](#).



Hey! You found this booklet interesting? Support Converting Colors with the new Membership Option!

The pro membership hides all ads, plus gives you double the colors in the color bucket, and more awesome pro features!

**[Learn more, Memberships starting at \\$2.50/m!](#)**

**Follow me  
on Twitter!**

@ConvertingColor