

Converting Colors

Android(4290551943)

Have a look what the booklet for
Android(4290551943) contains.

Android(4290551943)	3
<i>Conversions</i>	4
<i>Details</i>	6
<i>Harmonies</i>	11
<i>Previews</i>	23
<i>Color Blindness Simulation</i>	26
<i>CSS Examples</i>	29

Color

Android(4290551943)

Conversions

Conversions Part 1

Format	Color
Hex	BCA087
RGB	188, 160, 135
RGB Percent	74%, 63%, 53%
CMY	0.2627, 0.3725, 0.4706
CMYK	0.00, 0.15, 0.28, 0.26
HSL	28°, 28%, 63%
HSV	28°, 28%, 74%
XYZ	37.6830, 37.5822, 28.1897
YIQ	165.5220, 24.7130, -1.8390

Conversions

Conversions Part 2

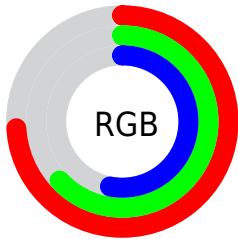
Format	Color
R _Y B	188, 182, 135
Decimal	12361863
CIE Lab	67.71, 6.49, 16.86
CIE LCh	68, 18.067, 68.949
Yxy	37.5822, 0.3642, 0.3633
Android (android.graphics.Color)	4290551943 (0xFFBCA087)
YUV	165.5220, -15.0473, 19.7132
Hunter-Lab	61.3044, 2.4391, 15.6497

Details

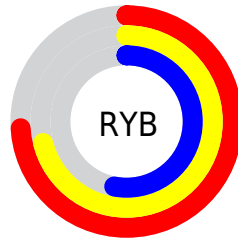
The Android color `4290551943` is a light color, and the websafe version is hex `CC9999`. A complement of this color would be `4287079356`, and the grayscale version is `4289111718`.

A 20% lighter version of the original color is `4294301628`, and `4286999893` is the 20% darker color. If you saturate the color by 10%, you get `4290549364`, and if you desaturate by 10%, it is `4290554522`.

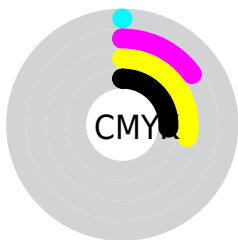
Distribution



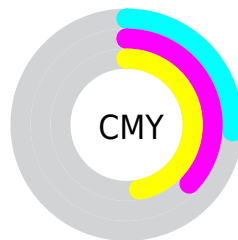
- Red (74%)
- Green (63%)
- Blue (53%)



- Red (74%)
- Yellow (71%)
- Blue (53%)



- Cyan (0%)
- Magenta (15%)
- Yellow (28%)
- Black (26%)



- Cyan (26%)
- Magenta (37%)
- Yellow (47%)

Brightness & Saturation Gradients

These gradients show how the Android color 4290551943 changes by changing the brightness by 10 percent. The first figure shows a shift by +10% for each color and the second figure -10%.

Similar to the brightness gradients but the following saturation gradients show a change of the Android color 4290551943 by changing the saturation by 10% instead.



4290551943



4290551943

4294967295



4288775790



4294301628



4286999893



4294964184



4285289534



4294967285



4283645224



4282066707



4280619776



4278190080



4290551943



4290551943



4290549364



4290554522

 4290546785

 4290557101

 4290544207

 4290559679

 4290541628

 4290562258

 4290539049

 4290564837

 4290536470

 4290567416

 4290533891

 4290569983

 4290533632

 4290572287

 4290574847

Harmonies

Analogous

The Analogous color harmony consists of three colors that are next to each other on the color wheel.



4291140753



4290551943



4289570181

Triad

The Triadic color harmony groups three colors that are evenly spaced from another and form a triangle on the color wheel.



4290551943



4286361257



4289634238

Complementary

The Complementary color scheme is a pair of colors which are on the opposite of each other on the color wheel.



4290551943



4287079356

Split Complementary

Split-complementary colors differ from the complementary color scheme. The scheme consists of three colors, the original color and two neighbors of the complement color.



4288259525



4290551943



4286229945

Square

The Square scheme is like the rectangle color scheme, but the four colors are evenly spaced on the color wheel.



4290551943



4287147417



4286950083



4290681777

Rectangle

The Rectangle color scheme consists of four colors that form a rectangle on the color wheel.



4290551943



4288719240



4286950083



4289176001

Sweetspot

The Sweet Spot groups the original color and five complimentary colors.



4290551943



4294306529



4290545571



4286215278



4294638330



4286216826

Same Dimension

The Same Dimension uses a secret algorithm to generate beautiful new colors.



4290551943



4294298018



4290558599



4284373333



4288563968



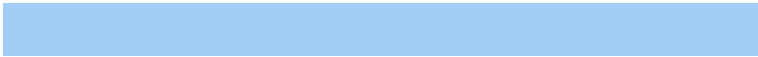
4280225280

Inverse Universe

The Inverse Universe completely reimagines the original color for something new.



4287079356



4288859893



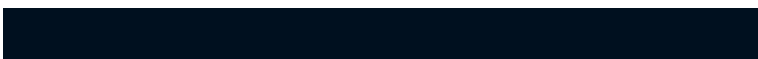
4287072700



4283783774



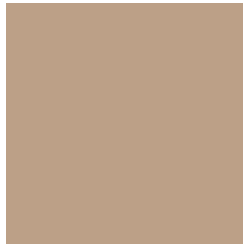
4278211742



4278194207

Previews

White Background



This preview shows how the Android color 4290551943 looks on a white background.

Color Contrast Check

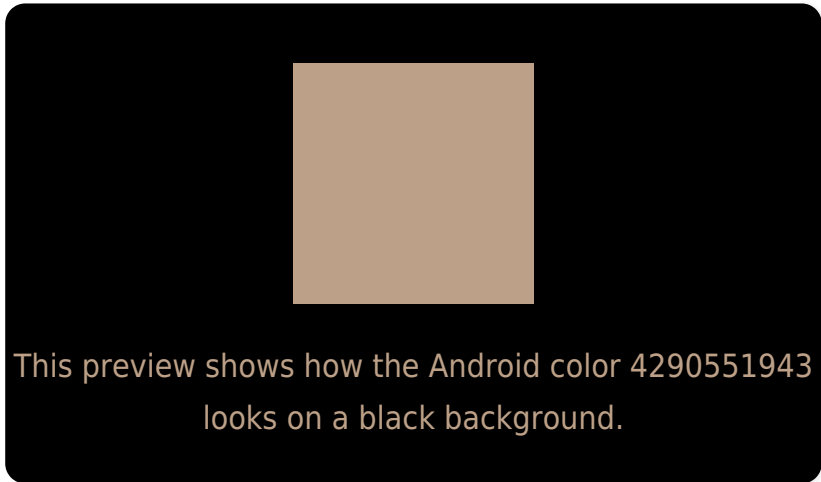
Large Text (above 18pt) WCAG AA × Fail

Any Text WCAG AA × Fail

Large Text (above 18pt) WCAG AAA × Fail

Any Text WCAG AAA × Fail

Black Background



Color Contrast Check

Large Text (above 18pt) WCAG AA ✓ Pass

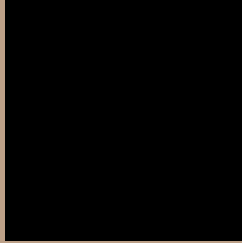
Any Text WCAG AA ✓ Pass

Large Text (above 18pt) WCAG AAA ✓ Pass

Any Text WCAG AAA ✓ Pass

If you want to check with other color combinations, try the [Color Contrast Checker](#).

Android 4290551943 Background



This preview shows how black text looks on a background with the Android color 4290551943.



This preview shows how white text looks on a background with the Android color 4290551943.

Color Blindness Simulation

Color vision deficiency is a very complex topic, and I could not describe the different causes any better than Wikipedia does, so if you want to learn more, you should check out their [article about color blindness](#).


Dichromacy



Original Color
4290551943

Protanopia
4289635721

Deuteranopia
4290748295



Tritanopia
4290812839

Trichromacy



Original Color

4290551943

Protanomaly

4289962888

Deuteranomaly

4290682759

Tritanomaly

4290747803

Monochromacy



Original Color

4290551943

Achromatopsia

4289111718

Achromatomaly

4289635483

CSS Examples

Text

The CSS property to change the color of the text to Android 4290551943 is called "color". The color property can be set on classes, ids or directly on the HTML element.

This example shows how text in the color `rgb(188, 160, 135)` looks like.

```
.text, #text, p{  
    color:rgb(188, 160, 135)  
}
```

If you want to add a text shadow in that color use the text-shadow property, you can generate a text shadow directly with our [CSS Text Shadow Generator](#).

Here you see how black text with a 4 pixel rgb(188, 160, 135) colored shadow looks like.

```
.shadow{ text-shadow: 4px 4px 2px rgb(188, 160, 135) }
```

Border

The CSS property to change the border of an element to Android 4290551943 is called "border". The border property can be set on classes, ids or directly on the HTML element.

This example shows the color as border, it can be applied via the CSS property "border" or "border-color".

```
.border, #border, table{ border:4px solid rgb(188, 160, 135) }
```

If only the border color should be changed use the property `border-color`.

```
.border{ border-color:rgb(188, 160, 135) }
```

If you want to add a box shadow in that color use:

Here you see how a box with a 4 pixel `rgb(188, 160, 135)` colored shadow looks like.

```
.boxshadow{ -moz-box-shadow:4px 4px 4px  
4px rgb(188, 160, 135); -webkit-box-  
shadow:4px 4px 4px 4px rgb(188, 160, 135);  
box-shadow:4px 4px 4px 4px rgb(188, 160,  
135) }
```

Background

The CSS property to change the background color of an element to Android 4290551943 is called "background". The background property can be set on classes, ids or directly on the HTML element.

```
.background, #background, body{  
background: rgb(188, 160, 135) }
```

If only the background color should be changed can be used:

```
.background{ background-color: rgb(188,  
160, 135) }
```

This example shows the color as background, it is applied via the CSS property "background".

To optimize and compress your CSS code, you can use our [online CSS compressor and optimizer](#) based on csstidy. If you want to create a linear or radial gradient as background or border, check our [CSS Gradient Generator](#).

Hey! You found this booklet interesting? Support Converting Colors with the new Membership Option!

The pro membership hides all ads, plus gives you double the colors in the color bucket, and more awesome pro features!

[Learn more, Memberships starting at \\$2.50/m!](#)

**Follow me
on Twitter!**

@ConvertingColor