

Converting Colors

Android(4290553774)

Have a look what the booklet for
Android(4290553774) contains.

Android(4290553774)	3
<i>Conversions</i>	4
<i>Details</i>	6
<i>Harmonies</i>	11
<i>Previews</i>	23
<i>Color Blindness Simulation</i>	26
<i>CSS Examples</i>	29

Color

Android(4290553774)

Conversions

Conversions Part 1

Format	Color
Hex	BCA7AE
RGB	188, 167, 174
RGB Percent	74%, 65%, 68%
CMY	0.2627, 0.3451, 0.3176
CMYK	0.00, 0.11, 0.07, 0.26
HSL	340°, 14%, 70%
HSV	340°, 11%, 74%
XYZ	42.1977, 41.3848, 45.8084
YIQ	174.0770, 10.2690, 6.6290

Conversions

Conversions Part 2

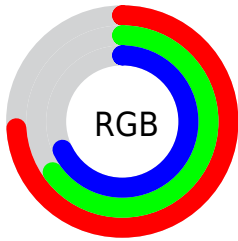
Format	Color
R _{YB}	188, 167, 174
Decimal	12363694
CIE Lab	70.44, 8.83, -0.82
CIE LCh	70, 8.866, 354.697
Yxy	41.3848, 0.3261, 0.3198
Android (android.graphics.Color)	4290553774 (0xFFBCA7AE)
YUV	174.0770, -0.0380, 12.2105
Hunter-Lab	64.3310, 4.5073, 2.8129

Details

The Android color `4290553774` is a light color, and the websafe version is hex `999999`. A complement of this color would be `4289182901`, and the grayscale version is `4289638062`.

A 20% lighter version of the original color is `4294237925`, and `4287067002` is the 20% darker color. If you saturate the color by 10%, you get `4290548897`, and if you desaturate by 10%, it is `4290558651`.

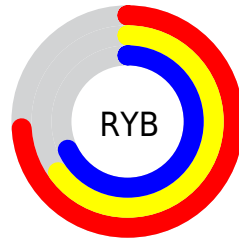
Distribution



Red (74%)

Green (65%)

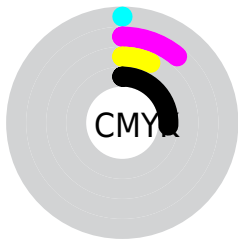
Blue (68%)



Red (74%)

Yellow (65%)

Blue (68%)

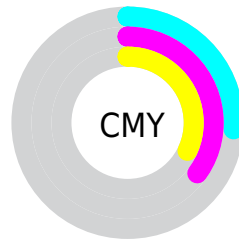


Cyan (0%)

Magenta (11%)

Yellow (7%)

Black (26%)



Cyan (26%)

Magenta (35%)

Yellow (32%)

Brightness & Saturation Gradients

These gradients show how the Android color 4290553774 changes by changing the brightness by 10 percent. The first figure shows a shift by +10% for each color and the second figure -10%.

Similar to the brightness gradients but the following saturation gradients show a change of the Android color 4290553774 by changing the saturation by 10% instead.

 4290553774

 4290553774

4294967295

 4288777619

 4294237925

 4287067002

 4294966271

 4285356641

 4283777865

 4282199347

 4280752158

 4279500804

 4278190080

 4290553774

 4290553774

 4290548897

 4290558651

 4290544021

 4290563527

 4290539400

 4290568148

 4290534524

 4290573024

 4290529647

 4290576365

 4290524771

 4290576377

 4290519894

 4290576383

 4290515274

 4290510911

Harmonies

Analogous

The Analogous color harmony consists of three colors that are next to each other on the color wheel.



4290160822



4290553774



4290684838

Triad

The Triadic color harmony groups three colors that are evenly spaced from another and form a triangle on the color wheel.



4290553774



4289506974



4288393401

Complementary

The Complementary color scheme is a pair of colors which are on the opposite of each other on the color wheel.



4290553774



4289182901

Split Complementary

Split-complementary colors differ from the complementary color scheme. The scheme consists of three colors, the original color and two neighbors of the complement color.



4288197043



4290553774



4288852131

Square

The Square scheme is like the rectangle color scheme, but the four colors are evenly spaced on the color wheel.



4290553774



4290096028



4288393642



4288851388

Rectangle

The Rectangle color scheme consists of four colors that form a rectangle on the color wheel.



4290553774



4290619553



4288393642



4288327863

Sweetspot

The Sweet Spot groups the original color and five complimentary colors.



4290553774



4294307312



4290095036



4286215799



4294638330



4286216826

Same Dimension

The Same Dimension uses a secret algorithm to generate beautiful new colors.



4290553774



4294301152



4290554791



4284372312



4288544821



4280221706

Inverse Universe

The Inverse Universe completely reimagines the original color for something new.



4290553774



4294301152



4289182140



4284372312



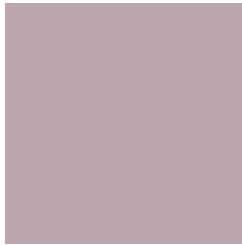
4288544821



4280221706

Previews

White Background



This preview shows how the Android color 4290553774 looks on a white background.

Color Contrast Check

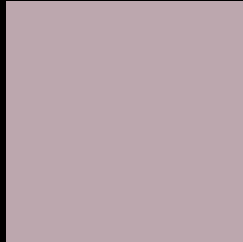
Large Text (above 18pt) WCAG AA × Fail

Any Text WCAG AA × Fail

Large Text (above 18pt) WCAG AAA × Fail

Any Text WCAG AAA × Fail

Black Background



This preview shows how the Android color 4290553774 looks on a black background.

Color Contrast Check

Large Text (above 18pt) WCAG AA ✓ Pass

Any Text WCAG AA ✓ Pass

Large Text (above 18pt) WCAG AAA ✓ Pass

Any Text WCAG AAA ✓ Pass

If you want to check with other color combinations, try the [Color Contrast Checker](#).

Android 4290553774 Background



This preview shows how black text looks on a background with the Android color 4290553774.



This preview shows how white text looks on a background with the Android color 4290553774.

Color Blindness Simulation

Color vision deficiency is a very complex topic, and I could not describe the different causes any better than Wikipedia does, so if you want to learn more, you should check out their [article about color blindness](#).


Dichromacy



Original Color
4290553774

Protanopia
4289637297

Deuteranopia
4290553774



Tritanopia
4290619059

Trichromacy



Original Color

4290553774

Protanomaly

4289964720

Deuteranomaly

4290553774

Tritanomaly

4290619057

Monochromacy



Original Color

4290553774

Achromatopsia

4289638062

Achromatomaly

4289964974

CSS Examples

Text

The CSS property to change the color of the text to Android 4290553774 is called "color". The color property can be set on classes, ids or directly on the HTML element.

This example shows how text in the color `rgb(188, 167, 174)` looks like.

```
.text, #text, p{  
    color:rgb(188, 167, 174)  
}
```

If you want to add a text shadow in that color use the text-shadow property, you can generate a text shadow directly with our [CSS Text Shadow Generator](#).

Here you see how black text with a 4 pixel rgb(188, 167, 174) colored shadow looks like.

```
.shadow{ text-shadow: 4px 4px 2px rgb(188, 167, 174) }
```

Border

The CSS property to change the border of an element to Android 4290553774 is called "border". The border property can be set on classes, ids or directly on the HTML element.

This example shows the color as border, it can be applied via the CSS property "border" or "border-color".

```
.border, #border, table{ border:4px solid rgb(188, 167, 174) }
```

If only the border color should be changed use the property `border-color`.

```
.border{ border-color:rgb(188, 167, 174) }
```

If you want to add a box shadow in that color use:

Here you see how a box with a 4 pixel `rgb(188, 167, 174)` colored shadow looks like.

```
.boxshadow{ -moz-box-shadow:4px 4px 4px  
4px rgb(188, 167, 174); -webkit-box-  
shadow:4px 4px 4px 4px rgb(188, 167, 174);  
box-shadow:4px 4px 4px 4px rgb(188, 167,  
174) }
```

Background

The CSS property to change the background color of an element to Android 4290553774 is called "background". The background property can be set on classes, ids or directly on the HTML element.

```
.background, #background, body{  
background: rgb(188, 167, 174) }
```

If only the background color should be changed can be used:

```
.background{ background-color: rgb(188,  
167, 174) }
```

This example shows the color as background, it is applied via the CSS property "background".

To optimize and compress your CSS code, you can use our [online CSS compressor and optimizer](#) based on csstidy. If you want to create a linear or radial gradient as background or border, check our [CSS Gradient Generator](#).

Hey! You found this booklet interesting? Support Converting Colors with the new Membership Option!

The pro membership hides all ads, plus gives you double the colors in the color bucket, and more awesome pro features!

[Learn more, Memberships starting at \\$2.50/m!](#)

**Follow me
on Twitter!**

@ConvertingColor