

Converting Colors

Android(4290611847)

Have a look what the booklet for
Android(4290611847) contains.

Android(4290611847)	3
<i>Conversions</i>	4
<i>Details</i>	6
<i>Harmonies</i>	11
<i>Previews</i>	23
<i>Color Blindness Simulation</i>	26
<i>CSS Examples</i>	29

Color

Android(4290611847)

Conversions

Conversions Part 1

Format	Color
Hex	BD8A87
RGB	189, 138, 135
RGB Percent	74%, 54%, 53%
CMY	0.2588, 0.4588, 0.4706
CMYK	0.00, 0.27, 0.29, 0.26
HSL	3°, 29%, 64%
HSV	3°, 29%, 74%
XYZ	34.4479, 30.7450, 27.0405
YIQ	152.9070, 31.3590, 9.8790

Conversions

Conversions Part 2

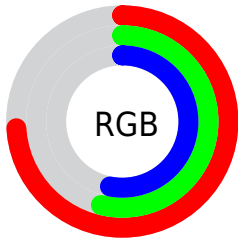
Format	Color
RYB	189, 138, 135
Decimal	12421767
CIELab	62.29, 19.02, 9.27
CIELCh	62, 21.163, 25.986
Yxy	30.7450, 0.3735, 0.3333
Android (android.graphics.Color)	4290611847 (0xFFBD8A87)
YUV	152.9070, -8.8282, 31.6536
Hunter-Lab	55.4482, 13.8611, 9.8998

Details

The Android color **4290611847** is a light color, and the websafe version is hex **CC9999**. A complement of this color would be **4287085245**, and the grayscale version is **4288256409**.

A 20% lighter version of the original color is **4294361276**, and **4286994517** is the 20% darker color. If you saturate the color by 10%, you get **4290607220**, and if you desaturate by 10%, it is **4290616474**.

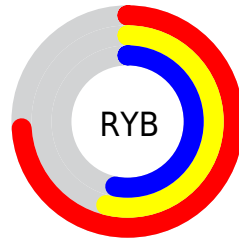
Distribution



Red (74%)

Green (54%)

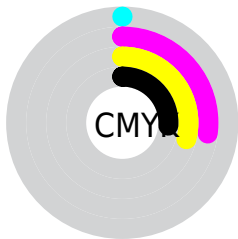
Blue (53%)



Red (74%)

Yellow (54%)

Blue (53%)

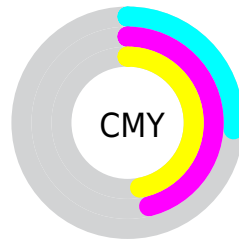


Cyan (0%)

Magenta (27%)

Yellow (29%)

Black (26%)



Cyan (26%)

Magenta (46%)

Yellow (47%)

Brightness & Saturation Gradients

These gradients show how the Android color 4290611847 changes by changing the brightness by 10 percent. The first figure shows a shift by +10% for each color and the second figure -10%.

Similar to the brightness gradients but the following saturation gradients show a change of the Android color 4290611847 by changing the saturation by 10% instead.

 4290611847

 4290611847

4294967295

 4288770158

 4294361276

 4286994517

 4294958296

 4285284414

 4294965492

 4283640104

 4281996308

 4280680448

 4278190080

 4290611847

 4290611847

 4290607220

 4290616474

 4290602593

 4290621101

 4290597966

 4290625728

 4290593595

 4290630099

 4290588968

 4290634726

 4290584342

 4290639352

 4290579715

 4290641919

 4290578944

Harmonies

Analogous

The Analogous color harmony consists of three colors that are next to each other on the color wheel.



4290415002



4290611847



4290154104

Triad

The Triadic color harmony groups three colors that are evenly spaced from another and form a triangle on the color wheel.



4290611847



4286488449



4286421436

Complementary

The Complementary color scheme is a pair of colors which are on the opposite of each other on the color wheel.



4290611847



4287085245

Split Complementary

Split-complementary colors differ from the complementary color scheme. The scheme consists of three colors, the original color and two neighbors of the complement color.



4285046453



4290611847



4285243795

Square

The Square scheme is like the rectangle color scheme, but the four colors are evenly spaced on the color wheel.



4290611847



4287863413



4284588454



4288058296

Rectangle

The Rectangle color scheme consists of four colors that form a rectangle on the color wheel.



4290611847



4289565299



4284588454



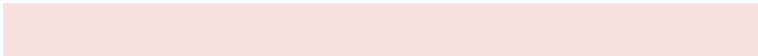
4285897658

Sweetspot

The Sweet Spot groups the original color and five complimentary colors.



4290611847



4294303967



4290611130



4286213741



4294638330



4286216826

Same Dimension

The Same Dimension uses a secret algorithm to generate beautiful new colors.



4290611847



4294289058



4290618759



4284372309



4288547072



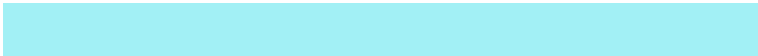
4280222208

Inverse Universe

The Inverse Universe completely reimagines the original color for something new.



4287085245



4288868597



4287078333



4283784798



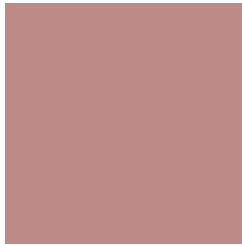
4278228382



4278197535

Previews

White Background



This preview shows how the Android color 4290611847 looks on a white background.

Color Contrast Check

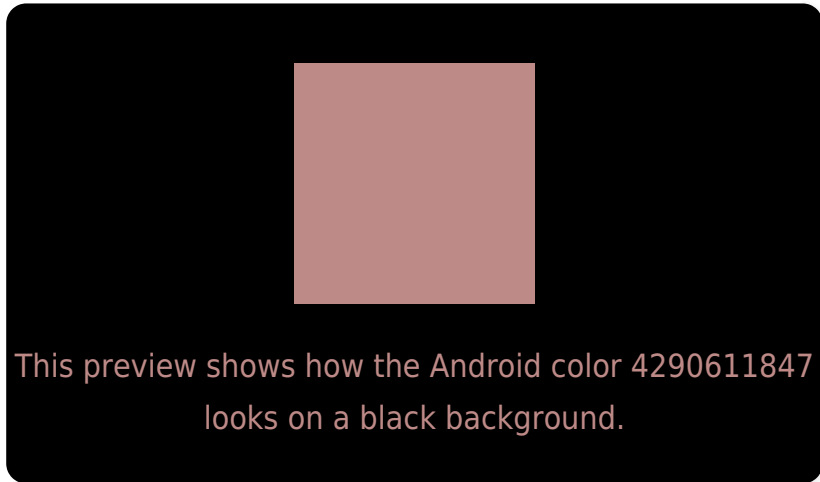
Large Text (above 18pt) WCAG AA × Fail

Any Text WCAG AA × Fail

Large Text (above 18pt) WCAG AAA × Fail

Any Text WCAG AAA × Fail

Black Background



Color Contrast Check

Large Text (above 18pt) WCAG AA ✓ Pass

Any Text WCAG AA ✓ Pass

Large Text (above 18pt) WCAG AAA ✓ Pass

Any Text WCAG AAA ✓ Pass

If you want to check with other color combinations, try the [Color Contrast Checker](#).

Android 4290611847 Background



This preview shows how black text looks on a background with the Android color 4290611847.



This preview shows how white text looks on a background with the Android color 4290611847.

Color Blindness Simulation

Color vision deficiency is a very complex topic, and I could not describe the different causes any better than Wikipedia does, so if you want to learn more, you should check out their [article about color blindness](#).

Dichromacy



Original Color
4290611847

Protanopia
4288452238

Deuteranopia
4289499526

Trichromacy



Original Color
4290611847

Protanomaly
4289237643

Deuteranomaly
4289891974

Tritanomaly
4290677135

Monochromacy



Original Color
4290611847

Achromatopsia
4288256409

Achromatomaly
4289107090

CSS Examples

Text

The CSS property to change the color of the text to Android 4290611847 is called "color". The color property can be set on classes, ids or directly on the HTML element.

This example shows how text in the color `rgb(189, 138, 135)` looks like.

```
.text, #text, p{  
    color:rgb(189, 138, 135)  
}
```

If you want to add a text shadow in that color use the text-shadow property, you can generate a text shadow directly with our [CSS Text Shadow Generator](#).

Here you see how black text with a 4 pixel rgb(189, 138, 135) colored shadow looks like.

```
.shadow{ text-shadow: 4px 4px 2px rgb(189, 138, 135) }
```

Border

The CSS property to change the border of an element to Android 4290611847 is called "border". The border property can be set on classes, ids or directly on the HTML element.

This example shows the color as border, it can be applied via the CSS property "border" or "border-color".

```
.border, #border, table{ border:4px solid rgb(189, 138, 135) }
```

If only the border color should be changed use the property `border-color`.

```
.border{ border-color:rgb(189, 138, 135) }
```

If you want to add a box shadow in that color use:

Here you see how a box with a 4 pixel `rgb(189, 138, 135)` colored shadow looks like.

```
.boxshadow{ -moz-box-shadow:4px 4px 4px  
4px rgb(189, 138, 135); -webkit-box-  
shadow:4px 4px 4px 4px rgb(189, 138, 135);  
box-shadow:4px 4px 4px 4px rgb(189, 138,  
135) }
```

Background

The CSS property to change the background color of an element to Android 4290611847 is called "background". The background property can be set on classes, ids or directly on the HTML element.

```
.background, #background, body{  
background: rgb(189, 138, 135) }
```

If only the background color should be changed can be used:

```
.background{ background-color: rgb(189,  
138, 135) }
```

This example shows the color as background, it is applied via the CSS property "background".

To optimize and compress your CSS code, you can use our [online CSS compressor and optimizer](#) based on csstidy. If you want to create a linear or radial gradient as background or border, check our [CSS Gradient Generator](#).

Hey! You found this booklet interesting? Support Converting Colors with the new Membership Option!

The pro membership hides all ads, plus gives you double the colors in the color bucket, and more awesome pro features!

[Learn more, Memberships starting at \\$2.50/m!](#)

**Follow me
on Twitter!**

@ConvertingColor