

# Converting Colors

Android(4290612365)

Have a look what the booklet for  
Android(4290612365) contains.

<b>Android(4290612365)</b> .....	3
<b><i>Conversions</i></b> .....	4
<b><i>Details</i></b> .....	6
<b><i>Harmonies</i></b> .....	11
<b><i>Previews</i></b> .....	23
<b><i>Color Blindness Simulation</i></b> .....	26
<b><i>CSS Examples</i></b> .....	29

# **Color**

**Android(4290612365)**

# Conversions

## Conversions Part 1

Format	Color
Hex	BD8C8D
RGB	189, 140, 141
RGB Percent	74%, 55%, 55%
CMY	0.2588, 0.4510, 0.4471
CMYK	0.00, 0.26, 0.25, 0.26
HSL	359°, 27%, 65%
HSV	359°, 26%, 74%
XYZ	35.1721, 31.4981, 29.4253
YIQ	154.7650, 28.8830, 10.6990

# Conversions

## Conversions Part 2

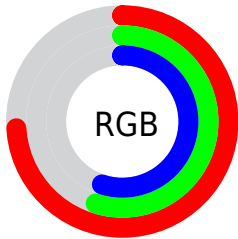
Format	Color
R <sub>Y</sub> B	189, 140, 141
Decimal	12422285
CIE Lab	62.93, 18.77, 6.77
CIE LCh	63, 19.956, 19.842
Yxy	31.4981, 0.3660, 0.3278
Android (android.graphics.Color)	4290612365 (0xFFBD8C8D)
YUV	154.7650, -6.7861, 30.0241
Hunter-Lab	56.1231, 13.6495, 8.2006

# Details

The Android color `4290612365` is a light color, and the websafe version is hex `CC9999`. A complement of this color would be `4287413692`, and the grayscale version is `4288387995`.

A 20% lighter version of the original color is `4294361795`, and `4287060571` is the 20% darker color. If you saturate the color by 10%, you get `4290607482`, and if you desaturate by 10%, it is `4290617248`.

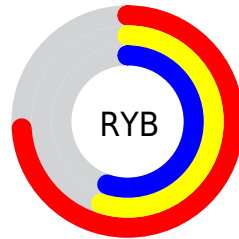
# Distribution



Red (74%)

Green (55%)

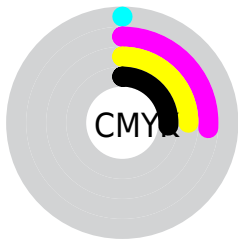
Blue (55%)



Red (74%)

Yellow (55%)

Blue (55%)

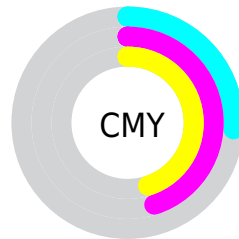


Cyan (0%)

Magenta (26%)

Yellow (25%)

Black (26%)



Cyan (26%)

Magenta (45%)

Yellow (45%)

# Brightness & Saturation Gradients

These gradients show how the Android color 4290612365 changes by changing the brightness by 10 percent. The first figure shows a shift by +10% for each color and the second figure -10%.

Similar to the brightness gradients but the following saturation gradients show a change of the Android color 4290612365 by changing the saturation by 10% instead.





4290612365



4290612365

4294967295



4288770675



4294361795



4287060571



4294958814



4285350468



4294966011



4283640621



4282062361



4280745984



4278190080



4290612365



4290612365



4290607482



4290617248

 4290602600

 4290622130

 4290597717

 4290627013

 4290592835

 4290631895

 4290588208

 4290636778

 4290583326

 4290641404

 4290578443

 4290641919

 4290576388

# Harmonies

## Analogous

The Analogous color harmony consists of three colors that are next to each other on the color wheel.



4290284703



4290612365



4290285438

# Triad

The Triadic color harmony groups three colors that are evenly spaced from another and form a triangle on the color wheel.



4290612365



4286947201



4286356667

# Complementary

The Complementary color scheme is a pair of colors which are on the opposite of each other on the color wheel.



4290612365



4287413692

# Split Complementary

Split-complementary colors differ from the complementary color scheme. The scheme consists of three colors, the original color and two neighbors of the complement color.



4285178035



4290612365



4285702801

# Square

The Square scheme is like the rectangle color scheme, but the four colors are evenly spaced on the color wheel.



4290612365



4288256887



4284981924



4287862457

# Rectangle

The Rectangle color scheme consists of four colors that form a rectangle on the color wheel.



4290612365



4289762167



4284981924



4285898169

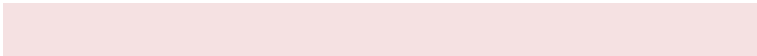


# Sweetspot

The Sweet Spot groups the original color and five complimentary colors.



4290612365



4294304226



4290481341



4286213742



4294638330



4286216826



# Same Dimension

The Same Dimension uses a secret algorithm to generate beautiful new colors.



4290612365



4294289834



4290618252



4284372309



4288544771



4280221697



# Inverse Universe

The Inverse Universe completely reimagines the original color for something new.



4290612365



4294289834



4287407805



4284372309



4288544771

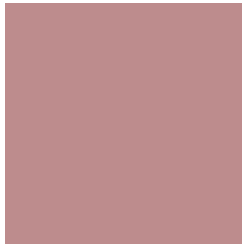


4280221697



# Previews

## White Background



This preview shows how the Android color 4290612365 looks on a white background.

## Color Contrast Check

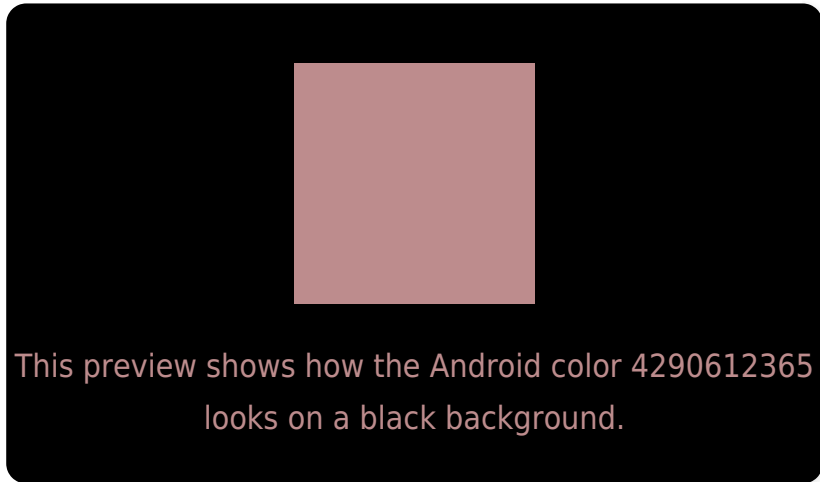
Large Text (above 18pt) WCAG AA × Fail

Any Text WCAG AA × Fail

Large Text (above 18pt) WCAG AAA × Fail

Any Text WCAG AAA × Fail

# Black Background



## Color Contrast Check

Large Text (above 18pt) WCAG AA ✓ Pass

Any Text WCAG AA ✓ Pass

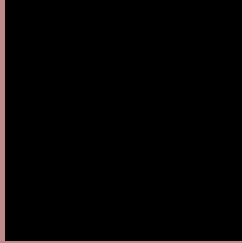
Large Text (above 18pt) WCAG AAA ✓ Pass

Any Text WCAG AAA ✓ Pass

If you want to check with other color combinations, try the [Color Contrast Checker](#).



# Android 4290612365 Background



This preview shows how black text looks on a background with the Android color 4290612365.



This preview shows how white text looks on a background with the Android color 4290612365.

# Color Blindness Simulation

Color vision deficiency is a very complex topic, and I could not describe the different causes any better than Wikipedia does, so if you want to learn more, you should check out their [article about color blindness](#).

## Dichromacy





**Tritanopia**  
4290677653

# Trichromacy



**Original Color**  
4290612365

**Protanomaly**  
4289238161

**Deuteranomaly**  
4289892492

**Tritanomaly**  
4290677650

# Monochromacy



**Original Color**  
4290612365

**Achromatopsia**  
4288387995

**Achromatomaly**  
4289173142

# CSS Examples

## Text

The CSS property to change the color of the text to Android 4290612365 is called "color". The color property can be set on classes, ids or directly on the HTML element.

This example shows how text in the color `rgb(189, 140, 141)` looks like.

```
.text, #text, p{  
    color:rgb(189, 140, 141)  
}
```

If you want to add a text shadow in that color use the text-shadow property, you can generate a text shadow directly with our [CSS Text Shadow Generator](#).

Here you see how black text with a 4 pixel rgb(189, 140, 141) colored shadow looks like.

```
.shadow{ text-shadow: 4px 4px 2px rgb(189, 140, 141) }
```

## Border

The CSS property to change the border of an element to Android 4290612365 is called "border". The border property can be set on classes, ids or directly on the HTML element.

This example shows the color as border, it can be applied via the CSS property "border" or "border-color".

```
.border, #border, table{ border:4px solid rgb(189, 140, 141) }
```

If only the border color should be changed use the property `border-color`.

```
.border{ border-color:rgb(189, 140, 141) }
```

If you want to add a box shadow in that color use:

Here you see how a box with a 4 pixel `rgb(189, 140, 141)` colored shadow looks like.

```
.boxshadow{ -moz-box-shadow:4px 4px 4px  
4px rgb(189, 140, 141); -webkit-box-  
shadow:4px 4px 4px 4px rgb(189, 140, 141);  
box-shadow:4px 4px 4px 4px rgb(189, 140,  
141) }
```

# Background

The CSS property to change the background color of an element to Android 4290612365 is called "background". The background property can be set on classes, ids or directly on the HTML element.

```
.background, #background, body{  
background: rgb(189, 140, 141) }
```

If only the background color should be changed can be used:

```
.background{ background-color: rgb(189,  
140, 141) }
```

This example shows the color as background, it is applied via the CSS property "background".

To optimize and compress your CSS code, you can use our [online CSS compressor and optimizer](#) based on csstidy. If you want to create a linear or radial gradient as background or border, check our [CSS Gradient Generator](#).



Hey! You found this booklet interesting? Support Converting Colors with the new Membership Option!

The pro membership hides all ads, plus gives you double the colors in the color bucket, and more awesome pro features!

**[Learn more, Memberships starting at \\$2.50/m!](#)**

**Follow me  
on Twitter!**

@ConvertingColor