

# Converting Colors

Android(4290618538)

Have a look what the booklet for  
Android(4290618538) contains.

<b>Android(4290618538)</b> .....	3
<i><b>Conversions</b></i> .....	4
<i><b>Details</b></i> .....	6
<i><b>Harmonies</b></i> .....	11
<i><b>Previews</b></i> .....	23
<i><b>Color Blindness Simulation</b></i> .....	26
<i><b>CSS Examples</b></i> .....	29

# **Color**

**Android(4290618538)**

# Conversions

## Conversions Part 1

Format	Color
Hex	BDA4AA
RGB	189, 164, 170
RGB Percent	74%, 64%, 67%
CMY	0.2588, 0.3569, 0.3333
CMYK	0.00, 0.13, 0.10, 0.26
HSL	346°, 16%, 69%
HSV	346°, 13%, 74%
XYZ	41.5174, 40.2720, 43.6153
YIQ	172.1590, 12.9740, 7.1660

# Conversions

## Conversions Part 2

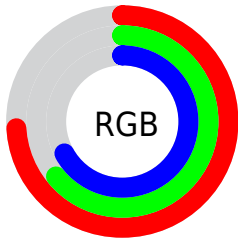
Format	Color
R <sub>YB</sub>	189, 164, 170
Decimal	12428458
CIE Lab	69.66, 10.14, 0.26
CIE LCh	70, 10.141, 1.488
Yxy	40.2720, 0.3311, 0.3211
Android (android.graphics.Color)	4290618538 (0xFFBDA4AA)
YUV	172.1590, -1.0644, 14.7696
Hunter-Lab	63.4602, 5.7242, 3.6730

# Details

The Android color `4290618538` is a light color, and the websafe version is hex `CC9999`. A complement of this color would be `4288986551`, and the grayscale version is `4289506476`.

A 20% lighter version of the original color is `4294302689`, and `4287131766` is the 20% darker color. If you saturate the color by 10%, you get `4290613660`, and if you desaturate by 10%, it is `4290623416`.

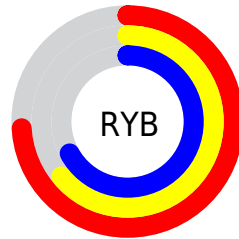
# Distribution



Red (74%)

Green (64%)

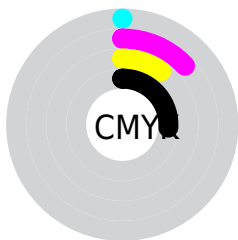
Blue (67%)



Red (74%)

Yellow (64%)

Blue (67%)

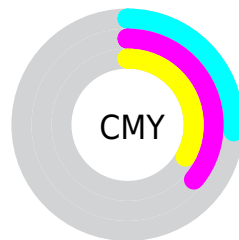


Cyan (0%)

Magenta (13%)

Yellow (10%)

Black (26%)



Cyan (26%)

Magenta (36%)

Yellow (33%)

# Brightness & Saturation Gradients

These gradients show how the Android color 4290618538 changes by changing the brightness by 10 percent. The first figure shows a shift by +10% for each color and the second figure -10%.

Similar to the brightness gradients but the following saturation gradients show a change of the Android color 4290618538 by changing the saturation by 10% instead.



 4290618538

 4290618538

4294967295

 4288842384

 4294302689

 4287131766

 4294965246

 4285421661

 4283777094

 4282264111

 4280817179

 4279500800

 4278190080

 4290618538

 4290618538

 4290613660

 4290623416

 4290608781

 4290628295

 4290603903

 4290633173

 4290599025

 4290638051

 4290594402

 4290641906

 4290589524

 4290641919

 4290584645

 4290579767

 4290576429

# Harmonies

## Analogous

The Analogous color harmony consists of three colors that are next to each other on the color wheel.



4290225587



4290618538



4290684321

# Triad

The Triadic color harmony groups three colors that are evenly spaced from another and form a triangle on the color wheel.



4290618538



4289179034



4288196282

# Complementary

The Complementary color scheme is a pair of colors which are on the opposite of each other on the color wheel.



4290618538



4288986551

# Split Complementary

Split-complementary colors differ from the complementary color scheme. The scheme consists of three colors, the original color and two neighbors of the complement color.



4287868851



4290618538



4288524193

# Square

The Square scheme is like the rectangle color scheme, but the four colors are evenly spaced on the color wheel.



4290618538



4289833624



4288000170



4288785340

# Rectangle

The Rectangle color scheme consists of four colors that form a rectangle on the color wheel.



4290618538



4290553500



4288000170



4288065208

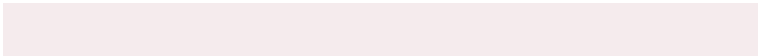


# Sweetspot

The Sweet Spot groups the original color and five complimentary colors.



4290618538



4294306797



4290225341



4286215286



4294638330



4286216826



# Same Dimension

The Same Dimension uses a secret algorithm to generate beautiful new colors.



4290618538



4294299351



4290620068



4284372311



4288544806



4280221703



# Inverse Universe

The Inverse Universe completely reimagines the original color for something new.



4290618538



4294299351



4288985021



4284372311



4288544806

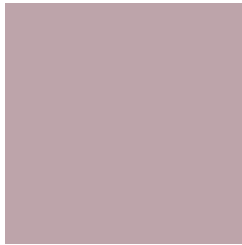


4280221703



# Previews

## White Background



This preview shows how the Android color 4290618538 looks on a white background.

## Color Contrast Check

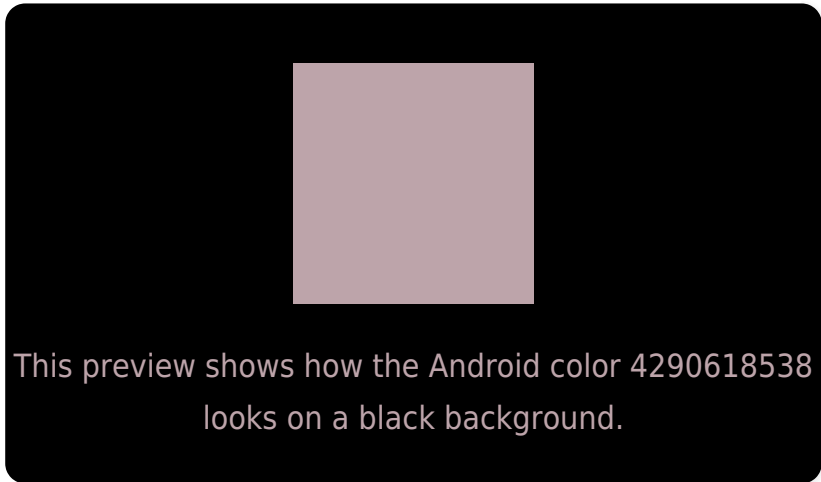
Large Text (above 18pt) WCAG AA × Fail

Any Text WCAG AA × Fail

Large Text (above 18pt) WCAG AAA × Fail

Any Text WCAG AAA × Fail

# Black Background



## Color Contrast Check

Large Text (above 18pt) WCAG AA ✓ Pass

Any Text WCAG AA ✓ Pass

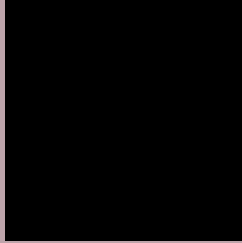
Large Text (above 18pt) WCAG AAA ✓ Pass

Any Text WCAG AAA ✓ Pass

If you want to check with other color combinations, try the [Color Contrast Checker](#).



# Android 4290618538 Background



This preview shows how black text looks on a background with the Android color 4290618538.



This preview shows how white text looks on a background with the Android color 4290618538.

# Color Blindness Simulation

Color vision deficiency is a very complex topic, and I could not describe the different causes any better than Wikipedia does, so if you want to learn more, you should check out their [article about color blindness](#).

## Dichromacy





# Trichromacy



**Original Color**  
4290618538

**Protanomaly**  
4289898412

**Deuteranomaly**  
4290553258

**Tritanomaly**  
4290683822

# Monochromacy



**Original Color**  
4290618538

**Achromatopsia**  
4289506476

**Achromatomaly**  
4289898923

# CSS Examples

## Text

The CSS property to change the color of the text to Android 4290618538 is called "color". The color property can be set on classes, ids or directly on the HTML element.

This example shows how text in the color `rgb(189, 164, 170)` looks like.

```
.text, #text, p{  
    color:rgb(189, 164, 170)  
}
```

If you want to add a text shadow in that color use the text-shadow property, you can generate a text shadow directly with our [CSS Text Shadow Generator](#).

Here you see how black text with a 4 pixel rgb(189, 164, 170) colored shadow looks like.

```
.shadow{ text-shadow: 4px 4px 2px rgb(189, 164, 170) }
```

## Border

The CSS property to change the border of an element to Android 4290618538 is called "border". The border property can be set on classes, ids or directly on the HTML element.

This example shows the color as border, it can be applied via the CSS property "border" or "border-color".

```
.border, #border, table{ border:4px solid rgb(189, 164, 170) }
```

If only the border color should be changed use the property `border-color`.

```
.border{ border-color:rgb(189, 164, 170) }
```

If you want to add a box shadow in that color use:

Here you see how a box with a 4 pixel `rgb(189, 164, 170)` colored shadow looks like.

```
.boxshadow{ -moz-box-shadow:4px 4px 4px  
4px rgb(189, 164, 170); -webkit-box-  
shadow:4px 4px 4px 4px rgb(189, 164, 170);  
box-shadow:4px 4px 4px 4px rgb(189, 164,  
170) }
```

# Background

The CSS property to change the background color of an element to Android 4290618538 is called "background". The background property can be set on classes, ids or directly on the HTML element.

```
.background, #background, body{  
background: rgb(189, 164, 170) }
```

If only the background color should be changed can be used:

```
.background{ background-color: rgb(189,  
164, 170) }
```

This example shows the color as background, it is applied via the CSS property "background".

To optimize and compress your CSS code, you can use our [online CSS compressor and optimizer](#) based on csstidy. If you want to create a linear or radial gradient as background or border, check our [CSS Gradient Generator](#).



Hey! You found this booklet interesting? Support Converting Colors with the new Membership Option!

The pro membership hides all ads, plus gives you double the colors in the color bucket, and more awesome pro features!

**[Learn more, Memberships starting at \\$2.50/m!](#)**

**Follow me  
on Twitter!**

@ConvertingColor