

# Converting Colors

Android(4290619308)

Have a look what the booklet for  
Android(4290619308) contains.

<b>Android(4290619308)</b> .....	3
<b><i>Conversions</i></b> .....	4
<b><i>Details</i></b> .....	6
<b><i>Harmonies</i></b> .....	11
<b><i>Previews</i></b> .....	23
<b><i>Color Blindness Simulation</i></b> .....	26
<b><i>CSS Examples</i></b> .....	29

# **Color**

**Android(4290619308)**

# Conversions

## Conversions Part 1

Format	Color
Hex	BDA7AC
RGB	189, 167, 172
RGB Percent	74%, 65%, 67%
CMY	0.2588, 0.3451, 0.3255
CMYK	0.00, 0.12, 0.09, 0.26
HSL	346°, 14%, 70%
HSV	346°, 12%, 74%
XYZ	42.2514, 41.4348, 44.8006
YIQ	174.1480, 11.5070, 6.2190

# Conversions

## Conversions Part 2

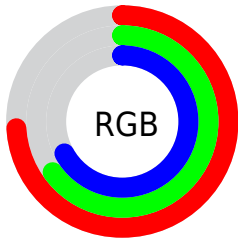
Format	Color
<a href="#">RYB</a>	<a href="#">189, 167, 172</a>
Decimal	<a href="#">12429228</a>
CIELab	<a href="#">70.48, 8.84, 0.35</a>
CIElCh	<a href="#">70, 8.847, 2.253</a>
Yxy	<a href="#">41.4348, 0.3288, 0.3225</a>
Android (android.graphics.Color)	<a href="#">4290619308</a> ( <a href="#">0xFFBDA7AC</a> )
YUV	<a href="#">174.1480, -1.0590, 13.0252</a>
Hunter-Lab	<a href="#">64.3699, 4.5173, 3.7939</a>

# Details

The Android color `4290619308` is a light color, and the websafe version is hex `999999`. A complement of this color would be `4289183160`, and the grayscale version is `4289638062`.

A 20% lighter version of the original color is `4294303459`, and `4287132536` is the 20% darker color. If you saturate the color by 10%, you get `4290614429`, and if you desaturate by 10%, it is `4290624187`.

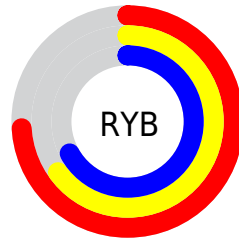
# Distribution



Red (74%)

Green (65%)

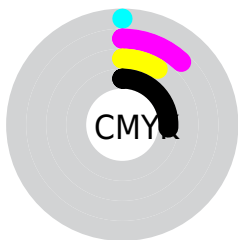
Blue (67%)



Red (74%)

Yellow (65%)

Blue (67%)

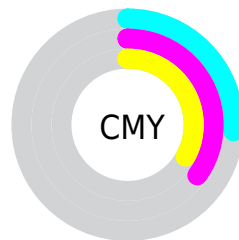


Cyan (0%)

Magenta (12%)

Yellow (9%)

Black (26%)



Cyan (26%)

Magenta (35%)

Yellow (33%)

# Brightness & Saturation Gradients

These gradients show how the Android color 4290619308 changes by changing the brightness by 10 percent. The first figure shows a shift by +10% for each color and the second figure -10%.

Similar to the brightness gradients but the following saturation gradients show a change of the Android color 4290619308 by changing the saturation by 10% instead.



 4290619308

 4290619308

4294967295

 4288843153

 4294303459

 4287132536

 4294966271

 4285422175

 4283843399

 4282264881

 4280817692

 4279566337

 4278190080

 4290619308

 4290619308

 4290614429

 4290624187

 4290609551

 4290629065

 4290604672

 4290633944

 4290599794

 4290638822

 4290594915

 4290641909

 4290590292

 4290641919

 4290585414

 4290580535

 4290576427

# Harmonies

## Analogous

The Analogous color harmony consists of three colors that are next to each other on the color wheel.



4290291892



4290619308



4290685092

# Triad

The Triadic color harmony groups three colors that are evenly spaced from another and form a triangle on the color wheel.



4290619308



4289310623



4288524218

# Complementary

The Complementary color scheme is a pair of colors which are on the opposite of each other on the color wheel.



4290619308



4289183160

# Split Complementary

Split-complementary colors differ from the complementary color scheme. The scheme consists of three colors, the original color and two neighbors of the complement color.



4288262581



4290619308



4288721061

# Square

The Square scheme is like the rectangle color scheme, but the four colors are evenly spaced on the color wheel.



4290619308



4289965212



4288328109



4289047996

# Rectangle

The Rectangle color scheme consists of four colors that form a rectangle on the color wheel.



4290619308



4290554272



4288328109



4288393401

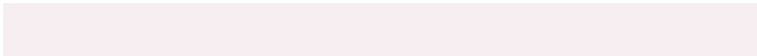


# Sweetspot

The Sweet Spot groups the original color and five complimentary colors.



4290619308



4294307311



4290291645



4286215799



4294638330



4286216826



# Same Dimension

The Same Dimension uses a secret algorithm to generate beautiful new colors.



4290619308



4294300634



4290620839



4284372311



4288544804



4280221703

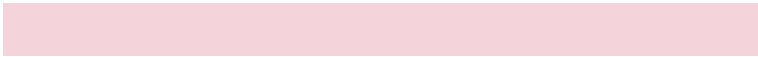


# Inverse Universe

The Inverse Universe completely reimagines the original color for something new.



4290619308



4294300634



4289181629



4284372311



4288544804

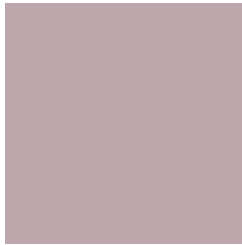


4280221703



# Previews

## White Background



This preview shows how the Android color 4290619308 looks on a white background.

## Color Contrast Check

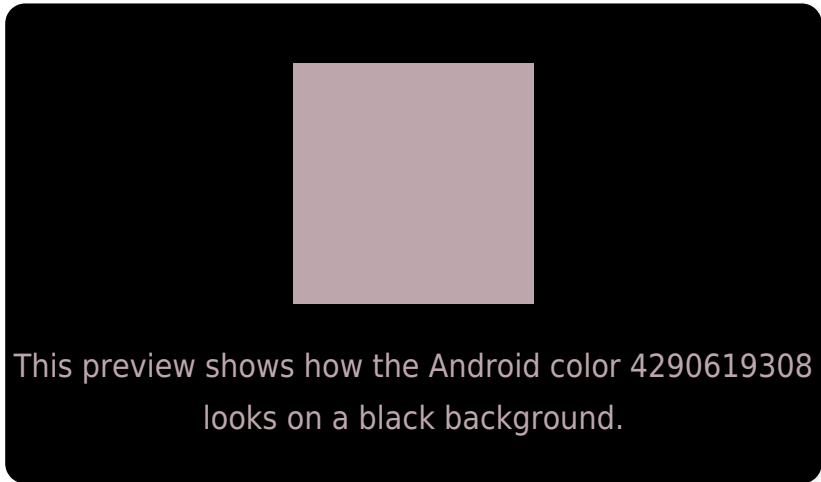
Large Text (above 18pt) WCAG AA × Fail

Any Text WCAG AA × Fail

Large Text (above 18pt) WCAG AAA × Fail

Any Text WCAG AAA × Fail

# Black Background



## Color Contrast Check

Large Text (above 18pt) WCAG AA ✓ Pass

Any Text WCAG AA ✓ Pass

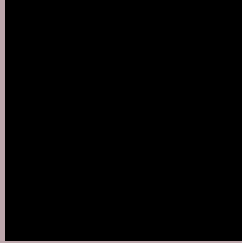
Large Text (above 18pt) WCAG AAA ✓ Pass

Any Text WCAG AAA ✓ Pass

If you want to check with other color combinations, try the [Color Contrast Checker](#).



# Android 4290619308 Background



This preview shows how black text looks on a background with the Android color 4290619308.




This preview shows how white text looks on a background with the Android color 4290619308.

# Color Blindness Simulation

Color vision deficiency is a very complex topic, and I could not describe the different causes any better than Wikipedia does, so if you want to learn more, you should check out their [article about color blindness](#).

## Dichromacy

	<b>Original Color</b> 4290619308
	<b>Protanopia</b> 4289703087
	<b>Deuteranopia</b> 4290619308



**Tritanopia**  
4290684595

# Trichromacy



**Original Color**  
4290619308

**Protanomaly**  
4290030254

**Deuteranomaly**  
4290619308

**Tritanomaly**  
4290684592

# Monochromacy



**Original Color**  
4290619308

**Achromatopsia**  
4289638062

**Achromatomaly**  
4289964973

# CSS Examples

## Text

The CSS property to change the color of the text to Android 4290619308 is called "color". The color property can be set on classes, ids or directly on the HTML element.

This example shows how text in the color `rgb(189, 167, 172)` looks like.

```
.text, #text, p{  
    color:rgb(189, 167, 172)  
}
```

If you want to add a text shadow in that color use the text-shadow property, you can generate a text shadow directly with our [CSS Text Shadow Generator](#).

Here you see how black text with a 4 pixel rgb(189, 167, 172) colored shadow looks like.

```
.shadow{ text-shadow: 4px 4px 2px rgb(189, 167, 172) }
```

## Border

The CSS property to change the border of an element to Android 4290619308 is called "border". The border property can be set on classes, ids or directly on the HTML element.

This example shows the color as border, it can be applied via the CSS property "border" or "border-color".

```
.border, #border, table{ border:4px solid rgb(189, 167, 172) }
```

If only the border color should be changed use the property `border-color`.

```
.border{ border-color:rgb(189, 167, 172) }
```

If you want to add a box shadow in that color use:

Here you see how a box with a 4 pixel `rgb(189, 167, 172)` colored shadow looks like.

```
.boxshadow{ -moz-box-shadow:4px 4px 4px  
4px rgb(189, 167, 172); -webkit-box-  
shadow:4px 4px 4px 4px rgb(189, 167, 172);  
box-shadow:4px 4px 4px 4px rgb(189, 167,  
172) }
```

# Background

The CSS property to change the background color of an element to Android 4290619308 is called "background". The background property can be set on classes, ids or directly on the HTML element.

```
.background, #background, body{  
background: rgb(189, 167, 172) }
```

If only the background color should be changed can be used:

```
.background{ background-color: rgb(189,  
167, 172) }
```

This example shows the color as background, it is applied via the CSS property "background".

To optimize and compress your CSS code, you can use our [online CSS compressor and optimizer](#) based on csstidy. If you want to create a linear or radial gradient as background or border, check our [CSS Gradient Generator](#).



Hey! You found this booklet interesting? Support Converting Colors with the new Membership Option!

The pro membership hides all ads, plus gives you double the colors in the color bucket, and more awesome pro features!

**[Learn more, Memberships starting at \\$2.50/m!](#)**

**Follow me  
on Twitter!**

@ConvertingColor