

Converting Colors

Android(4290619310)

Have a look what the booklet for
Android(4290619310) contains.

Android(4290619310)	3
<i>Conversions</i>	4
<i>Details</i>	6
<i>Harmonies</i>	11
<i>Previews</i>	23
<i>Color Blindness Simulation</i>	26
<i>CSS Examples</i>	29

Color

Android(4290619310)

Conversions

Conversions Part 1

Format	Color
Hex	BDA7AE
RGB	189, 167, 174
RGB Percent	74%, 65%, 68%
CMY	0.2588, 0.3451, 0.3176
CMYK	0.00, 0.12, 0.08, 0.26
HSL	341°, 14%, 70%
HSV	341°, 12%, 74%
XYZ	42.4450, 41.5122, 45.8200
YIQ	174.3760, 10.8650, 6.8410

Conversions

Conversions Part 2

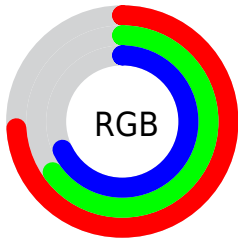
Format	Color
RYB	189, 167, 174
Decimal	12429230
CIELab	70.53, 9.19, -0.68
CIELCh	71, 9.215, 355.773
Yxy	41.5122, 0.3271, 0.3199
Android (android.graphics.Color)	4290619310 (0xFFBDA7AE)
YUV	174.3760, -0.1854, 12.8252
Hunter-Lab	64.4300, 4.8391, 2.9364

Details

The Android color `4290619310` is a light color, and the websafe version is hex `999999`. A complement of this color would be `4289183158`, and the grayscale version is `4289638062`.

A 20% lighter version of the original color is `4294303461`, and `4287132538` is the 20% darker color. If you saturate the color by 10%, you get `4290614433`, and if you desaturate by 10%, it is `4290624187`.

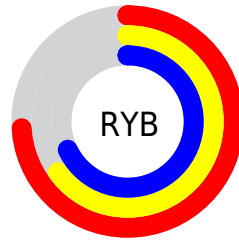
Distribution



Red (74%)

Green (65%)

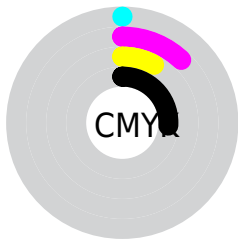
Blue (68%)



Red (74%)

Yellow (65%)

Blue (68%)

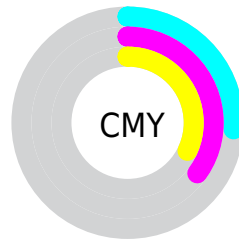


Cyan (0%)

Magenta (12%)

Yellow (8%)

Black (26%)



Cyan (26%)

Magenta (35%)

Yellow (32%)

Brightness & Saturation Gradients

These gradients show how the Android color 4290619310 changes by changing the brightness by 10 percent. The first figure shows a shift by +10% for each color and the second figure -10%.

Similar to the brightness gradients but the following saturation gradients show a change of the Android color 4290619310 by changing the saturation by 10% instead.

 4290619310

 4290619310

4294967295

 4288843155

 4294303461

 4287132538

 4294966271

 4285422177

 4283843401

 4282264883

 4280817694

 4279566340

 4278190080

 4290619310

 4290619310

 4290614433

 4290624187

 4290609556

 4290629064

 4290604679

 4290633941

 4290599802

 4290638818

 4290594926

 4290641902

 4290590305

 4290641915

 4290585428

 4290641919

 4290580551

 4290576444

Harmonies

Analogous

The Analogous color harmony consists of three colors that are next to each other on the color wheel.



4290226358



4290619310



4290750374

Triad

The Triadic color harmony groups three colors that are evenly spaced from another and form a triangle on the color wheel.



4290619310



4289506973



4288393402

Complementary

The Complementary color scheme is a pair of colors which are on the opposite of each other on the color wheel.



4290619310



4289183158

Split Complementary

Split-complementary colors differ from the complementary color scheme. The scheme consists of three colors, the original color and two neighbors of the complement color.



4288197043



4290619310



4288852131

Square

The Square scheme is like the rectangle color scheme, but the four colors are evenly spaced on the color wheel.



4290619310



4290096028



4288393899



4288917181

Rectangle

The Rectangle color scheme consists of four colors that form a rectangle on the color wheel.



4290619310



4290619553



4288393899



4288262584

Sweetspot

The Sweet Spot groups the original color and five complimentary colors.



4290619310



4294307312



4290160573



4286215799



4294638330



4286216826

Same Dimension

The Same Dimension uses a secret algorithm to generate beautiful new colors.



4290619310



4294300637



4290620327



4284372312



4288544818



4280221706

Inverse Universe

The Inverse Universe completely reimagines the original color for something new.



4290619310



4294300637



4289182141



4284372312



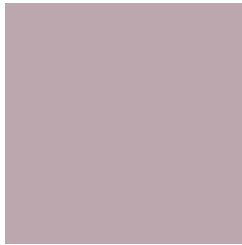
4288544818



4280221706

Previews

White Background



This preview shows how the Android color 4290619310 looks on a white background.

Color Contrast Check

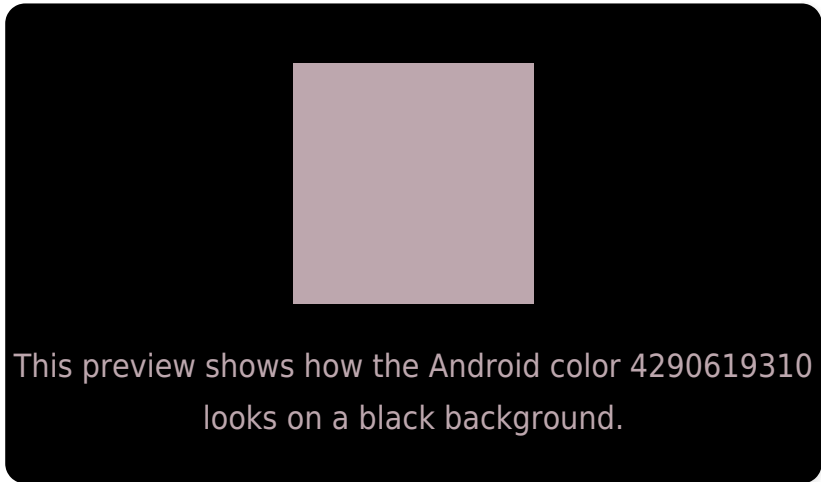
Large Text (above 18pt) WCAG AA × Fail

Any Text WCAG AA × Fail

Large Text (above 18pt) WCAG AAA × Fail

Any Text WCAG AAA × Fail

Black Background



Color Contrast Check

Large Text (above 18pt) WCAG AA ✓ Pass

Any Text WCAG AA ✓ Pass

Large Text (above 18pt) WCAG AAA ✓ Pass

Any Text WCAG AAA ✓ Pass

If you want to check with other color combinations, try the [Color Contrast Checker](#).

Android 4290619310 Background



This preview shows how black text looks on a background with the Android color 4290619310.



This preview shows how white text looks on a background with the Android color 4290619310.

Color Blindness Simulation

Color vision deficiency is a very complex topic, and I could not describe the different causes any better than Wikipedia does, so if you want to learn more, you should check out their [article about color blindness](#).


Dichromacy



Original Color
4290619310

Protanopia
4289637553

Deuteranopia
4290619310



Tritanopia
4290684595

Trichromacy



Original Color
4290619310

Protanomaly
4289964720

Deuteranomaly
4290619310

Tritanomaly
4290684593

Monochromacy



Original Color
4290619310

Achromatopsia
4289638062

Achromatomaly
4289964974

CSS Examples

Text

The CSS property to change the color of the text to Android 4290619310 is called "color". The color property can be set on classes, ids or directly on the HTML element.

This example shows how text in the color `rgb(189, 167, 174)` looks like.

```
.text, #text, p{  
    color:rgb(189, 167, 174)  
}
```

If you want to add a text shadow in that color use the text-shadow property, you can generate a text shadow directly with our [CSS Text Shadow Generator](#).

Here you see how black text with a 4 pixel rgb(189, 167, 174) colored shadow looks like.

```
.shadow{ text-shadow: 4px 4px 2px rgb(189, 167, 174) }
```

Border

The CSS property to change the border of an element to Android 4290619310 is called "border". The border property can be set on classes, ids or directly on the HTML element.

This example shows the color as border, it can be applied via the CSS property "border" or "border-color".

```
.border, #border, table{ border:4px solid rgb(189, 167, 174) }
```

If only the border color should be changed use the property `border-color`.

```
.border{ border-color:rgb(189, 167, 174) }
```

If you want to add a box shadow in that color use:

Here you see how a box with a 4 pixel `rgb(189, 167, 174)` colored shadow looks like.

```
.boxshadow{ -moz-box-shadow:4px 4px 4px  
4px rgb(189, 167, 174); -webkit-box-  
shadow:4px 4px 4px 4px rgb(189, 167, 174);  
box-shadow:4px 4px 4px 4px rgb(189, 167,  
174) }
```

Background

The CSS property to change the background color of an element to Android 4290619310 is called "background". The background property can be set on classes, ids or directly on the HTML element.

```
.background, #background, body{  
background: rgb(189, 167, 174) }
```

If only the background color should be changed can be used:

```
.background{ background-color: rgb(189,  
167, 174) }
```

This example shows the color as background, it is applied via the CSS property "background".

To optimize and compress your CSS code, you can use our [online CSS compressor and optimizer](#) based on csstidy. If you want to create a linear or radial gradient as background or border, check our [CSS Gradient Generator](#).

Hey! You found this booklet interesting? Support Converting Colors with the new Membership Option!

The pro membership hides all ads, plus gives you double the colors in the color bucket, and more awesome pro features!

[Learn more, Memberships starting at \\$2.50/m!](#)

**Follow me
on Twitter!**

@ConvertingColor