

Converting Colors

Android(4290619569)

Have a look what the booklet for
Android(4290619569) contains.

Android(4290619569)	3
<i>Conversions</i>	4
<i>Details</i>	6
<i>Harmonies</i>	11
<i>Previews</i>	23
<i>Color Blindness Simulation</i>	26
<i>CSS Examples</i>	29

Color

Android(4290619569)

Conversions

Conversions Part 1

Format	Color
Hex	BDA8B1
RGB	189, 168, 177
RGB Percent	74%, 66%, 69%
CMY	0.2588, 0.3412, 0.3059
CMYK	0.00, 0.11, 0.06, 0.26
HSL	334°, 14%, 70%
HSV	334°, 11%, 74%
XYZ	42.9247, 41.9984, 47.4391
YIQ	175.3050, 9.6270, 7.2510

Conversions

Conversions Part 2

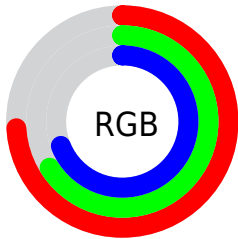
Format	Color
RYB	189, 168, 177
Decimal	12429489
CIELab	70.87, 9.17, -1.84
CIELCh	71, 9.357, 348.634
Yxy	41.9984, 0.3243, 0.3173
Android (android.graphics.Color)	4290619569 (0xFFBDA8B1)
YUV	175.3050, 0.8356, 12.0105
Hunter-Lab	64.8062, 4.8196, 1.9631

Details

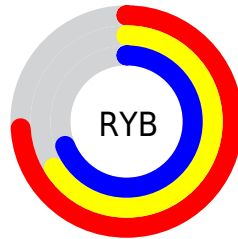
The Android color `4290619569` is a light color, and the websafe version is hex `999999`. A complement of this color would be `4289248692`, and the grayscale version is `4289703855`.

A 20% lighter version of the original color is `4294303721`, and `4287132796` is the 20% darker color. If you saturate the color by 10%, you get `4290614694`, and if you desaturate by 10%, it is `4290624444`.

Distribution



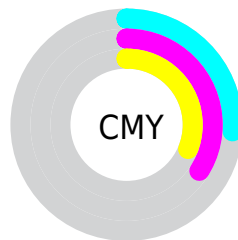
- Red (74%)
- Green (66%)
- Blue (69%)



- Red (74%)
- Yellow (66%)
- Blue (69%)



- Cyan (0%)
- Magenta (11%)
- Yellow (6%)
- Black (26%)



- Cyan (26%)
- Magenta (34%)
- Yellow (31%)

Brightness & Saturation Gradients

These gradients show how the Android color 4290619569 changes by changing the brightness by 10 percent. The first figure shows a shift by +10% for each color and the second figure -10%.

Similar to the brightness gradients but the following saturation gradients show a change of the Android color 4290619569 by changing the saturation by 10% instead.

 4290619569

 4290619569

4294967295

 4288843414

 4294303721

 4287132796

 4294966527

 4285422436

 4283843660

 4282265141

 4280817952

 4279566344

 4278190080

 4290619569

 4290619569

 4290614694

 4290624444

 4290609819

 4290629319

 4290604945

 4290634193

 4290600070

 4290639068

 4290595451

 4290641895

 4290590576

 4290641906

 4290585701

 4290641917

 4290580827

 4290641919

 4290576465

Harmonies

Analogous

The Analogous color harmony consists of three colors that are next to each other on the color wheel.



4290095801



4290619569



4290816168

Triad

The Triadic color harmony groups three colors that are evenly spaced from another and form a triangle on the color wheel.



4290619569



4289703837



4288328122

Complementary

The Complementary color scheme is a pair of colors which are on the opposite of each other on the color wheel.



4290619569



4289248692

Split Complementary

Split-complementary colors differ from the complementary color scheme. The scheme consists of three colors, the original color and two neighbors of the complement color.



4288263090



4290619569



4289048994

Square

The Square scheme is like the rectangle color scheme, but the four colors are evenly spaced on the color wheel.



4290619569



4290292893



4288524970



4288786366

Rectangle

The Rectangle color scheme consists of four colors that form a rectangle on the color wheel.



4290619569



4290750883



4288524970



4288262840

Sweetspot

The Sweet Spot groups the original color and five complimentary colors.



4290619569



4294307313



4290029757



4286215800



4294638330



4286216826

Same Dimension

The Same Dimension uses a secret algorithm to generate beautiful new colors.



4290619569



4294301155



4290619816



4284372313



4288544836



4280221709

Inverse Universe

The Inverse Universe completely reimagines the original color for something new.



4290619569



4294301155



4289248445



4284372313



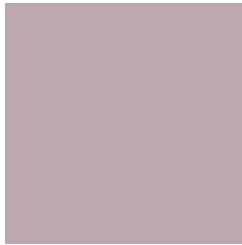
4288544836



4280221709

Previews

White Background



This preview shows how the Android color 4290619569 looks on a white background.

Color Contrast Check

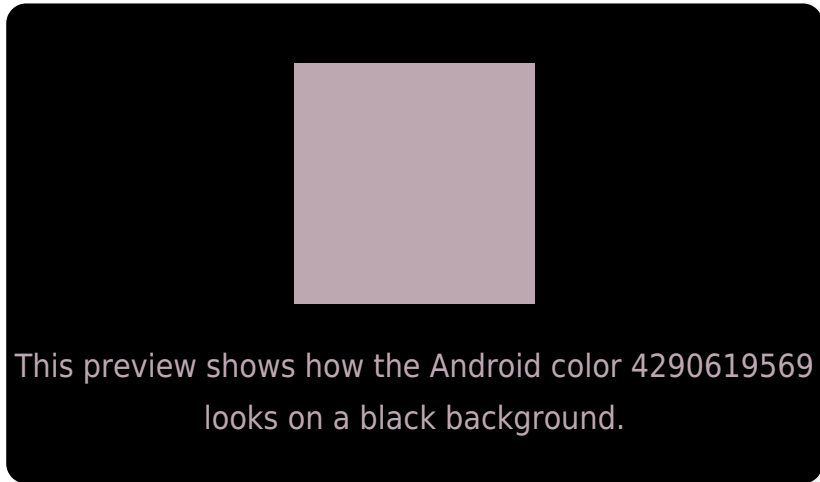
Large Text (above 18pt) WCAG AA × Fail

Any Text WCAG AA × Fail

Large Text (above 18pt) WCAG AAA × Fail

Any Text WCAG AAA × Fail

Black Background



Color Contrast Check

Large Text (above 18pt) WCAG AA ✓ Pass

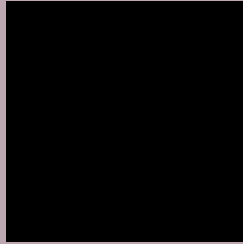
Any Text WCAG AA ✓ Pass

Large Text (above 18pt) WCAG AAA ✓ Pass

Any Text WCAG AAA ✓ Pass

If you want to check with other color combinations, try the [Color Contrast Checker](#).

Android 4290619569 Background



This preview shows how black text looks on a background with the Android color 4290619569.




This preview shows how white text looks on a background with the Android color 4290619569.

Color Blindness Simulation

Color vision deficiency is a very complex topic, and I could not describe the different causes any better than Wikipedia does, so if you want to learn more, you should check out their [article about color blindness](#).

Dichromacy

	Original Color 4290619569
	Protanopia 4289703348
	Deuteranopia 4290619569



Tritanopia
4290619317

Trichromacy



Original Color
4290619569

Protanomaly
4290030515

Deuteranomaly
4290619569

Tritanomaly
4290619316

Monochromacy



Original Color
4290619569

Achromatopsia
4289703855

Achromatomaly
4290030768

CSS Examples

Text

The CSS property to change the color of the text to Android 4290619569 is called "color". The color property can be set on classes, ids or directly on the HTML element.

This example shows how text in the color `rgb(189, 168, 177)` looks like.

```
.text, #text, p{  
    color:rgb(189, 168, 177)  
}
```

If you want to add a text shadow in that color use the text-shadow property, you can generate a text shadow directly with our [CSS Text Shadow Generator](#).

Here you see how black text with a 4 pixel rgb(189, 168, 177) colored shadow looks like.

```
.shadow{ text-shadow: 4px 4px 2px rgb(189, 168, 177) }
```

Border

The CSS property to change the border of an element to Android 4290619569 is called "border". The border property can be set on classes, ids or directly on the HTML element.

This example shows the color as border, it can be applied via the CSS property "border" or "border-color".

```
.border, #border, table{ border:4px solid rgb(189, 168, 177) }
```

If only the border color should be changed use the property `border-color`.

```
.border{ border-color:rgb(189, 168, 177) }
```

If you want to add a box shadow in that color use:

Here you see how a box with a 4 pixel `rgb(189, 168, 177)` colored shadow looks like.

```
.boxshadow{ -moz-box-shadow:4px 4px 4px 4px rgb(189, 168, 177); -webkit-box-shadow:4px 4px 4px 4px rgb(189, 168, 177); box-shadow:4px 4px 4px 4px rgb(189, 168, 177) }
```

Background

The CSS property to change the background color of an element to Android 4290619569 is called "background". The background property can be set on classes, ids or directly on the HTML element.

```
.background, #background, body{  
background: rgb(189, 168, 177) }
```

If only the background color should be changed can be used:

```
.background{ background-color: rgb(189,  
168, 177) }
```

This example shows the color as background, it is applied via the CSS property "background".

To optimize and compress your CSS code, you can use our [online CSS compressor and optimizer](#) based on csstidy. If you want to create a linear or radial gradient as background or border, check our [CSS Gradient Generator](#).

Hey! You found this booklet interesting? Support Converting Colors with the new Membership Option!

The pro membership hides all ads, plus gives you double the colors in the color bucket, and more awesome pro features!

[Learn more, Memberships starting at \\$2.50/m!](#)

**Follow me
on Twitter!**

@ConvertingColor