

Converting Colors

Android(4290620080)

Have a look what the booklet for
Android(4290620080) contains.

Android(4290620080)	3
<i>Conversions</i>	4
<i>Details</i>	6
<i>Harmonies</i>	11
<i>Previews</i>	23
<i>Color Blindness Simulation</i>	26
<i>CSS Examples</i>	29

Color

Android(4290620080)

Conversions

Conversions Part 1

Format	Color
Hex	BDAAB0
RGB	189, 170, 176
RGB Percent	74%, 67%, 69%
CMY	0.2588, 0.3333, 0.3098
CMYK	0.00, 0.10, 0.07, 0.26
HSL	341°, 13%, 70%
HSV	341°, 10%, 74%
XYZ	43.1975, 42.7029, 47.0400
YIQ	176.3650, 9.3980, 5.8940

Conversions

Conversions Part 2

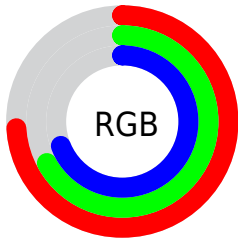
Format	Color
RYB	189, 170, 176
Decimal	12430000
CIELab	71.35, 7.90, -0.58
CIElCh	71, 7.924, 355.767
Yxy	42.7029, 0.3249, 0.3212
Android (android.graphics.Color)	4290620080 (0xFFBDAAB0)
YUV	176.3650, -0.1799, 11.0809
Hunter-Lab	65.3474, 3.6382, 3.0636

Details

The Android color `4290620080` is a light color, and the websafe version is hex `999999`. A complement of this color would be `4289379767`, and the grayscale version is `4289769648`.

A 20% lighter version of the original color is `4294304232`, and `4287133308` is the 20% darker color. If you saturate the color by 10%, you get `4290615203`, and if you desaturate by 10%, it is `4290624957`.

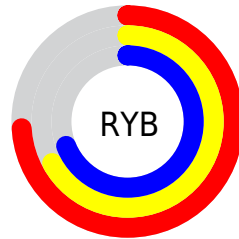
Distribution



Red (74%)

Green (67%)

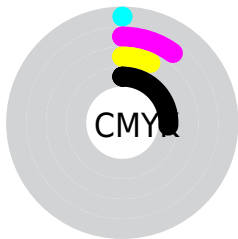
Blue (69%)



Red (74%)

Yellow (67%)

Blue (69%)

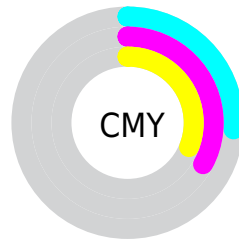


Cyan (0%)

Magenta (10%)

Yellow (7%)

Black (26%)



Cyan (26%)

Magenta (33%)

Yellow (31%)

Brightness & Saturation Gradients

These gradients show how the Android color 4290620080 changes by changing the brightness by 10 percent. The first figure shows a shift by +10% for each color and the second figure -10%.

Similar to the brightness gradients but the following saturation gradients show a change of the Android color 4290620080 by changing the saturation by 10% instead.

 4290620080

 4290620080

4294967295

 4288843925

 4294304232

 4287133308

4294967039

 4285422947

 4283844171

 4282265396

 4280818207

 4279566343

 4278190080

 4290620080

 4290620080

 4290615203

 4290624957

 4290610326

 4290629834

 4290605449

 4290634711

 4290600572

 4290639588

 4290595695

 4290641905

 4290591074

 4290641918

 4290586197

 4290641919

 4290581321

 4290576444

Harmonies

Analogous

The Analogous color harmony consists of three colors that are next to each other on the color wheel.



4290227127



4290620080



4290751145

Triad

The Triadic color harmony groups three colors that are evenly spaced from another and form a triangle on the color wheel.



4290620080



4289638562



4288721594

Complementary

The Complementary color scheme is a pair of colors which are on the opposite of each other on the color wheel.



4290620080



4289379767

Split Complementary

Split-complementary colors differ from the complementary color scheme. The scheme consists of three colors, the original color and two neighbors of the complement color.



4288525237



4290620080



4289114790

Square

The Square scheme is like the rectangle color scheme, but the four colors are evenly spaced on the color wheel.



4290620080



4290162336



4288656301



4289114301

Rectangle

The Rectangle color scheme consists of four colors that form a rectangle on the color wheel.



4290620080



4290620325



4288656301



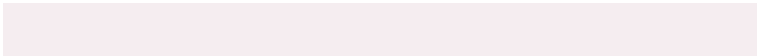
4288590521

Sweetspot

The Sweet Spot groups the original color and five complimentary colors.



4290620080



4294307312



4290226877



4286215799



4294638330



4286216826

Same Dimension

The Same Dimension uses a secret algorithm to generate beautiful new colors.



4290620080



4294301665



4290620842



4284372312



4288544818



4280221706

Inverse Universe

The Inverse Universe completely reimagines the original color for something new.



4290620080



4294301665



4289379005



4284372312



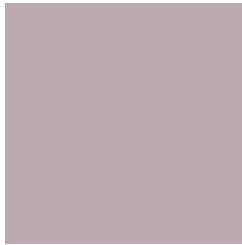
4288544818



4280221706

Previews

White Background



This preview shows how the Android color 4290620080 looks on a white background.

Color Contrast Check

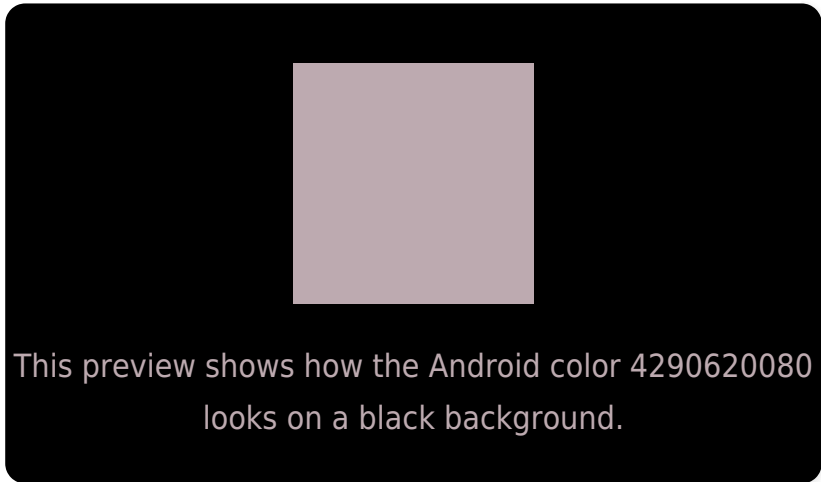
Large Text (above 18pt) WCAG AA × Fail

Any Text WCAG AA × Fail

Large Text (above 18pt) WCAG AAA × Fail

Any Text WCAG AAA × Fail

Black Background



Color Contrast Check

Large Text (above 18pt) WCAG AA ✓ Pass

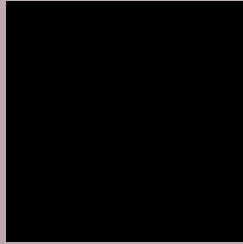
Any Text WCAG AA ✓ Pass

Large Text (above 18pt) WCAG AAA ✓ Pass

Any Text WCAG AAA ✓ Pass

If you want to check with other color combinations, try the [Color Contrast Checker](#).

Android 4290620080 Background



This preview shows how black text looks on a background with the Android color 4290620080.



This preview shows how white text looks on a background with the Android color 4290620080.

Color Blindness Simulation

Color vision deficiency is a very complex topic, and I could not describe the different causes any better than Wikipedia does, so if you want to learn more, you should check out their [article about color blindness](#).


Dichromacy



Original Color
4290620080

Protanopia
4289834674

Deuteranopia
4290750896



Tritanopia
4290685366

Trichromacy



Original Color

4290620080

Protanomaly

4290096561

Deuteranomaly

4290685360

Tritanomaly

4290685364

Monochromacy



Original Color

4290620080

Achromatopsia

4289769648

Achromatomaly

4290096816

CSS Examples

Text

The CSS property to change the color of the text to Android 4290620080 is called "color". The color property can be set on classes, ids or directly on the HTML element.

This example shows how text in the color `rgb(189, 170, 176)` looks like.

```
.text, #text, p{  
    color:rgb(189, 170, 176)  
}
```

If you want to add a text shadow in that color use the text-shadow property, you can generate a text shadow directly with our [CSS Text Shadow Generator](#).

Here you see how black text with a 4 pixel rgb(189, 170, 176) colored shadow looks like.

```
.shadow{ text-shadow: 4px 4px 2px rgb(189, 170, 176) }
```

Border

The CSS property to change the border of an element to Android 4290620080 is called "border". The border property can be set on classes, ids or directly on the HTML element.

This example shows the color as border, it can be applied via the CSS property "border" or "border-color".

```
.border, #border, table{ border:4px solid rgb(189, 170, 176) }
```

If only the border color should be changed use the property `border-color`.

```
.border{ border-color:rgb(189, 170, 176) }
```

If you want to add a box shadow in that color use:

Here you see how a box with a 4 pixel `rgb(189, 170, 176)` colored shadow looks like.

```
.boxshadow{ -moz-box-shadow:4px 4px 4px  
4px rgb(189, 170, 176); -webkit-box-  
shadow:4px 4px 4px 4px rgb(189, 170, 176);  
box-shadow:4px 4px 4px 4px rgb(189, 170,  
176) }
```

Background

The CSS property to change the background color of an element to Android 4290620080 is called "background". The background property can be set on classes, ids or directly on the HTML element.

```
.background, #background, body{  
background: rgb(189, 170, 176) }
```

If only the background color should be changed can be used:

```
.background{ background-color: rgb(189,  
170, 176) }
```

This example shows the color as background, it is applied via the CSS property "background".

To optimize and compress your CSS code, you can use our [online CSS compressor and optimizer](#) based on csstidy. If you want to create a linear or radial gradient as background or border, check our [CSS Gradient Generator](#).

Hey! You found this booklet interesting? Support Converting Colors with the new Membership Option!

The pro membership hides all ads, plus gives you double the colors in the color bucket, and more awesome pro features!

[Learn more, Memberships starting at \\$2.50/m!](#)

**Follow me
on Twitter!**

@ConvertingColor