

# Converting Colors

Android(4290681746)

Have a look what the booklet for  
Android(4290681746) contains.

<b>Android(4290681746)</b> .....	3
<b><i>Conversions</i></b> .....	4
<b><i>Details</i></b> .....	6
<b><i>Harmonies</i></b> .....	11
<b><i>Previews</i></b> .....	23
<b><i>Color Blindness Simulation</i></b> .....	26
<b><i>CSS Examples</i></b> .....	29

# **Color**

**Android(4290681746)**

# Conversions

## Conversions Part 1

Format	Color
Hex	BE9B92
RGB	190, 155, 146
RGB Percent	75%, 61%, 57%
CMY	0.2549, 0.3922, 0.4275
CMYK	0.00, 0.18, 0.23, 0.25
HSL	12°, 25%, 66%
HSV	12°, 23%, 75%
XYZ	38.1449, 36.4652, 32.2222
YIQ	164.4390, 23.7490, 4.6210

# Conversions

## Conversions Part 2

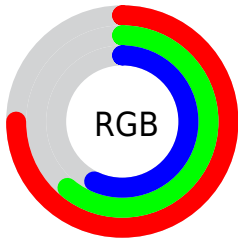
Format	Color
<a href="#">RYB</a>	<a href="#">190, 157, 146</a>
Decimal	<a href="#">12491666</a>
CIELab	<a href="#">66.87, 11.60, 9.61</a>
CIELCh	<a href="#">67, 15.058, 39.643</a>
Yxy	<a href="#">36.4652, 0.3571, 0.3413</a>
Android (android.graphics.Color)	<a href="#">4290681746</a> ( <a href="#">0xFFBE9B92</a> )
YUV	<a href="#">164.4390, -9.0904, 22.4170</a>
Hunter-Lab	<a href="#">60.3864, 7.0786, 10.6333</a>

# Details

The Android color `4290681746` is a light color, and the websafe version is hex `CC9999`. A complement of this color would be `4287804862`, and the grayscale version is `4289045925`.

A 20% lighter version of the original color is `4294431176`, and `4287129696` is the 20% darker color. If you saturate the color by 10%, you get `4290677887`, and if you desaturate by 10%, it is `4290685605`.

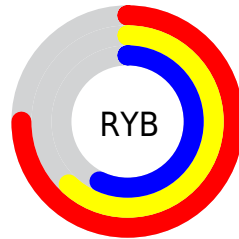
# Distribution



Red (75%)

Green (61%)

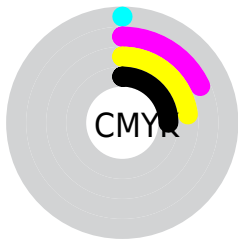
Blue (57%)



Red (75%)

Yellow (62%)

Blue (57%)

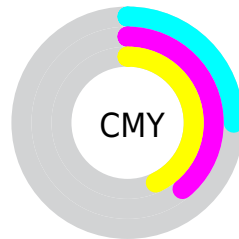


Cyan (0%)

Magenta (18%)

Yellow (23%)

Black (25%)



Cyan (25%)

Magenta (39%)

Yellow (43%)

# Brightness & Saturation Gradients

These gradients show how the Android color 4290681746 changes by changing the brightness by 10 percent. The first figure shows a shift by +10% for each color and the second figure -10%.

Similar to the brightness gradients but the following saturation gradients show a change of the Android color 4290681746 by changing the saturation by 10% instead.



 4290681746

 4290681746

4294967295

 4288905592

 4294431176

 4287129696

 4294962916

 4285419592

 4283775281

 4282196764

 4280749570

 4278190080

 4290681746

 4290681746

 4290677887

 4290685605

 4290674028

 4290689464

 4290670169

 4290693323

 4290666310

 4290697182

 4290662195

 4290701297

 4290658336

 4290705151

 4290654477

 4290707455

 4290651904

# Harmonies

## Analogous

The Analogous color harmony consists of three colors that are next to each other on the color wheel.



4290746783



4290681746



4290158474

# Triad

The Triadic color harmony groups three colors that are evenly spaced from another and form a triangle on the color wheel.



4290681746



4287343257



4288258749

# Complementary

The Complementary color scheme is a pair of colors which are on the opposite of each other on the color wheel.



4290681746



4287804862

# Split Complementary

Split-complementary colors differ from the complementary color scheme. The scheme consists of three colors, the original color and two neighbors of the complement color.



4287211452



4290681746



4286688167

# Square

The Square scheme is like the rectangle color scheme, but the four colors are evenly spaced on the color wheel.



4290681746



4288259982



4286622387



4289437368

# Rectangle

The Rectangle color scheme consists of four colors that form a rectangle on the color wheel.



4290681746



4289634952



4286622387



4287931581

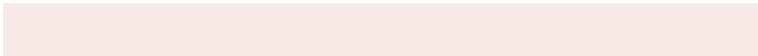


# Sweetspot

The Sweet Spot groups the original color and five complimentary colors.



4290681746



4294437606



4290679477



4286412147



4294769916



4286414205



# Same Dimension

The Same Dimension uses a secret algorithm to generate beautiful new colors.



4290681746



4294426802



4290687378



4284372821



4288552960



4280223232

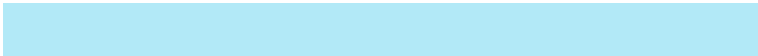


# Inverse Universe

The Inverse Universe completely reimagines the original color for something new.



4287804862



4289915383



4287799230



4283784286



4278222494

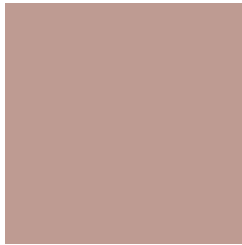


4278196255



# Previews

## White Background



This preview shows how the Android color 4290681746 looks on a white background.

## Color Contrast Check

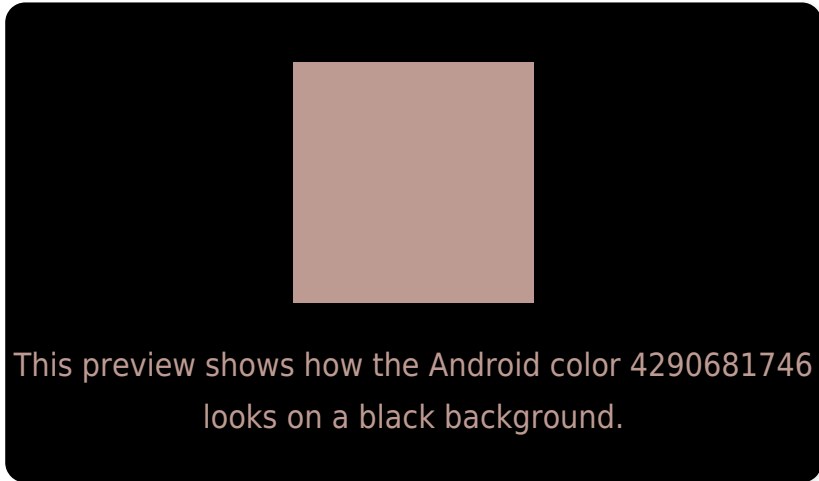
Large Text (above 18pt) WCAG AA × Fail

Any Text WCAG AA × Fail

Large Text (above 18pt) WCAG AAA × Fail

Any Text WCAG AAA × Fail

# Black Background



## Color Contrast Check

Large Text (above 18pt) WCAG AA ✓ Pass

Any Text WCAG AA ✓ Pass

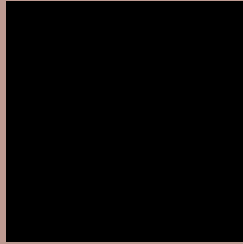
Large Text (above 18pt) WCAG AAA ✓ Pass

Any Text WCAG AAA ✓ Pass

If you want to check with other color combinations, try the [Color Contrast Checker](#).



# Android 4290681746 Background



This preview shows how black text looks on a background with the Android color 4290681746.



This preview shows how white text looks on a background with the Android color 4290681746.

# Color Blindness Simulation

Color vision deficiency is a very complex topic, and I could not describe the different causes any better than Wikipedia does, so if you want to learn more, you should check out their [article about color blindness](#).


## Dichromacy



**Original Color**  
4290681746

**Protanopia**  
4289307286

**Deuteranopia**  
4290354578



**Tritanopia**  
4290812068

# Trichromacy



**Original Color**  
4290681746

**Protanomaly**  
4289830805

**Deuteranomaly**  
4290485394

**Tritanomaly**  
4290746781

# Monochromacy



**Original Color**  
4290681746

**Achromatopsia**  
4288980132

**Achromatomaly**  
4289569181

# CSS Examples

## Text

The CSS property to change the color of the text to Android 4290681746 is called "color". The color property can be set on classes, ids or directly on the HTML element.

This example shows how text in the color `rgb(190, 155, 146)` looks like.

```
.text, #text, p{  
    color:rgb(190, 155, 146)  
}
```

If you want to add a text shadow in that color use the text-shadow property, you can generate a text shadow directly with our [CSS Text Shadow Generator](#).

Here you see how black text with a 4 pixel rgb(190, 155, 146) colored shadow looks like.

```
.shadow{ text-shadow: 4px 4px 2px rgb(190, 155, 146) }
```

## Border

The CSS property to change the border of an element to Android 4290681746 is called "border". The border property can be set on classes, ids or directly on the HTML element.

This example shows the color as border, it can be applied via the CSS property "border" or "border-color".

```
.border, #border, table{ border:4px solid rgb(190, 155, 146) }
```

If only the border color should be changed use the property `border-color`.

```
.border{ border-color:rgb(190, 155, 146) }
```

If you want to add a box shadow in that color use:

Here you see how a box with a 4 pixel `rgb(190, 155, 146)` colored shadow looks like.

```
.boxshadow{ -moz-box-shadow:4px 4px 4px 4px rgb(190, 155, 146); -webkit-box-shadow:4px 4px 4px 4px rgb(190, 155, 146); box-shadow:4px 4px 4px 4px rgb(190, 155, 146) }
```

# Background

The CSS property to change the background color of an element to Android 4290681746 is called "background". The background property can be set on classes, ids or directly on the HTML element.

```
.background, #background, body{  
background: rgb(190, 155, 146) }
```

If only the background color should be changed can be used:

```
.background{ background-color: rgb(190,  
155, 146) }
```

This example shows the color as background, it is applied via the CSS property "background".

To optimize and compress your CSS code, you can use our [online CSS compressor and optimizer](#) based on csstidy. If you want to create a linear or radial gradient as background or border, check our [CSS Gradient Generator](#).



Hey! You found this booklet interesting? Support Converting Colors with the new Membership Option!

The pro membership hides all ads, plus gives you double the colors in the color bucket, and more awesome pro features!

**[Learn more, Memberships starting at \\$2.50/m!](#)**

**Follow me  
on Twitter!**

@ConvertingColor