

Converting Colors

Android(4290682530)

Have a look what the booklet for
Android(4290682530) contains.

Android(4290682530)	3
<i>Conversions</i>	4
<i>Details</i>	6
<i>Harmonies</i>	11
<i>Previews</i>	23
<i>Color Blindness Simulation</i>	26
<i>CSS Examples</i>	29

Color

Android(4290682530)

Conversions

Conversions Part 1

Format	Color
Hex	BE9EA2
RGB	190, 158, 162
RGB Percent	75%, 62%, 64%
CMY	0.2549, 0.3804, 0.3647
CMYK	0.00, 0.17, 0.15, 0.25
HSL	352°, 20%, 68%
HSV	352°, 17%, 75%
XYZ	39.9837, 38.0095, 39.4116
YIQ	168.0240, 17.7880, 8.0280

Conversions

Conversions Part 2

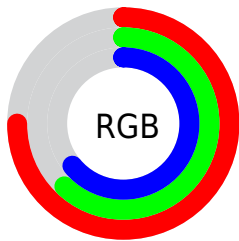
Format	Color
R_{YB}	190, 158, 162
Decimal	12492450
CIE _{Lab}	68.03, 12.46, 2.34
CIE _{LCh}	68, 12.673, 10.646
Yxy	38.0095, 0.3406, 0.3237
Android (android.graphics.Color)	4290682530 (0xFFBE9EA2)
YUV	168.0240, -2.9698, 19.2730
Hunter-Lab	61.6518, 7.8735, 5.2545

Details

The Android color `4290682530` is a light color, and the websafe version is hex `CC9999`. A complement of this color would be `4288593594`, and the grayscale version is `4289243304`.

A 20% lighter version of the original color is `4294432217`, and `4287130478` is the 20% darker color. If you saturate the color by 10%, you get `4290677649`, and if you desaturate by 10%, it is `4290687411`.

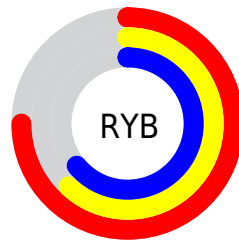
Distribution



Red (75%)

Green (62%)

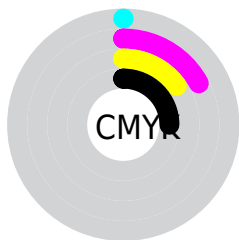
Blue (64%)



Red (75%)

Yellow (62%)

Blue (64%)

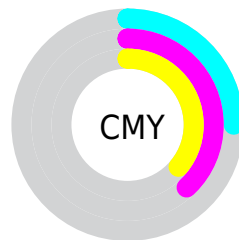


Cyan (0%)

Magenta (17%)

Yellow (15%)

Black (25%)



Cyan (25%)

Magenta (38%)

Yellow (36%)

Brightness & Saturation Gradients

These gradients show how the Android color 4290682530 changes by changing the brightness by 10 percent. The first figure shows a shift by +10% for each color and the second figure -10%.

Similar to the brightness gradients but the following saturation gradients show a change of the Android color 4290682530 by changing the saturation by 10% instead.

 4290682530

 4290682530

4294967295

 4288906376

 4294432217

 4287130478

 4294963701

 4285485654

 4283841343

 4282262825

 4280815893

 4278845440

 4278190080

 4290682530

 4290682530

 4290677649

 4290687411

 4290672769

 4290692291

 4290667888

 4290697172

 4290663008

 4290702053

 4290658127

 4290706933

 4290653246

 4290707455

 4290648366

 4290643485

 4290641944

Harmonies

Analogous

The Analogous color harmony consists of three colors that are next to each other on the color wheel.



[4290289582](#)



[4290682530](#)



[4290617239](#)

Triad

The Triadic color harmony groups three colors that are evenly spaced from another and form a triangle on the color wheel.



4290682530



4288588436



4287736251

Complementary

The Complementary color scheme is a pair of colors which are on the opposite of each other on the color wheel.



4290682530



4288593594

Split Complementary

Split-complementary colors differ from the complementary color scheme. The scheme consists of three colors, the original color and two neighbors of the complement color.



4287212724



4290682530



4287802526

Square

The Square scheme is like the rectangle color scheme, but the four colors are evenly spaced on the color wheel.



4290682530



4289439375



4287278506



4288652732

Rectangle

The Rectangle color scheme consists of four colors that form a rectangle on the color wheel.



4290682530



4290355602



4287278506



4287539897

Sweetspot

The Sweet Spot groups the original color and five complimentary colors.



4290682530



4294437869



4290420414



4286412150



4294769916



4286414205

Same Dimension

The Same Dimension uses a secret algorithm to generate beautiful new colors.



4290682530



4294428364



4290685598



4284372310



4288544788



4280221700

Inverse Universe

The Inverse Universe completely reimagines the original color for something new.



4290682530



4294428364



4288590526



4284372310



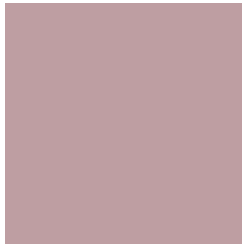
4288544788



4280221700

Previews

White Background



This preview shows how the Android color 4290682530 looks on a white background.

Color Contrast Check

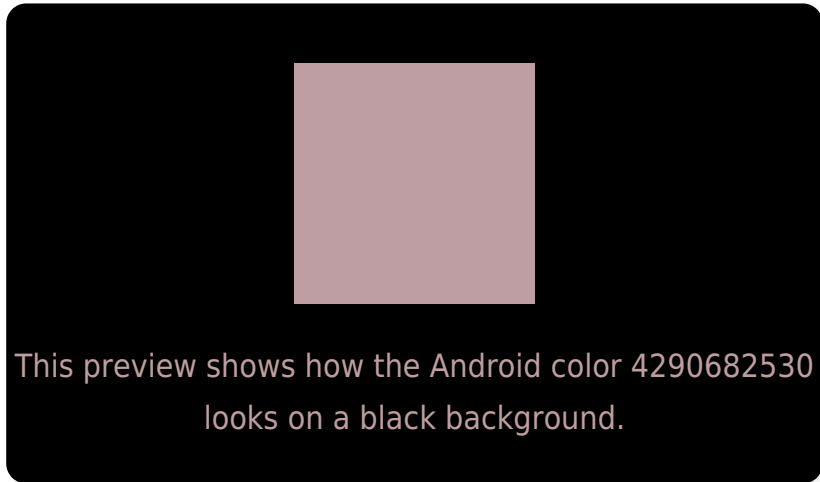
Large Text (above 18pt) WCAG AA × Fail

Any Text WCAG AA × Fail

Large Text (above 18pt) WCAG AAA × Fail

Any Text WCAG AAA × Fail

Black Background



Color Contrast Check

Large Text (above 18pt) WCAG AA ✓ Pass

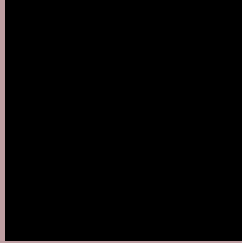
Any Text WCAG AA ✓ Pass

Large Text (above 18pt) WCAG AAA ✓ Pass

Any Text WCAG AAA ✓ Pass

If you want to check with other color combinations, try the [Color Contrast Checker](#).

Android 4290682530 Background



This preview shows how black text looks on a background with the Android color 4290682530.



This preview shows how white text looks on a background with the Android color 4290682530.

Color Blindness Simulation

Color vision deficiency is a very complex topic, and I could not describe the different causes any better than Wikipedia does, so if you want to learn more, you should check out their [article about color blindness](#).

Dichromacy



Original Color
4290682530

Protanopia
4289308070

Deuteranopia
4290289826



Tritanopia
4290747817

Trichromacy



Original Color
4290682530

Protanomaly
4289831589

Deuteranomaly
4290420642

Tritanomaly
4290747814

Monochromacy



Original Color
4290682530

Achromatopsia
4289243304

Achromatomaly
4289766566

CSS Examples

Text

The CSS property to change the color of the text to Android 4290682530 is called "color". The color property can be set on classes, ids or directly on the HTML element.

This example shows how text in the color `rgb(190, 158, 162)` looks like.

```
.text, #text, p{  
    color:rgb(190, 158, 162)  
}
```

If you want to add a text shadow in that color use the text-shadow property, you can generate a text shadow directly with our [CSS Text Shadow Generator](#).

Here you see how black text with a 4 pixel rgb(190, 158, 162) colored shadow looks like.

```
.shadow{ text-shadow: 4px 4px 2px rgb(190, 158, 162) }
```

Border

The CSS property to change the border of an element to Android 4290682530 is called "border". The border property can be set on classes, ids or directly on the HTML element.

This example shows the color as border, it can be applied via the CSS property "border" or "border-color".

```
.border, #border, table{ border:4px solid rgb(190, 158, 162) }
```

If only the border color should be changed use the property `border-color`.

```
.border{ border-color:rgb(190, 158, 162) }
```

If you want to add a box shadow in that color use:

Here you see how a box with a 4 pixel `rgb(190, 158, 162)` colored shadow looks like.

```
.boxshadow{ -moz-box-shadow:4px 4px 4px  
4px rgb(190, 158, 162); -webkit-box-  
shadow:4px 4px 4px 4px rgb(190, 158, 162);  
box-shadow:4px 4px 4px 4px rgb(190, 158,  
162) }
```

Background

The CSS property to change the background color of an element to Android 4290682530 is called "background". The background property can be set on classes, ids or directly on the HTML element.

```
.background, #background, body{  
background: rgb(190, 158, 162) }
```

If only the background color should be changed can be used:

```
.background{ background-color: rgb(190,  
158, 162) }
```

This example shows the color as background, it is applied via the CSS property "background".

To optimize and compress your CSS code, you can use our [online CSS compressor and optimizer](#) based on csstidy. If you want to create a linear or radial gradient as background or border, check our [CSS Gradient Generator](#).

Hey! You found this booklet interesting? Support Converting Colors with the new Membership Option!

The pro membership hides all ads, plus gives you double the colors in the color bucket, and more awesome pro features!

[Learn more, Memberships starting at \\$2.50/m!](#)

**Follow me
on Twitter!**

@ConvertingColor