

Converting Colors

Android(4290686620)

Have a look what the booklet for
Android(4290686620) contains.

Android(4290686620)	3
<i>Conversions</i>	4
<i>Details</i>	6
<i>Harmonies</i>	11
<i>Previews</i>	23
<i>Color Blindness Simulation</i>	26
<i>CSS Examples</i>	29

Color

Android(4290686620)

Conversions

Conversions Part 1

Format	Color
Hex	BEAE9C
RGB	190, 174, 156
RGB Percent	75%, 68%, 61%
CMY	0.2549, 0.3176, 0.3882
CMYK	0.00, 0.08, 0.18, 0.25
HSL	32°, 21%, 68%
HSV	32°, 18%, 75%
XYZ	42.3720, 43.6196, 37.6387
YIQ	176.7320, 15.3140, -2.2060

Conversions

Conversions Part 2

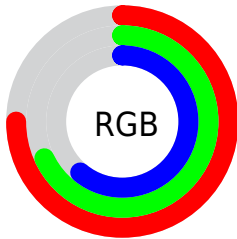
Format	Color
RYB	186, 190, 156
Decimal	12496540
CIELab	71.97, 2.76, 11.31
CIELCh	72, 11.647, 76.277
Yxy	43.6196, 0.3427, 0.3528
Android (android.graphics.Color)	4290686620 (0xFFBEAE9C)
YUV	176.7320, -10.2209, 11.6360
Hunter-Lab	66.0451, -1.0602, 12.4426

Details

The Android color `4290686620` is a light color, and the websafe version is hex `999999`. A complement of this color would be `4288457918`, and the grayscale version is `4289835441`.

A 20% lighter version of the original color is `4294436306`, and `4287134313` is the 20% darker color. If you saturate the color by 10%, you get `4290684297`, and if you desaturate by 10%, it is `4290688943`.

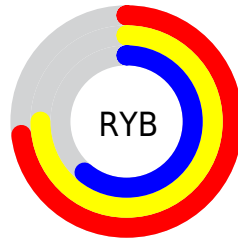
Distribution



Red (75%)

Green (68%)

Blue (61%)



Red (73%)

Yellow (75%)

Blue (61%)

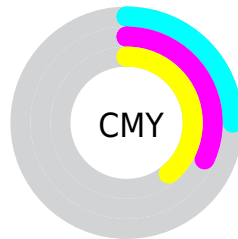


Cyan (0%)

Magenta (8%)

Yellow (18%)

Black (25%)



Cyan (25%)

Magenta (32%)

Yellow (39%)

Brightness & Saturation Gradients

These gradients show how the Android color 4290686620 changes by changing the brightness by 10 percent. The first figure shows a shift by +10% for each color and the second figure -10%.

Similar to the brightness gradients but the following saturation gradients show a change of the Android color 4290686620 by changing the saturation by 10% instead.



4290686620



4290686620

4294967295



4288910210



4294436306



4287134313



4294967279



4285489489



4283844922



4282266404



4280819215



4279305472



4278190080



4290686620



4290686620

 4290684297

 4290688943

 4290681974

 4290691266

 4290679651

 4290693589

 4290677328

 4290695912

 4290675005

 4290698235

 4290672682

 4290700543

 4290670359

 4290702847

 4290668036

 4290705151

 4290667776

 4290707199

Harmonies

Analogous

The Analogous color harmony consists of three colors that are next to each other on the color wheel.



4291144609



4290686620



4289966748

Triad

The Triadic color harmony groups three colors that are evenly spaced from another and form a triangle on the color wheel.



4290686620



4288067510



4290358463

Complementary

The Complementary color scheme is a pair of colors which are on the opposite of each other on the color wheel.



4290686620



4288457918

Split Complementary

Split-complementary colors differ from the complementary color scheme. The scheme consists of three colors, the original color and two neighbors of the complement color.



4289507269



4290686620



4288132543

Square

The Square scheme is like the rectangle color scheme, but the four colors are evenly spaced on the color wheel.



4290686620



4288460459



4288721861



4291013302

Rectangle

The Rectangle color scheme consists of four colors that form a rectangle on the color wheel.



4290686620



4289442975



4288721861



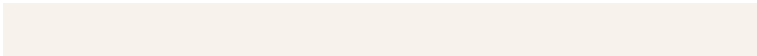
4290096578

Sweetspot

The Sweet Spot groups the original color and five complimentary colors.



4290686620



4294439659



4290682028



4286413173



4294769916



4286414205

Same Dimension

The Same Dimension uses a secret algorithm to generate beautiful new colors.



4290686620



4294434755



4290625180



4284373589



4288566272



4280225792

Inverse Universe

The Inverse Universe completely reimagines the original color for something new.



4288457918



4291026167



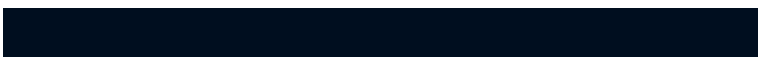
4288519358



4283783518



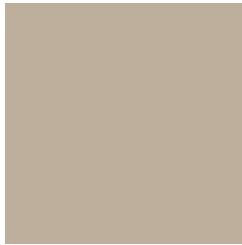
4278209182



4278193695

Previews

White Background



This preview shows how the Android color 4290686620 looks on a white background.

Color Contrast Check

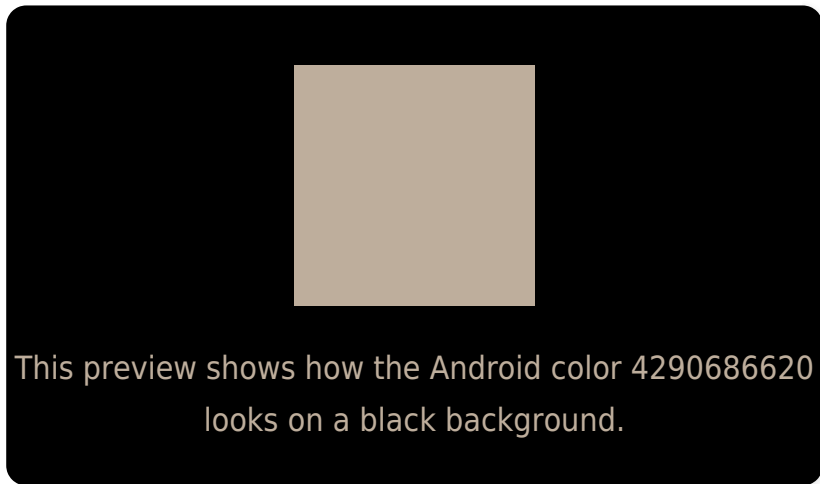
Large Text (above 18pt) WCAG AA × Fail

Any Text WCAG AA × Fail

Large Text (above 18pt) WCAG AAA × Fail

Any Text WCAG AAA × Fail

Black Background



Color Contrast Check

Large Text (above 18pt) WCAG AA ✓ Pass

Any Text WCAG AA ✓ Pass

Large Text (above 18pt) WCAG AAA ✓ Pass

Any Text WCAG AAA ✓ Pass

If you want to check with other color combinations, try the [Color Contrast Checker](#).

Android 4290686620 Background



This preview shows how black text looks on a background with the Android color 4290686620.



This preview shows how white text looks on a background with the Android color 4290686620.

Color Blindness Simulation

Color vision deficiency is a very complex topic, and I could not describe the different causes any better than Wikipedia does, so if you want to learn more, you should check out their [article about color blindness](#).

Dichromacy



Original Color
4290686620

Protanopia
4290293917

Deuteranopia
4291406493



Tritanopia
4290947767

Trichromacy



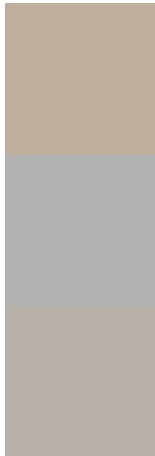
Original Color
4290686620

Protanomaly
4290424733

Deuteranomaly
4291144605

Tritanomaly
4290882477

Monochromacy



Original Color
4290686620

Achromatopsia
4289835441

Achromatomaly
4290162857

CSS Examples

Text

The CSS property to change the color of the text to Android 4290686620 is called "color". The color property can be set on classes, ids or directly on the HTML element.

This example shows how text in the color `rgb(190, 174, 156)` looks like.

```
.text, #text, p{  
    color:rgb(190, 174, 156)  
}
```

If you want to add a text shadow in that color use the text-shadow property, you can generate a text shadow directly with our [CSS Text Shadow Generator](#).

Here you see how black text with a 4 pixel rgb(190, 174, 156) colored shadow looks like.

```
.shadow{ text-shadow: 4px 4px 2px rgb(190, 174, 156) }
```

Border

The CSS property to change the border of an element to Android 4290686620 is called "border". The border property can be set on classes, ids or directly on the HTML element.

This example shows the color as border, it can be applied via the CSS property "border" or "border-color".

```
.border, #border, table{ border:4px solid rgb(190, 174, 156) }
```

If only the border color should be changed use the property `border-color`.

```
.border{ border-color:rgb(190, 174, 156) }
```

If you want to add a box shadow in that color use:

Here you see how a box with a 4 pixel `rgb(190, 174, 156)` colored shadow looks like.

```
.boxshadow{ -moz-box-shadow:4px 4px 4px  
4px rgb(190, 174, 156); -webkit-box-  
shadow:4px 4px 4px 4px rgb(190, 174, 156);  
box-shadow:4px 4px 4px 4px rgb(190, 174,  
156) }
```

Background

The CSS property to change the background color of an element to Android 4290686620 is called "background". The background property can be set on classes, ids or directly on the HTML element.

```
.background, #background, body{  
background: rgb(190, 174, 156) }
```

If only the background color should be changed can be used:

```
.background{ background-color: rgb(190,  
174, 156) }
```

This example shows the color as background, it is applied via the CSS property "background".

To optimize and compress your CSS code, you can use our [online CSS compressor and optimizer](#) based on csstidy. If you want to create a linear or radial gradient as background or border, check our [CSS Gradient Generator](#).

Hey! You found this booklet interesting? Support Converting Colors with the new Membership Option!

The pro membership hides all ads, plus gives you double the colors in the color bucket, and more awesome pro features!

[Learn more, Memberships starting at \\$2.50/m!](#)

**Follow me
on Twitter!**

@ConvertingColor