

Converting Colors

Android(4290737033)

Have a look what the booklet for
Android(4290737033) contains.

Android(4290737033)	3
<i>Conversions</i>	4
<i>Details</i>	6
<i>Harmonies</i>	11
<i>Previews</i>	23
<i>Color Blindness Simulation</i>	26
<i>CSS Examples</i>	29

Color

Android(4290737033)

Conversions

Conversions Part 1

Format	Color
Hex	BF7389
RGB	191, 115, 137
RGB Percent	75%, 45%, 54%
CMY	0.2510, 0.5490, 0.4627
CMYK	0.00, 0.40, 0.28, 0.25
HSL	343°, 37%, 60%
HSV	343°, 40%, 75%
XYZ	32.1319, 25.1440, 26.8266
YIQ	140.2320, 38.2340, 22.9540

Conversions

Conversions Part 2

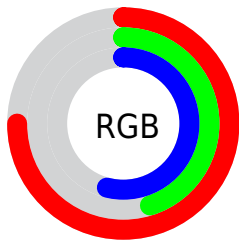
Format	Color
RYB	191, 115, 137
Decimal	12546953
CIELab	57.22, 32.73, 0.85
CIElCh	57, 32.740, 1.492
Yxy	25.1440, 0.3821, 0.2990
Android (android.graphics.Color)	4290737033 (0xFFBF7389)
YUV	140.2320, -1.5934, 44.5235
Hunter-Lab	50.1438, 26.6306, 3.3808

Details

The Android color `4290737033` is a dark color, and the websafe version is hex `996666`. A complement of this color would be `4285775785`, and the grayscale version is `4287401100`.

A 20% lighter version of the original color is `4294551742`, and `4287119703` is the 20% darker color. If you saturate the color by 10%, you get `4290732155`, and if you desaturate by 10%, it is `4290741911`.

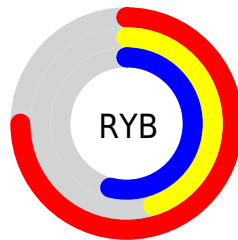
Distribution



Red (75%)

Green (45%)

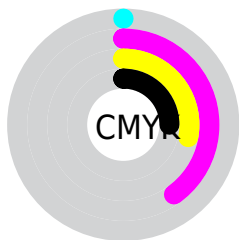
Blue (54%)



Red (75%)

Yellow (45%)

Blue (54%)

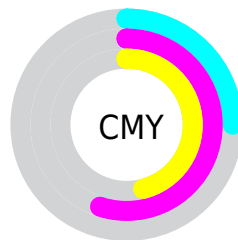


Cyan (0%)

Magenta (40%)

Yellow (28%)

Black (25%)



Cyan (25%)

Magenta (55%)

Yellow (46%)

Brightness & Saturation Gradients

These gradients show how the Android color 4290737033 changes by changing the brightness by 10 percent. The first figure shows a shift by +10% for each color and the second figure -10%.

Similar to the brightness gradients but the following saturation gradients show a change of the Android color 4290737033 by changing the saturation by 10% instead.

 4290737033

 4290737033

4294967295

 4288895600

 4294551742

 4287119703

 4294952154

 4285344064

 4294959351

 4283633450

 4294966783

 4281925654

 4280418305

 4278190080

 4290737033

 4290737033

 4290732155

 4290741911

 4290727278

 4290746788

 4290722400

 4290751666

 4290717523

 4290756543

 4290712645

 4290761677

 4290707512

 4290766554

 4290707511

 4290771432

 4290772982

 4290772991

Harmonies

Analogous

The Analogous color harmony consists of three colors that are next to each other on the color wheel.



4289624229



4290737033



4290737773

Triad

The Triadic color harmony groups three colors that are evenly spaced from another and form a triangle on the color wheel.



4290737033



4286419288



4281177019

Complementary

The Complementary color scheme is a pair of colors which are on the opposite of each other on the color wheel.



4290737033



4285775785

Split Complementary

Split-complementary colors differ from the complementary color scheme. The scheme consists of three colors, the original color and two neighbors of the complement color.



4278294694



4290737033



4284126829

Square

The Square scheme is like the rectangle color scheme, but the four colors are evenly spaced on the color wheel.



4290737033



4288383056



4281506186



4284648642

Rectangle

The Rectangle color scheme consists of four colors that form a rectangle on the color wheel.



4290737033



4290280286



4281506186



4279866805

Sweetspot

The Sweet Spot groups the original color and five complimentary colors.



4290737033



4294433506



4289229759



4286409585



4294769916



4286414205

Same Dimension

The Same Dimension uses a secret algorithm to generate beautiful new colors.



4290737033



4294410659



4290740851



4284372312



4288544814



4280221705

Inverse Universe

The Inverse Universe completely reimagines the original color for something new.



4290737033



4294410659



4285771967



4284372312



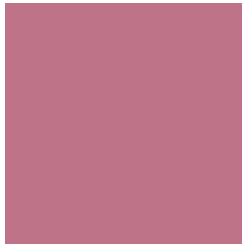
4288544814



4280221705

Previews

White Background



This preview shows how the Android color 4290737033 looks on a white background.

Color Contrast Check

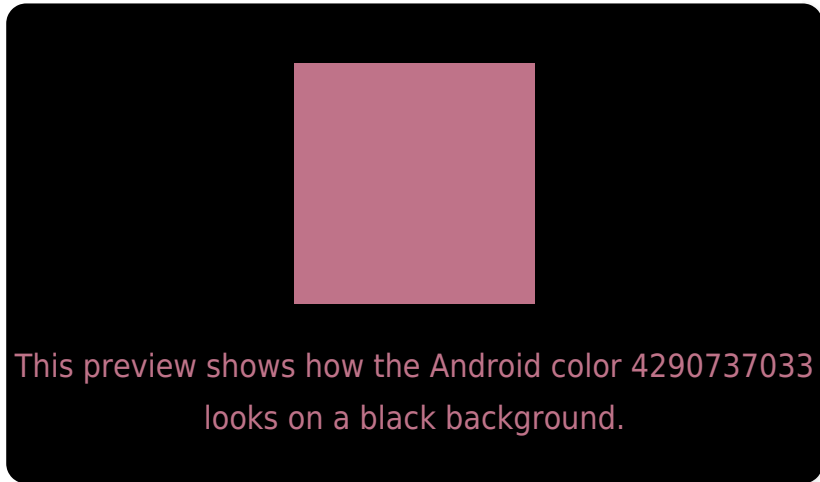
Large Text (above 18pt) WCAG AA ✓ Pass

Any Text WCAG AA ✗ Fail

Large Text (above 18pt) WCAG AAA ✗ Fail

Any Text WCAG AAA ✗ Fail

Black Background



Color Contrast Check

Large Text (above 18pt) WCAG AA ✓ Pass

Any Text WCAG AA ✓ Pass

Large Text (above 18pt) WCAG AAA ✓ Pass

Any Text WCAG AAA × Fail

If you want to check with other color combinations, try the [Color Contrast Checker](#).

Android 4290737033 Background



This preview shows how black text looks on a background with the Android color 4290737033.



This preview shows how white text looks on a background with the Android color 4290737033.

Color Blindness Simulation

Color vision deficiency is a very complex topic, and I could not describe the different causes any better than Wikipedia does, so if you want to learn more, you should check out their [article about color blindness](#).

Dichromacy



Trichromacy



Original Color
4290737033

Protanomaly
4288512401

Deuteranomaly
4289166983

Tritanomaly
4290671746

Monochromacy



Original Color
4290737033

Achromatopsia
4287401100

Achromatomaly
4288643979

CSS Examples

Text

The CSS property to change the color of the text to Android 4290737033 is called "color". The color property can be set on classes, ids or directly on the HTML element.

This example shows how text in the color `rgb(191, 115, 137)` looks like.

```
.text, #text, p{  
    color:rgb(191, 115, 137)  
}
```

If you want to add a text shadow in that color use the text-shadow property, you can generate a text shadow directly with our [CSS Text Shadow Generator](#).

Here you see how black text with a 4 pixel rgb(191, 115, 137) colored shadow looks like.

```
.shadow{ text-shadow: 4px 4px 2px rgb(191, 115, 137) }
```

Border

The CSS property to change the border of an element to Android 4290737033 is called "border". The border property can be set on classes, ids or directly on the HTML element.

This example shows the color as border, it can be applied via the CSS property "border" or "border-color".

```
.border, #border, table{ border:4px solid rgb(191, 115, 137) }
```

If only the border color should be changed use the property `border-color`.

```
.border{ border-color:rgb(191, 115, 137) }
```

If you want to add a box shadow in that color use:

Here you see how a box with a 4 pixel `rgb(191, 115, 137)` colored shadow looks like.

```
.boxshadow{ -moz-box-shadow:4px 4px 4px  
4px rgb(191, 115, 137); -webkit-box-  
shadow:4px 4px 4px 4px rgb(191, 115, 137);  
box-shadow:4px 4px 4px 4px rgb(191, 115,  
137) }
```

Background

The CSS property to change the background color of an element to Android 4290737033 is called "background". The background property can be set on classes, ids or directly on the HTML element.

```
.background, #background, body{  
background: rgb(191, 115, 137) }
```

If only the background color should be changed can be used:

```
.background{ background-color: rgb(191,  
115, 137) }
```

This example shows the color as background, it is applied via the CSS property "background".

To optimize and compress your CSS code, you can use our [online CSS compressor and optimizer](#) based on csstidy. If you want to create a linear or radial gradient as background or border, check our [CSS Gradient Generator](#).

Hey! You found this booklet interesting? Support Converting Colors with the new Membership Option!

The pro membership hides all ads, plus gives you double the colors in the color bucket, and more awesome pro features!

[Learn more, Memberships starting at \\$2.50/m!](#)

**Follow me
on Twitter!**

@ConvertingColor