

# Converting Colors

Android(4290739065)

Have a look what the booklet for  
Android(4290739065) contains.

<b>Android(4290739065)</b> .....	3
<b><i>Conversions</i></b> .....	4
<b><i>Details</i></b> .....	6
<b><i>Harmonies</i></b> .....	11
<b><i>Previews</i></b> .....	23
<b><i>Color Blindness Simulation</i></b> .....	26
<b><i>CSS Examples</i></b> .....	29

# Color

**Android(4290739065)**

# Conversions

## Conversions Part 1

<b>Format</b>	<b>Color</b>
Hex	BF7B79
RGB	191, 123, 121
RGB Percent	75%, 48%, 47%
CMY	0.2510, 0.5176, 0.5255
CMYK	0.00, 0.36, 0.37, 0.25
HSL	2°, 35%, 61%
HSV	2°, 37%, 75%
XYZ	32.0200, 26.6228, 21.5402
YIQ	143.1040, 41.1700, 13.7940

# Conversions

## Conversions Part 2

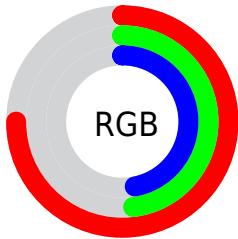
<b>Format</b>	<b>Color</b>
<b>RYB</b>	191, 123, 121
Decimal	12548985
CIELab	58.62, 26.25, 12.13
CIELCh	59, 28.920, 24.789
Yxy	26.6228, 0.3993, 0.3320
Android (android.graphics.Color)	4290739065 (0xFFBF7B79)
YUV	143.1040, -10.8973, 42.0048
Hunter-Lab	51.5972, 20.4776, 11.3664

# Details

The Android color **4290739065** is a dark color, and the websafe version is hex **996666**. A complement of this color would be **4286168511**, and the grayscale version is **4287598479**.

A 20% lighter version of the original color is **4294553773**, and **4287056201** is the 20% darker color. If you saturate the color by 10%, you get **4290734182**, and if you desaturate by 10%, it is **4290743948**.

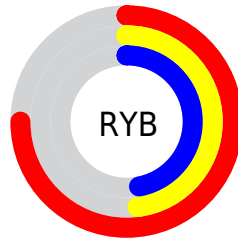
# Distribution



Red (75%)

Green (48%)

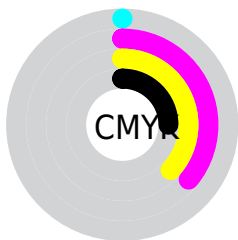
Blue (47%)



Red (75%)

Yellow (48%)

Blue (47%)

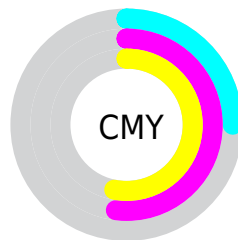


Cyan (0%)

Magenta (36%)

Yellow (37%)

Black (25%)



Cyan (25%)

Magenta (52%)

Yellow (53%)

# Brightness & Saturation Gradients

These gradients show how the Android color 4290739065 changes by changing the brightness by 10 percent. The first figure shows a shift by +10% for each color and the second figure -10%.

Similar to the brightness gradients but the following saturation gradients show a change of the Android color 4290739065 by changing the saturation by 10% instead.





4290739065



4290739065

4294967295



4288897632



4294553773



4287056201



4294954185



4285280818



4294961381



4283570973



4281926403



4280418305



4278190080



4290739065



4290739065



4290734182



4290743948

 4290729555

 4290748575

 4290724672

 4290753458

 4290720045

 4290758085

 4290715161

 4290762969

 4290710534

 4290767596

 4290708736

 4290772479

 4290772991

# Harmonies

## Analogous

The Analogous color harmony consists of three colors that are next to each other on the color wheel.



4290476690



4290739065



4290150757

# Triad

The Triadic color harmony groups three colors that are evenly spaced from another and form a triangle on the color wheel.



4290739065



4285241455



4284715455

# Complementary

The Complementary color scheme is a pair of colors which are on the opposite of each other on the color wheel.



4290739065



4286168511

# Split Complementary

Split-complementary colors differ from the complementary color scheme. The scheme consists of three colors, the original color and two neighbors of the complement color.



4282357686



4290739065



4283276168

# Square

The Square scheme is like the rectangle color scheme, but the four colors are evenly spaced on the color wheel.



4290739065



4287205982



4281768609



4287269051

# Rectangle

The Rectangle color scheme consists of four colors that form a rectangle on the color wheel.



4290739065



4289365852



4281768609



4283863997

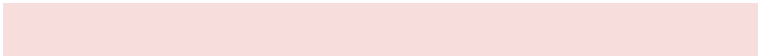


# Sweetspot

The Sweet Spot groups the original color and five complimentary colors.



4290739065



4294434268



4290738622



4286410093



4294769916



4286414205



# Same Dimension

The Same Dimension uses a secret algorithm to generate beautiful new colors.



4290739065



4294413963



4290747769



4284372309



4288546048



4280221952



# Inverse Universe

The Inverse Universe completely reimagines the original color for something new.



4286168511



4287362295



4286159807



4283784798



4278229662

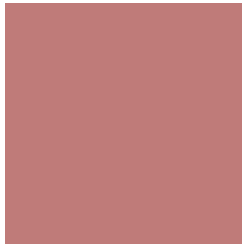


4278197791



# Previews

## White Background



This preview shows how the Android color 4290739065 looks on a white background.

## Color Contrast Check

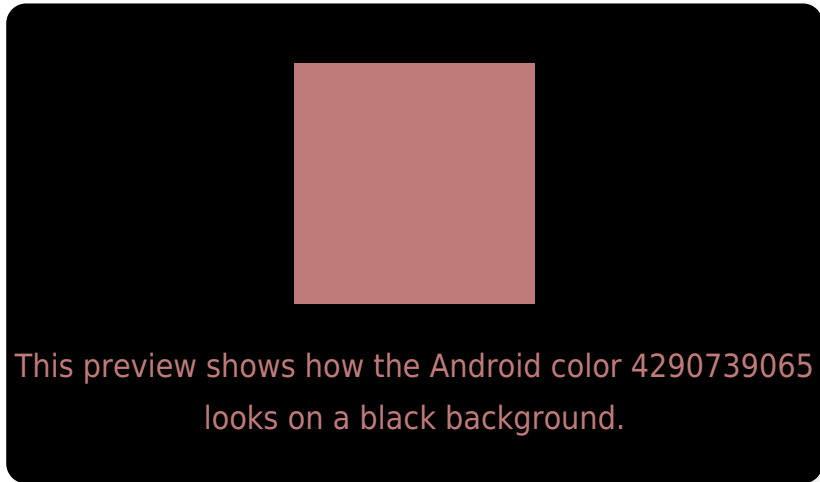
Large Text (above 18pt) WCAG AA ✓ Pass

Any Text WCAG AA ✗ Fail

Large Text (above 18pt) WCAG AAA ✗ Fail

Any Text WCAG AAA ✗ Fail

# Black Background



## Color Contrast Check

Large Text (above 18pt) WCAG AA ✓ Pass

Any Text WCAG AA ✓ Pass

Large Text (above 18pt) WCAG AAA ✓ Pass

Any Text WCAG AAA × Fail

If you want to check with other color combinations, try the [Color Contrast Checker](#).



# Android 4290739065 Background



This preview shows how black text looks on a background with the Android color 4290739065.



This preview shows how white text looks on a background with the Android color 4290739065.

# Color Blindness Simulation

Color vision deficiency is a very complex topic, and I could not describe the different causes any better than Wikipedia does, so if you want to learn more, you should check out their [article about color blindness](#).

## Dichromacy





# Trichromacy



**Original Color**  
4290739065

**Protanomaly**  
4288906879

**Deuteranomaly**  
4289561464

**Tritanomaly**  
4290804351

# Monochromacy



**Original Color**  
4290739065

**Achromatopsia**  
4287598479

**Achromatomaly**  
4288710791

# CSS Examples

## Text

The CSS property to change the color of the text to Android 4290739065 is called "color". The color property can be set on classes, ids or directly on the HTML element.

This example shows how text in the color `rgb(191, 123, 121)` looks like.

```
.text, #text, p{  
    color:rgb(191, 123, 121)  
}
```

If you want to add a text shadow in that color use the text-shadow property, you can generate a text shadow directly with our [CSS Text Shadow Generator](#).

Here you see how black text with a 4 pixel rgb(191, 123, 121) colored shadow looks like.

```
.shadow{ text-shadow: 4px 4px 2px rgb(191, 123, 121) }
```

## Border

The CSS property to change the border of an element to Android 4290739065 is called "border". The border property can be set on classes, ids or directly on the HTML element.

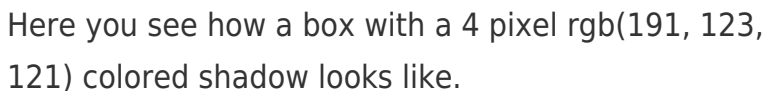
This example shows the color as border, it can be applied via the CSS property "border" or "border-color".

```
.border, #border, table{ border:4px solid rgb(191, 123, 121) }
```

If only the border color should be changed use the property `border-color`.

```
.border{ border-color:rgb(191, 123, 121) }
```

If you want to add a box shadow in that color use:



Here you see how a box with a 4 pixel `rgb(191, 123, 121)` colored shadow looks like.

```
.boxshadow{ -moz-box-shadow:4px 4px 4px 4px rgb(191, 123, 121); -webkit-box-shadow:4px 4px 4px 4px rgb(191, 123, 121); box-shadow:4px 4px 4px 4px rgb(191, 123, 121) }
```

# Background

The CSS property to change the background color of an element to Android 4290739065 is called "background". The background property can be set on classes, ids or directly on the HTML element.

```
.background, #background, body{  
background: rgb(191, 123, 121) }
```

If only the background color should be changed can be used:

```
.background{ background-color: rgb(191,  
123, 121) }
```

This example shows the color as background, it is applied via the CSS property "background".

To optimize and compress your CSS code, you can use our [online CSS compressor and optimizer](#) based on csstidy. If you want to create a linear or radial gradient as background or border, check our [CSS Gradient Generator](#).



Hey! You found this booklet interesting? Support Converting Colors with the new Membership Option!

The pro membership hides all ads, plus gives you double the colors in the color bucket, and more awesome pro features!

**[Learn more, Memberships starting at \\$2.50/m!](#)**

**Follow me  
on Twitter!**

@ConvertingColor