

Converting Colors

Android(4290741082)

Have a look what the booklet for
Android(4290741082) contains.

Android(4290741082)	3
<i>Conversions</i>	4
<i>Details</i>	6
<i>Harmonies</i>	11
<i>Previews</i>	23
<i>Color Blindness Simulation</i>	26
<i>CSS Examples</i>	29

Color

Android(4290741082)

Conversions

Conversions Part 1

Format	Color
Hex	BF835A
RGB	191, 131, 90
RGB Percent	75%, 51%, 35%
CMY	0.2510, 0.4863, 0.6471
CMYK	0.00, 0.31, 0.53, 0.25
HSL	24°, 44%, 55%
HSV	24°, 53%, 75%
XYZ	31.4476, 28.0472, 13.4290
YIQ	144.2660, 48.9210, -0.0310

Conversions

Conversions Part 2

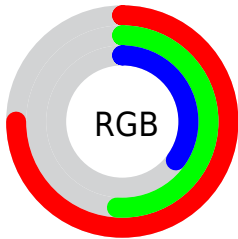
Format	Color
R_{YB}	191, 159, 90
Decimal	12551002
CIE _{Lab}	59.93, 18.53, 31.36
CIE _{LCh}	60, 36.428, 59.421
Yxy	28.0472, 0.4312, 0.3846
Android (android.graphics.Color)	4290741082 (0xFFBF835A)
YUV	144.2660, -26.7531, 40.9857
Hunter-Lab	52.9596, 13.3149, 22.0374

Details

The Android color `4290741082` is a dark color, and the websafe version is hex `CC9966`. A complement of this color would be `4284126911`, and the grayscale version is `4287664272`.

A 20% lighter version of the original color is `4294621325`, and `4286992683` is the 20% darker color. If you saturate the color by 10%, you get `4290738247`, and if you desaturate by 10%, it is `4290743917`.

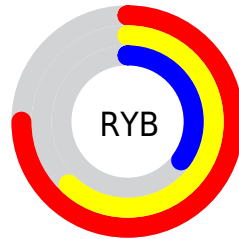
Distribution



Red (75%)

Green (51%)

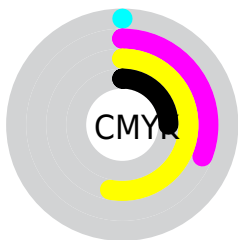
Blue (35%)



Red (75%)

Yellow (62%)

Blue (35%)

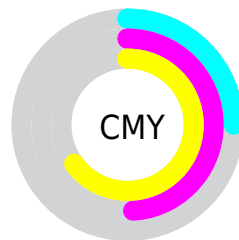


Cyan (0%)

Magenta (31%)

Yellow (53%)

Black (25%)



Cyan (25%)

Magenta (49%)

Yellow (65%)

Brightness & Saturation Gradients

These gradients show how the Android color 4290741082 changes by changing the brightness by 10 percent. The first figure shows a shift by +10% for each color and the second figure -10%.

Similar to the brightness gradients but the following saturation gradients show a change of the Android color 4290741082 by changing the saturation by 10% instead.

 4290741082

 4290741082

4294967295

 4288834114

 4294621325

 4286992683

 4294956199

 4285217301

 4294963395

 4283507712

 4294967263

 4281732864

 4294967291

 4280287233

 4278190080

 4290741082

 4290741082

 4290738247

 4290743917

4290735156

4290747008

4290732321

4290749843

4290729486

4290752678

4290727424

4290755770

4290758605

4290761440

4290764531

4290767359

Harmonies

Analogous

The Analogous color harmony consists of three colors that are next to each other on the color wheel.



4291656307



4290741082



4289039951

Triad

The Triadic color harmony groups three colors that are evenly spaced from another and form a triangle on the color wheel.



4290741082



4281049487



4287858888

Complementary

The Complementary color scheme is a pair of colors which are on the opposite of each other on the color wheel.



4290741082



4284126911

Split Complementary

Split-complementary colors differ from the complementary color scheme. The scheme consists of three colors, the original color and two neighbors of the complement color.



4284388560



4290741082



4278231471

Square

The Square scheme is like the rectangle color scheme, but the four colors are evenly spaced on the color wheel.



4290741082



4284391023



4279082183



4290280882

Rectangle

The Rectangle color scheme consists of four colors that form a rectangle on the color wheel.



4290741082



4287665491



4279082183



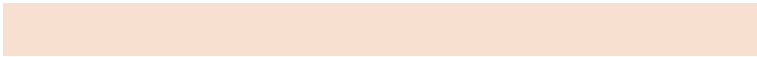
4286811341

Sweetspot

The Sweet Spot groups the original color and five complimentary colors.



4290741082



4294435024



4290730647



4286410597



4294769916



4286414205

Same Dimension

The Same Dimension uses a secret algorithm to generate beautiful new colors.



4290741082



4294417244



4290753882



4284373333



4288561152



4280224768

Inverse Universe

The Inverse Universe completely reimagines the original color for something new.



4284126911



4284266743



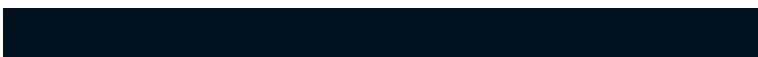
4284114111



4283784030



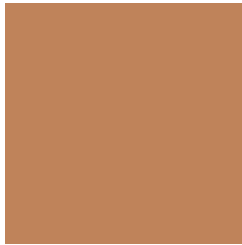
4278214302



4278194719

Previews

White Background



This preview shows how the Android color 4290741082 looks on a white background.

Color Contrast Check

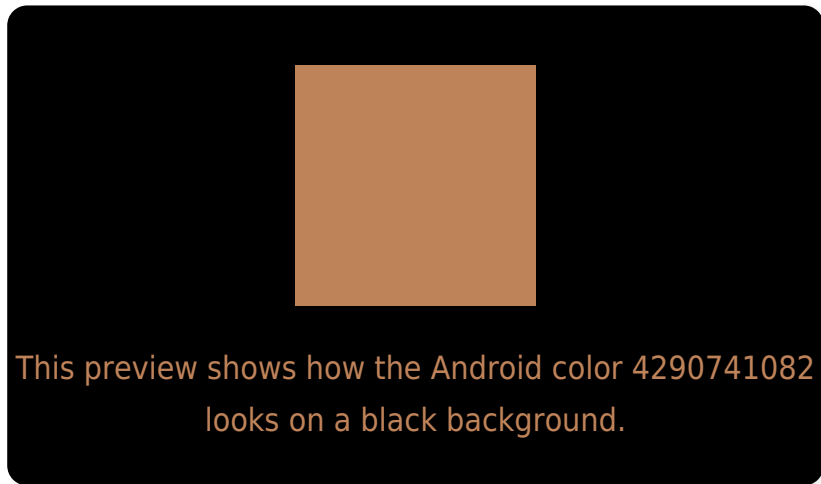
Large Text (above 18pt) WCAG AA ✓ Pass

Any Text WCAG AA ✗ Fail

Large Text (above 18pt) WCAG AAA ✗ Fail

Any Text WCAG AAA ✗ Fail

Black Background



Color Contrast Check

Large Text (above 18pt) WCAG AA ✓ Pass

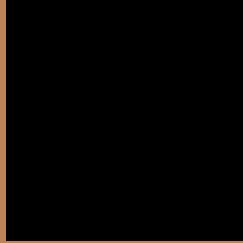
Any Text WCAG AA ✓ Pass

Large Text (above 18pt) WCAG AAA ✓ Pass

Any Text WCAG AAA × Fail

If you want to check with other color combinations, try the [Color Contrast Checker](#).

Android 4290741082 Background



This preview shows how black text looks on a background with the Android color 4290741082.



This preview shows how white text looks on a background with the Android color 4290741082.

Color Blindness Simulation

Color vision deficiency is a very complex topic, and I could not describe the different causes any better than Wikipedia does, so if you want to learn more, you should check out their [article about color blindness](#).

Dichromacy



Original Color
4290741082

Protanopia
4288516447

Deuteranopia
4289694297



Tritanopia
4291001735

Trichromacy



Original Color
4290741082

Protanomaly
4289301597

Deuteranomaly
4290086745

Tritanomaly
4290936695

Monochromacy



Original Color
4290741082

Achromatopsia
4287664272

Achromatomaly
4288777084

CSS Examples

Text

The CSS property to change the color of the text to Android 4290741082 is called "color". The color property can be set on classes, ids or directly on the HTML element.

This example shows how text in the color `rgb(191, 131, 90)` looks like.

```
.text, #text, p{  
    color:rgb(191, 131, 90)  
}
```

If you want to add a text shadow in that color use the text-shadow property, you can generate a text shadow directly with our [CSS Text Shadow Generator](#).

Here you see how black text with a 4 pixel rgb(191, 131, 90) colored shadow looks like.

```
.shadow{ text-shadow: 4px 4px 2px rgb(191, 131, 90) }
```

Border

The CSS property to change the border of an element to Android 4290741082 is called "border". The border property can be set on classes, ids or directly on the HTML element.

This example shows the color as border, it can be applied via the CSS property "border" or "border-color".

```
.border, #border, table{ border:4px solid rgb(191, 131, 90) }
```

If only the border color should be changed use the property `border-color`.

```
.border{ border-color:rgb(191, 131, 90) }
```

If you want to add a box shadow in that color use:

Here you see how a box with a 4 pixel `rgb(191, 131, 90)` colored shadow looks like.

```
.boxshadow{ -moz-box-shadow:4px 4px 4px  
4px rgb(191, 131, 90); -webkit-box-  
shadow:4px 4px 4px 4px rgb(191, 131, 90);  
box-shadow:4px 4px 4px 4px rgb(191, 131,  
90) }
```

Background

The CSS property to change the background color of an element to Android 4290741082 is called "background". The background property can be set on classes, ids or directly on the HTML element.

```
.background, #background, body{  
background: rgb(191, 131, 90) }
```

If only the background color should be changed can be used:

```
.background{ background-color: rgb(191,  
131, 90) }
```

This example shows the color as background, it is applied via the CSS property "background".

To optimize and compress your CSS code, you can use our [online CSS compressor and optimizer](#) based on csstidy. If you want to create a linear or radial gradient as background or border, check our [CSS Gradient Generator](#).

Hey! You found this booklet interesting? Support Converting Colors with the new Membership Option!

The pro membership hides all ads, plus gives you double the colors in the color bucket, and more awesome pro features!

[Learn more, Memberships starting at \\$2.50/m!](#)

**Follow me
on Twitter!**

@ConvertingColor