

# Converting Colors

Android(4290743646)

Have a look what the booklet for  
Android(4290743646) contains.

|  |    |
|--|----|
| <b>Android(4290743646)</b> .....               | 3  |
| <b><i>Conversions</i></b> .....                | 4  |
| <b><i>Details</i></b> .....                    | 6  |
| <b><i>Harmonies</i></b> .....                  | 11 |
| <b><i>Previews</i></b> .....                   | 23 |
| <b><i>Color Blindness Simulation</i></b> ..... | 26 |
| <b><i>CSS Examples</i></b> .....               | 29 |

**Color**

**Android(4290743646)**

# Conversions

## Conversions Part 1

| <b>Format</b> | <b>Color</b>               |
|---------------|----------------------------|
| Hex           | BF8D5E                     |
| RGB           | 191, 141, 94               |
| RGB Percent   | 75%, 55%, 37%              |
| CMY           | 0.2510, 0.4471, 0.6314     |
| CMYK          | 0.00, 0.26, 0.51, 0.25     |
| HSL           | 29°, 43%, 56%              |
| HSV           | 29°, 51%, 75%              |
| XYZ           | 33.0311, 30.9343, 14.8197  |
| YIQ           | 150.5920, 44.8870, -4.0170 |

# Conversions

## Conversions Part 2

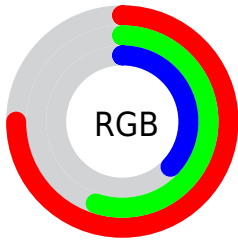
| Format                              | Color  |
|-------------------------------------|--|
| <a href="#">RYB</a>                 | <a href="#">191, 185, 94</a>                                 |
| Decimal                             | <a href="#">12553566</a>                                     |
| CIELab                              | <a href="#">62.45, 13.38, 32.38</a>                          |
| CIElCh                              | <a href="#">62, 35.038, 67.557</a>                           |
| Yxy                                 | <a href="#">30.9343, 0.4193, 0.3926</a>                      |
| Android<br>(android.graphics.Color) | <a href="#">4290743646</a><br>( <a href="#">0xFFBF8D5E</a> ) |
| YUV                                 | <a href="#">150.5920, -27.8999, 35.4378</a>                  |
| Hunter-Lab                          | <a href="#">55.6186, 8.6762, 23.1351</a>                     |

# Details

The Android color **4290743646** is a dark color, and the websafe version is hex **CC9966**. A complement of this color would be **4284387519**, and the grayscale version is **4288124823**.

A 20% lighter version of the original color is **4294558609**, and **4287060782** is the 20% darker color. If you saturate the color by 10%, you get **4290741067**, and if you desaturate by 10%, it is **4290746225**.

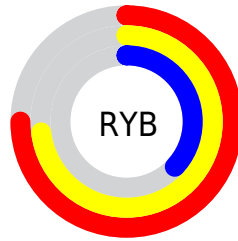
# Distribution



Red (75%)

Green (55%)

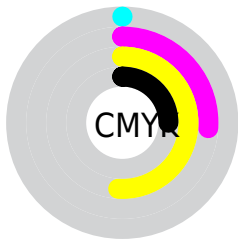
Blue (37%)



Red (75%)

Yellow (73%)

Blue (37%)

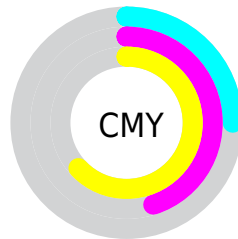


Cyan (0%)

Magenta (26%)

Yellow (51%)

Black (25%)



Cyan (25%)

Magenta (45%)

Yellow (63%)

# Brightness & Saturation Gradients

These gradients show how the Android color 4290743646 changes by changing the brightness by 10 percent. The first figure shows a shift by +10% for each color and the second figure -10%.

Similar to the brightness gradients but the following saturation gradients show a change of the Android color 4290743646 by changing the saturation by 10% instead.





4290743646



4290743646

4294967295



4288901958



4294558609



4287060782



4294959020



4285285144



4294966215



4283575552



4294967268



4281866240



4280287232



4278190080



4290743646



4290743646



4290741067



4290746225

 4290738488

 4290748804

 4290735909

 4290751383

 4290733586

 4290753706

 4290731264

 4290756286

 4290758865

 4290761444

 4290764023

 4290766591

# Harmonies

## Analogous

The Analogous color harmony consists of three colors that are next to each other on the color wheel.



4291855219



4290743646



4288976985

# Triad

The Triadic color harmony groups three colors that are evenly spaced from another and form a triangle on the color wheel.



4290743646



4281247902



4289039560

# Complementary

The Complementary color scheme is a pair of colors which are on the opposite of each other on the color wheel.



4290743646



4284387519

# Split Complementary

Split-complementary colors differ from the complementary color scheme. The scheme consists of three colors, the original color and two neighbors of the complement color.



4286027732



4290743646



4278363836

# Square

The Square scheme is like the rectangle color scheme, but the four colors are evenly spaced on the color wheel.



4290743646



4284262014



4282294736



4291134127

# Rectangle

The Rectangle color scheme consists of four colors that form a rectangle on the color wheel.



4290743646



4287536735



4282294736



4288123086

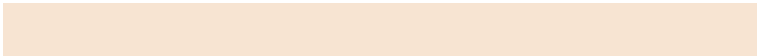


# Sweetspot

The Sweet Spot groups the original color and five complimentary colors.



4290743646



4294436050



4290731664



4286411110



4294769916



4286414205



# Same Dimension

The Same Dimension uses a secret algorithm to generate beautiful new colors.



4290743646



4294421088



4290755934



4284373333



4288564480



4280225536



# Inverse Universe

The Inverse Universe completely reimagines the original color for something new.



4284387519



4284526327



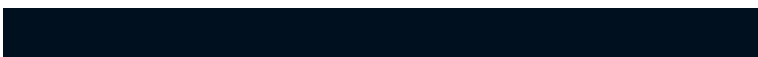
4284375231



4283783774



4278210974

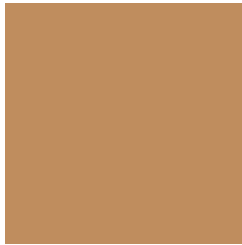


4278194207



# Previews

## White Background



This preview shows how the Android color 4290743646 looks on a white background.

## Color Contrast Check

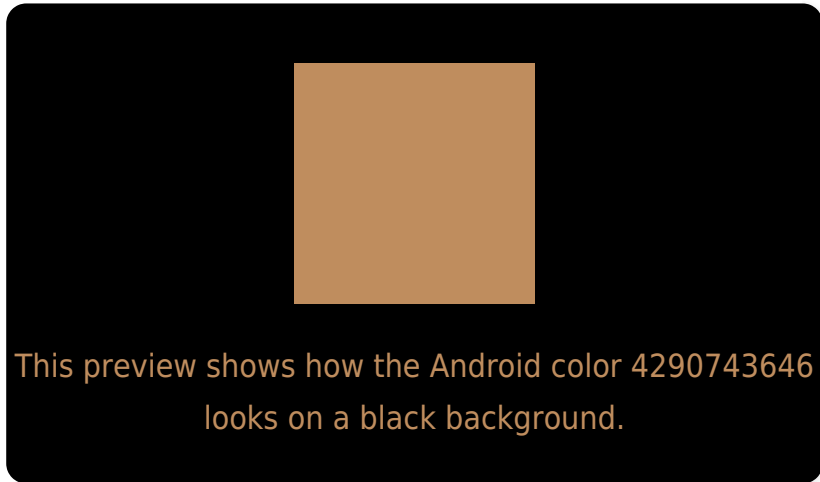
Large Text (above 18pt) WCAG AA × Fail

Any Text WCAG AA × Fail

Large Text (above 18pt) WCAG AAA × Fail

Any Text WCAG AAA × Fail

# Black Background



## Color Contrast Check

Large Text (above 18pt) WCAG AA ✓ Pass

Any Text WCAG AA ✓ Pass

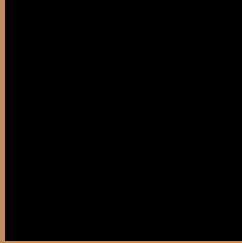
Large Text (above 18pt) WCAG AAA ✓ Pass

Any Text WCAG AAA ✓ Pass

If you want to check with other color combinations, try the [Color Contrast Checker](#).



# Android 4290743646 Background



This preview shows how black text looks on a background with the Android color 4290743646.



This preview shows how white text looks on a background with the Android color 4290743646.

# Color Blindness Simulation

Color vision deficiency is a very complex topic, and I could not describe the different causes any better than Wikipedia does, so if you want to learn more, you should check out their [article about color blindness](#).


## Dichromacy



**Original Color**  
4290743646

**Protanopia**  
4289042274

**Deuteranopia**  
4290220381



**Tritanopia**  
4291004305

# Trichromacy



**Original Color**  
4290743646

**Protanomaly**  
4289631073

**Deuteranomaly**  
4290416733

**Tritanomaly**  
4290939262

# Monochromacy



**Original Color**  
4290743646

**Achromatopsia**  
4288124823

**Achromatomaly**  
4289106818

# CSS Examples

## Text

The CSS property to change the color of the text to Android 4290743646 is called "color". The color property can be set on classes, ids or directly on the HTML element.

This example shows how text in the color `rgb(191, 141, 94)` looks like.

```
.text, #text, p{  
    color:rgb(191, 141, 94)  
}
```

If you want to add a text shadow in that color use the text-shadow property, you can generate a text shadow directly with our [CSS Text Shadow Generator](#).

Here you see how black text with a 4 pixel rgb(191, 141, 94) colored shadow looks like.

```
.shadow{ text-shadow: 4px 4px 2px rgb(191, 141, 94) }
```

## Border

The CSS property to change the border of an element to Android 4290743646 is called "border". The border property can be set on classes, ids or directly on the HTML element.

This example shows the color as border, it can be applied via the CSS property "border" or "border-color".

```
.border, #border, table{ border:4px solid rgb(191, 141, 94) }
```

If only the border color should be changed use the property `border-color`.

```
.border{ border-color:rgb(191, 141, 94) }
```

If you want to add a box shadow in that color use:

Here you see how a box with a 4 pixel `rgb(191, 141, 94)` colored shadow looks like.

```
.boxshadow{ -moz-box-shadow:4px 4px 4px  
4px rgb(191, 141, 94); -webkit-box-  
shadow:4px 4px 4px 4px rgb(191, 141, 94);  
box-shadow:4px 4px 4px 4px rgb(191, 141,  
94) }
```

# Background

The CSS property to change the background color of an element to Android 4290743646 is called "background". The background property can be set on classes, ids or directly on the HTML element.

```
.background, #background, body{  
background: rgb(191, 141, 94) }
```

If only the background color should be changed can be used:

```
.background{ background-color: rgb(191,  
141, 94) }
```

This example shows the color as background, it is applied via the CSS property "background".

To optimize and compress your CSS code, you can use our [online CSS compressor and optimizer](#) based on csstidy. If you want to create a linear or radial gradient as background or border, check our [CSS Gradient Generator](#).



Hey! You found this booklet interesting? Support Converting Colors with the new Membership Option!

The pro membership hides all ads, plus gives you double the colors in the color bucket, and more awesome pro features!

**[Learn more, Memberships starting at \\$2.50/m!](#)**

**Follow me  
on Twitter!**

@ConvertingColor