

Converting Colors

Android(4290747284)

Have a look what the booklet for
Android(4290747284) contains.

Android(4290747284)	3
<i>Conversions</i>	4
<i>Details</i>	6
<i>Harmonies</i>	11
<i>Previews</i>	23
<i>Color Blindness Simulation</i>	26
<i>CSS Examples</i>	29

Color

Android(4290747284)

Conversions

Conversions Part 1

Format	Color
Hex	BF9B94
RGB	191, 155, 148
RGB Percent	75%, 61%, 58%
CMY	0.2510, 0.3922, 0.4196
CMYK	0.00, 0.19, 0.23, 0.25
HSL	10°, 25%, 66%
HSV	10°, 23%, 75%
XYZ	38.5525, 36.6572, 33.0606
YIQ	164.9660, 23.7030, 5.4550

Conversions

Conversions Part 2

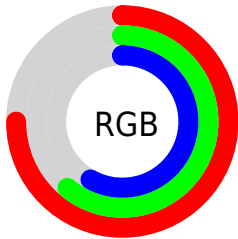
Format	Color
RYB	191, 156, 148
Decimal	12557204
CIELab	67.02, 12.28, 8.71
CIELCh	67, 15.055, 35.355
Yxy	36.6572, 0.3561, 0.3386
Android (android.graphics.Color)	4290747284 (0xFFBF9B94)
YUV	164.9660, -8.3642, 22.8318
Hunter-Lab	60.5452, 7.7069, 10.0064

Details

The Android color `4290747284` is a light color, and the websafe version is hex `CC9999`. A complement of this color would be `4287936703`, and the grayscale version is `4289045925`.

A 20% lighter version of the original color is `4294496970`, and `4287195233` is the 20% darker color. If you saturate the color by 10%, you get `4290743169`, and if you desaturate by 10%, it is `4290751399`.

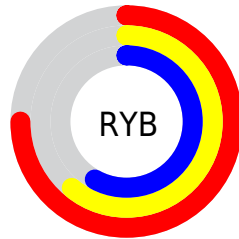
Distribution



Red (75%)

Green (61%)

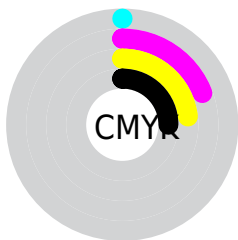
Blue (58%)



Red (75%)

Yellow (61%)

Blue (58%)

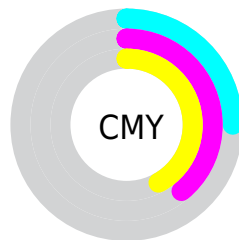


Cyan (0%)

Magenta (19%)

Yellow (23%)

Black (25%)



Cyan (25%)

Magenta (39%)

Yellow (42%)

Brightness & Saturation Gradients

These gradients show how the Android color 4290747284 changes by changing the brightness by 10 percent. The first figure shows a shift by +10% for each color and the second figure -10%.

Similar to the brightness gradients but the following saturation gradients show a change of the Android color 4290747284 by changing the saturation by 10% instead.

 4290747284

 4290747284

4294967295

 4288971130

 4294496970

 4287195233

 4294962918

 4285485130

 4283840819

 4282262302

 4280815109

 4278190080

 4290747284

 4290747284

 4290743169

 4290751399

 4290739054

 4290755514

 4290734939

 4290759629

 4290730824

 4290763744

 4290726709

 4290767860

 4290722593

 4290771967

 4290718478

 4290772991

 4290715392

Harmonies

Analogous

The Analogous color harmony consists of three colors that are next to each other on the color wheel.



4290747041



4290747284



4290289291

Triad

The Triadic color harmony groups three colors that are evenly spaced from another and form a triangle on the color wheel.



4290747284



4287474327



4288127934

Complementary

The Complementary color scheme is a pair of colors which are on the opposite of each other on the color wheel.



4290747284



4287936703

Split Complementary

Split-complementary colors differ from the complementary color scheme. The scheme consists of three colors, the original color and two neighbors of the complement color.



4287146171



4290747284



4286753701

Square

The Square scheme is like the rectangle color scheme, but the four colors are evenly spaced on the color wheel.



4290747284



4288456589



4286622386



4289306553

Rectangle

The Rectangle color scheme consists of four colors that form a rectangle on the color wheel.



4290747284



4289765768



4286622386



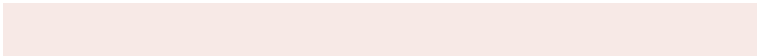
4287800766

Sweetspot

The Sweet Spot groups the original color and five complimentary colors.



4290747284



4294437350



4290745529



4286412147



4294769916



4286414205

Same Dimension

The Same Dimension uses a secret algorithm to generate beautiful new colors.



4290747284



4294426549



4290752660



4284372565



4288551424



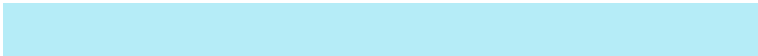
4280222976

Inverse Universe

The Inverse Universe completely reimagines the original color for something new.



4287936703



4290112759



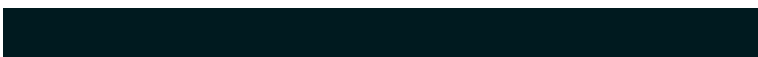
4287931327



4283784542



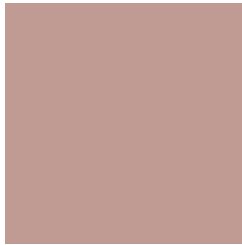
4278224030



4278196767

Previews

White Background



This preview shows how the Android color 4290747284 looks on a white background.

Color Contrast Check

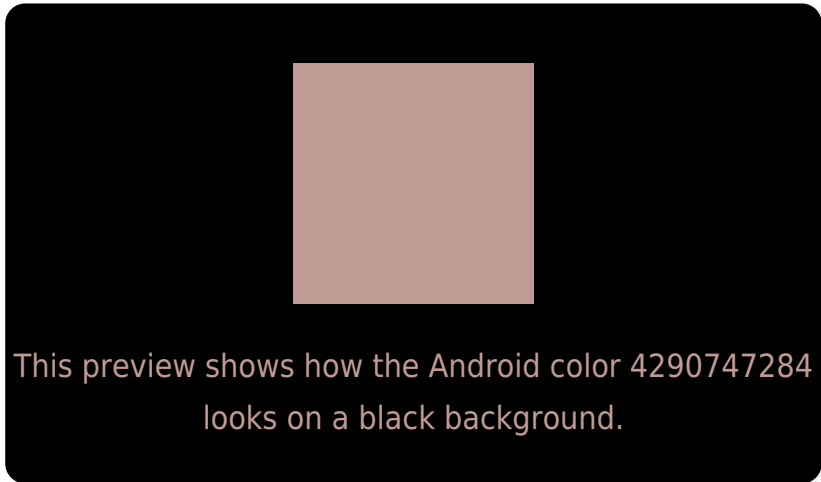
Large Text (above 18pt) WCAG AA × Fail

Any Text WCAG AA × Fail

Large Text (above 18pt) WCAG AAA × Fail

Any Text WCAG AAA × Fail

Black Background



Color Contrast Check

Large Text (above 18pt) WCAG AA ✓ Pass

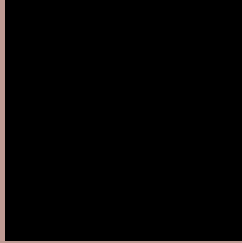
Any Text WCAG AA ✓ Pass

Large Text (above 18pt) WCAG AAA ✓ Pass

Any Text WCAG AAA ✓ Pass

If you want to check with other color combinations, try the [Color Contrast Checker](#).

Android 4290747284 Background



This preview shows how black text looks on a background with the Android color 4290747284.



This preview shows how white text looks on a background with the Android color 4290747284.

Color Blindness Simulation

Color vision deficiency is a very complex topic, and I could not describe the different causes any better than Wikipedia does, so if you want to learn more, you should check out their [article about color blindness](#).

Dichromacy



Original Color
4290747284

Protanopia
4289307544

Deuteranopia
4290354580



Tritanopia
4290877860

Trichromacy



Original Color

4290747284

Protanomaly

4289831063

Deuteranomaly

4290485396

Tritanomaly

4290812574

Monochromacy



Original Color

4290747284

Achromatopsia

4289045925

Achromatomaly

4289634719

CSS Examples

Text

The CSS property to change the color of the text to Android 4290747284 is called "color". The color property can be set on classes, ids or directly on the HTML element.

This example shows how text in the color `rgb(191, 155, 148)` looks like.

```
.text, #text, p{  
    color:rgb(191, 155, 148)  
}
```

If you want to add a text shadow in that color use the text-shadow property, you can generate a text shadow directly with our [CSS Text Shadow Generator](#).

Here you see how black text with a 4 pixel rgb(191, 155, 148) colored shadow looks like.

```
.shadow{ text-shadow: 4px 4px 2px rgb(191, 155, 148) }
```

Border

The CSS property to change the border of an element to Android 4290747284 is called "border". The border property can be set on classes, ids or directly on the HTML element.

This example shows the color as border, it can be applied via the CSS property "border" or "border-color".

```
.border, #border, table{ border:4px solid rgb(191, 155, 148) }
```

If only the border color should be changed use the property `border-color`.

```
.border{ border-color:rgb(191, 155, 148) }
```

If you want to add a box shadow in that color use:

Here you see how a box with a 4 pixel `rgb(191, 155, 148)` colored shadow looks like.

```
.boxshadow{ -moz-box-shadow:4px 4px 4px  
4px rgb(191, 155, 148); -webkit-box-  
shadow:4px 4px 4px 4px rgb(191, 155, 148);  
box-shadow:4px 4px 4px 4px rgb(191, 155,  
148) }
```

Background

The CSS property to change the background color of an element to Android 4290747284 is called "background". The background property can be set on classes, ids or directly on the HTML element.

```
.background, #background, body{  
background: rgb(191, 155, 148) }
```

If only the background color should be changed can be used:

```
.background{ background-color: rgb(191,  
155, 148) }
```

This example shows the color as background, it is applied via the CSS property "background".

To optimize and compress your CSS code, you can use our [online CSS compressor and optimizer](#) based on csstidy. If you want to create a linear or radial gradient as background or border, check our [CSS Gradient Generator](#).

Hey! You found this booklet interesting? Support Converting Colors with the new Membership Option!

The pro membership hides all ads, plus gives you double the colors in the color bucket, and more awesome pro features!

[Learn more, Memberships starting at \\$2.50/m!](#)

**Follow me
on Twitter!**

@ConvertingColor