

Converting Colors

Android(4290747508)

Have a look what the booklet for
Android(4290747508) contains.

| | |
|--|----|
| Android(4290747508) | 3 |
| <i>Conversions</i> | 4 |
| <i>Details</i> | 6 |
| <i>Harmonies</i> | 11 |
| <i>Previews</i> | 23 |
| <i>Color Blindness Simulation</i> | 26 |
| <i>CSS Examples</i> | 29 |

Color

Android(4290747508)

Conversions

Conversions Part 1

| Format | Color |
|-------------|----------------------------|
| Hex | BF9C74 |
| RGB | 191, 156, 116 |
| RGB Percent | 75%, 61%, 45% |
| CMY | 0.2510, 0.3882, 0.5451 |
| CMYK | 0.00, 0.18, 0.39, 0.25 |
| HSL | 32°, 37%, 60% |
| HSV | 32°, 39%, 75% |
| XYZ | 36.5267, 36.1143, 21.5686 |
| YIQ | 161.9050, 33.7000, -5.0200 |

Conversions

Conversions Part 2

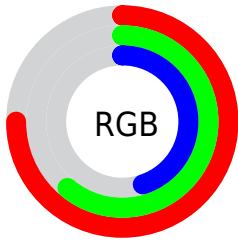
| Format | Color |
|-------------------------------------|--|
| RYB | 182, 191, 116 |
| Decimal | 12557428 |
| CIELab | 66.61, 7.45, 25.84 |
| CIElCh | 67, 26.893, 73.908 |
| Yxy | 36.1143, 0.3877, 0.3833 |
| Android (android.graphics.Color) | 4290747508 (0xFFBF9C74) |
| YUV | 161.9050, -22.6312, 25.5163 |
| Hunter-Lab | 60.0951, 3.3284, 20.7870 |

Details

The Android color **4290747508** is a light color, and the websafe version is hex **CC9966**. A complement of this color would be **4285831103**, and the grayscale version is **4288848546**.

A 20% lighter version of the original color is **4294562472**, and **4287129923** is the 20% darker color. If you saturate the color by 10%, you get **4290745185**, and if you desaturate by 10%, it is **4290749831**.

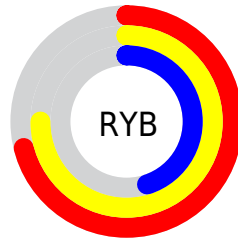
Distribution



Red (75%)

Green (61%)

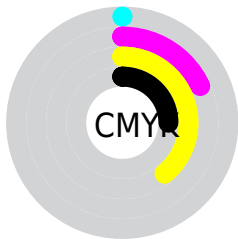
Blue (45%)



Red (71%)

Yellow (75%)

Blue (45%)

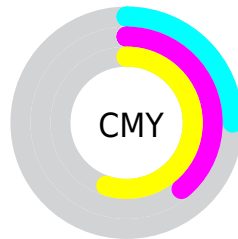


Cyan (0%)

Magenta (18%)

Yellow (39%)

Black (25%)



Cyan (25%)

Magenta (39%)

Yellow (55%)

Brightness & Saturation Gradients

These gradients show how the Android color 4290747508 changes by changing the brightness by 10 percent. The first figure shows a shift by +10% for each color and the second figure -10%.

Similar to the brightness gradients but the following saturation gradients show a change of the Android color 4290747508 by changing the saturation by 10% instead.

 4290747508

 4290747508

4294967295

 4288905819

 4294562472

 4287129923

 4294963140

 4285419820

 4294967264

 4283709975

4294967292

 4282131456

 4280487936

 4278190080

 4290747508

 4290747508

 4290745185

 4290749831

■ 4290742862

■ 4290752154

■ 4290740539

■ 4290754477

■ 4290738216

■ 4290756800

■ 4290735892

■ 4290759123

■ 4290733825

■ 4290761191

■ 4290733568

■ 4290763514

■ 4290765823

■ 4290768127

Harmonies

Analogous

The Analogous color harmony consists of three colors that are next to each other on the color wheel.



4291728514



4290747508



4289242227

Triad

The Triadic color harmony groups three colors that are evenly spaced from another and form a triangle on the color wheel.



4290747508



4284264365



4290025669

Complementary

The Complementary color scheme is a pair of colors which are on the opposite of each other on the color wheel.



4290747508



4285831103

Split Complementary

Split-complementary colors differ from the complementary color scheme. The scheme consists of three colors, the original color and two neighbors of the complement color.



4287930577



4290747508



4284132803

Square

The Square scheme is like the rectangle color scheme, but the four colors are evenly spaced on the color wheel.



4290747508



4285640596



4285638864



4291465904

Rectangle

The Rectangle color scheme consists of four colors that form a rectangle on the color wheel.



4290747508



4288063865



4285638864



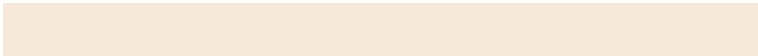
4289371082

Sweetspot

The Sweet Spot groups the original color and five complimentary colors.



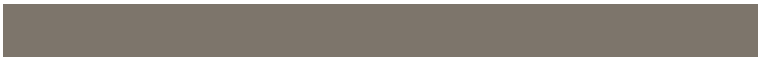
4290747508



4294437338



4290737303



4286412139



4294769916



4286414205

Same Dimension

The Same Dimension uses a secret algorithm to generate beautiful new colors.



4290747508



4294427011



4290625396



4284373589



4288566272



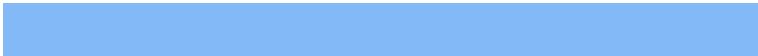
4280225792

Inverse Universe

The Inverse Universe completely reimagines the original color for something new.



4285831103



4286822903



4285953215



4283783518



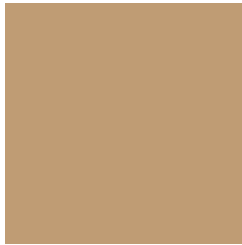
4278209182



4278193695

Previews

White Background



This preview shows how the Android color 4290747508 looks on a white background.

Color Contrast Check

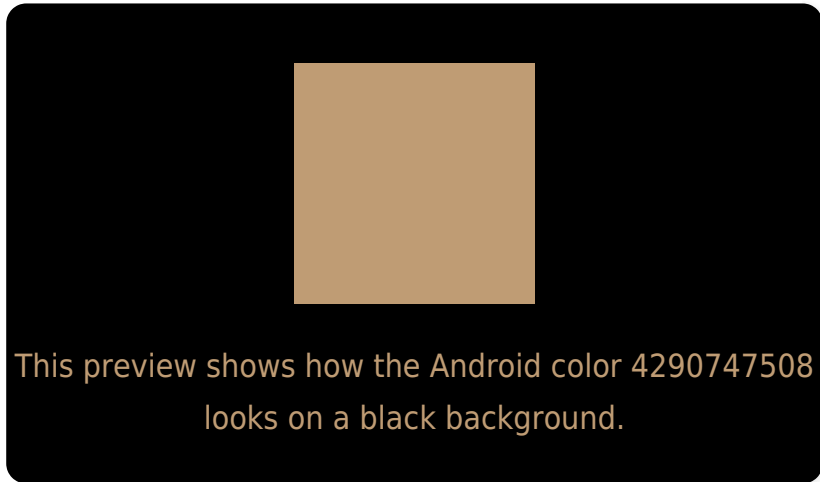
Large Text (above 18pt) WCAG AA × Fail

Any Text WCAG AA × Fail

Large Text (above 18pt) WCAG AAA × Fail

Any Text WCAG AAA × Fail

Black Background



Color Contrast Check

Large Text (above 18pt) WCAG AA ✓ Pass

Any Text WCAG AA ✓ Pass

Large Text (above 18pt) WCAG AAA ✓ Pass

Any Text WCAG AAA ✓ Pass

If you want to check with other color combinations, try the [Color Contrast Checker](#).

Android 4290747508 Background



This preview shows how black text looks on a background with the Android color 4290747508.



This preview shows how white text looks on a background with the Android color 4290747508.

Color Blindness Simulation

Color vision deficiency is a very complex topic, and I could not describe the different causes any better than Wikipedia does, so if you want to learn more, you should check out their [article about color blindness](#).


Dichromacy



Original Color
4290747508

Protanopia
4289634935

Deuteranopia
4290878324



Tritanopia
4291073698

Trichromacy



Original Color
4290747508

Protanomaly
4290027638

Deuteranomaly
4290812788

Tritanomaly
4290943121

Monochromacy



Original Color
4290747508

Achromatopsia
4288848546

Achromatomaly
4289568913

CSS Examples

Text

The CSS property to change the color of the text to Android 4290747508 is called "color". The color property can be set on classes, ids or directly on the HTML element.

This example shows how text in the color `rgb(191, 156, 116)` looks like.

```
.text, #text, p{  
    color:rgb(191, 156, 116)  
}
```

If you want to add a text shadow in that color use the text-shadow property, you can generate a text shadow directly with our [CSS Text Shadow Generator](#).

Here you see how black text with a 4 pixel rgb(191, 156, 116) colored shadow looks like.

```
.shadow{ text-shadow: 4px 4px 2px rgb(191, 156, 116) }
```

Border

The CSS property to change the border of an element to Android 4290747508 is called "border". The border property can be set on classes, ids or directly on the HTML element.

This example shows the color as border, it can be applied via the CSS property "border" or "border-color".

```
.border, #border, table{ border:4px solid rgb(191, 156, 116) }
```

If only the border color should be changed use the property `border-color`.

```
.border{ border-color:rgb(191, 156, 116) }
```

If you want to add a box shadow in that color use:

Here you see how a box with a 4 pixel `rgb(191, 156, 116)` colored shadow looks like.

```
.boxshadow{ -moz-box-shadow:4px 4px 4px  
4px rgb(191, 156, 116); -webkit-box-  
shadow:4px 4px 4px 4px rgb(191, 156, 116);  
box-shadow:4px 4px 4px 4px rgb(191, 156,  
116) }
```

Background

The CSS property to change the background color of an element to Android 4290747508 is called "background". The background property can be set on classes, ids or directly on the HTML element.

```
.background, #background, body{  
background: rgb(191, 156, 116) }
```

If only the background color should be changed can be used:

```
.background{ background-color: rgb(191,  
156, 116) }
```

This example shows the color as background, it is applied via the CSS property "background".

To optimize and compress your CSS code, you can use our [online CSS compressor and optimizer](#) based on csstidy. If you want to create a linear or radial gradient as background or border, check our [CSS Gradient Generator](#).

Hey! You found this booklet interesting? Support Converting Colors with the new Membership Option!

The pro membership hides all ads, plus gives you double the colors in the color bucket, and more awesome pro features!

[Learn more, Memberships starting at \\$2.50/m!](#)

**Follow me
on Twitter!**

@ConvertingColor