

Converting Colors

Android(4290787946)

Have a look what the booklet for
Android(4290787946) contains.

Android(4290787946)	3
<i>Conversions</i>	4
<i>Details</i>	6
<i>Harmonies</i>	11
<i>Previews</i>	23
<i>Color Blindness Simulation</i>	26
<i>CSS Examples</i>	29

Color

Android(4290787946)

Conversions

Conversions Part 1

Format	Color
Hex	C03A6A
RGB	192, 58, 106
RGB Percent	75%, 23%, 42%
CMY	0.2471, 0.7725, 0.5843
CMYK	0.00, 0.70, 0.45, 0.25
HSL	339°, 54%, 49%
HSV	339°, 70%, 75%
XYZ	25.8528, 15.2732, 15.2211
YIQ	103.5380, 64.4560, 43.3360

Conversions

Conversions Part 2

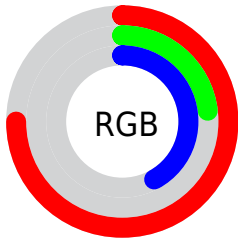
Format	Color
R_{YB}	192, 58, 106
Decimal	12597866
CIE _{Lab}	46.01, 56.69, 3.11
CIE _{LCh}	46, 56.779, 3.138
Yxy	15.2732, 0.4588, 0.2711
Android (android.graphics.Color)	4290787946 (0xFFC03A6A)
YUV	103.5380, 1.2138, 77.5812
Hunter-Lab	39.0809, 49.6897, 4.2646

Details

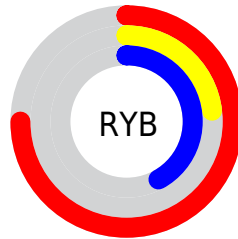
The Android color **4290787946** is a dark color, and the websafe version is hex **CC3366**. The color can be described as dark muted rose. A complement of this color would be **4282040464**, and the grayscale version is **4284966759**.

A 20% lighter version of the original color is **4294734493**, and **4286906427** is the 20% darker color. If you saturate the color by 10%, you get **4290783070**, and if you desaturate by 10%, it is **4290792822**.

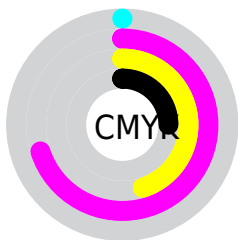
Distribution



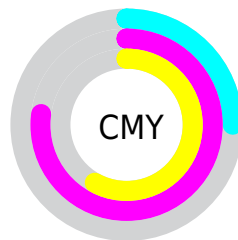
- Red (75%)
- Green (23%)
- Blue (42%)



- Red (75%)
- Yellow (23%)
- Blue (42%)



- Cyan (0%)
- Magenta (70%)
- Yellow (45%)
- Black (25%)



- Cyan (25%)
- Magenta (77%)
- Yellow (58%)

Brightness & Saturation Gradients

These gradients show how the Android color 4290787946 changes by changing the brightness by 10 percent. The first figure shows a shift by +10% for each color and the second figure -10%.

Similar to the brightness gradients but the following saturation gradients show a change of the Android color 4290787946 by changing the saturation by 10% instead.

 4290787946

 4290787946

4294967295

 4288813394

 4294734493

 4286906427

 4294938296

 4285071398

 4294945492

 4283170833

 4294952944

 4281466882

 4294960383

 4278190080

 4290787946

 4290787946

 4290783070

 4290792822

 4290778193

 4290797699

 4290773061

 4290802831

 4290807707

 4290812584

 4290817460

 4290822336

 4290827469

 4290832345

Harmonies

Analogous

The Analogous color harmony consists of three colors that are next to each other on the color wheel.



4289283993



4290787946



4290528572

Triad

The Triadic color harmony groups three colors that are evenly spaced from another and form a triangle on the color wheel.



4290787946



4283332878



4278222274

Complementary

The Complementary color scheme is a pair of colors which are on the opposite of each other on the color wheel.



4290787946



4282040464

Split Complementary

Split-complementary colors differ from the complementary color scheme. The scheme consists of three colors, the original color and two neighbors of the complement color.



4278223520



4290787946



4278222911

Square

The Square scheme is like the rectangle color scheme, but the four colors are evenly spaced on the color wheel.



4290787946



4286540800



4278223729



4278219212

Rectangle

The Rectangle color scheme consists of four colors that form a rectangle on the color wheel.



4290787946



4289614623



4278223729



4278222777

Sweetspot

The Sweet Spot groups the original color and five complimentary colors.



4290787946



4294624728



4287576768



4286406249



4294769916



4286414205

Same Dimension

The Same Dimension uses a secret algorithm to generate beautiful new colors.



4290787946



4294584435



4290792506



4284569435



4288741434



4280352780

Inverse Universe

The Inverse Universe completely reimagines the original color for something new.



4290787946



4294584435



4282035904



4284569435



4288741434



4280352780

Previews

White Background



This preview shows how the Android color 4290787946 looks on a white background.

Color Contrast Check

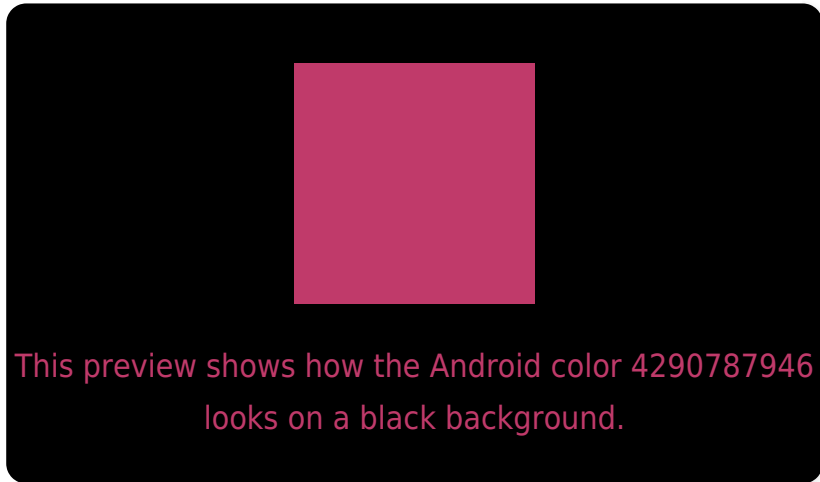
Large Text (above 18pt) WCAG AA ✓ Pass

Any Text WCAG AA ✓ Pass

Large Text (above 18pt) WCAG AAA ✓ Pass

Any Text WCAG AAA × Fail

Black Background



Color Contrast Check

Large Text (above 18pt) WCAG AA ✓ Pass

Any Text WCAG AA × Fail

Large Text (above 18pt) WCAG AAA × Fail

Any Text WCAG AAA × Fail

If you want to check with other color combinations, try the [Color Contrast Checker](#).

Android 4290787946 Background



This preview shows how black text looks on a background with the Android color 4290787946.

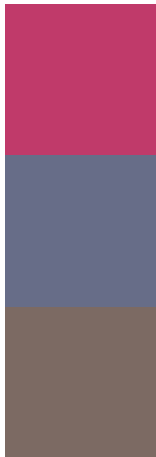


This preview shows how white text looks on a background with the Android color 4290787946.

Color Blindness Simulation

Color vision deficiency is a very complex topic, and I could not describe the different causes any better than Wikipedia does, so if you want to learn more, you should check out their [article about color blindness](#).

Dichromacy

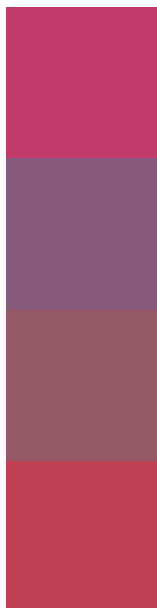


Original Color
4290787946

Protanopia
4284968328

Deuteranopia
4286343779

Trichromacy



Original Color

4290787946

Protanomaly

4287060605

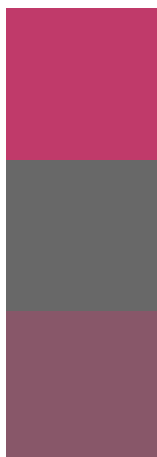
Deuteranomaly

4287977830

Tritanomaly

4290723667

Monochromacy



Original Color

4290787946

Achromatopsia

4285032552

Achromatomaly

4287125353

CSS Examples

Text

The CSS property to change the color of the text to Android 4290787946 is called "color". The color property can be set on classes, ids or directly on the HTML element.

This example shows how text in the color `rgb(192, 58, 106)` looks like.

```
.text, #text, p{  
    color:rgb(192, 58, 106)  
}
```

If you want to add a text shadow in that color use the text-shadow property, you can generate a text shadow directly with our [CSS Text Shadow Generator](#).

Here you see how black text with a 4 pixel rgb(192, 58, 106) colored shadow looks like.

```
.shadow{ text-shadow: 4px 4px 2px rgb(192, 58, 106) }
```

Border

The CSS property to change the border of an element to Android 4290787946 is called "border". The border property can be set on classes, ids or directly on the HTML element.

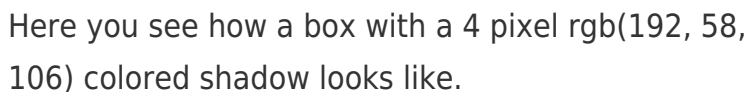
This example shows the color as border, it can be applied via the CSS property "border" or "border-color".

```
.border, #border, table{ border:4px solid rgb(192, 58, 106) }
```

If only the border color should be changed use the property `border-color`.

```
.border{ border-color:rgb(192, 58, 106) }
```

If you want to add a box shadow in that color use:



Here you see how a box with a 4 pixel `rgb(192, 58, 106)` colored shadow looks like.

```
.boxshadow{ -moz-box-shadow:4px 4px 4px  
4px rgb(192, 58, 106); -webkit-box-  
shadow:4px 4px 4px 4px rgb(192, 58, 106);  
box-shadow:4px 4px 4px 4px rgb(192, 58,  
106) }
```

Background

The CSS property to change the background color of an element to Android 4290787946 is called "background". The background property can be set on classes, ids or directly on the HTML element.

```
.background, #background, body{  
background: rgb(192, 58, 106) }
```

If only the background color should be changed can be used:

```
.background{ background-color: rgb(192, 58,  
106) }
```

This example shows the color as background, it is applied via the CSS property "background".

To optimize and compress your CSS code, you can use our [online CSS compressor and optimizer](#) based on csstidy. If you want to create a linear or radial gradient as background or border, check our [CSS Gradient Generator](#).

Hey! You found this booklet interesting? Support Converting Colors with the new Membership Option!

The pro membership hides all ads, plus gives you double the colors in the color bucket, and more awesome pro features!

[Learn more, Memberships starting at \\$2.50/m!](#)

**Follow me
on Twitter!**

@ConvertingColor