

Converting Colors

Android(4290812282)

Have a look what the booklet for
Android(4290812282) contains.

Android(4290812282)	3
<i>Conversions</i>	4
<i>Details</i>	6
<i>Harmonies</i>	11
<i>Previews</i>	23
<i>Color Blindness Simulation</i>	26
<i>CSS Examples</i>	29

Color

Android(4290812282)

Conversions

Conversions Part 1

Format	Color
Hex	C0997A
RGB	192, 153, 122
RGB Percent	75%, 60%, 48%
CMY	0.2471, 0.4000, 0.5216
CMYK	0.00, 0.20, 0.36, 0.25
HSL	27°, 36%, 62%
HSV	27°, 36%, 75%
XYZ	36.6423, 35.3941, 23.3128
YIQ	161.1270, 33.1950, -1.3730

Conversions

Conversions Part 2

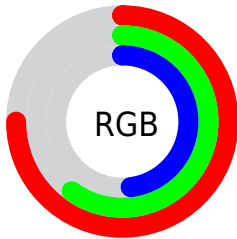
Format	Color
RYB	192, 178, 122
Decimal	12622202
CIELab	66.05, 10.22, 21.82
CIELCh	66, 24.099, 64.907
Yxy	35.3941, 0.3843, 0.3712
Android (android.graphics.Color)	4290812282 (0xFFC0997A)
YUV	161.1270, -19.2896, 27.0756
Hunter-Lab	59.4929, 5.8274, 18.4117

Details

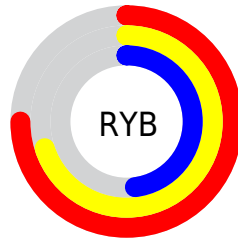
The Android color `4290812282` is a light color, and the websafe version is hex `CC9966`. A complement of this color would be `4286226880`, and the grayscale version is `4288782753`.

A 20% lighter version of the original color is `4294627247`, and `4287194697` is the 20% darker color. If you saturate the color by 10%, you get `4290809447`, and if you desaturate by 10%, it is `4290815117`.

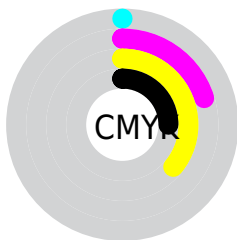
Distribution



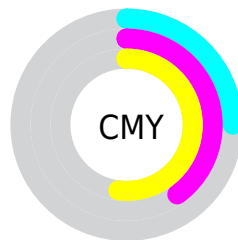
- Red (75%)
- Green (60%)
- Blue (48%)



- Red (75%)
- Yellow (70%)
- Blue (48%)



- Cyan (0%)
- Magenta (20%)
- Yellow (36%)
- Black (25%)



- Cyan (25%)
- Magenta (40%)
- Yellow (52%)

Brightness & Saturation Gradients

These gradients show how the Android color 4290812282 changes by changing the brightness by 10 percent. The first figure shows a shift by +10% for each color and the second figure -10%.

Similar to the brightness gradients but the following saturation gradients show a change of the Android color 4290812282 by changing the saturation by 10% instead.

 4290812282

 4290812282

4294967295

 4288970593

 4294627247

 4287194697

 4294962378

 4285484594

 4294967270

 4283774749

 4282196485

 4280618240

 4278190080

 4290812282

 4290812282

 4290809447

 4290815117

 4290806868

 4290817696

 4290804032

 4290820532

 4290801197

 4290823367

 4290798618

 4290825946

 4290795783

 4290828781

 4290794752

 4290831615

 4290834431

 4290836991

Harmonies

Analogous

The Analogous color harmony consists of three colors that are next to each other on the color wheel.



4291531657



4290812282



4289568885

Triad

The Triadic color harmony groups three colors that are evenly spaced from another and form a triangle on the color wheel.



4290812282



4285050275



4289305284

Complementary

The Complementary color scheme is a pair of colors which are on the opposite of each other on the color wheel.



4290812282



4286226880

Split Complementary

Split-complementary colors differ from the complementary color scheme. The scheme consists of three colors, the original color and two neighbors of the complement color.



4287341003



4290812282



4284591288

Square

The Square scheme is like the rectangle color scheme, but the four colors are evenly spaced on the color wheel.



4290812282



4286360462



4285507783



4290745267

Rectangle

The Rectangle color scheme consists of four colors that form a rectangle on the color wheel.



4290812282



4288521593



4285507783



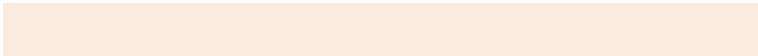
4288650440

Sweetspot

The Sweet Spot groups the original color and five complimentary colors.



4290812282



4294634462



4290804386



4286411885



4294769916



4286414205

Same Dimension

The Same Dimension uses a secret algorithm to generate beautiful new colors.



4290812282



4294622604



4290820986



4284570711



4288759552



4280356608

Inverse Universe

The Inverse Universe completely reimagines the original color for something new.



4286226880



4287416826



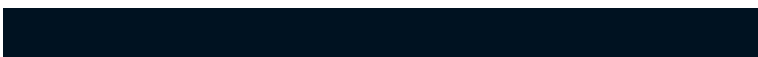
4286218176



4283915617



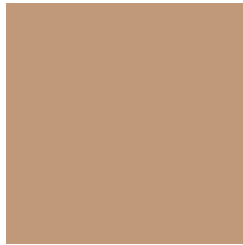
4278213281



4278194721

Previews

White Background



This preview shows how the Android color 4290812282 looks on a white background.

Color Contrast Check

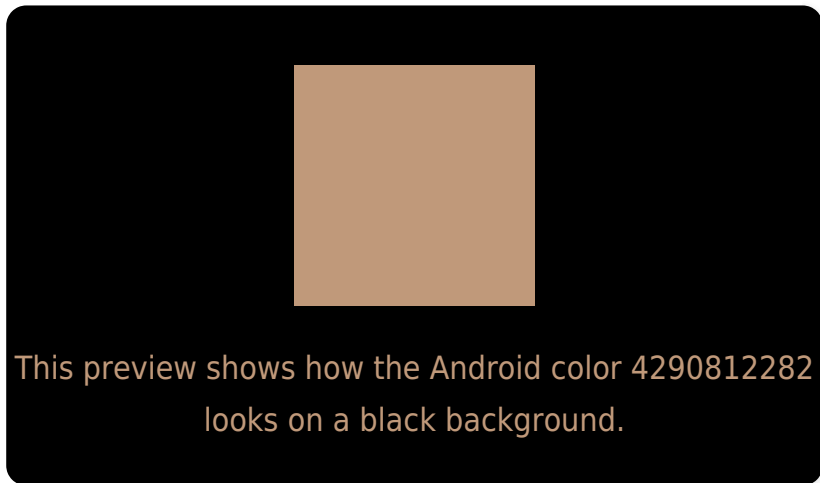
Large Text (above 18pt) WCAG AA × Fail

Any Text WCAG AA × Fail

Large Text (above 18pt) WCAG AAA × Fail

Any Text WCAG AAA × Fail

Black Background



Color Contrast Check

Large Text (above 18pt) WCAG AA ✓ Pass

Any Text WCAG AA ✓ Pass

Large Text (above 18pt) WCAG AAA ✓ Pass

Any Text WCAG AAA ✓ Pass

If you want to check with other color combinations, try the [Color Contrast Checker](#).

Android 4290812282 Background



This preview shows how black text looks on a background with the Android color 4290812282.



This preview shows how white text looks on a background with the Android color 4290812282.

Color Blindness Simulation

Color vision deficiency is a very complex topic, and I could not describe the different causes any better than Wikipedia does, so if you want to learn more, you should check out their [article about color blindness](#).


Dichromacy



Original Color
4290812282

Protanopia
4289437821

Deuteranopia
4290615930



Tritanopia
4291073183

Trichromacy



Original Color
4290812282

Protanomaly
4289961340

Deuteranomaly
4290681466

Tritanomaly
4291008146

Monochromacy



Original Color
4290812282

Achromatopsia
4288782753

Achromatomaly
4289502867

CSS Examples

Text

The CSS property to change the color of the text to Android 4290812282 is called "color". The color property can be set on classes, ids or directly on the HTML element.

This example shows how text in the color `rgb(192, 153, 122)` looks like.

```
.text, #text, p{  
    color:rgb(192, 153, 122)  
}
```

If you want to add a text shadow in that color use the text-shadow property, you can generate a text shadow directly with our [CSS Text Shadow Generator](#).

Here you see how black text with a 4 pixel rgb(192, 153, 122) colored shadow looks like.

```
.shadow{ text-shadow: 4px 4px 2px rgb(192, 153, 122) }
```

Border

The CSS property to change the border of an element to Android 4290812282 is called "border". The border property can be set on classes, ids or directly on the HTML element.

This example shows the color as border, it can be applied via the CSS property "border" or "border-color".

```
.border, #border, table{ border:4px solid rgb(192, 153, 122) }
```

If only the border color should be changed use the property `border-color`.

```
.border{ border-color:rgb(192, 153, 122) }
```

If you want to add a box shadow in that color use:

Here you see how a box with a 4 pixel `rgb(192, 153, 122)` colored shadow looks like.

```
.boxshadow{ -moz-box-shadow:4px 4px 4px  
4px rgb(192, 153, 122); -webkit-box-  
shadow:4px 4px 4px 4px rgb(192, 153, 122);  
box-shadow:4px 4px 4px 4px rgb(192, 153,  
122) }
```

Background

The CSS property to change the background color of an element to Android 4290812282 is called "background". The background property can be set on classes, ids or directly on the HTML element.

```
.background, #background, body{  
background: rgb(192, 153, 122) }
```

If only the background color should be changed can be used:

```
.background{ background-color: rgb(192,  
153, 122) }
```

This example shows the color as background, it is applied via the CSS property "background".

To optimize and compress your CSS code, you can use our [online CSS compressor and optimizer](#) based on csstidy. If you want to create a linear or radial gradient as background or border, check our [CSS Gradient Generator](#).

Hey! You found this booklet interesting? Support Converting Colors with the new Membership Option!

The pro membership hides all ads, plus gives you double the colors in the color bucket, and more awesome pro features!

[Learn more, Memberships starting at \\$2.50/m!](#)

**Follow me
on Twitter!**

@ConvertingColor