

# Converting Colors

Android(4290813595)

Have a look what the booklet for  
Android(4290813595) contains.

<b>Android(4290813595)</b> .....	3
<b><i>Conversions</i></b> .....	4
<b><i>Details</i></b> .....	6
<b><i>Harmonies</i></b> .....	11
<b><i>Previews</i></b> .....	23
<b><i>Color Blindness Simulation</i></b> .....	26
<b><i>CSS Examples</i></b> .....	29

# **Color**

**Android(4290813595)**

# Conversions

## Conversions Part 1

<b>Format</b>	<b>Color</b>
Hex	C09E9B
RGB	192, 158, 155
RGB Percent	75%, 62%, 61%
CMY	0.2471, 0.3804, 0.3922
CMYK	0.00, 0.18, 0.19, 0.25
HSL	5°, 23%, 68%
HSV	5°, 19%, 75%
XYZ	39.8815, 38.0267, 36.2483
YIQ	167.8240, 21.2270, 6.2750

# Conversions

## Conversions Part 2

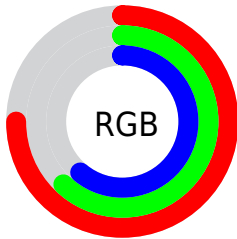
<b>Format</b>	<b>Color</b>
<b>R<sub>YB</sub></b>	192, 158, 155
Decimal	12623515
CIE <sub>Lab</sub>	68.04, 12.08, 6.28
CIE <sub>LCh</sub>	68, 13.618, 27.479
Yxy	38.0267, 0.3494, 0.3331
Android (android.graphics.Color)	4290813595 (0xFFC09E9B)
YUV	167.8240, -6.3222, 21.2024
Hunter-Lab	61.6658, 7.5271, 8.3144

# Details

The Android color `4290813595` is a light color, and the websafe version is hex `CC9999`. A complement of this color would be `4288396736`, and the grayscale version is `4289243304`.

A 20% lighter version of the original color is `4294563281`, and `4287261544` is the 20% darker color. If you saturate the color by 10%, you get `4290808968`, and if you desaturate by 10%, it is `4290818222`.

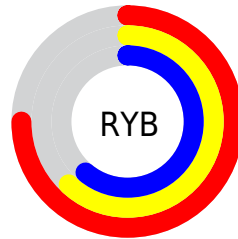
# Distribution



Red (75%)

Green (62%)

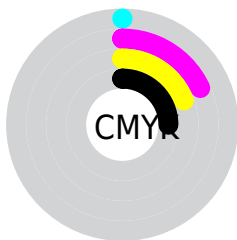
Blue (61%)



Red (75%)

Yellow (62%)

Blue (61%)

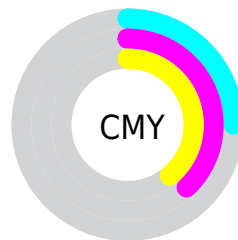


Cyan (0%)

Magenta (18%)

Yellow (19%)

Black (25%)



Cyan (25%)

Magenta (38%)

Yellow (39%)

# Brightness & Saturation Gradients

These gradients show how the Android color 4290813595 changes by changing the brightness by 10 percent. The first figure shows a shift by +10% for each color and the second figure -10%.

Similar to the brightness gradients but the following saturation gradients show a change of the Android color 4290813595 by changing the saturation by 10% instead.



 4290813595

 4290813595

4294967295

 4289037441

 4294563281

 4287261544

 4294963694

 4285551184

 4283906873

 4282328356

 4280881422

 4278779904

 4278190080

 4290813595

 4290813595

 4290808968

 4290818222

 4290804597

 4290822593

 4290799969

 4290827221

 4290795342

 4290831848

 4290790971

 4290836219

 4290786344

 4290838527

 4290781717

 4290777345

 4290777088

# Harmonies

## Analogous

The Analogous color harmony consists of three colors that are next to each other on the color wheel.



4290682535



4290813595



4290486674

# Triad

The Triadic color harmony groups three colors that are evenly spaced from another and form a triangle on the color wheel.



4290813595



4287999128



4288128958

# Complementary

The Complementary color scheme is a pair of colors which are on the opposite of each other on the color wheel.



4290813595



4288396736

# Split Complementary

Split-complementary colors differ from the complementary color scheme. The scheme consists of three colors, the original color and two neighbors of the complement color.



4287343546



4290813595



4287278500

# Square

The Square scheme is like the rectangle color scheme, but the four colors are evenly spaced on the color wheel.



4290813595



4288915856



4287016369



4289176508

# Rectangle

The Rectangle color scheme consists of four colors that form a rectangle on the color wheel.



4290813595



4290093966



4287016369



4287867069

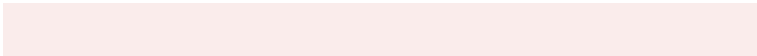


# Sweetspot

The Sweet Spot groups the original color and five complimentary colors.



4290813595



4294634731



4290812862



4286412148



4294769916



4286414205



# Same Dimension

The Same Dimension uses a secret algorithm to generate beautiful new colors.



4290813595



4294624704



4290818203



4284569687



4288744704



4280353536



# Inverse Universe

The Inverse Universe completely reimagines the original color for something new.



4288396736



4290835962



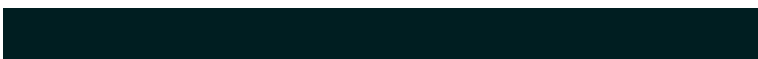
4288392128



4283916385



4278228129

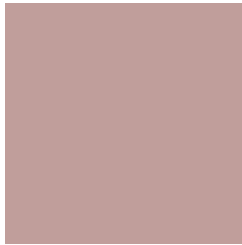


4278197793



# Previews

## White Background



This preview shows how the Android color 4290813595 looks on a white background.

## Color Contrast Check

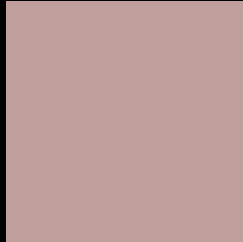
Large Text (above 18pt) WCAG AA × Fail

Any Text WCAG AA × Fail

Large Text (above 18pt) WCAG AAA × Fail

Any Text WCAG AAA × Fail

# Black Background



This preview shows how the Android color 4290813595 looks on a black background.

## Color Contrast Check

Large Text (above 18pt) WCAG AA ✓ Pass

Any Text WCAG AA ✓ Pass

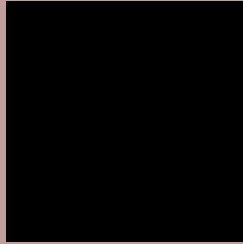
Large Text (above 18pt) WCAG AAA ✓ Pass

Any Text WCAG AAA ✓ Pass

If you want to check with other color combinations, try the [Color Contrast Checker](#).



# Android 4290813595 Background



This preview shows how black text looks on a background with the Android color 4290813595.



This preview shows how white text looks on a background with the Android color 4290813595.

# Color Blindness Simulation

Color vision deficiency is a very complex topic, and I could not describe the different causes any better than Wikipedia does, so if you want to learn more, you should check out their [article about color blindness](#).

## Dichromacy



**Original Color**  
4290813595

**Protanopia**  
4289439135

**Deuteranopia**  
4290420891



**Tritanopia**  
4290944168

# Trichromacy



**Original Color**  
4290813595

**Protanomaly**  
4289962654

**Deuteranomaly**  
4290551707

**Tritanomaly**  
4290878883

# Monochromacy



**Original Color**  
4290813595

**Achromatopsia**  
4289243304

**Achromatomaly**  
4289832099

# CSS Examples

## Text

The CSS property to change the color of the text to Android 4290813595 is called "color". The color property can be set on classes, ids or directly on the HTML element.

This example shows how text in the color `rgb(192, 158, 155)` looks like.

```
.text, #text, p{  
    color:rgb(192, 158, 155)  
}
```

If you want to add a text shadow in that color use the text-shadow property, you can generate a text shadow directly with our [CSS Text Shadow Generator](#).

Here you see how black text with a 4 pixel rgb(192, 158, 155) colored shadow looks like.

```
.shadow{ text-shadow: 4px 4px 2px rgb(192, 158, 155) }
```

## Border

The CSS property to change the border of an element to Android 4290813595 is called "border". The border property can be set on classes, ids or directly on the HTML element.

This example shows the color as border, it can be applied via the CSS property "border" or "border-color".

```
.border, #border, table{ border:4px solid rgb(192, 158, 155) }
```

If only the border color should be changed use the property `border-color`.

```
.border{ border-color:rgb(192, 158, 155) }
```

If you want to add a box shadow in that color use:

Here you see how a box with a 4 pixel `rgb(192, 158, 155)` colored shadow looks like.

```
.boxshadow{ -moz-box-shadow:4px 4px 4px  
4px rgb(192, 158, 155); -webkit-box-  
shadow:4px 4px 4px 4px rgb(192, 158, 155);  
box-shadow:4px 4px 4px 4px rgb(192, 158,  
155) }
```

# Background

The CSS property to change the background color of an element to Android 4290813595 is called "background". The background property can be set on classes, ids or directly on the HTML element.

```
.background, #background, body{  
background: rgb(192, 158, 155) }
```

If only the background color should be changed can be used:

```
.background{ background-color: rgb(192,  
158, 155) }
```

This example shows the color as background, it is applied via the CSS property "background".

To optimize and compress your CSS code, you can use our [online CSS compressor and optimizer](#) based on csstidy. If you want to create a linear or radial gradient as background or border, check our [CSS Gradient Generator](#).



Hey! You found this booklet interesting? Support Converting Colors with the new Membership Option!

The pro membership hides all ads, plus gives you double the colors in the color bucket, and more awesome pro features!

**[Learn more, Memberships starting at \\$2.50/m!](#)**

**Follow me  
on Twitter!**

@ConvertingColor