

# Converting Colors

Android(4290817423)

Have a look what the booklet for  
Android(4290817423) contains.

<b>Android(4290817423)</b> .....	3
<b><i>Conversions</i></b> .....	4
<b><i>Details</i></b> .....	6
<b><i>Harmonies</i></b> .....	11
<b><i>Previews</i></b> .....	23
<b><i>Color Blindness Simulation</i></b> .....	26
<b><i>CSS Examples</i></b> .....	29

# **Color**

**Android(4290817423)**

# Conversions

## Conversions Part 1

<b>Format</b>	<b>Color</b>
Hex	C0AD8F
RGB	192, 173, 143
RGB Percent	75%, 68%, 56%
CMY	0.2471, 0.3216, 0.4392
CMYK	0.00, 0.10, 0.26, 0.25
HSL	37°, 28%, 66%
HSV	37°, 26%, 75%
XYZ	41.6397, 43.0768, 32.1066
YIQ	175.2610, 20.9540, -5.3020

# Conversions

## Conversions Part 2

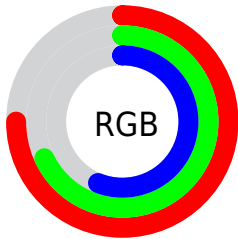
Format	Color
<b>RYB</b>	174, 192, 143
Decimal	12627343
CIELab	71.61, 2.13, 17.93
CIELCh	72, 18.053, 83.226
Yxy	43.0768, 0.3564, 0.3687
Android (android.graphics.Color)	4290817423 (0xFFC0AD8F)
YUV	175.2610, -15.9047, 14.6801
Hunter-Lab	65.6329, -1.6112, 16.9393

# Details

The Android color `4290817423` is a light color, and the websafe version is hex `CCCC99`. A complement of this color would be `4287603392`, and the grayscale version is `4289703855`.

A 20% lighter version of the original color is `4294567109`, and `4287265117` is the 20% darker color. If you saturate the color by 10%, you get `4290815612`, and if you desaturate by 10%, it is `4290819234`.

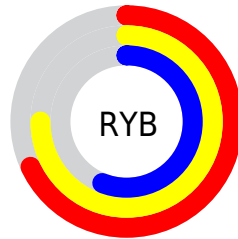
# Distribution



Red (75%)

Green (68%)

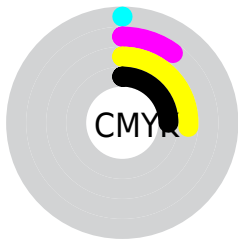
Blue (56%)



Red (68%)

Yellow (75%)

Blue (56%)

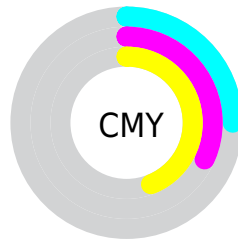


Cyan (0%)

Magenta (10%)

Yellow (26%)

Black (25%)



Cyan (25%)

Magenta (32%)

Yellow (44%)

# Brightness & Saturation Gradients

These gradients show how the Android color 4290817423 changes by changing the brightness by 10 percent. The first figure shows a shift by +10% for each color and the second figure -10%.

Similar to the brightness gradients but the following saturation gradients show a change of the Android color 4290817423 by changing the saturation by 10% instead.





4290817423



4290817423

4294967295



4289041013



4294567109



4287265117



4294967265



4285554757

4294967294



4283910190



4282331673



4280884480



4279108608



4278190080



4290817423



4290817423

■ 4290815612

■ 4290819234

■ 4290813545

■ 4290821301

■ 4290811733

■ 4290823113

■ 4290809666

■ 4290825180

■ 4290807855

■ 4290826991

■ 4290805788

■ 4290829055

■ 4290803977

■ 4290830847

■ 4290803200

■ 4290832895

■ 4290834687

# Harmonies

## Analogous

The Analogous color harmony consists of three colors that are next to each other on the color wheel.



4291668118



4290817423



4289704593

# Triad

The Triadic color harmony groups three colors that are evenly spaced from another and form a triangle on the color wheel.



4290817423



4286822844



4290881475

# Complementary

The Complementary color scheme is a pair of colors which are on the opposite of each other on the color wheel.



4290817423



4287603392

# Split Complementary

Split-complementary colors differ from the complementary color scheme. The scheme consists of three colors, the original color and two neighbors of the complement color.



4289637582



4290817423



4287149769

# Square

The Square scheme is like the rectangle color scheme, but the four colors are evenly spaced on the color wheel.



4290817423



4287412651



4288197328



4291732660

# Rectangle

The Rectangle color scheme consists of four colors that form a rectangle on the color wheel.



4290817423



4288853399



4288197328



4290488775

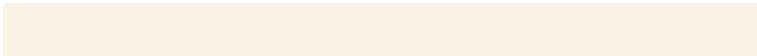


# Sweetspot

The Sweet Spot groups the original color and five complimentary colors.



4290817423



4294636262



4290809763



4286412912



4294769916



4286414205



# Same Dimension

The Same Dimension uses a secret algorithm to generate beautiful new colors.



4290817423



4294630572



4290494607



4284570967



4288766464



4280357888



# Inverse Universe

The Inverse Universe completely reimagines the original color for something new.



4287603392



4289514234



4287926208



4283915105



4278206113

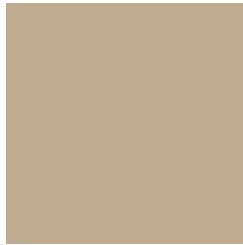


4278193441



# Previews

## White Background



This preview shows how the Android color 4290817423 looks on a white background.

## Color Contrast Check

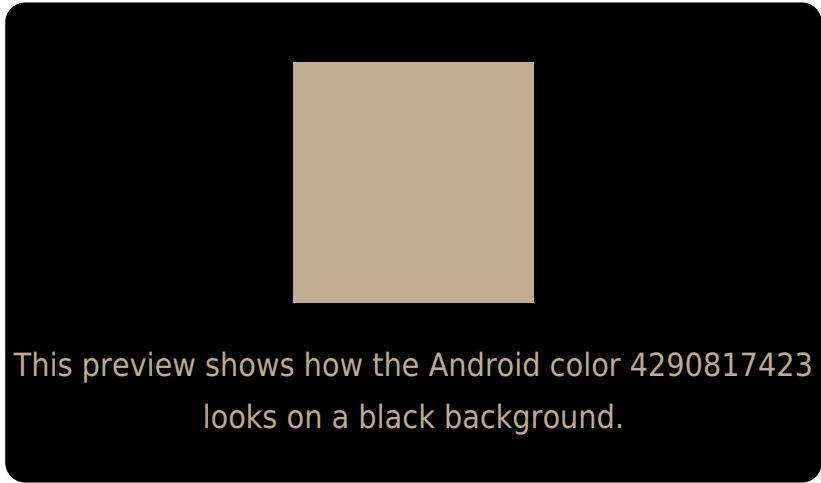
Large Text (above 18pt) WCAG AA × Fail

Any Text WCAG AA × Fail

Large Text (above 18pt) WCAG AAA × Fail

Any Text WCAG AAA × Fail

# Black Background



## Color Contrast Check

Large Text (above 18pt) WCAG AA ✓ Pass

Any Text WCAG AA ✓ Pass

Large Text (above 18pt) WCAG AAA ✓ Pass

Any Text WCAG AAA ✓ Pass

If you want to check with other color combinations, try the [Color Contrast Checker](#).



# Android 4290817423 Background



This preview shows how black text looks on a background with the Android color 4290817423.



This preview shows how white text looks on a background with the Android color 4290817423.

# Color Blindness Simulation

Color vision deficiency is a very complex topic, and I could not describe the different causes any better than Wikipedia does, so if you want to learn more, you should check out their [article about color blindness](#).


## Dichromacy



**Original Color**  
4290817423

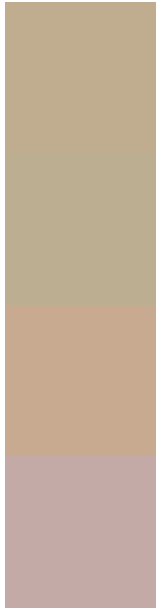
**Protanopia**  
4290424720

**Deuteranopia**  
4291537296



**Tritanopia**  
4291143861

# Trichromacy



**Original Color**  
4290817423

**Protanomaly**  
4290555536

**Deuteranomaly**  
4291275408

**Tritanomaly**  
4291013287

# Monochromacy



**Original Color**  
4290817423

**Achromatopsia**  
4289703855

**Achromatomaly**  
4290096803

# CSS Examples

## Text

The CSS property to change the color of the text to Android 4290817423 is called "color". The color property can be set on classes, ids or directly on the HTML element.

This example shows how text in the color `rgb(192, 173, 143)` looks like.

```
.text, #text, p{  
    color:rgb(192, 173, 143)  
}
```

If you want to add a text shadow in that color use the text-shadow property, you can generate a text shadow directly with our [CSS Text Shadow Generator](#).

Here you see how black text with a 4 pixel rgb(192, 173, 143) colored shadow looks like.

```
.shadow{ text-shadow: 4px 4px 2px rgb(192, 173, 143) }
```

## Border

The CSS property to change the border of an element to Android 4290817423 is called "border". The border property can be set on classes, ids or directly on the HTML element.

This example shows the color as border, it can be applied via the CSS property "border" or "border-color".

```
.border, #border, table{ border:4px solid rgb(192, 173, 143) }
```

If only the border color should be changed use the property `border-color`.

```
.border{ border-color:rgb(192, 173, 143) }
```

If you want to add a box shadow in that color use:

Here you see how a box with a 4 pixel `rgb(192, 173, 143)` colored shadow looks like.

```
.boxshadow{ -moz-box-shadow:4px 4px 4px  
4px rgb(192, 173, 143); -webkit-box-  
shadow:4px 4px 4px 4px rgb(192, 173, 143);  
box-shadow:4px 4px 4px 4px rgb(192, 173,  
143) }
```

# Background

The CSS property to change the background color of an element to Android 4290817423 is called "background". The background property can be set on classes, ids or directly on the HTML element.

```
.background, #background, body{  
background: rgb(192, 173, 143) }
```

If only the background color should be changed can be used:

```
.background{ background-color: rgb(192,  
173, 143) }
```

This example shows the color as background, it is applied via the CSS property "background".

To optimize and compress your CSS code, you can use our [online CSS compressor and optimizer](#) based on csstidy. If you want to create a linear or radial gradient as background or border, check our [CSS Gradient Generator](#).



Hey! You found this booklet interesting? Support Converting Colors with the new Membership Option!

The pro membership hides all ads, plus gives you double the colors in the color bucket, and more awesome pro features!

**[Learn more, Memberships starting at \\$2.50/m!](#)**

**Follow me  
on Twitter!**

@ConvertingColor