

Converting Colors

Android(4290861959)

Have a look what the booklet for
Android(4290861959) contains.

Android(4290861959)	3
<i>Conversions</i>	4
<i>Details</i>	6
<i>Harmonies</i>	11
<i>Previews</i>	23
<i>Color Blindness Simulation</i>	26
<i>CSS Examples</i>	29

Color

Android(4290861959)

Conversions

Conversions Part 1

Format	Color
Hex	C15B87
RGB	193, 91, 135
RGB Percent	76%, 36%, 53%
CMY	0.2431, 0.6431, 0.4706
CMYK	0.00, 0.53, 0.30, 0.24
HSL	334°, 45%, 56%
HSV	334°, 53%, 76%
XYZ	30.1066, 20.5689, 25.3051
YIQ	126.5140, 46.6680, 35.3080

Conversions

Conversions Part 2

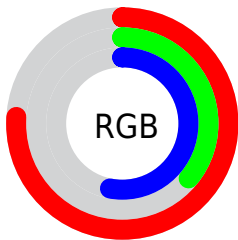
Format	Color
RYB	193, 91, 135
Decimal	12671879
CIELab	52.47, 45.69, -4.91
CIELCh	52, 45.949, 353.872
Yxy	20.5689, 0.3962, 0.2707
Android (android.graphics.Color)	4290861959 (0xFFC15B87)
YUV	126.5140, 4.1836, 58.3082
Hunter-Lab	45.3529, 39.1257, -1.3343

Details

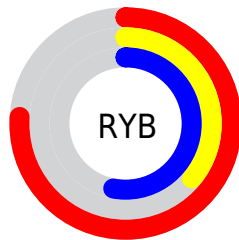
The Android color **4290861959** is a dark color, and the websafe version is hex **CC6699**. The color can be described as middle muted rose. A complement of this color would be **4284203413**, and the grayscale version is **4286479998**.

A 20% lighter version of the original color is **4294742204**, and **4287112789** is the 20% darker color. If you saturate the color by 10%, you get **4290857084**, and if you desaturate by 10%, it is **4290866834**.

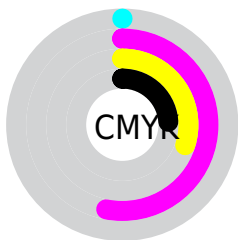
Distribution



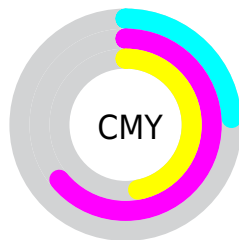
- Red (76%)
- Green (36%)
- Blue (53%)



- Red (76%)
- Yellow (36%)
- Blue (53%)



- Cyan (0%)
- Magenta (53%)
- Yellow (30%)
- Black (24%)



- Cyan (24%)
- Magenta (64%)
- Yellow (47%)

Brightness & Saturation Gradients

These gradients show how the Android color 4290861959 changes by changing the brightness by 10 percent. The first figure shows a shift by +10% for each color and the second figure -10%.

Similar to the brightness gradients but the following saturation gradients show a change of the Android color 4290861959 by changing the saturation by 10% instead.

 4290861959

 4290861959

4294967295

 4288954734

 4294742204

 4287112789

 4294946008

 4285334334

 4294953204

 4283564072

 4294960639

 4281925652

 4279894017

 4278190080

 4290861959

 4290861959

 4290857084

 4290866834

 4290851953

 4290871965

 4290847078

 4290876840

 4290842203

 4290881715

 4290838611

 4290886590

 4290891721

 4290896596

 4290901471

 4290904042

Harmonies

Analogous

The Analogous color harmony consists of three colors that are next to each other on the color wheel.



4289095340



4290861959



4291124576

Triad

The Triadic color harmony groups three colors that are evenly spaced from another and form a triangle on the color wheel.



4290861959



4285826097



4278226364

Complementary

The Complementary color scheme is a pair of colors which are on the opposite of each other on the color wheel.



4290861959



4284203413

Split Complementary

Split-complementary colors differ from the complementary color scheme. The scheme consists of three colors, the original color and two neighbors of the complement color.



4278227100



4290861959



4282616909

Square

The Square scheme is like the rectangle color scheme, but the four colors are evenly spaced on the color wheel.



4290861959



4288313387



4278227060



4278224075

Rectangle

The Rectangle color scheme consists of four colors that form a rectangle on the color wheel.



4290861959



4290667848



4278227060



4278226611

Sweetspot

The Sweet Spot groups the original color and five complimentary colors.



4290861959



4294628067



4287978433



4286408047



4294769916



4286414205

Same Dimension

The Same Dimension uses a secret algorithm to generate beautiful new colors.



4290861959



4294597792



4290863707



4284569435



4288741445



4280352782

Inverse Universe

The Inverse Universe completely reimagines the original color for something new.



4290861959



4294597792



4284201665



4284569435



4288741445



4280352782

Previews

White Background



This preview shows how the Android color 4290861959 looks on a white background.

Color Contrast Check

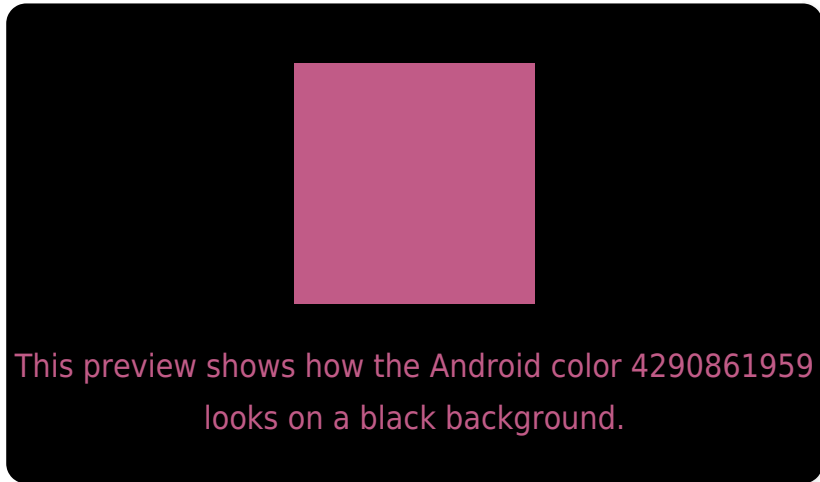
Large Text (above 18pt) WCAG AA ✓ Pass

Any Text WCAG AA ✗ Fail

Large Text (above 18pt) WCAG AAA ✗ Fail

Any Text WCAG AAA ✗ Fail

Black Background



Color Contrast Check

Large Text (above 18pt) WCAG AA ✓ Pass

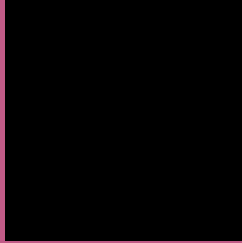
Any Text WCAG AA ✓ Pass

Large Text (above 18pt) WCAG AAA ✓ Pass

Any Text WCAG AAA × Fail

If you want to check with other color combinations, try the [Color Contrast Checker](#).

Android 4290861959 Background



This preview shows how black text looks on a background with the Android color 4290861959.



This preview shows how white text looks on a background with the Android color 4290861959.

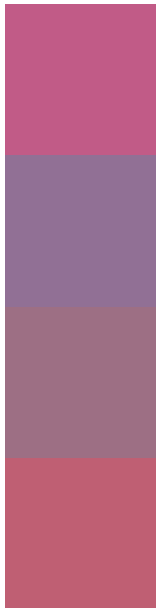
Color Blindness Simulation

Color vision deficiency is a very complex topic, and I could not describe the different causes any better than Wikipedia does, so if you want to learn more, you should check out their [article about color blindness](#).

Dichromacy



Trichromacy



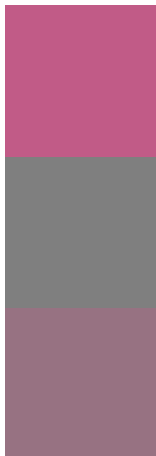
Original Color
4290861959

Protanomaly
4287721621

Deuteranomaly
4288507780

Tritanomaly
4290731891

Monochromacy



Original Color
4290861959

Achromatopsia
4286545791

Achromatomaly
4288115330

CSS Examples

Text

The CSS property to change the color of the text to Android 4290861959 is called "color". The color property can be set on classes, ids or directly on the HTML element.

This example shows how text in the color `rgb(193, 91, 135)` looks like.

```
.text, #text, p{  
    color:rgb(193, 91, 135)  
}
```

If you want to add a text shadow in that color use the text-shadow property, you can generate a text shadow directly with our [CSS Text Shadow Generator](#).

Here you see how black text with a 4 pixel rgb(193, 91, 135) colored shadow looks like.

```
.shadow{ text-shadow: 4px 4px 2px rgb(193, 91, 135) }
```

Border

The CSS property to change the border of an element to Android 4290861959 is called "border". The border property can be set on classes, ids or directly on the HTML element.

This example shows the color as border, it can be applied via the CSS property "border" or "border-color".

```
.border, #border, table{ border:4px solid rgb(193, 91, 135) }
```

If only the border color should be changed use the property `border-color`.

```
.border{ border-color:rgb(193, 91, 135) }
```

If you want to add a box shadow in that color use:

Here you see how a box with a 4 pixel `rgb(193, 91, 135)` colored shadow looks like.

```
.boxshadow{ -moz-box-shadow:4px 4px 4px  
4px rgb(193, 91, 135); -webkit-box-  
shadow:4px 4px 4px 4px rgb(193, 91, 135);  
box-shadow:4px 4px 4px 4px rgb(193, 91,  
135) }
```

Background

The CSS property to change the background color of an element to Android 4290861959 is called "background". The background property can be set on classes, ids or directly on the HTML element.

```
.background, #background, body{  
background: rgb(193, 91, 135) }
```

If only the background color should be changed can be used:

```
.background{ background-color: rgb(193, 91,  
135) }
```

This example shows the color as background, it is applied via the CSS property "background".

To optimize and compress your CSS code, you can use our [online CSS compressor and optimizer](#) based on csstidy. If you want to create a linear or radial gradient as background or border, check our [CSS Gradient Generator](#).

Hey! You found this booklet interesting? Support Converting Colors with the new Membership Option!

The pro membership hides all ads, plus gives you double the colors in the color bucket, and more awesome pro features!

[Learn more, Memberships starting at \\$2.50/m!](#)

**Follow me
on Twitter!**

@ConvertingColor