

Converting Colors

Android(4290869623)

Have a look what the booklet for
Android(4290869623) contains.

Android(4290869623)	3
<i>Conversions</i>	4
<i>Details</i>	6
<i>Harmonies</i>	11
<i>Previews</i>	23
<i>Color Blindness Simulation</i>	26
<i>CSS Examples</i>	29

Color

Android(4290869623)

Conversions

Conversions Part 1

Format	Color
Hex	C17977
RGB	193, 121, 119
RGB Percent	76%, 47%, 47%
CMY	0.2431, 0.5255, 0.5333
CMYK	0.00, 0.37, 0.38, 0.24
HSL	2°, 37%, 61%
HSV	2°, 38%, 76%
XYZ	32.1595, 26.3441, 20.8427
YIQ	142.3000, 43.5540, 14.6420

Conversions

Conversions Part 2

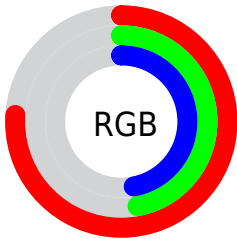
Format	Color
R _Y B	193, 121, 119
Decimal	12679543
CIE Lab	58.36, 27.89, 12.95
CIE LCh	58, 30.744, 24.904
Yxy	26.3441, 0.4053, 0.3320
Android (android.graphics.Color)	4290869623 (0xFFC17977)
YUV	142.3000, -11.4869, 44.4639
Hunter-Lab	51.3265, 22.0207, 11.8520

Details

The Android color **4290869623** is a dark color, and the websafe version is hex **996666**. A complement of this color would be **4286037953**, and the grayscale version is **4287532686**.

A 20% lighter version of the original color is **4294684331**, and **4287186759** is the 20% darker color. If you saturate the color by 10%, you get **4290864740**, and if you desaturate by 10%, it is **4290874506**.

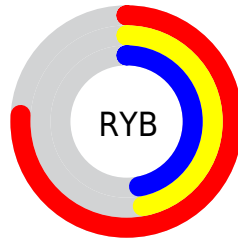
Distribution



Red (76%)

Green (47%)

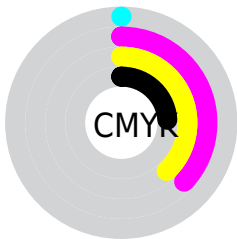
Blue (47%)



Red (76%)

Yellow (47%)

Blue (47%)

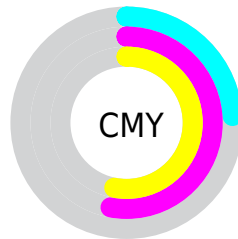


Cyan (0%)

Magenta (37%)

Yellow (38%)

Black (24%)



Cyan (24%)

Magenta (53%)

Yellow (53%)

Brightness & Saturation Gradients

These gradients show how the Android color 4290869623 changes by changing the brightness by 10 percent. The first figure shows a shift by +10% for each color and the second figure -10%.

Similar to the brightness gradients but the following saturation gradients show a change of the Android color 4290869623 by changing the saturation by 10% instead.



4290869623



4290869623

4294967295



4289028190



4294684331



4287186759



4294953670



4285411120



4294960866



4283701276



4282056705



4280483841



4278190080



4290869623



4290869623



4290864740



4290874506

 4290859856

 4290879390

 4290855229

 4290884017

 4290850346

 4290888900

 4290845463

 4290893784

 4290840579

 4290898667

 4290839808

 4290903294

 4290904063

Harmonies

Analogous

The Analogous color harmony consists of three colors that are next to each other on the color wheel.



4290607250



4290869623



4290216033

Triad

The Triadic color harmony groups three colors that are evenly spaced from another and form a triangle on the color wheel.



4290869623



4285044845



4284453057

Complementary

The Complementary color scheme is a pair of colors which are on the opposite of each other on the color wheel.



4290869623



4286037953

Split Complementary

Split-complementary colors differ from the complementary color scheme. The scheme consists of three colors, the original color and two neighbors of the complement color.



4281636792



4290869623



4282817415

Square

The Square scheme is like the rectangle color scheme, but the four colors are evenly spaced on the color wheel.



4290869623



4287074907



4280916642



4287203261

Rectangle

The Rectangle color scheme consists of four colors that form a rectangle on the color wheel.



4290869623



4289365593



4280916642



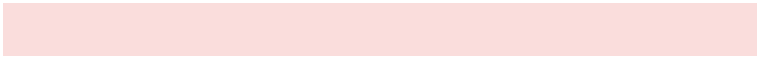
4283470784

Sweetspot

The Sweet Spot groups the original color and five complimentary colors.



4290869623



4294630876



4290869184



4286409835



4294769916



4286414205

Same Dimension

The Same Dimension uses a secret algorithm to generate beautiful new colors.



4290869623



4294609543



4290878839



4284569431



4288742400



4280353024

Inverse Universe

The Inverse Universe completely reimagines the original color for something new.



4286037953



4287100922



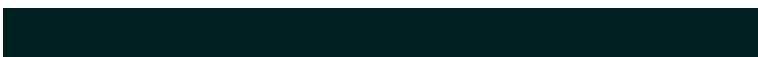
4286028737



4283916641



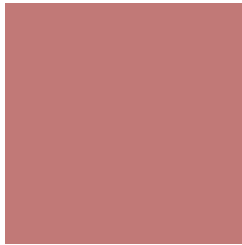
4278230177



4278198305

Previews

White Background



This preview shows how the Android color 4290869623 looks on a white background.

Color Contrast Check

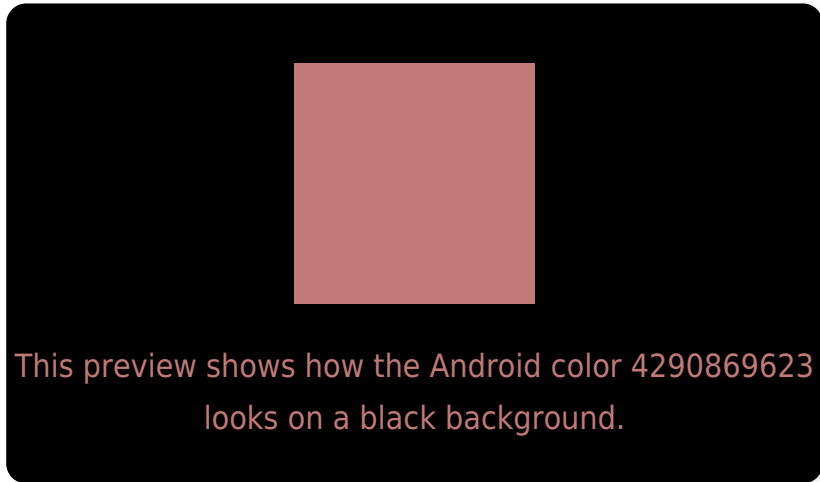
Large Text (above 18pt) WCAG AA ✓ Pass

Any Text WCAG AA ✗ Fail

Large Text (above 18pt) WCAG AAA ✗ Fail

Any Text WCAG AAA ✗ Fail

Black Background



Color Contrast Check

Large Text (above 18pt) WCAG AA ✓ Pass

Any Text WCAG AA ✓ Pass

Large Text (above 18pt) WCAG AAA ✓ Pass

Any Text WCAG AAA × Fail

If you want to check with other color combinations, try the [Color Contrast Checker](#).

Android 4290869623 Background



This preview shows how black text looks on a background with the Android color 4290869623.



This preview shows how white text looks on a background with the Android color 4290869623.

Color Blindness Simulation

Color vision deficiency is a very complex topic, and I could not describe the different causes any better than Wikipedia does, so if you want to learn more, you should check out their [article about color blindness](#).

Dichromacy





Tritanopia
4290934912

Trichromacy



Original Color

4290869623

Protanomaly

4288906621

Deuteranomaly

4289626741

Tritanomaly

4290934909

Monochromacy



Original Color

4290869623

Achromatopsia

4287532686

Achromatomaly

4288775814

CSS Examples

Text

The CSS property to change the color of the text to Android 4290869623 is called "color". The color property can be set on classes, ids or directly on the HTML element.

This example shows how text in the color `rgb(193, 121, 119)` looks like.

```
.text, #text, p{  
    color:rgb(193, 121, 119)  
}
```

If you want to add a text shadow in that color use the text-shadow property, you can generate a text shadow directly with our [CSS Text Shadow Generator](#).

Here you see how black text with a 4 pixel rgb(193, 121, 119) colored shadow looks like.

```
.shadow{ text-shadow: 4px 4px 2px rgb(193, 121, 119) }
```

Border

The CSS property to change the border of an element to Android 4290869623 is called "border". The border property can be set on classes, ids or directly on the HTML element.

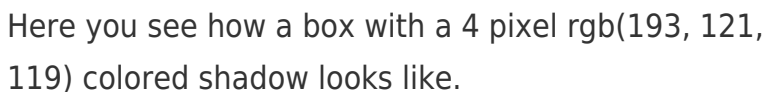
This example shows the color as border, it can be applied via the CSS property "border" or "border-color".

```
.border, #border, table{ border:4px solid rgb(193, 121, 119) }
```

If only the border color should be changed use the property `border-color`.

```
.border{ border-color:rgb(193, 121, 119) }
```

If you want to add a box shadow in that color use:



Here you see how a box with a 4 pixel `rgb(193, 121, 119)` colored shadow looks like.

```
.boxshadow{ -moz-box-shadow:4px 4px 4px 4px rgb(193, 121, 119); -webkit-box-shadow:4px 4px 4px 4px rgb(193, 121, 119); box-shadow:4px 4px 4px 4px rgb(193, 121, 119) }
```

Background

The CSS property to change the background color of an element to Android 4290869623 is called "background". The background property can be set on classes, ids or directly on the HTML element.

```
.background, #background, body{  
background: rgb(193, 121, 119) }
```

If only the background color should be changed can be used:

```
.background{ background-color: rgb(193,  
121, 119) }
```

This example shows the color as background, it is applied via the CSS property "background".

To optimize and compress your CSS code, you can use our [online CSS compressor and optimizer](#) based on csstidy. If you want to create a linear or radial gradient as background or border, check our [CSS Gradient Generator](#).

Hey! You found this booklet interesting? Support Converting Colors with the new Membership Option!

The pro membership hides all ads, plus gives you double the colors in the color bucket, and more awesome pro features!

[Learn more, Memberships starting at \\$2.50/m!](#)

**Follow me
on Twitter!**

@ConvertingColor