

# Converting Colors

Android(4290871630)

Have a look what the booklet for  
Android(4290871630) contains.

<b>Android(4290871630)</b> .....	3
<i><b>Conversions</b></i> .....	4
<i><b>Details</b></i> .....	6
<i><b>Harmonies</b></i> .....	11
<i><b>Previews</b></i> .....	23
<i><b>Color Blindness Simulation</b></i> .....	26
<i><b>CSS Examples</b></i> .....	29

# Color

**Android(4290871630)**

# Conversions

## Conversions Part 1

<b>Format</b>	<b>Color</b>
Hex	C1814E
RGB	193, 129, 78
RGB Percent	76%, 51%, 31%
CMY	0.2431, 0.4941, 0.6941
CMYK	0.00, 0.33, 0.60, 0.24
HSL	27°, 48%, 53%
HSV	27°, 60%, 76%
XYZ	31.2177, 27.5880, 10.8874
YIQ	142.3220, 54.5150, -2.2930

# Conversions

## Conversions Part 2

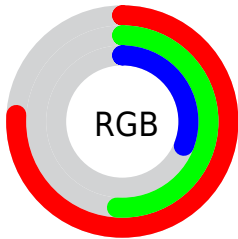
<b>Format</b>	<b>Color</b>
R <sub>Y</sub> B	193, 170, 78
Decimal	12681550
CIE Lab	59.51, 19.48, 37.37
CIE LCh	60, 42.143, 62.463
Yxy	27.5880, 0.4479, 0.3958
Android (android.graphics.Color)	4290871630 (0xFFC1814E)
YUV	142.3220, -31.7107, 44.4446
Hunter-Lab	52.5243, 14.1736, 24.4772

# Details

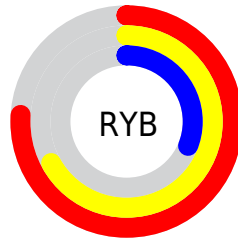
The Android color `4290871630` is a dark color, and the websafe version is hex `CC9966`. The color can be described as middle muted orange. A complement of this color would be `4283338433`, and the grayscale version is `4287598479`.

A 20% lighter version of the original color is `4294751872`, and `4287123231` is the 20% darker color. If you saturate the color by 10%, you get `4290868795`, and if you desaturate by 10%, it is `4290874465`.

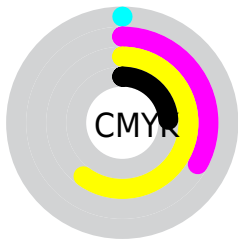
# Distribution



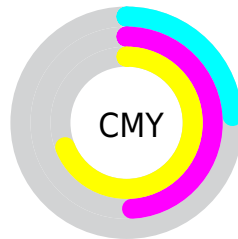
- Red (76%)
- Green (51%)
- Blue (31%)



- Red (76%)
- Yellow (67%)
- Blue (31%)



- Cyan (0%)
- Magenta (33%)
- Yellow (60%)
- Black (24%)



- Cyan (24%)
- Magenta (49%)
- Yellow (69%)

# Brightness & Saturation Gradients

These gradients show how the Android color 4290871630 changes by changing the brightness by 10 percent. The first figure shows a shift by +10% for each color and the second figure -10%.

Similar to the brightness gradients but the following saturation gradients show a change of the Android color 4290871630 by changing the saturation by 10% instead.



 4290871630

 4290871630

4294967295

 4288964662

 4294751872

 4287123231

 4294955675

 4285282310

 4294962870

 4283507200

 4294967250

 4281732352

 4294967278

 4280221697

 4278190080

 4290871630

 4290871630

 4290868795

 4290874465

 4290866215

 4290877045

 4290863380

 4290879880

 4290860545

 4290882715

 4290860544

 4290885551

 4290888130

 4290890965

 4290893800

 4290896636

# Harmonies

## Analogous

The Analogous color harmony consists of three colors that are next to each other on the color wheel.



4292048234



4290871630



4288908867

# Triad

The Triadic color harmony groups three colors that are evenly spaced from another and form a triangle on the color wheel.



4290871630



4278231697



4288054478

# Complementary

The Complementary color scheme is a pair of colors which are on the opposite of each other on the color wheel.



4290871630



4283338433

# Split Complementary

Split-complementary colors differ from the complementary color scheme. The scheme consists of three colors, the original color and two neighbors of the complement color.



4283863769



4290871630



4278231478

# Square

The Square scheme is like the rectangle color scheme, but the four colors are evenly spaced on the color wheel.



4290871630



4283211628



4278230224



4290803634

# Rectangle

The Rectangle color scheme consists of four colors that form a rectangle on the color wheel.



4290871630



4287272520



4278230224



4286876116

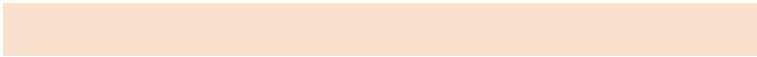


# Sweetspot

The Sweet Spot groups the original color and five complimentary colors.



4290871630



4294631885



4290858639



4286410337



4294769916



4286414205



# Same Dimension

The Same Dimension uses a secret algorithm to generate beautiful new colors.



4290871630



4294612550



4290885966



4284570711



4288759552



4280356608



# Inverse Universe

The Inverse Universe completely reimagines the original color for something new.



4283338433



4282821370



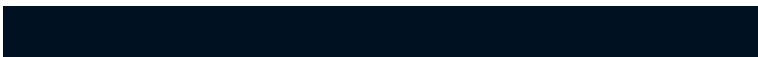
4283324097



4283915617



4278213025

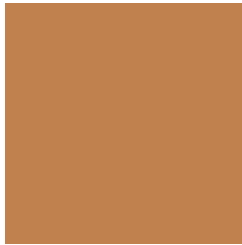


4278194721



# Previews

## White Background



This preview shows how the Android color 4290871630 looks on a white background.

## Color Contrast Check

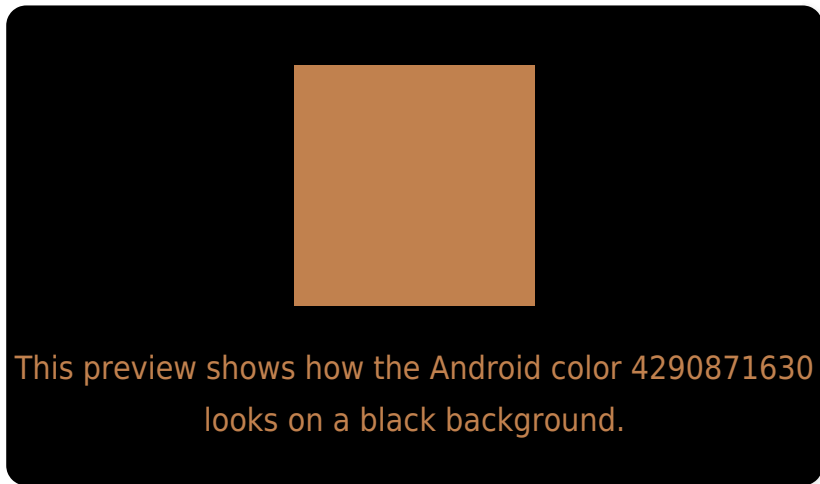
Large Text (above 18pt) WCAG AA ✓ Pass

Any Text WCAG AA ✗ Fail

Large Text (above 18pt) WCAG AAA ✗ Fail

Any Text WCAG AAA ✗ Fail

# Black Background



## Color Contrast Check

Large Text (above 18pt) WCAG AA ✓ Pass

Any Text WCAG AA ✓ Pass

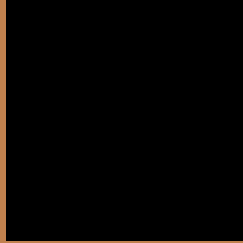
Large Text (above 18pt) WCAG AAA ✓ Pass

Any Text WCAG AAA × Fail

If you want to check with other color combinations, try the [Color Contrast Checker](#).



# Android 4290871630 Background



This preview shows how black text looks on a background with the Android color 4290871630.



This preview shows how white text looks on a background with the Android color 4290871630.

# Color Blindness Simulation

Color vision deficiency is a very complex topic, and I could not describe the different causes any better than Wikipedia does, so if you want to learn more, you should check out their [article about color blindness](#).

## Dichromacy



**Original Color**  
4290871630

**Protanopia**  
4288581715

**Deuteranopia**  
4289759564



**Tritanopia**  
4291132292

# Trichromacy



**Original Color**  
4290871630

**Protanomaly**  
4289432401

**Deuteranomaly**  
4290152013

**Tritanomaly**  
4291067248

# Monochromacy



**Original Color**  
4290871630

**Achromatopsia**  
4287532686

**Achromatomaly**  
4288776567

# CSS Examples

## Text

The CSS property to change the color of the text to Android 4290871630 is called "color". The color property can be set on classes, ids or directly on the HTML element.

This example shows how text in the color `rgb(193, 129, 78)` looks like.

```
.text, #text, p{  
    color:rgb(193, 129, 78)  
}
```

If you want to add a text shadow in that color use the text-shadow property, you can generate a text shadow directly with our [CSS Text Shadow Generator](#).

Here you see how black text with a 4 pixel rgb(193, 129, 78) colored shadow looks like.

```
.shadow{ text-shadow: 4px 4px 2px rgb(193, 129, 78) }
```

## Border

The CSS property to change the border of an element to Android 4290871630 is called "border". The border property can be set on classes, ids or directly on the HTML element.

This example shows the color as border, it can be applied via the CSS property "border" or "border-color".

```
.border, #border, table{ border:4px solid rgb(193, 129, 78) }
```

If only the border color should be changed use the property `border-color`.

```
.border{ border-color:rgb(193, 129, 78) }
```

If you want to add a box shadow in that color use:

Here you see how a box with a 4 pixel `rgb(193, 129, 78)` colored shadow looks like.

```
.boxshadow{ -moz-box-shadow:4px 4px 4px  
4px rgb(193, 129, 78); -webkit-box-  
shadow:4px 4px 4px 4px rgb(193, 129, 78);  
box-shadow:4px 4px 4px 4px rgb(193, 129,  
78) }
```

# Background

The CSS property to change the background color of an element to Android 4290871630 is called "background". The background property can be set on classes, ids or directly on the HTML element.

```
.background, #background, body{  
background: rgb(193, 129, 78) }
```

If only the background color should be changed can be used:

```
.background{ background-color: rgb(193,  
129, 78) }
```

This example shows the color as background, it is applied via the CSS property "background".

To optimize and compress your CSS code, you can use our [online CSS compressor and optimizer](#) based on csstidy. If you want to create a linear or radial gradient as background or border, check our [CSS Gradient Generator](#).



Hey! You found this booklet interesting? Support Converting Colors with the new Membership Option!

The pro membership hides all ads, plus gives you double the colors in the color bucket, and more awesome pro features!

**[Learn more, Memberships starting at \\$2.50/m!](#)**

**Follow me  
on Twitter!**

@ConvertingColor