

# Converting Colors

Android(4290872191)

Have a look what the booklet for  
Android(4290872191) contains.

<b>Android(4290872191)</b> .....	3
<b><i>Conversions</i></b> .....	4
<b><i>Details</i></b> .....	6
<b><i>Harmonies</i></b> .....	11
<b><i>Previews</i></b> .....	23
<b><i>Color Blindness Simulation</i></b> .....	26
<b><i>CSS Examples</i></b> .....	29

# **Color**

**Android(4290872191)**

# Conversions

## Conversions Part 1

<b>Format</b>	<b>Color</b>
Hex	C1837F
RGB	193, 131, 127
RGB Percent	76%, 51%, 50%
CMY	0.2431, 0.4863, 0.5020
CMYK	0.00, 0.32, 0.34, 0.24
HSL	4°, 35%, 63%
HSV	4°, 34%, 76%
XYZ	33.9394, 29.1024, 23.9072
YIQ	149.0820, 38.2360, 11.9000

# Conversions

## Conversions Part 2

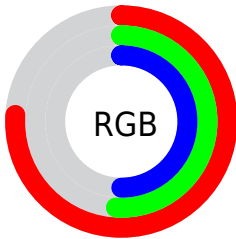
Format	Color
<a href="#">RYB</a>	<a href="#">193, 131, 127</a>
Decimal	<a href="#">12682111</a>
CIELab	<a href="#">60.87, 23.38, 11.88</a>
CIELCh	<a href="#">61, 26.226, 26.937</a>
Yxy	<a href="#">29.1024, 0.3903, 0.3347</a>
Android (android.graphics.Color)	<a href="#">4290872191</a> ( <a href="#">0xFFC1837F</a> )
YUV	<a href="#">149.0820, -10.8864, 38.5161</a>
Hunter-Lab	<a href="#">53.9466, 17.8930, 11.4874</a>

# Details

The Android color **4290872191** is a light color, and the websafe version is hex **CC9999**. A complement of this color would be **4286561729**, and the grayscale version is **4287993237**.

A 20% lighter version of the original color is **4294686900**, and **4287254862** is the 20% darker color. If you saturate the color by 10%, you get **4290867564**, and if you desaturate by 10%, it is **4290876818**.

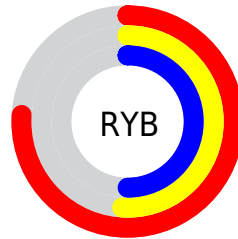
# Distribution



Red (76%)

Green (51%)

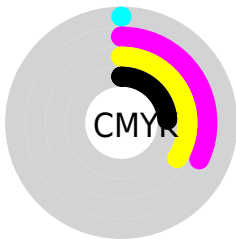
Blue (50%)



Red (76%)

Yellow (51%)

Blue (50%)

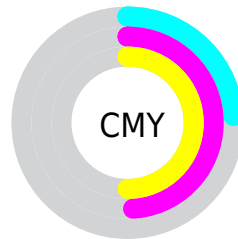


Cyan (0%)

Magenta (32%)

Yellow (34%)

Black (24%)



Cyan (24%)

Magenta (49%)

Yellow (50%)

# Brightness & Saturation Gradients

These gradients show how the Android color 4290872191 changes by changing the brightness by 10 percent. The first figure shows a shift by +10% for each color and the second figure -10%.

Similar to the brightness gradients but the following saturation gradients show a change of the Android color 4290872191 by changing the saturation by 10% instead.





4290872191



4290872191

4294967295



4289030502



4294686900



4287254862



4294956239



4285479223



4294963691



4283769378



4282125324



4280745985



4278190080



4290872191



4290872191



4290867564



4290876818

 4290862936

 4290881446

 4290858309

 4290886073

 4290853426

 4290890956

 4290848798

 4290895584

 4290844171

 4290900211

 4290841600

 4290904063

# Harmonies

## Analogous

The Analogous color harmony consists of three colors that are next to each other on the color wheel.



4290675350



4290872191



4290283885

# Triad

The Triadic color harmony groups three colors that are evenly spaced from another and form a triangle on the color wheel.



4290872191



4285767033



4285634241

# Complementary

The Complementary color scheme is a pair of colors which are on the opposite of each other on the color wheel.



4290872191



4286561729

# Split Complementary

Split-complementary colors differ from the complementary color scheme. The scheme consists of three colors, the original color and two neighbors of the complement color.



4283669689



4290872191



4284063888

# Square

The Square scheme is like the rectangle color scheme, but the four colors are evenly spaced on the color wheel.



4290872191



4287469673



4283080615



4287860412

# Rectangle

The Rectangle color scheme consists of four colors that form a rectangle on the color wheel.



4290872191



4289498726



4283080615



4284913855

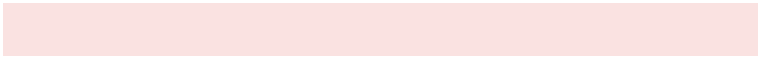


# Sweetspot

The Sweet Spot groups the original color and five complimentary colors.



4290872191



4294632161



4290871230



4286410606



4294769916



4286414205



# Same Dimension

The Same Dimension uses a secret algorithm to generate beautiful new colors.



4290872191



4294613651



4290880383



4284569687



4288743936



4280353280



# Inverse Universe

The Inverse Universe completely reimagines the original color for something new.



4286561729



4287886586



4286553537



4283916385



4278228897

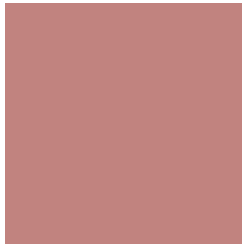


4278198049



# Previews

## White Background



This preview shows how the Android color 4290872191 looks on a white background.

## Color Contrast Check

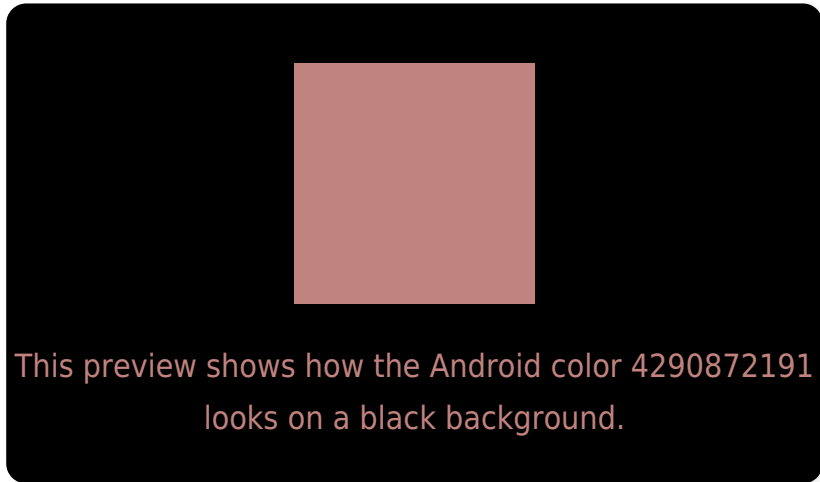
Large Text (above 18pt) WCAG AA ✓ Pass

Any Text WCAG AA ✗ Fail

Large Text (above 18pt) WCAG AAA ✗ Fail

Any Text WCAG AAA ✗ Fail

# Black Background



## Color Contrast Check

Large Text (above 18pt) WCAG AA ✓ Pass

Any Text WCAG AA ✓ Pass

Large Text (above 18pt) WCAG AAA ✓ Pass

Any Text WCAG AAA × Fail

If you want to check with other color combinations, try the [Color Contrast Checker](#).



# Android 4290872191 Background



This preview shows how black text looks on a background with the Android color 4290872191.



This preview shows how white text looks on a background with the Android color 4290872191.

# Color Blindness Simulation

Color vision deficiency is a very complex topic, and I could not describe the different causes any better than Wikipedia does, so if you want to learn more, you should check out their [article about color blindness](#).

## Dichromacy



**Original Color**


4290872191

**Protanopia**

4288254855

**Deuteranopia**

4289302141



**Tritanopia**  
4290937227

# Trichromacy



**Original Color**  
4290872191

**Protanomaly**  
4289236356

**Deuteranomaly**  
4289890942

**Tritanomaly**  
4290937479

# Monochromacy



**Original Color**  
4290872191

**Achromatopsia**  
4287993237

**Achromatomaly**  
4289040013

# CSS Examples

## Text

The CSS property to change the color of the text to Android 4290872191 is called "color". The color property can be set on classes, ids or directly on the HTML element.

This example shows how text in the color `rgb(193, 131, 127)` looks like.

```
.text, #text, p{  
    color:rgb(193, 131, 127)  
}
```

If you want to add a text shadow in that color use the text-shadow property, you can generate a text shadow directly with our [CSS Text Shadow Generator](#).

Here you see how black text with a 4 pixel rgb(193, 131, 127) colored shadow looks like.

```
.shadow{ text-shadow: 4px 4px 2px rgb(193, 131, 127) }
```

## Border

The CSS property to change the border of an element to Android 4290872191 is called "border". The border property can be set on classes, ids or directly on the HTML element.

This example shows the color as border, it can be applied via the CSS property "border" or "border-color".

```
.border, #border, table{ border:4px solid rgb(193, 131, 127) }
```

If only the border color should be changed use the property `border-color`.

```
.border{ border-color:rgb(193, 131, 127) }
```

If you want to add a box shadow in that color use:

Here you see how a box with a 4 pixel `rgb(193, 131, 127)` colored shadow looks like.

```
.boxshadow{ -moz-box-shadow:4px 4px 4px  
4px rgb(193, 131, 127); -webkit-box-  
shadow:4px 4px 4px 4px rgb(193, 131, 127);  
box-shadow:4px 4px 4px 4px rgb(193, 131,  
127) }
```

# Background

The CSS property to change the background color of an element to Android 4290872191 is called "background". The background property can be set on classes, ids or directly on the HTML element.

```
.background, #background, body{  
background: rgb(193, 131, 127) }
```

If only the background color should be changed can be used:

```
.background{ background-color: rgb(193,  
131, 127) }
```

This example shows the color as background, it is applied via the CSS property "background".

To optimize and compress your CSS code, you can use our [online CSS compressor and optimizer](#) based on csstidy. If you want to create a linear or radial gradient as background or border, check our [CSS Gradient Generator](#).



Hey! You found this booklet interesting? Support Converting Colors with the new Membership Option!

The pro membership hides all ads, plus gives you double the colors in the color bucket, and more awesome pro features!

**[Learn more, Memberships starting at \\$2.50/m!](#)**

**Follow me  
on Twitter!**

@ConvertingColor