

# Converting Colors

Android(4290874967)

Have a look what the booklet for  
Android(4290874967) contains.

<b>Android(4290874967)</b> .....	3
<b><i>Conversions</i></b> .....	4
<b><i>Details</i></b> .....	6
<b><i>Harmonies</i></b> .....	11
<b><i>Previews</i></b> .....	23
<b><i>Color Blindness Simulation</i></b> .....	26
<b><i>CSS Examples</i></b> .....	29

**Color**

**Android(4290874967)**

# Conversions

## Conversions Part 1

<b>Format</b>	<b>Color</b>
Hex	C18E57
RGB	193, 142, 87
RGB Percent	76%, 56%, 34%
CMY	0.2431, 0.4431, 0.6588
CMYK	0.00, 0.26, 0.55, 0.24
HSL	31°, 46%, 55%
HSV	31°, 55%, 76%
XYZ	33.3856, 31.3716, 13.3125
YIQ	150.9790, 48.0510, -6.2930

# Conversions

## Conversions Part 2

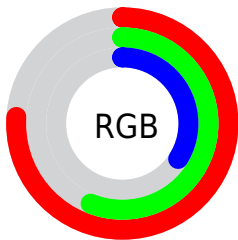
<b>Format</b>	<b>Color</b>
<a href="#">RYB</a>	<a href="#">185, 193, 87</a>
Decimal	<a href="#">12684887</a>
<a href="#">CIELab</a>	<a href="#">62.82, 13.04, 36.63</a>
<a href="#">CIElCh</a>	<a href="#">63, 38.884, 70.400</a>
<a href="#">Yxy</a>	<a href="#">31.3716, 0.4276, 0.4018</a>
<a href="#">Android (android.graphics.Color)</a>	<a href="#">4290874967 (0xFFC18E57)</a>
<a href="#">YUV</a>	<a href="#">150.9790, -31.5416, 36.8524</a>
<a href="#">Hunter-Lab</a>	<a href="#">56.0103, 8.3789, 25.1152</a>

# Details

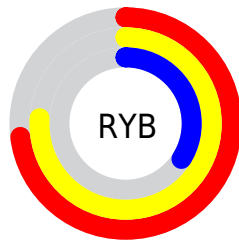
The Android color `4290874967` is a dark color, and the websafe version is hex `CC9966`. The color can be described as middle muted orange. A complement of this color would be `4283927233`, and the grayscale version is `4288124823`.

A 20% lighter version of the original color is `4294755466`, and `4287126567` is the 20% darker color. If you saturate the color by 10%, you get `4290872644`, and if you desaturate by 10%, it is `4290877290`.

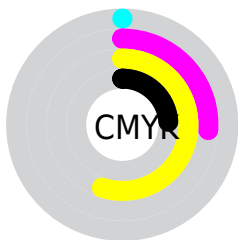
# Distribution



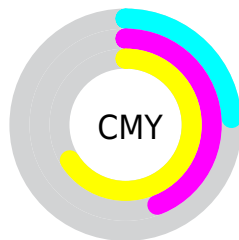
- Red (76%)
- Green (56%)
- Blue (34%)



- Red (73%)
- Yellow (76%)
- Blue (34%)



- Cyan (0%)
- Magenta (26%)
- Yellow (55%)
- Black (24%)



- Cyan (24%)
- Magenta (44%)
- Yellow (66%)

# Brightness & Saturation Gradients

These gradients show how the Android color 4290874967 changes by changing the brightness by 10 percent. The first figure shows a shift by +10% for each color and the second figure -10%.

Similar to the brightness gradients but the following saturation gradients show a change of the Android color 4290874967 by changing the saturation by 10% instead.





4290874967



4290874967

4294967295



4288967743



4294755466



4287126567



4294959269



4285350928



4294966464



4283641344



4294967260



4281866496



4294967289



4280352768



4278190080



4290874967



4290874967



4290872644



4290877290

 4290870064

 4290879870

 4290867741

 4290882193

 4290865418

 4290884516

 4290864128

 4290886840

 4290889419

 4290891742

 4290894065

 4290896639

# Harmonies

## Analogous

The Analogous color harmony consists of three colors that are next to each other on the color wheel.



4292182637



4290874967



4288846419

# Triad

The Triadic color harmony groups three colors that are evenly spaced from another and form a triangle on the color wheel.



4290874967



4278233763



4289432269

# Complementary

The Complementary color scheme is a pair of colors which are on the opposite of each other on the color wheel.



4290874967



4283927233

# Split Complementary

Split-complementary colors differ from the complementary color scheme. The scheme consists of three colors, the original color and two neighbors of the complement color.



4286093276



4290874967



4278233284

# Square

The Square scheme is like the rectangle color scheme, but the four colors are evenly spaced on the color wheel.



4290874967



4283410560



4281311960



4291657904

# Rectangle

The Rectangle color scheme consists of four colors that form a rectangle on the color wheel.



4290874967



4287275099



4281311960



4288450516

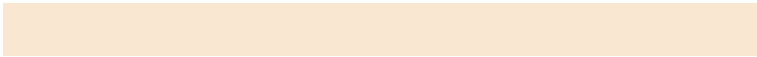


# Sweetspot

The Sweet Spot groups the original color and five complimentary colors.



4290874967



4294633426



4290860938



4286411365



4294769916



4286414205



# Same Dimension

The Same Dimension uses a secret algorithm to generate beautiful new colors.



4290874967



4294617941



4290756951



4284570711



4288762624



4280357120



# Inverse Universe

The Inverse Universe completely reimagines the original color for something new.



4283927233



4283802874



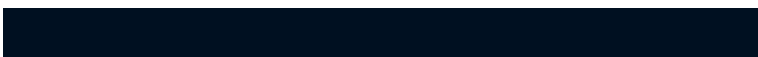
4284045249



4283915361



4278209953

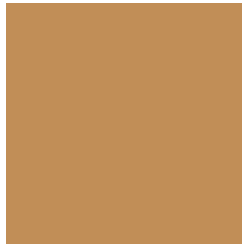


4278194209



# Previews

## White Background



This preview shows how the Android color 4290874967 looks on a white background.

## Color Contrast Check

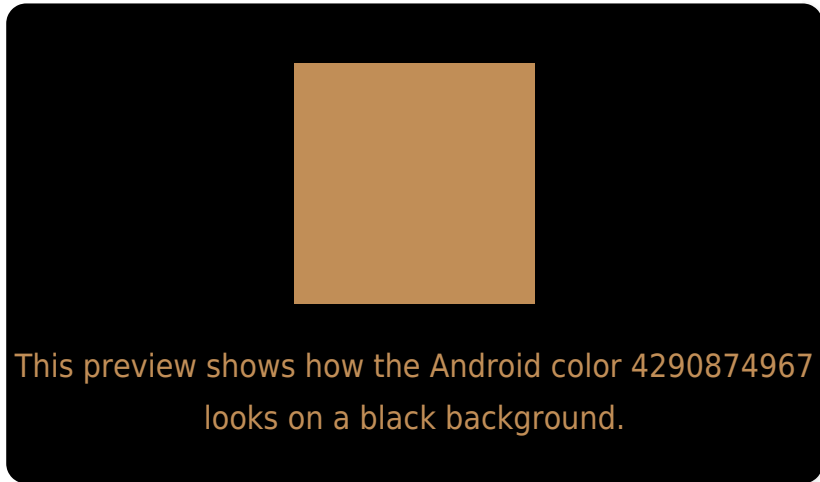
Large Text (above 18pt) WCAG AA × Fail

Any Text WCAG AA × Fail

Large Text (above 18pt) WCAG AAA × Fail

Any Text WCAG AAA × Fail

# Black Background



## Color Contrast Check

Large Text (above 18pt) WCAG AA ✓ Pass

Any Text WCAG AA ✓ Pass

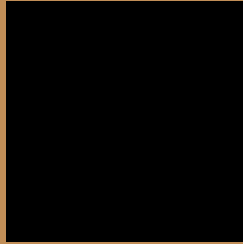
Large Text (above 18pt) WCAG AAA ✓ Pass

Any Text WCAG AAA ✓ Pass

If you want to check with other color combinations, try the [Color Contrast Checker](#).



# Android 4290874967 Background



This preview shows how black text looks on a background with the Android color 4290874967.



This preview shows how white text looks on a background with the Android color 4290874967.

# Color Blindness Simulation

Color vision deficiency is a very complex topic, and I could not describe the different causes any better than Wikipedia does, so if you want to learn more, you should check out their [article about color blindness](#).


## Dichromacy



**Original Color**  
4290874967

**Protanopia**  
4289173595

**Deuteranopia**  
4290416982



**Tritanopia**  
4291200913

# Trichromacy



**Original Color**  
4290874967

**Protanomaly**  
4289762394

**Deuteranomaly**  
4290613334

**Tritanomaly**  
4291070588

# Monochromacy



**Original Color**  
4290874967

**Achromatopsia**  
4288124823

**Achromatomaly**  
4289107072

# CSS Examples

## Text

The CSS property to change the color of the text to Android 4290874967 is called "color". The color property can be set on classes, ids or directly on the HTML element.

This example shows how text in the color `rgb(193, 142, 87)` looks like.

```
.text, #text, p{  
    color:rgb(193, 142, 87)  
}
```

If you want to add a text shadow in that color use the text-shadow property, you can generate a text shadow directly with our [CSS Text Shadow Generator](#).

Here you see how black text with a 4 pixel rgb(193, 142, 87) colored shadow looks like.

```
.shadow{ text-shadow: 4px 4px 2px rgb(193, 142, 87) }
```

## Border

The CSS property to change the border of an element to Android 4290874967 is called "border". The border property can be set on classes, ids or directly on the HTML element.

This example shows the color as border, it can be applied via the CSS property "border" or "border-color".

```
.border, #border, table{ border:4px solid rgb(193, 142, 87) }
```

If only the border color should be changed use the property `border-color`.

```
.border{ border-color:rgb(193, 142, 87) }
```

If you want to add a box shadow in that color use:

Here you see how a box with a 4 pixel `rgb(193, 142, 87)` colored shadow looks like.

```
.boxshadow{ -moz-box-shadow:4px 4px 4px  
4px rgb(193, 142, 87); -webkit-box-  
shadow:4px 4px 4px 4px rgb(193, 142, 87);  
box-shadow:4px 4px 4px 4px rgb(193, 142,  
87) }
```

# Background

The CSS property to change the background color of an element to Android 4290874967 is called "background". The background property can be set on classes, ids or directly on the HTML element.

```
.background, #background, body{  
background: rgb(193, 142, 87) }
```

If only the background color should be changed can be used:

```
.background{ background-color: rgb(193,  
142, 87) }
```

This example shows the color as background, it is applied via the CSS property "background".

To optimize and compress your CSS code, you can use our [online CSS compressor and optimizer](#) based on csstidy. If you want to create a linear or radial gradient as background or border, check our [CSS Gradient Generator](#).



Hey! You found this booklet interesting? Support Converting Colors with the new Membership Option!

The pro membership hides all ads, plus gives you double the colors in the color bucket, and more awesome pro features!

**[Learn more, Memberships starting at \\$2.50/m!](#)**

**Follow me  
on Twitter!**

@ConvertingColor