

Converting Colors

Android(4290876510)

Have a look what the booklet for
Android(4290876510) contains.

Android(4290876510)	3
<i>Conversions</i>	4
<i>Details</i>	6
<i>Harmonies</i>	11
<i>Previews</i>	23
<i>Color Blindness Simulation</i>	26
<i>CSS Examples</i>	29

Color

Android(4290876510)

Conversions

Conversions Part 1

Format	Color
Hex	C1945E
RGB	193, 148, 94
RGB Percent	76%, 58%, 37%
CMY	0.2431, 0.4196, 0.6314
CMYK	0.00, 0.23, 0.51, 0.24
HSL	33°, 44%, 56%
HSV	33°, 51%, 76%
XYZ	34.6026, 33.3254, 15.1984
YIQ	155.2990, 44.1540, -7.2540

Conversions

Conversions Part 2

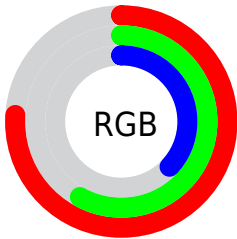
Format	Color
RYB	177, 193, 94
Decimal	12686430
CIELab	64.42, 10.37, 34.91
CIELCh	64, 36.421, 73.462
Yxy	33.3254, 0.4163, 0.4009
Android (android.graphics.Color)	4290876510 (0xFFC1945E)
YUV	155.2990, -30.2204, 33.0638
Hunter-Lab	57.7282, 5.9696, 24.8002

Details

The Android color **4290876510** is a dark color, and the websafe version is hex **CC9966**. The color can be described as middle muted orange. A complement of this color would be **4284386241**, and the grayscale version is **4288453788**.

A 20% lighter version of the original color is **4294691473**, and **4287193390** is the 20% darker color. If you saturate the color by 10%, you get **4290874187**, and if you desaturate by 10%, it is **4290878833**.

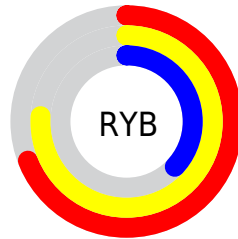
Distribution



Red (76%)

Green (58%)

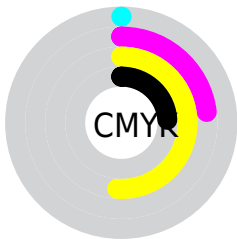
Blue (37%)



Red (69%)

Yellow (76%)

Blue (37%)

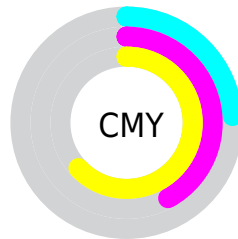


Cyan (0%)

Magenta (23%)

Yellow (51%)

Black (24%)



Cyan (24%)

Magenta (42%)

Yellow (63%)

Brightness & Saturation Gradients

These gradients show how the Android color 4290876510 changes by changing the brightness by 10 percent. The first figure shows a shift by +10% for each color and the second figure -10%.

Similar to the brightness gradients but the following saturation gradients show a change of the Android color 4290876510 by changing the saturation by 10% instead.



4290876510



4290876510

4294967295



4289034822



4294691473



4287193390



4294960812



4285418007



4294967240



4283642624



4294967268



4281998848



4280420096



4278190080



4290876510



4290876510



4290874187



4290878833

■ 4290871863

■ 4290881157

■ 4290869796

■ 4290883224

■ 4290867473

■ 4290885547

■ 4290865408

■ 4290887871

■ 4290890194

■ 4290892261

■ 4290894584

■ 4290896895

Harmonies

Analogous

The Analogous color harmony consists of three colors that are next to each other on the color wheel.



4292184433



4290876510



4288913244

Triad

The Triadic color harmony groups three colors that are evenly spaced from another and form a triangle on the color wheel.



4290876510



4280331946



4289892044

Complementary

The Complementary color scheme is a pair of colors which are on the opposite of each other on the color wheel.



4290876510



4284386241

Split Complementary

Split-complementary colors differ from the complementary color scheme. The scheme consists of three colors, the original color and two neighbors of the complement color.



4286946011



4290876510



4278234056

Square

The Square scheme is like the rectangle color scheme, but the four colors are evenly spaced on the color wheel.



4290876510



4283804809



4283147738



4291855792

Rectangle

The Rectangle color scheme consists of four colors that form a rectangle on the color wheel.



4290876510



4287341925



4283147738



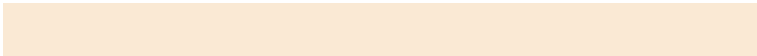
4289041106

Sweetspot

The Sweet Spot groups the original color and five complimentary colors.



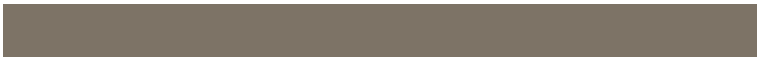
4290876510



4294633940



4290862732



4286411622



4294769916



4286414205

Same Dimension

The Same Dimension uses a secret algorithm to generate beautiful new colors.



4290876510



4294619999



4290691422



4284570711



4288763904



4280357376

Inverse Universe

The Inverse Universe completely reimagines the original color for something new.



4284386241



4284458490



4284571329



4283915361



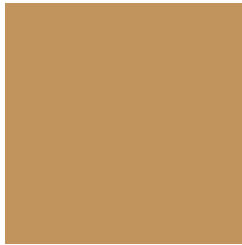
4278208929



4278193953

Previews

White Background



This preview shows how the Android color 4290876510 looks on a white background.

Color Contrast Check

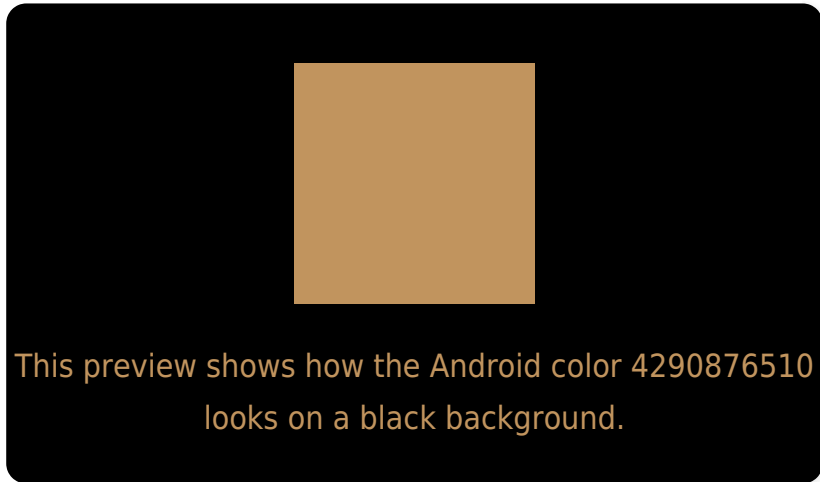
Large Text (above 18pt) WCAG AA × Fail

Any Text WCAG AA × Fail

Large Text (above 18pt) WCAG AAA × Fail

Any Text WCAG AAA × Fail

Black Background



Color Contrast Check

Large Text (above 18pt) WCAG AA ✓ Pass

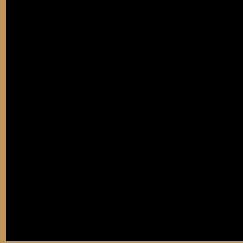
Any Text WCAG AA ✓ Pass

Large Text (above 18pt) WCAG AAA ✓ Pass

Any Text WCAG AAA ✓ Pass

If you want to check with other color combinations, try the [Color Contrast Checker](#).

Android 4290876510 Background



This preview shows how black text looks on a background with the Android color 4290876510.



This preview shows how white text looks on a background with the Android color 4290876510.

Color Blindness Simulation

Color vision deficiency is a very complex topic, and I could not describe the different causes any better than Wikipedia does, so if you want to learn more, you should check out their [article about color blindness](#).


Dichromacy



Original Color
4290876510

Protanopia
4289436769

Deuteranopia
4290680158



Tritanopia
4291202456

Trichromacy



Original Color
4290876510

Protanomaly
4289960288

Deuteranomaly
4290745694

Tritanomaly
4291072131

Monochromacy



Original Color
4290876510

Achromatopsia
4288387995

Achromatomaly
4289304709

CSS Examples

Text

The CSS property to change the color of the text to Android 4290876510 is called "color". The color property can be set on classes, ids or directly on the HTML element.

This example shows how text in the color `rgb(193, 148, 94)` looks like.

```
.text, #text, p{  
    color:rgb(193, 148, 94)  
}
```

If you want to add a text shadow in that color use the text-shadow property, you can generate a text shadow directly with our [CSS Text Shadow Generator](#).

Here you see how black text with a 4 pixel rgb(193, 148, 94) colored shadow looks like.

```
.shadow{ text-shadow: 4px 4px 2px rgb(193, 148, 94) }
```

Border

The CSS property to change the border of an element to Android 4290876510 is called "border". The border property can be set on classes, ids or directly on the HTML element.

This example shows the color as border, it can be applied via the CSS property "border" or "border-color".

```
.border, #border, table{ border:4px solid rgb(193, 148, 94) }
```

If only the border color should be changed use the property border-color.

```
.border{ border-color:rgb(193, 148, 94) }
```

If you want to add a box shadow in that color use:

Here you see how a box with a 4 pixel rgb(193, 148, 94) colored shadow looks like.

```
.boxshadow{ -moz-box-shadow:4px 4px 4px  
4px rgb(193, 148, 94); -webkit-box-  
shadow:4px 4px 4px 4px rgb(193, 148, 94);  
box-shadow:4px 4px 4px 4px rgb(193, 148,  
94) }
```

Background

The CSS property to change the background color of an element to Android 4290876510 is called "background". The background property can be set on classes, ids or directly on the HTML element.

```
.background, #background, body{  
background: rgb(193, 148, 94) }
```

If only the background color should be changed can be used:

```
.background{ background-color: rgb(193,  
148, 94) }
```

This example shows the color as background, it is applied via the CSS property "background".

To optimize and compress your CSS code, you can use our [online CSS compressor and optimizer](#) based on csstidy. If you want to create a linear or radial gradient as background or border, check our [CSS Gradient Generator](#).

Hey! You found this booklet interesting? Support Converting Colors with the new Membership Option!

The pro membership hides all ads, plus gives you double the colors in the color bucket, and more awesome pro features!

[Learn more, Memberships starting at \\$2.50/m!](#)

**Follow me
on Twitter!**

@ConvertingColor