

Converting Colors

Android(4290877336)

Have a look what the booklet for
Android(4290877336) contains.

Android(4290877336)	3
<i>Conversions</i>	4
<i>Details</i>	6
<i>Harmonies</i>	11
<i>Previews</i>	23
<i>Color Blindness Simulation</i>	26
<i>CSS Examples</i>	29

Color

Android(4290877336)

Conversions

Conversions Part 1

Format	Color
Hex	C19798
RGB	193, 151, 152
RGB Percent	76%, 59%, 60%
CMY	0.2431, 0.4078, 0.4039
CMYK	0.00, 0.22, 0.21, 0.24
HSL	359°, 25%, 67%
HSV	359°, 22%, 76%
XYZ	38.7264, 35.7377, 34.5627
YIQ	163.6720, 24.7110, 9.2150

Conversions

Conversions Part 2

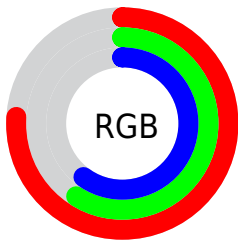
Format	Color
RYB	193, 151, 152
Decimal	12687256
CIELab	66.32, 15.85, 5.50
CIELCh	66, 16.778, 19.130
Yxy	35.7377, 0.3552, 0.3278
Android (android.graphics.Color)	4290877336 (0xFFC19798)
YUV	163.6720, -5.7543, 25.7207
Hunter-Lab	59.7810, 11.0164, 7.5678

Details

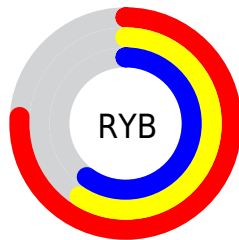
The Android color `4290877336` is a light color, and the websafe version is hex `CC9999`. A complement of this color would be `4288135616`, and the grayscale version is `4288980132`.

A 20% lighter version of the original color is `4294626766`, and `4287325285` is the 20% darker color. If you saturate the color by 10%, you get `4290872453`, and if you desaturate by 10%, it is `4290882219`.

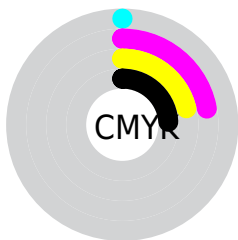
Distribution



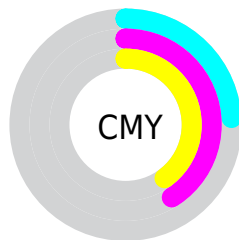
- Red (76%)
- Green (59%)
- Blue (60%)



- Red (76%)
- Yellow (59%)
- Blue (60%)



- Cyan (0%)
- Magenta (22%)
- Yellow (21%)
- Black (24%)



- Cyan (24%)
- Magenta (41%)
- Yellow (40%)

Brightness & Saturation Gradients

These gradients show how the Android color 4290877336 changes by changing the brightness by 10 percent. The first figure shows a shift by +10% for each color and the second figure -10%.

Similar to the brightness gradients but the following saturation gradients show a change of the Android color 4290877336 by changing the saturation by 10% instead.

 4290877336

 4290877336

4294967295

 4289035646

 4294626766

 4287325285

 4294961898

 4285615181

 4283970871

 4282326817

 4280879626

 4278190080

 4290877336

 4290877336

 4290872453

 4290882219

 4290867314

 4290887358

 4290862431

 4290892241

 4290857549

 4290897123

 4290852666

 4290902262

 4290847527

 4290904063

 4290842644

 4290838533

Harmonies

Analogous

The Analogous color harmony consists of three colors that are next to each other on the color wheel.



4290549671



4290877336



4290615947

Triad

The Triadic color harmony groups three colors that are evenly spaced from another and form a triangle on the color wheel.



4290877336



4287735693



4287276222

Complementary

The Complementary color scheme is a pair of colors which are on the opposite of each other on the color wheel.



4290877336



4288135616

Split Complementary

Split-complementary colors differ from the complementary color scheme. The scheme consists of three colors, the original color and two neighbors of the complement color.



4286359735



4290877336



4286753435

Square

The Square scheme is like the rectangle color scheme, but the four colors are evenly spaced on the color wheel.



4290877336



4288914309



4286229162



4288520126

Rectangle

The Rectangle color scheme consists of four colors that form a rectangle on the color wheel.



4290877336



4290223494



4286229162



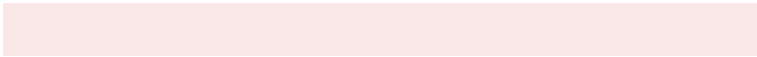
4286883517

Sweetspot

The Sweet Spot groups the original color and five complimentary colors.



4290877336



4294633705



4290811841



4286411635



4294769916



4286414205

Same Dimension

The Same Dimension uses a secret algorithm to generate beautiful new colors.



4290877336



4294621626



4290882455



4284569431



4288741380



4280352769

Inverse Universe

The Inverse Universe completely reimagines the original color for something new.



4290877336



4294621626



4288130497



4284569431



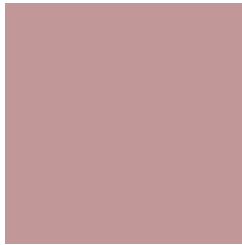
4288741380



4280352769

Previews

White Background



This preview shows how the Android color 4290877336 looks on a white background.

Color Contrast Check

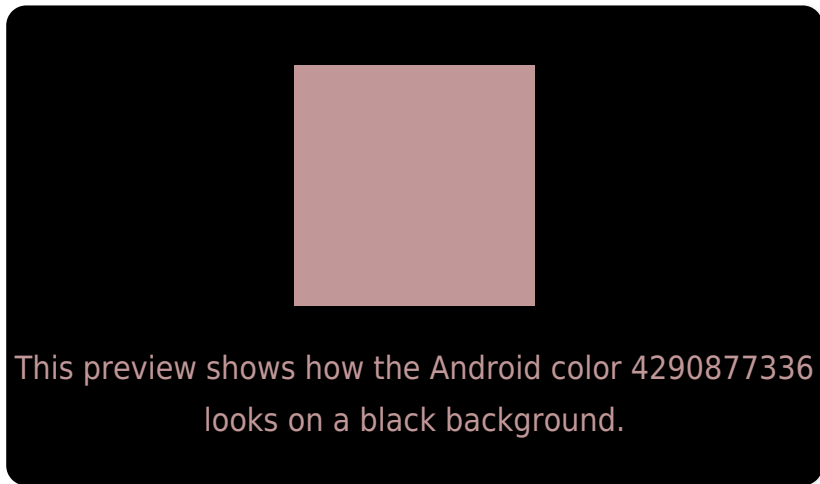
Large Text (above 18pt) WCAG AA × Fail

Any Text WCAG AA × Fail

Large Text (above 18pt) WCAG AAA × Fail

Any Text WCAG AAA × Fail

Black Background



Color Contrast Check

Large Text (above 18pt) WCAG AA ✓ Pass

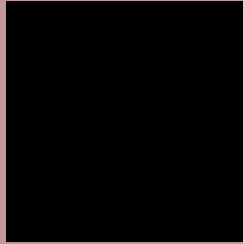
Any Text WCAG AA ✓ Pass

Large Text (above 18pt) WCAG AAA ✓ Pass

Any Text WCAG AAA ✓ Pass

If you want to check with other color combinations, try the [Color Contrast Checker](#).

Android 4290877336 Background



This preview shows how black text looks on a background with the Android color 4290877336.



This preview shows how white text looks on a background with the Android color 4290877336.

Color Blindness Simulation

Color vision deficiency is a very complex topic, and I could not describe the different causes any better than Wikipedia does, so if you want to learn more, you should check out their [article about color blindness](#).


Dichromacy



Original Color
4290877336

Protanopia
4289044893

Deuteranopia
4290092183



Tritanopia
4290942625

Trichromacy



Original Color
4290877336

Protanomaly
4289699227

Deuteranomaly
4290353815

Tritanomaly
4290942622

Monochromacy



Original Color
4290877336

Achromatopsia
4288980132

Achromatomaly
4289699744

CSS Examples

Text

The CSS property to change the color of the text to Android 4290877336 is called "color". The color property can be set on classes, ids or directly on the HTML element.

This example shows how text in the color `rgb(193, 151, 152)` looks like.

```
.text, #text, p{  
    color:rgb(193, 151, 152)  
}
```

If you want to add a text shadow in that color use the text-shadow property, you can generate a text shadow directly with our [CSS Text Shadow Generator](#).

Here you see how black text with a 4 pixel rgb(193, 151, 152) colored shadow looks like.

```
.shadow{ text-shadow: 4px 4px 2px rgb(193, 151, 152) }
```

Border

The CSS property to change the border of an element to Android 4290877336 is called "border". The border property can be set on classes, ids or directly on the HTML element.

This example shows the color as border, it can be applied via the CSS property "border" or "border-color".

```
.border, #border, table{ border:4px solid rgb(193, 151, 152) }
```

If only the border color should be changed use the property `border-color`.

```
.border{ border-color:rgb(193, 151, 152) }
```

If you want to add a box shadow in that color use:

Here you see how a box with a 4 pixel `rgb(193, 151, 152)` colored shadow looks like.

```
.boxshadow{ -moz-box-shadow:4px 4px 4px  
4px rgb(193, 151, 152); -webkit-box-  
shadow:4px 4px 4px 4px rgb(193, 151, 152);  
box-shadow:4px 4px 4px 4px rgb(193, 151,  
152) }
```

Background

The CSS property to change the background color of an element to Android 4290877336 is called "background". The background property can be set on classes, ids or directly on the HTML element.

```
.background, #background, body{  
background: rgb(193, 151, 152) }
```

If only the background color should be changed can be used:

```
.background{ background-color: rgb(193,  
151, 152) }
```

This example shows the color as background, it is applied via the CSS property "background".

To optimize and compress your CSS code, you can use our [online CSS compressor and optimizer](#) based on csstidy. If you want to create a linear or radial gradient as background or border, check our [CSS Gradient Generator](#).

Hey! You found this booklet interesting? Support Converting Colors with the new Membership Option!

The pro membership hides all ads, plus gives you double the colors in the color bucket, and more awesome pro features!

[Learn more, Memberships starting at \\$2.50/m!](#)

**Follow me
on Twitter!**

@ConvertingColor