

# Converting Colors

Android(4290878877)

Have a look what the booklet for  
Android(4290878877) contains.

<b>Android(4290878877)</b> .....	3
<b><i>Conversions</i></b> .....	4
<b><i>Details</i></b> .....	6
<b><i>Harmonies</i></b> .....	11
<b><i>Previews</i></b> .....	23
<b><i>Color Blindness Simulation</i></b> .....	26
<b><i>CSS Examples</i></b> .....	29

# **Color**

**Android(4290878877)**

# Conversions

## Conversions Part 1

<b>Format</b>	<b>Color</b>
Hex	C19D9D
RGB	193, 157, 157
RGB Percent	76%, 62%, 62%
CMY	0.2431, 0.3843, 0.3843
CMYK	0.00, 0.19, 0.19, 0.24
HSL	0°, 22%, 69%
HSV	0°, 19%, 76%
XYZ	40.1351, 37.8857, 37.0956
YIQ	167.7640, 21.4560, 7.6320

# Conversions

## Conversions Part 2

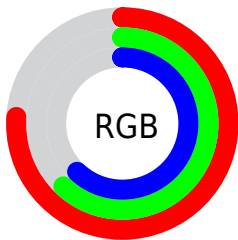
Format	Color
<a href="#">RYB</a>	<a href="#">193, 157, 157</a>
Decimal	<a href="#">12688797</a>
CIELab	<a href="#">67.94, 13.32, 5.03</a>
CIELCh	<a href="#">68, 14.240, 20.695</a>
Yxy	<a href="#">37.8857, 0.3486, 0.3291</a>
Android (android.graphics.Color)	<a href="#">4290878877</a> ( <a href="#">0xFFC19D9D</a> )
YUV	<a href="#">167.7640, -5.3067, 22.1320</a>
Hunter-Lab	<a href="#">61.5514, 8.6775, 7.3532</a>

# Details

The Android color `4290878877` is a light color, and the websafe version is hex `CC9999`. A complement of this color would be `4288528833`, and the grayscale version is `4289243304`.

A 20% lighter version of the original color is `4294628564`, and `4287326826` is the 20% darker color. If you saturate the color by 10%, you get `4290873994`, and if you desaturate by 10%, it is `4290883760`.

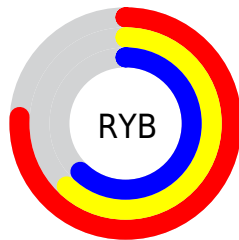
# Distribution



Red (76%)

Green (62%)

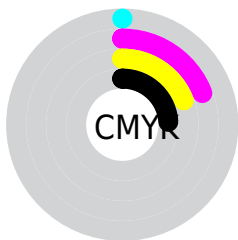
Blue (62%)



Red (76%)

Yellow (62%)

Blue (62%)

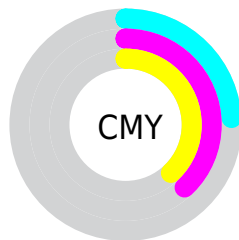


Cyan (0%)

Magenta (19%)

Yellow (19%)

Black (24%)



Cyan (24%)

Magenta (38%)

Yellow (38%)

# Brightness & Saturation Gradients

These gradients show how the Android color 4290878877 changes by changing the brightness by 10 percent. The first figure shows a shift by +10% for each color and the second figure -10%.

Similar to the brightness gradients but the following saturation gradients show a change of the Android color 4290878877 by changing the saturation by 10% instead.



 4290878877

 4290878877

4294967295

 4289102723

 4294628564

 4287326826

 4294963440

 4285616466

 4283972155

 4282393637

 4280881168

 4278910976

 4278190080

 4290878877

 4290878877

 4290873994

 4290883760

 4290868854

 4290888900

 4290863971

 4290893783

 4290859088

 4290898666

 4290854205

 4290903806

 4290849065

 4290904063

 4290844182

 4290839299

 4290838528

# Harmonies

## Analogous

The Analogous color harmony consists of three colors that are next to each other on the color wheel.



4290616746



4290878877



4290617234

# Triad

The Triadic color harmony groups three colors that are evenly spaced from another and form a triangle on the color wheel.



4290878877



4288129941



4287867071

# Complementary

The Complementary color scheme is a pair of colors which are on the opposite of each other on the color wheel.



4290878877



4288528833

# Split Complementary

Split-complementary colors differ from the complementary color scheme. The scheme consists of three colors, the original color and two neighbors of the complement color.



4287081401



4290878877



4287344033

# Square

The Square scheme is like the rectangle color scheme, but the four colors are evenly spaced on the color wheel.



4290878877



4289111949



4286885294



4288914621

# Rectangle

The Rectangle color scheme consists of four colors that form a rectangle on the color wheel.



4290878877



4290290318



4286885294



4287539645

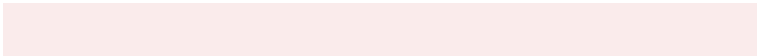


# Sweetspot

The Sweet Spot groups the original color and five complimentary colors.



4290878877



4294634475



4290878913



4286411892



4294769916



4286414205



# Same Dimension

The Same Dimension uses a secret algorithm to generate beautiful new colors.



4290878877



4294624195



4290883485



4284569431



4288741376



4280352768



# Inverse Universe

The Inverse Universe completely reimagines the original color for something new.



4288528833



4291033850



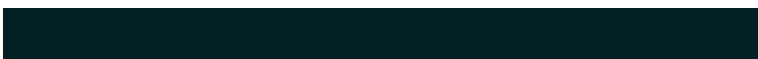
4288524225



4283916641



4278231457

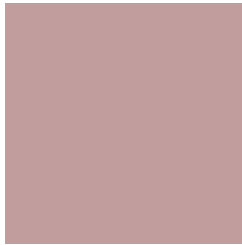


4278198561



# Previews

## White Background



This preview shows how the Android color 4290878877 looks on a white background.

## Color Contrast Check

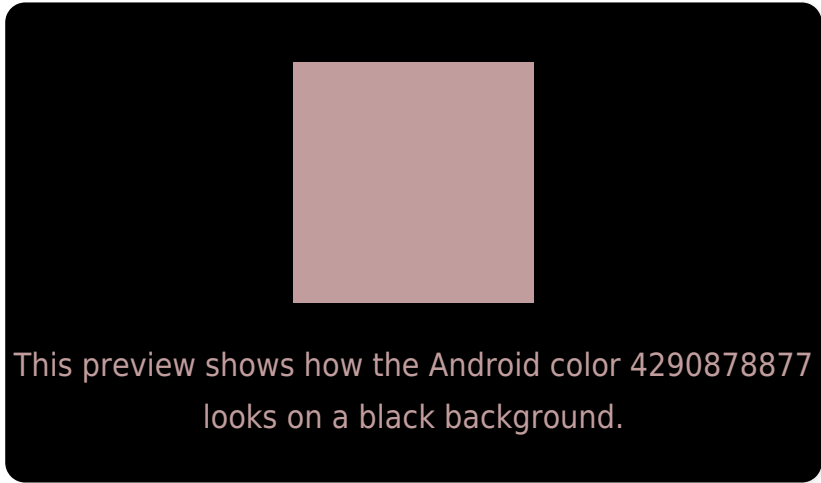
Large Text (above 18pt) WCAG AA × Fail

Any Text WCAG AA × Fail

Large Text (above 18pt) WCAG AAA × Fail

Any Text WCAG AAA × Fail

# Black Background



## Color Contrast Check

Large Text (above 18pt) WCAG AA ✓ Pass

Any Text WCAG AA ✓ Pass

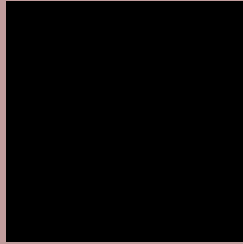
Large Text (above 18pt) WCAG AAA ✓ Pass

Any Text WCAG AAA ✓ Pass

If you want to check with other color combinations, try the [Color Contrast Checker](#).



# Android 4290878877 Background



This preview shows how black text looks on a background with the Android color 4290878877.




This preview shows how white text looks on a background with the Android color 4290878877.

# Color Blindness Simulation

Color vision deficiency is a very complex topic, and I could not describe the different causes any better than Wikipedia does, so if you want to learn more, you should check out their [article about color blindness](#).

## Dichromacy





**Tritanopia**  
4290943911

# Trichromacy



**Original Color**  
4290878877

**Protanomaly**  
4289897120

**Deuteranomaly**  
4290551708

**Tritanomaly**  
4290944163

# Monochromacy



**Original Color**  
4290878877

**Achromatopsia**  
4289243304

**Achromatomaly**  
4289832100

# CSS Examples

## Text

The CSS property to change the color of the text to Android 4290878877 is called "color". The color property can be set on classes, ids or directly on the HTML element.

This example shows how text in the color `rgb(193, 157, 157)` looks like.

```
.text, #text, p{  
    color:rgb(193, 157, 157)  
}
```

If you want to add a text shadow in that color use the text-shadow property, you can generate a text shadow directly with our [CSS Text Shadow Generator](#).

Here you see how black text with a 4 pixel rgb(193, 157, 157) colored shadow looks like.

```
.shadow{ text-shadow: 4px 4px 2px rgb(193, 157, 157) }
```

## Border

The CSS property to change the border of an element to Android 4290878877 is called "border". The border property can be set on classes, ids or directly on the HTML element.

This example shows the color as border, it can be applied via the CSS property "border" or "border-color".

```
.border, #border, table{ border:4px solid rgb(193, 157, 157) }
```

If only the border color should be changed use the property `border-color`.

```
.border{ border-color:rgb(193, 157, 157) }
```

If you want to add a box shadow in that color use:

Here you see how a box with a 4 pixel `rgb(193, 157, 157)` colored shadow looks like.

```
.boxshadow{ -moz-box-shadow:4px 4px 4px  
4px rgb(193, 157, 157); -webkit-box-  
shadow:4px 4px 4px 4px rgb(193, 157, 157);  
box-shadow:4px 4px 4px 4px rgb(193, 157,  
157) }
```

# Background

The CSS property to change the background color of an element to Android 4290878877 is called "background". The background property can be set on classes, ids or directly on the HTML element.

```
.background, #background, body{  
background: rgb(193, 157, 157) }
```

If only the background color should be changed can be used:

```
.background{ background-color: rgb(193,  
157, 157) }
```

This example shows the color as background, it is applied via the CSS property "background".

To optimize and compress your CSS code, you can use our [online CSS compressor and optimizer](#) based on csstidy. If you want to create a linear or radial gradient as background or border, check our [CSS Gradient Generator](#).



Hey! You found this booklet interesting? Support Converting Colors with the new Membership Option!

The pro membership hides all ads, plus gives you double the colors in the color bucket, and more awesome pro features!

**[Learn more, Memberships starting at \\$2.50/m!](#)**

**Follow me  
on Twitter!**

@ConvertingColor