

Converting Colors

Android(4290879347)

Have a look what the booklet for
Android(4290879347) contains.

Android(4290879347)	3
<i>Conversions</i>	4
<i>Details</i>	6
<i>Harmonies</i>	11
<i>Previews</i>	23
<i>Color Blindness Simulation</i>	26
<i>CSS Examples</i>	29

Color

Android(4290879347)

Conversions

Conversions Part 1

Format	Color
Hex	C19F73
RGB	193, 159, 115
RGB Percent	76%, 62%, 45%
CMY	0.2431, 0.3765, 0.5490
CMYK	0.00, 0.18, 0.40, 0.24
HSL	34°, 39%, 60%
HSV	34°, 40%, 76%
XYZ	37.4850, 37.3715, 21.4574
YIQ	164.1500, 34.3880, -6.4760

Conversions

Conversions Part 2

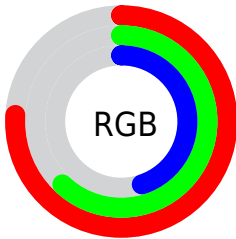
Format	Color
RYB	175, 193, 115
Decimal	12689267
CIELab	67.55, 6.52, 27.67
CIElCh	68, 28.431, 76.742
Yxy	37.3715, 0.3892, 0.3880
Android (android.graphics.Color)	4290879347 (0xFFC19F73)
YUV	164.1500, -24.2310, 25.3014
Hunter-Lab	61.1323, 2.4708, 21.9818

Details

The Android color `4290879347` is a light color, and the websafe version is hex `CC9966`. A complement of this color would be `4285765057`, and the grayscale version is `4288980132`.

A 20% lighter version of the original color is `4294694567`, and `4287261762` is the 20% darker color. If you saturate the color by 10%, you get `4290877280`, and if you desaturate by 10%, it is `4290881414`.

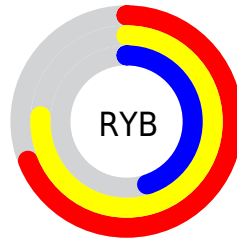
Distribution



Red (76%)

Green (62%)

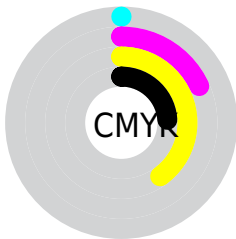
Blue (45%)



Red (69%)

Yellow (76%)

Blue (45%)

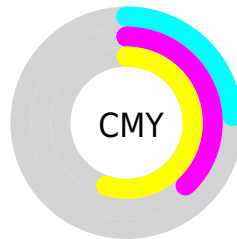


Cyan (0%)

Magenta (18%)

Yellow (40%)

Black (24%)



Cyan (24%)

Magenta (38%)

Yellow (55%)

Brightness & Saturation Gradients

These gradients show how the Android color 4290879347 changes by changing the brightness by 10 percent. The first figure shows a shift by +10% for each color and the second figure -10%.

Similar to the brightness gradients but the following saturation gradients show a change of the Android color 4290879347 by changing the saturation by 10% instead.



4290879347



4290879347

4294967295



4289037658



4294694567



4287261762



4294963907



4285486123



4294967263



4283841557



4294967291



4282197760



4280619776



4278190080



4290879347



4290879347



4290877280



4290881414

■ 4290874956

■ 4290883738

■ 4290872889

■ 4290885805

■ 4290870566

■ 4290888128

■ 4290868499

■ 4290890195

■ 4290866432

■ 4290892263

■ 4290894586

■ 4290896639

■ 4290898943

Harmonies

Analogous

The Analogous color harmony consists of three colors that are next to each other on the color wheel.



4291991424



4290879347



4289242995

Triad

The Triadic color harmony groups three colors that are evenly spaced from another and form a triangle on the color wheel.



4290879347



4283937714



4290419144

Complementary

The Complementary color scheme is a pair of colors which are on the opposite of each other on the color wheel.



4290879347



4285765057

Split Complementary

Split-complementary colors differ from the complementary color scheme. The scheme consists of three colors, the original color and two neighbors of the complement color.



4288193237



4290879347



4283936969

Square

The Square scheme is like the rectangle color scheme, but the four colors are evenly spaced on the color wheel.



4290879347



4285444760



4285770454



4291859377

Rectangle

The Rectangle color scheme consists of four colors that form a rectangle on the color wheel.



4290879347



4287999099



4285770454



4289764558

Sweetspot

The Sweet Spot groups the original color and five complimentary colors.



4290879347



4294634972



4290868118



4286412139



4294769916



4286414205

Same Dimension

The Same Dimension uses a secret algorithm to generate beautiful new colors.



4290879347



4294624898



4290625907



4284570967



4288764672



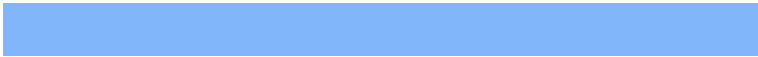
4280357632

Inverse Universe

The Inverse Universe completely reimagines the original color for something new.



4285765057



4286756602



4286018497



4283915105



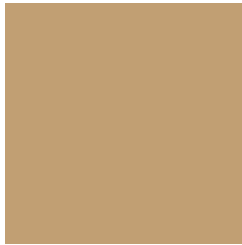
4278208161



4278193697

Previews

White Background



This preview shows how the Android color 4290879347 looks on a white background.

Color Contrast Check

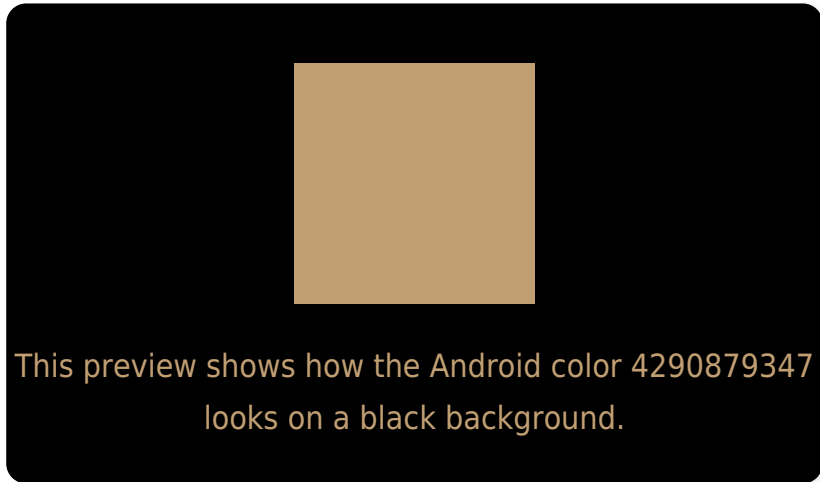
Large Text (above 18pt) WCAG AA × Fail

Any Text WCAG AA × Fail

Large Text (above 18pt) WCAG AAA × Fail

Any Text WCAG AAA × Fail

Black Background



Color Contrast Check

Large Text (above 18pt) WCAG AA ✓ Pass

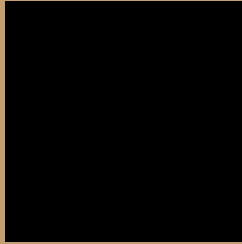
Any Text WCAG AA ✓ Pass

Large Text (above 18pt) WCAG AAA ✓ Pass

Any Text WCAG AAA ✓ Pass

If you want to check with other color combinations, try the [Color Contrast Checker](#).

Android 4290879347 Background



This preview shows how black text looks on a background with the Android color 4290879347.



This preview shows how white text looks on a background with the Android color 4290879347.

Color Blindness Simulation

Color vision deficiency is a very complex topic, and I could not describe the different causes any better than Wikipedia does, so if you want to learn more, you should check out their [article about color blindness](#).


Dichromacy



Original Color
4290879347

Protanopia
4289832309

Deuteranopia
4291075699



Tritanopia
4291205540

Trichromacy



Original Color
4290879347

Protanomaly
4290225012

Deuteranomaly
4291010163

Tritanomaly
4291074962

Monochromacy



Original Color
4290879347

Achromatopsia
4288980132

Achromatomaly
4289700498

CSS Examples

Text

The CSS property to change the color of the text to Android 4290879347 is called "color". The color property can be set on classes, ids or directly on the HTML element.

This example shows how text in the color `rgb(193, 159, 115)` looks like.

```
.text, #text, p{  
    color:rgb(193, 159, 115)  
}
```

If you want to add a text shadow in that color use the text-shadow property, you can generate a text shadow directly with our [CSS Text Shadow Generator](#).

Here you see how black text with a 4 pixel rgb(193, 159, 115) colored shadow looks like.

```
.shadow{ text-shadow: 4px 4px 2px rgb(193, 159, 115) }
```

Border

The CSS property to change the border of an element to Android 4290879347 is called "border". The border property can be set on classes, ids or directly on the HTML element.

This example shows the color as border, it can be applied via the CSS property "border" or "border-color".

```
.border, #border, table{ border:4px solid rgb(193, 159, 115) }
```

If only the border color should be changed use the property `border-color`.

```
.border{ border-color:rgb(193, 159, 115) }
```

If you want to add a box shadow in that color use:

Here you see how a box with a 4 pixel `rgb(193, 159, 115)` colored shadow looks like.

```
.boxshadow{ -moz-box-shadow:4px 4px 4px  
4px rgb(193, 159, 115); -webkit-box-  
shadow:4px 4px 4px 4px rgb(193, 159, 115);  
box-shadow:4px 4px 4px 4px rgb(193, 159,  
115) }
```

Background

The CSS property to change the background color of an element to Android 4290879347 is called "background". The background property can be set on classes, ids or directly on the HTML element.

```
.background, #background, body{  
background: rgb(193, 159, 115) }
```

If only the background color should be changed can be used:

```
.background{ background-color: rgb(193,  
159, 115) }
```

This example shows the color as background, it is applied via the CSS property "background".

To optimize and compress your CSS code, you can use our [online CSS compressor and optimizer](#) based on csstidy. If you want to create a linear or radial gradient as background or border, check our [CSS Gradient Generator](#).

Hey! You found this booklet interesting? Support Converting Colors with the new Membership Option!

The pro membership hides all ads, plus gives you double the colors in the color bucket, and more awesome pro features!

[Learn more, Memberships starting at \\$2.50/m!](#)

**Follow me
on Twitter!**

@ConvertingColor