

Converting Colors

Android(4290940769)

Have a look what the booklet for
Android(4290940769) contains.

Android(4290940769)	3
<i>Conversions</i>	4
<i>Details</i>	6
<i>Harmonies</i>	11
<i>Previews</i>	23
<i>Color Blindness Simulation</i>	26
<i>CSS Examples</i>	29

Color

Android(4290940769)

Conversions

Conversions Part 1

Format	Color
Hex	C28F61
RGB	194, 143, 97
RGB Percent	76%, 56%, 38%
CMY	0.2392, 0.4392, 0.6196
CMYK	0.00, 0.26, 0.50, 0.24
HSL	28°, 44%, 57%
HSV	28°, 50%, 76%
XYZ	34.2283, 31.9773, 15.6775
YIQ	153.0050, 45.1620, -3.4940

Conversions

Conversions Part 2

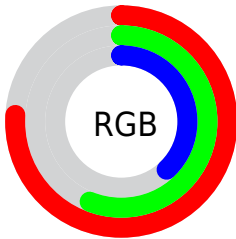
Format	Color
RYB	194, 184, 97
Decimal	12750689
CIELab	63.32, 13.81, 31.94
CIElCh	63, 34.799, 66.611
Yxy	31.9773, 0.4180, 0.3905
Android (android.graphics.Color)	4290940769 (0xFFC28F61)
YUV	153.0050, -27.6105, 35.9526
Hunter-Lab	56.5485, 9.0845, 23.1464

Details

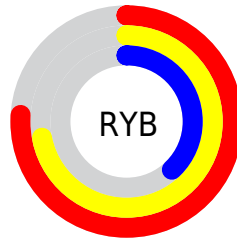
The Android color **4290940769** is a dark color, and the websafe version is hex **CC9966**. A complement of this color would be **4284585154**, and the grayscale version is **4288256409**.

A 20% lighter version of the original color is **4294821268**, and **4287257905** is the 20% darker color. If you saturate the color by 10%, you get **4290938190**, and if you desaturate by 10%, it is **4290943348**.

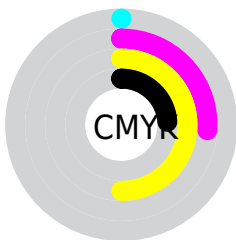
Distribution



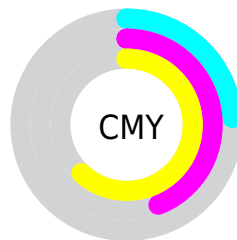
- Red (76%)
- Green (56%)
- Blue (38%)



- Red (76%)
- Yellow (72%)
- Blue (38%)



- Cyan (0%)
- Magenta (26%)
- Yellow (50%)
- Black (24%)



- Cyan (24%)
- Magenta (44%)
- Yellow (62%)

Brightness & Saturation Gradients

These gradients show how the Android color 4290940769 changes by changing the brightness by 10 percent. The first figure shows a shift by +10% for each color and the second figure -10%.

Similar to the brightness gradients but the following saturation gradients show a change of the Android color 4290940769 by changing the saturation by 10% instead.

 4290940769

 4290940769

4294967295

 4289099081

 4294821268

 4287257905

 4294959535

 4285482267

 4294966731

 4283707139

 4294967271

 4282063104

 4280484096

 4278190080

 4290940769

 4290940769

 4290938190

 4290943348

 4290935610

 4290945928

 4290932775

 4290948763

 4290930195

 4290951343

 4290927616

 4290953922

 4290956501

 4290959081

 4290961916

 4290964479

Harmonies

Analogous

The Analogous color harmony consists of three colors that are next to each other on the color wheel.



4292052342



4290940769



4289174107

Triad

The Triadic color harmony groups three colors that are evenly spaced from another and form a triangle on the color wheel.



4290940769



4281641631



4289105867

Complementary

The Complementary color scheme is a pair of colors which are on the opposite of each other on the color wheel.



4290940769



4284585154

Split Complementary

Split-complementary colors differ from the complementary color scheme. The scheme consists of three colors, the original color and two neighbors of the complement color.



4286094038



4290940769



4279412925

Square

The Square scheme is like the rectangle color scheme, but the four colors are evenly spaced on the color wheel.



4290940769



4284524672



4282491857



4291200435

Rectangle

The Rectangle color scheme consists of four colors that form a rectangle on the color wheel.



4290940769



4287733857



4282491857



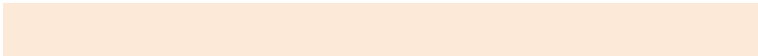
4288189393

Sweetspot

The Sweet Spot groups the original color and five complimentary colors.



4290940769



4294765015



4290929045



4286608233



4278190080



4286611584

Same Dimension

The Same Dimension uses a secret algorithm to generate beautiful new colors.



4290940769



4294749541



4290953057



4284570711



4288760832



4280356864

Inverse Universe

The Inverse Universe completely reimagines the original color for something new.



4284585154



4284855804



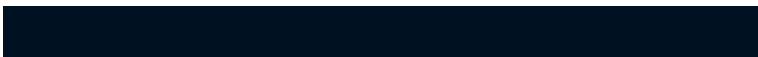
4284572866



4283915361



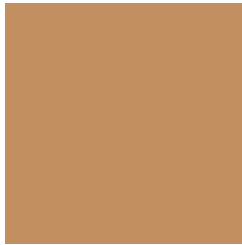
4278211745



4278194465

Previews

White Background



This preview shows how the Android color 4290940769 looks on a white background.

Color Contrast Check

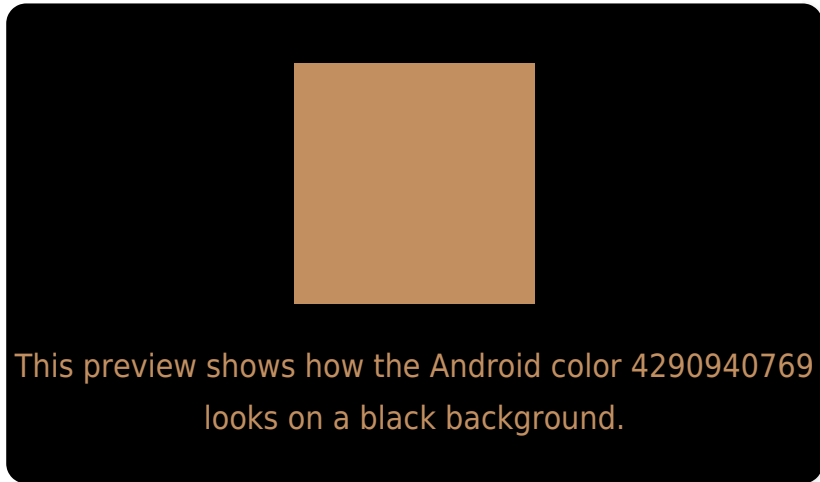
Large Text (above 18pt) WCAG AA × Fail

Any Text WCAG AA × Fail

Large Text (above 18pt) WCAG AAA × Fail

Any Text WCAG AAA × Fail

Black Background



Color Contrast Check

Large Text (above 18pt) WCAG AA ✓ Pass

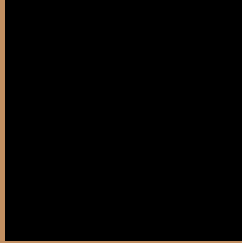
Any Text WCAG AA ✓ Pass

Large Text (above 18pt) WCAG AAA ✓ Pass

Any Text WCAG AAA ✓ Pass

If you want to check with other color combinations, try the [Color Contrast Checker](#).

Android 4290940769 Background



This preview shows how black text looks on a background with the Android color 4290940769.



This preview shows how white text looks on a background with the Android color 4290940769.

Color Blindness Simulation

Color vision deficiency is a very complex topic, and I could not describe the different causes any better than Wikipedia does, so if you want to learn more, you should check out their [article about color blindness](#).

Dichromacy



Original Color
4290940769

Protanopia
4289174117

Deuteranopia
4290417504

Trichromacy



Original Color
4290940769

Protanomaly
4289828452

Deuteranomaly
4290613856

Tritanomaly
4291136385

Monochromacy



Original Color
4290940769

Achromatopsia
4288256409

Achromatomaly
4289238405

CSS Examples

Text

The CSS property to change the color of the text to Android 4290940769 is called "color". The color property can be set on classes, ids or directly on the HTML element.

This example shows how text in the color `rgb(194, 143, 97)` looks like.

```
.text, #text, p{  
    color:rgb(194, 143, 97)  
}
```

If you want to add a text shadow in that color use the text-shadow property, you can generate a text shadow directly with our [CSS Text Shadow Generator](#).

Here you see how black text with a 4 pixel rgb(194, 143, 97) colored shadow looks like.

```
.shadow{ text-shadow: 4px 4px 2px rgb(194, 143, 97) }
```

Border

The CSS property to change the border of an element to Android 4290940769 is called "border". The border property can be set on classes, ids or directly on the HTML element.

This example shows the color as border, it can be applied via the CSS property "border" or "border-color".

```
.border, #border, table{ border:4px solid rgb(194, 143, 97) }
```

If only the border color should be changed use the property `border-color`.

```
.border{ border-color:rgb(194, 143, 97) }
```

If you want to add a box shadow in that color use:

Here you see how a box with a 4 pixel `rgb(194, 143, 97)` colored shadow looks like.

```
.boxshadow{ -moz-box-shadow:4px 4px 4px  
4px rgb(194, 143, 97); -webkit-box-  
shadow:4px 4px 4px 4px rgb(194, 143, 97);  
box-shadow:4px 4px 4px 4px rgb(194, 143,  
97) }
```

Background

The CSS property to change the background color of an element to Android 4290940769 is called "background". The background property can be set on classes, ids or directly on the HTML element.

```
.background, #background, body{  
background: rgb(194, 143, 97) }
```

If only the background color should be changed can be used:

```
.background{ background-color: rgb(194,  
143, 97) }
```

This example shows the color as background, it is applied via the CSS property "background".

To optimize and compress your CSS code, you can use our [online CSS compressor and optimizer](#) based on csstidy. If you want to create a linear or radial gradient as background or border, check our [CSS Gradient Generator](#).

Hey! You found this booklet interesting? Support Converting Colors with the new Membership Option!

The pro membership hides all ads, plus gives you double the colors in the color bucket, and more awesome pro features!

[Learn more, Memberships starting at \\$2.50/m!](#)

**Follow me
on Twitter!**

@ConvertingColor