

Converting Colors

Android(4290942605)

Have a look what the booklet for
Android(4290942605) contains.

Android(4290942605)	3
<i>Conversions</i>	4
<i>Details</i>	6
<i>Harmonies</i>	11
<i>Previews</i>	23
<i>Color Blindness Simulation</i>	26
<i>CSS Examples</i>	29

Color

Android(4290942605)

Conversions

Conversions Part 1

Format	Color
Hex	C2968D
RGB	194, 150, 141
RGB Percent	76%, 59%, 55%
CMY	0.2392, 0.4118, 0.4471
CMYK	0.00, 0.23, 0.27, 0.24
HSL	10°, 30%, 66%
HSV	10°, 27%, 76%
XYZ	37.9622, 35.2051, 29.9937
YIQ	162.1300, 29.1130, 6.5290

Conversions

Conversions Part 2

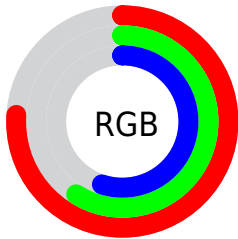
Format	Color
RYB	194, 152, 141
Decimal	12752525
CIELab	65.91, 15.17, 11.09
CIELCh	66, 18.789, 36.167
Yxy	35.2051, 0.3680, 0.3413
Android (android.graphics.Color)	4290942605 (0xFFC2968D)
YUV	162.1300, -10.4171, 27.9500
Hunter-Lab	59.3339, 10.3711, 11.5622

Details

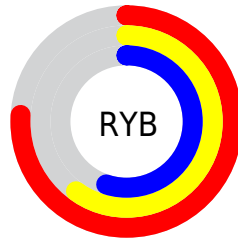
The Android color `4290942605` is a light color, and the websafe version is hex `CC9999`. A complement of this color would be `4287478210`, and the grayscale version is `4288848546`.

A 20% lighter version of the original color is `4294692035`, and `4287325019` is the 20% darker color. If you saturate the color by 10%, you get `4290938490`, and if you desaturate by 10%, it is `4290946720`.

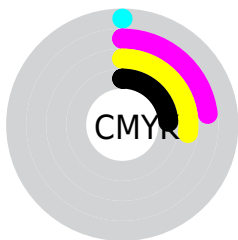
Distribution



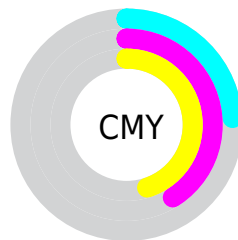
- Red (76%)
- Green (59%)
- Blue (55%)



- Red (76%)
- Yellow (60%)
- Blue (55%)



- Cyan (0%)
- Magenta (23%)
- Yellow (27%)
- Black (24%)



- Cyan (24%)
- Magenta (41%)
- Yellow (45%)

Brightness & Saturation Gradients

These gradients show how the Android color 4290942605 changes by changing the brightness by 10 percent. The first figure shows a shift by +10% for each color and the second figure -10%.

Similar to the brightness gradients but the following saturation gradients show a change of the Android color 4290942605 by changing the saturation by 10% instead.



4290942605



4290942605

4294967295



4289100915



4294692035



4287325019



4294961375



4285614915



4294967291



4283970605



4282326553



4280879104



4278190080



4290942605



4290942605



4290938490



4290946720

 4290934374

 4290950836

 4290930259

 4290954951

 4290926143

 4290959067

 4290921772

 4290963438

 4290917657

 4290967551

 4290913541

 4290969599

 4290912512

Harmonies

Analogous

The Analogous color harmony consists of three colors that are next to each other on the color wheel.



4290942109



4290942605



4290354050

Triad

The Triadic color harmony groups three colors that are evenly spaced from another and form a triangle on the color wheel.



4290942605



4286884242



4287733953

Complementary

The Complementary color scheme is a pair of colors which are on the opposite of each other on the color wheel.



4290942605



4287478210

Split Complementary

Split-complementary colors differ from the complementary color scheme. The scheme consists of three colors, the original color and two neighbors of the complement color.



4286424766



4290942605



4285967011

Square

The Square scheme is like the rectangle color scheme, but the four colors are evenly spaced on the color wheel.



4290942605



4288128389



4285704627



4289239995

Rectangle

The Rectangle color scheme consists of four colors that form a rectangle on the color wheel.



4290942605



4289699455



4285704627



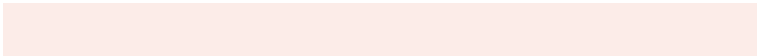
4287275713

Sweetspot

The Sweet Spot groups the original color and five complimentary colors.



4290942605



4294765800



4290940345



4286608755



4278190080



4286611584

Same Dimension

The Same Dimension uses a secret algorithm to generate beautiful new colors.



4290942605



4294752169



4290949261



4284569943



4288748288



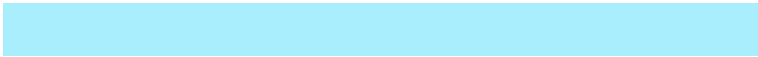
4280354304

Inverse Universe

The Inverse Universe completely reimagines the original color for something new.



4287478210



4289326844



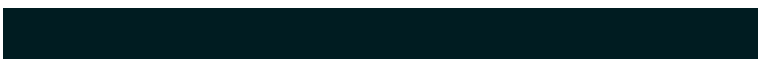
4287471554



4283916129



4278224289



4278197281

Previews

White Background



This preview shows how the Android color 4290942605 looks on a white background.

Color Contrast Check

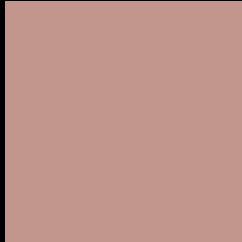
Large Text (above 18pt) WCAG AA × Fail

Any Text WCAG AA × Fail

Large Text (above 18pt) WCAG AAA × Fail

Any Text WCAG AAA × Fail

Black Background



This preview shows how the Android color 4290942605 looks on a black background.

Color Contrast Check

Large Text (above 18pt) WCAG AA ✓ Pass

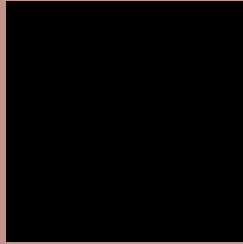
Any Text WCAG AA ✓ Pass

Large Text (above 18pt) WCAG AAA ✓ Pass

Any Text WCAG AAA ✓ Pass

If you want to check with other color combinations, try the [Color Contrast Checker](#).

Android 4290942605 Background



This preview shows how black text looks on a background with the Android color 4290942605.



This preview shows how white text looks on a background with the Android color 4290942605.

Color Blindness Simulation

Color vision deficiency is a very complex topic, and I could not describe the different causes any better than Wikipedia does, so if you want to learn more, you should check out their [article about color blindness](#).


Dichromacy



Original Color
4290942605

Protanopia
4289175698

Deuteranopia
4290222732



Tritanopia
4291072927

Trichromacy



Original Color
4290942605

Protanomaly
4289830032

Deuteranomaly
4290484620

Tritanomaly
4291007640

Monochromacy



Original Color
4290942605

Achromatopsia
4288848546

Achromatomaly
4289633946

CSS Examples

Text

The CSS property to change the color of the text to Android 4290942605 is called "color". The color property can be set on classes, ids or directly on the HTML element.

This example shows how text in the color `rgb(194, 150, 141)` looks like.

```
.text, #text, p{  
    color:rgb(194, 150, 141)  
}
```

If you want to add a text shadow in that color use the text-shadow property, you can generate a text shadow directly with our [CSS Text Shadow Generator](#).

Here you see how black text with a 4 pixel rgb(194, 150, 141) colored shadow looks like.

```
.shadow{ text-shadow: 4px 4px 2px rgb(194, 150, 141) }
```

Border

The CSS property to change the border of an element to Android 4290942605 is called "border". The border property can be set on classes, ids or directly on the HTML element.

This example shows the color as border, it can be applied via the CSS property "border" or "border-color".

```
.border, #border, table{ border:4px solid rgb(194, 150, 141) }
```

If only the border color should be changed use the property `border-color`.

```
.border{ border-color:rgb(194, 150, 141) }
```

If you want to add a box shadow in that color use:

Here you see how a box with a 4 pixel `rgb(194, 150, 141)` colored shadow looks like.

```
.boxshadow{ -moz-box-shadow:4px 4px 4px  
4px rgb(194, 150, 141); -webkit-box-  
shadow:4px 4px 4px 4px rgb(194, 150, 141);  
box-shadow:4px 4px 4px 4px rgb(194, 150,  
141) }
```

Background

The CSS property to change the background color of an element to Android 4290942605 is called "background". The background property can be set on classes, ids or directly on the HTML element.

```
.background, #background, body{  
background: rgb(194, 150, 141) }
```

If only the background color should be changed can be used:

```
.background{ background-color: rgb(194,  
150, 141) }
```

This example shows the color as background, it is applied via the CSS property "background".

To optimize and compress your CSS code, you can use our [online CSS compressor and optimizer](#) based on csstidy. If you want to create a linear or radial gradient as background or border, check our [CSS Gradient Generator](#).

Hey! You found this booklet interesting? Support Converting Colors with the new Membership Option!

The pro membership hides all ads, plus gives you double the colors in the color bucket, and more awesome pro features!

[Learn more, Memberships starting at \\$2.50/m!](#)

**Follow me
on Twitter!**

@ConvertingColor