

# Converting Colors

Android(4290947470)

Have a look what the booklet for  
Android(4290947470) contains.

<b>Android(4290947470)</b> .....	3
<b><i>Conversions</i></b> .....	4
<b><i>Details</i></b> .....	6
<b><i>Harmonies</i></b> .....	11
<b><i>Previews</i></b> .....	23
<b><i>Color Blindness Simulation</i></b> .....	26
<b><i>CSS Examples</i></b> .....	29

# **Color**

**Android(4290947470)**

# Conversions

## Conversions Part 1

<b>Format</b>	<b>Color</b>
Hex	C2A98E
RGB	194, 169, 142
RGB Percent	76%, 66%, 56%
CMY	0.2392, 0.3373, 0.4431
CMYK	0.00, 0.13, 0.27, 0.24
HSL	31°, 30%, 66%
HSV	31°, 27%, 76%
XYZ	41.3186, 41.7983, 31.4813
YIQ	173.3970, 23.5670, -3.0970

# Conversions

## Conversions Part 2

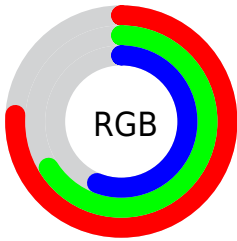
<b>Format</b>	<b>Color</b>
<b>R<sub>YB</sub></b>	190, 194, 142
Decimal	12757390
CIE <sub>Lab</sub>	70.73, 4.92, 17.29
CIE <sub>LCh</sub>	71, 17.975, 74.101
Yxy	41.7983, 0.3606, 0.3647
Android (android.graphics.Color)	4290947470 (0xFFC2A98E)
YUV	173.3970, -15.4787, 18.0688
Hunter-Lab	64.6516, 0.9384, 16.3855

# Details

The Android color `4290947470` is a light color, and the websafe version is hex `CC9999`. A complement of this color would be `4287539138`, and the grayscale version is `4289638062`.

A 20% lighter version of the original color is `4294697156`, and `4287395164` is the 20% darker color. If you saturate the color by 10%, you get `4290945147`, and if you desaturate by 10%, it is `4290949793`.

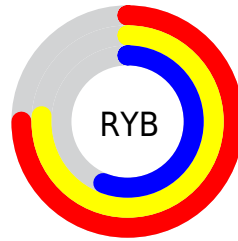
# Distribution



Red (76%)

Green (66%)

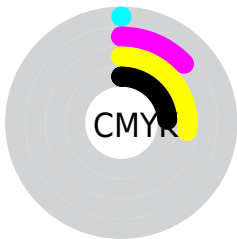
Blue (56%)



Red (75%)

Yellow (76%)

Blue (56%)

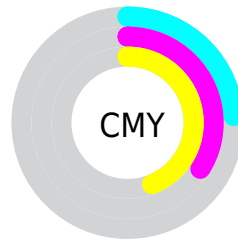


Cyan (0%)

Magenta (13%)

Yellow (27%)

Black (24%)



Cyan (24%)

Magenta (34%)

Yellow (44%)

# Brightness & Saturation Gradients

These gradients show how the Android color 4290947470 changes by changing the brightness by 10 percent. The first figure shows a shift by +10% for each color and the second figure -10%.

Similar to the brightness gradients but the following saturation gradients show a change of the Android color 4290947470 by changing the saturation by 10% instead.





4290947470



4290947470

4294967295



4289105780



4294697156



4287395164



4294966752



4285684804



4294967292



4284040494



4282396440



4280949248



4279238656



4278190080



4290947470



4290947470

 4290945147

 4290949793

 4290942567

 4290952373

 4290940244

 4290954696

 4290937920

 4290957020

 4290935341

 4290959599

 4290933018

 4290961919

 4290930694

 4290964223

 4290929920

 4290966783

 4290969087

# Harmonies

## Analogous

The Analogous color harmony consists of three colors that are next to each other on the color wheel.



4291667095



4290947470



4289900173

# Triad

The Triadic color harmony groups three colors that are evenly spaced from another and form a triangle on the color wheel.



4290947470



4286822324



4290356933

# Complementary

The Complementary color scheme is a pair of colors which are on the opposite of each other on the color wheel.



4290947470



4287539138

# Split Complementary

Split-complementary colors differ from the complementary color scheme. The scheme consists of three colors, the original color and two neighbors of the complement color.



4289047757



4290947470



4286821827

# Square

The Square scheme is like the rectangle color scheme, but the four colors are evenly spaced on the color wheel.



4290947470



4287542948



4287672780



4291404726

# Rectangle

The Rectangle color scheme consists of four colors that form a rectangle on the color wheel.



4290947470



4289049234



4287672780



4289964232

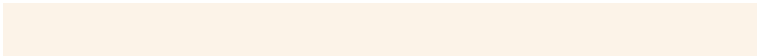


# Sweetspot

The Sweet Spot groups the original color and five complimentary colors.



4290947470



4294767592



4290940583



4286609779



4278190080



4286611584



# Same Dimension

The Same Dimension uses a secret algorithm to generate beautiful new colors.



4290947470



4294760108



4290888334



4284570711



4288762624



4280357120



# Inverse Universe

The Inverse Universe completely reimagines the original color for something new.



4287539138



4289516540



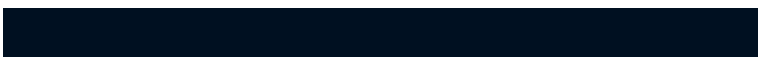
4287598274



4283915361



4278209953

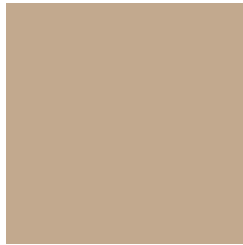


4278194209



# Previews

## White Background



This preview shows how the Android color 4290947470 looks on a white background.

## Color Contrast Check

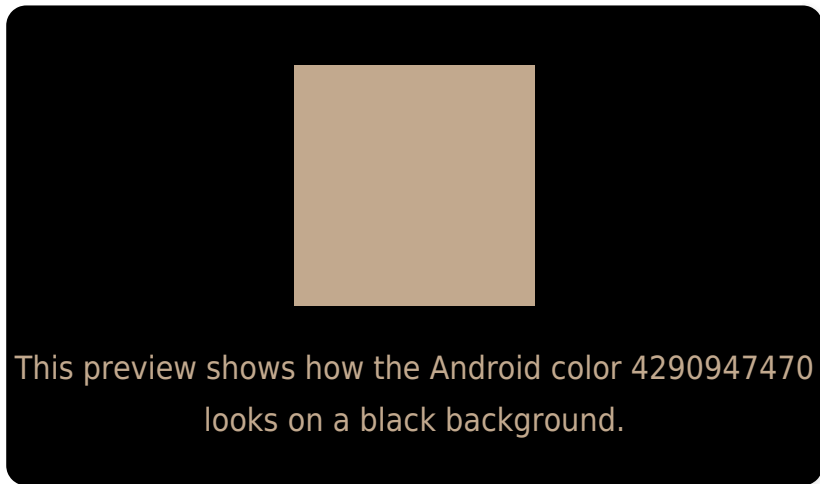
Large Text (above 18pt) WCAG AA × Fail

Any Text WCAG AA × Fail

Large Text (above 18pt) WCAG AAA × Fail

Any Text WCAG AAA × Fail

# Black Background



## Color Contrast Check

Large Text (above 18pt) WCAG AA ✓ Pass

Any Text WCAG AA ✓ Pass

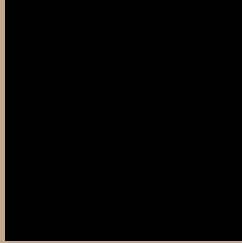
Large Text (above 18pt) WCAG AAA ✓ Pass

Any Text WCAG AAA ✓ Pass

If you want to check with other color combinations, try the [Color Contrast Checker](#).



# Android 4290947470 Background



This preview shows how black text looks on a background with the Android color 4290947470.

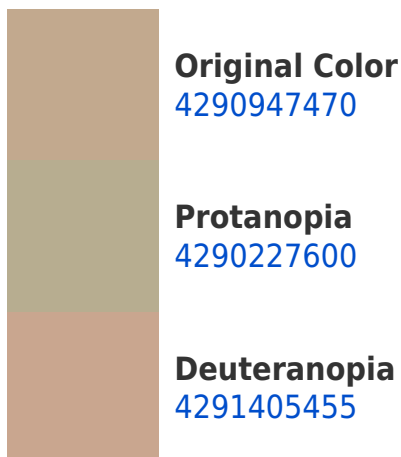


This preview shows how white text looks on a background with the Android color 4290947470.

# Color Blindness Simulation

Color vision deficiency is a very complex topic, and I could not describe the different causes any better than Wikipedia does, so if you want to learn more, you should check out their [article about color blindness](#).

## Dichromacy





**Tritanopia**  
4291208369

# Trichromacy



**Original Color**

4290947470

**Protanomaly**

4290489487

**Deuteranomaly**

4291209103

**Tritanomaly**

4291143332

# Monochromacy



**Original Color**

4290947470

**Achromatopsia**

4289572269

**Achromatomaly**

4290096290

# CSS Examples

## Text

The CSS property to change the color of the text to Android 4290947470 is called "color". The color property can be set on classes, ids or directly on the HTML element.

This example shows how text in the color `rgb(194, 169, 142)` looks like.

```
.text, #text, p{  
    color:rgb(194, 169, 142)  
}
```

If you want to add a text shadow in that color use the text-shadow property, you can generate a text shadow directly with our [CSS Text Shadow Generator](#).

Here you see how black text with a 4 pixel rgb(194, 169, 142) colored shadow looks like.

```
.shadow{ text-shadow: 4px 4px 2px rgb(194, 169, 142) }
```

## Border

The CSS property to change the border of an element to Android 4290947470 is called "border". The border property can be set on classes, ids or directly on the HTML element.

This example shows the color as border, it can be applied via the CSS property "border" or "border-color".

```
.border, #border, table{ border:4px solid rgb(194, 169, 142) }
```

If only the border color should be changed use the property `border-color`.

```
.border{ border-color:rgb(194, 169, 142) }
```

If you want to add a box shadow in that color use:

Here you see how a box with a 4 pixel `rgb(194, 169, 142)` colored shadow looks like.

```
.boxshadow{ -moz-box-shadow:4px 4px 4px 4px rgb(194, 169, 142); -webkit-box-shadow:4px 4px 4px 4px rgb(194, 169, 142); box-shadow:4px 4px 4px 4px rgb(194, 169, 142) }
```

# Background

The CSS property to change the background color of an element to Android 4290947470 is called "background". The background property can be set on classes, ids or directly on the HTML element.

```
.background, #background, body{  
background: rgb(194, 169, 142) }
```

If only the background color should be changed can be used:

```
.background{ background-color: rgb(194,  
169, 142) }
```

This example shows the color as background, it is applied via the CSS property "background".

To optimize and compress your CSS code, you can use our [online CSS compressor and optimizer](#) based on csstidy. If you want to create a linear or radial gradient as background or border, check our [CSS Gradient Generator](#).



Hey! You found this booklet interesting? Support Converting Colors with the new Membership Option!

The pro membership hides all ads, plus gives you double the colors in the color bucket, and more awesome pro features!

**[Learn more, Memberships starting at \\$2.50/m!](#)**

**Follow me  
on Twitter!**

@ConvertingColor