

Converting Colors

Android(4291005016)

Have a look what the booklet for
Android(4291005016) contains.

Android(4291005016)	3
<i>Conversions</i>	4
<i>Details</i>	6
<i>Harmonies</i>	11
<i>Previews</i>	23
<i>Color Blindness Simulation</i>	26
<i>CSS Examples</i>	29

Color

Android(4291005016)

Conversions

Conversions Part 1

Format	Color
Hex	C38A58
RGB	195, 138, 88
RGB Percent	76%, 54%, 35%
CMY	0.2353, 0.4588, 0.6549
CMYK	0.00, 0.29, 0.55, 0.24
HSL	28°, 47%, 55%
HSV	28°, 55%, 76%
XYZ	33.3556, 30.4836, 13.3584
YIQ	149.3430, 50.0220, -3.4660

Conversions

Conversions Part 2

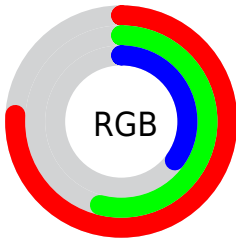
Format	Color
RYB	195, 182, 88
Decimal	12814936
CIELab	62.07, 16.17, 35.22
CIELCh	62, 38.759, 65.336
Yxy	30.4836, 0.4321, 0.3949
Android (android.graphics.Color)	4291005016 (0xFFC38A58)
YUV	149.3430, -30.2421, 40.0412
Hunter-Lab	55.2120, 11.2175, 24.3033

Details

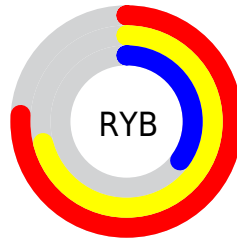
The Android color `4291005016` is a dark color, and the websafe version is hex `CC9966`. The color can be described as middle muted orange. A complement of this color would be `4283994563`, and the grayscale version is `4288059030`.

A 20% lighter version of the original color is `4294885515`, and `4287256617` is the 20% darker color. If you saturate the color by 10%, you get `4291002437`, and if you desaturate by 10%, it is `4291007596`.

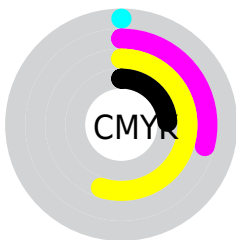
Distribution



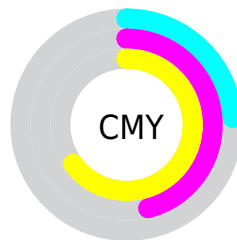
- Red (76%)
- Green (54%)
- Blue (35%)



- Red (76%)
- Yellow (71%)
- Blue (35%)



- Cyan (0%)
- Magenta (29%)
- Yellow (55%)
- Black (24%)



- Cyan (24%)
- Magenta (46%)
- Yellow (65%)

Brightness & Saturation Gradients

These gradients show how the Android color 4291005016 changes by changing the brightness by 10 percent. The first figure shows a shift by +10% for each color and the second figure -10%.

Similar to the brightness gradients but the following saturation gradients show a change of the Android color 4291005016 by changing the saturation by 10% instead.



4291005016



4291005016

4294967295



4289097792



4294885515



4287256617



4294957990



4285480977



4294965441



4283705856



4294967261



4281996544



4294967290



4280418304



4278190080



4291005016



4291005016



4291002437



4291007596

4290999601

4291010431

4290997022

4291013011

4290994186

4291015846

4290992896

4291018426

4291021005

4291023840

4291026420

4291028991

Harmonies

Analogous

The Analogous color harmony consists of three colors that are next to each other on the color wheel.



4292181872



4291005016



4289107536

Triad

The Triadic color harmony groups three colors that are evenly spaced from another and form a triangle on the color wheel.



4291005016



4279019675



4288842702

Complementary

The Complementary color scheme is a pair of colors which are on the opposite of each other on the color wheel.



4291005016



4283994563

Split Complementary

Split-complementary colors differ from the complementary color scheme. The scheme consists of three colors, the original color and two neighbors of the complement color.



4285241306



4291005016



4278233021

Square

The Square scheme is like the rectangle color scheme, but the four colors are evenly spaced on the color wheel.



4291005016



4283868792



4279804372



4291198899

Rectangle

The Rectangle color scheme consists of four colors that form a rectangle on the color wheel.



4291005016



4287536470



4279804372



4287729620

Sweetspot

The Sweet Spot groups the original color and five complimentary colors.



4291005016



4294764500



4290992273



4286608231



4278190080



4286611584

Same Dimension

The Same Dimension uses a secret algorithm to generate beautiful new colors.



4291005016



4294747222



4291018584



4284570711



4288760576



4280356608

Inverse Universe

The Inverse Universe completely reimagines the original color for something new.



4283994563



4283871228



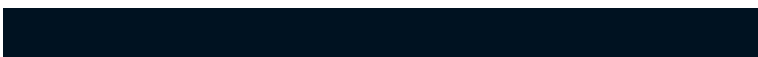
4283980995



4283915361



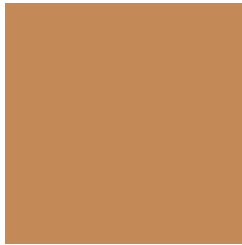
4278212257



4278194721

Previews

White Background



This preview shows how the Android color 4291005016 looks on a white background.

Color Contrast Check

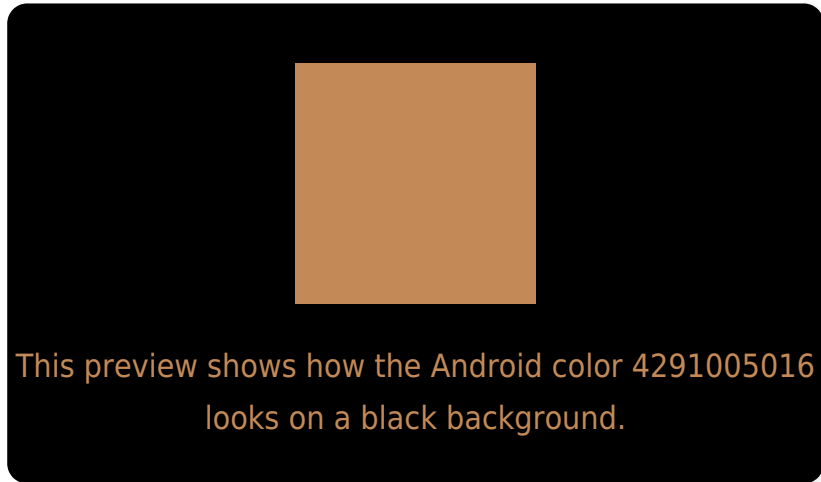
Large Text (above 18pt) WCAG AA × Fail

Any Text WCAG AA × Fail

Large Text (above 18pt) WCAG AAA × Fail

Any Text WCAG AAA × Fail

Black Background



Color Contrast Check

Large Text (above 18pt) WCAG AA ✓ Pass

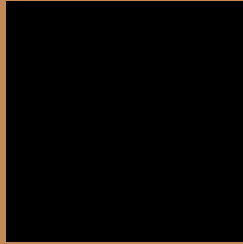
Any Text WCAG AA ✓ Pass

Large Text (above 18pt) WCAG AAA ✓ Pass

Any Text WCAG AAA ✓ Pass

If you want to check with other color combinations, try the [Color Contrast Checker](#).

Android 4291005016 Background



This preview shows how black text looks on a background with the Android color 4291005016.



This preview shows how white text looks on a background with the Android color 4291005016.

Color Blindness Simulation

Color vision deficiency is a very complex topic, and I could not describe the different causes any better than Wikipedia does, so if you want to learn more, you should check out their [article about color blindness](#).

Dichromacy



Original Color
4291005016

Protanopia
4288976477

Deuteranopia
4290219863

Trichromacy



Original Color
4291005016

Protanomaly
4289696347

Deuteranomaly
4290481495

Tritanomaly
4291200634

Monochromacy



Original Color
4291005016

Achromatopsia
4287993237

Achromatomaly
4289106303

CSS Examples

Text

The CSS property to change the color of the text to Android 4291005016 is called "color". The color property can be set on classes, ids or directly on the HTML element.

This example shows how text in the color `rgb(195, 138, 88)` looks like.

```
.text, #text, p{  
    color:rgb(195, 138, 88)  
}
```

If you want to add a text shadow in that color use the text-shadow property, you can generate a text shadow directly with our [CSS Text Shadow Generator](#).

Here you see how black text with a 4 pixel rgb(195, 138, 88) colored shadow looks like.

```
.shadow{ text-shadow: 4px 4px 2px rgb(195, 138, 88) }
```

Border

The CSS property to change the border of an element to Android 4291005016 is called "border". The border property can be set on classes, ids or directly on the HTML element.

This example shows the color as border, it can be applied via the CSS property "border" or "border-color".

```
.border, #border, table{ border:4px solid rgb(195, 138, 88) }
```

If only the border color should be changed use the property border-color.

```
.border{ border-color:rgb(195, 138, 88) }
```

If you want to add a box shadow in that color use:

Here you see how a box with a 4 pixel rgb(195, 138, 88) colored shadow looks like.

```
.boxshadow{ -moz-box-shadow:4px 4px 4px  
4px rgb(195, 138, 88); -webkit-box-  
shadow:4px 4px 4px 4px rgb(195, 138, 88);  
box-shadow:4px 4px 4px 4px rgb(195, 138,  
88) }
```

Background

The CSS property to change the background color of an element to Android 4291005016 is called "background". The background property can be set on classes, ids or directly on the HTML element.

```
.background, #background, body{  
background: rgb(195, 138, 88) }
```

If only the background color should be changed can be used:

```
.background{ background-color: rgb(195,  
138, 88) }
```

This example shows the color as background, it is applied via the CSS property "background".

To optimize and compress your CSS code, you can use our [online CSS compressor and optimizer](#) based on csstidy. If you want to create a linear or radial gradient as background or border, check our [CSS Gradient Generator](#).

Hey! You found this booklet interesting? Support Converting Colors with the new Membership Option!

The pro membership hides all ads, plus gives you double the colors in the color bucket, and more awesome pro features!

[Learn more, Memberships starting at \\$2.50/m!](#)

**Follow me
on Twitter!**

@ConvertingColor