

Converting Colors

Android(4291010706)

Have a look what the booklet for
Android(4291010706) contains.

Android(4291010706)	3
<i>Conversions</i>	4
<i>Details</i>	6
<i>Harmonies</i>	11
<i>Previews</i>	23
<i>Color Blindness Simulation</i>	26
<i>CSS Examples</i>	29

Color

Android(4291010706)

Conversions

Conversions Part 1

Format	Color
Hex	C3A092
RGB	195, 160, 146
RGB Percent	76%, 63%, 57%
CMY	0.2353, 0.3725, 0.4275
CMYK	0.00, 0.18, 0.25, 0.24
HSL	17°, 29%, 67%
HSV	17°, 25%, 76%
XYZ	40.2648, 38.8190, 32.5648
YIQ	168.8690, 25.3540, 3.0660

Conversions

Conversions Part 2

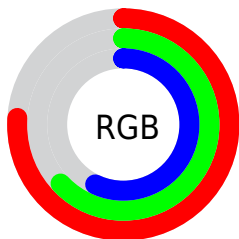
Format	Color
RYB	195, 166, 146
Decimal	12820626
CIELab	68.62, 10.78, 12.15
CIELCh	69, 16.239, 48.417
Yxy	38.8190, 0.3606, 0.3477
Android (android.graphics.Color)	4291010706 (0xFFC3A092)
YUV	168.8690, -11.2744, 22.9169
Hunter-Lab	62.3049, 6.3227, 12.6245

Details

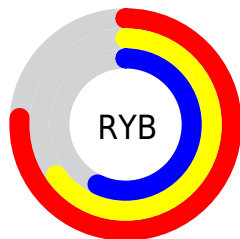
The Android color `4291010706` is a light color, and the websafe version is hex `CC9999`. A complement of this color would be `4287804867`, and the grayscale version is `4289309097`.

A 20% lighter version of the original color is `4294760392`, and `4287458400` is the 20% darker color. If you saturate the color by 10%, you get `4291007103`, and if you desaturate by 10%, it is `4291014309`.

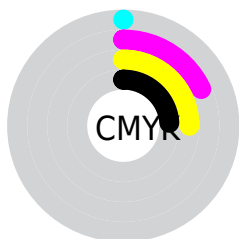
Distribution



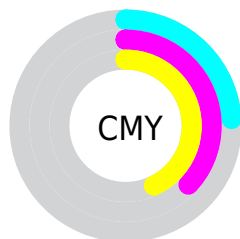
- Red (76%)
- Green (63%)
- Blue (57%)



- Red (76%)
- Yellow (65%)
- Blue (57%)



- Cyan (0%)
- Magenta (18%)
- Yellow (25%)
- Black (24%)




- Cyan (24%)
- Magenta (37%)
- Yellow (43%)

Brightness & Saturation Gradients

These gradients show how the Android color 4291010706 changes by changing the brightness by 10 percent. The first figure shows a shift by +10% for each color and the second figure -10%.

Similar to the brightness gradients but the following saturation gradients show a change of the Android color 4291010706 by changing the saturation by 10% instead.

 4291010706

 4291010706

4294967295

 4289169016

 4294760392

 4287458400

 4294964196

 4285682760

 4284038449

 4282459932

 4281012738

 4278976512

 4278190080

 4291010706

 4291010706

 4291007103

 4291014309

 4291003499

 4291017913

 4290999896

 4291021517

 4290996292

 4291025120

 4290992689

 4291028723

 4290989085

 4291032319

 4290985738

 4291035135

 4290983936

Harmonies

Analogous

The Analogous color harmony consists of three colors that are next to each other on the color wheel.



4291206559



4291010706



4290356363

Triad

The Triadic color harmony groups three colors that are evenly spaced from another and form a triangle on the color wheel.



4291010706



4287279265



4288915139

Complementary

The Complementary color scheme is a pair of colors which are on the opposite of each other on the color wheel.



4291010706



4287804867

Split Complementary

Split-complementary colors differ from the complementary color scheme. The scheme consists of three colors, the original color and two neighbors of the complement color.



4287670980



4291010706



4286689456

Square

The Square scheme is like the rectangle color scheme, but the four colors are evenly spaced on the color wheel.



4291010706



4288195988



4286820029



4290093499

Rectangle

The Rectangle color scheme consists of four colors that form a rectangle on the color wheel.



4291010706



4289702026



4286820029



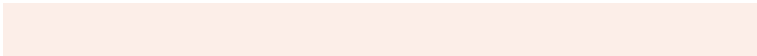
4288456644

Sweetspot

The Sweet Spot groups the original color and five complimentary colors.



4291010706



4294766312



4291007157



4286609011



4278190080



4286611584

Same Dimension

The Same Dimension uses a secret algorithm to generate beautiful new colors.



4291010706



4294756017



4291016850



4284570199



4288753152



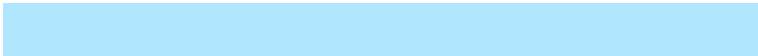
4280355072

Inverse Universe

The Inverse Universe completely reimagines the original color for something new.



4287804867



4289849340



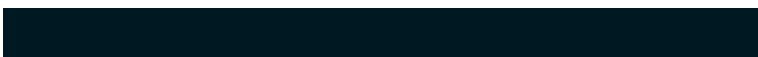
4287798723



4283915873



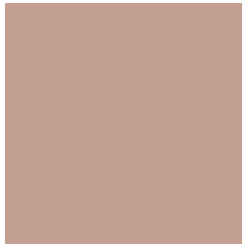
4278219681



4278196257

Previews

White Background



This preview shows how the Android color 4291010706 looks on a white background.

Color Contrast Check

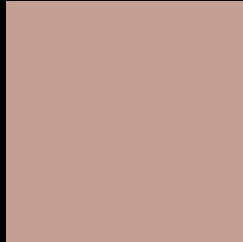
Large Text (above 18pt) WCAG AA × Fail

Any Text WCAG AA × Fail

Large Text (above 18pt) WCAG AAA × Fail

Any Text WCAG AAA × Fail

Black Background



This preview shows how the Android color 4291010706 looks on a black background.

Color Contrast Check

Large Text (above 18pt) WCAG AA ✓ Pass

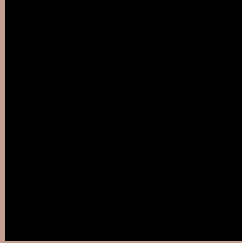
Any Text WCAG AA ✓ Pass

Large Text (above 18pt) WCAG AAA ✓ Pass

Any Text WCAG AAA ✓ Pass

If you want to check with other color combinations, try the [Color Contrast Checker](#).

Android 4291010706 Background



This preview shows how black text looks on a background with the Android color 4291010706.



This preview shows how white text looks on a background with the Android color 4291010706.

Color Blindness Simulation

Color vision deficiency is a very complex topic, and I could not describe the different causes any better than Wikipedia does, so if you want to learn more, you should check out their [article about color blindness](#).

Dichromacy



Original Color
4291010706

Protanopia
4289701782

Deuteranopia
4290814354

Trichromacy



Original Color
4291010706

Protanomaly
4290159765

Deuteranomaly
4290879890

Tritanomaly
4291141281

Monochromacy



Original Color
4291010706

Achromatopsia
4289309097

Achromatomaly
4289898145

CSS Examples

Text

The CSS property to change the color of the text to Android 4291010706 is called "color". The color property can be set on classes, ids or directly on the HTML element.

This example shows how text in the color `rgb(195, 160, 146)` looks like.

```
.text, #text, p{  
    color:rgb(195, 160, 146)  
}
```

If you want to add a text shadow in that color use the text-shadow property, you can generate a text shadow directly with our [CSS Text Shadow Generator](#).

Here you see how black text with a 4 pixel rgb(195, 160, 146) colored shadow looks like.

```
.shadow{ text-shadow: 4px 4px 2px rgb(195, 160, 146) }
```

Border

The CSS property to change the border of an element to Android 4291010706 is called "border". The border property can be set on classes, ids or directly on the HTML element.

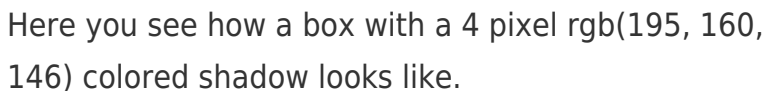
This example shows the color as border, it can be applied via the CSS property "border" or "border-color".

```
.border, #border, table{ border:4px solid rgb(195, 160, 146) }
```

If only the border color should be changed use the property `border-color`.

```
.border{ border-color:rgb(195, 160, 146) }
```

If you want to add a box shadow in that color use:



Here you see how a box with a 4 pixel `rgb(195, 160, 146)` colored shadow looks like.

```
.boxshadow{ -moz-box-shadow:4px 4px 4px 4px rgb(195, 160, 146); -webkit-box-shadow:4px 4px 4px 4px rgb(195, 160, 146); box-shadow:4px 4px 4px 4px rgb(195, 160, 146) }
```

Background

The CSS property to change the background color of an element to Android 4291010706 is called "background". The background property can be set on classes, ids or directly on the HTML element.

```
.background, #background, body{  
background: rgb(195, 160, 146) }
```

If only the background color should be changed can be used:

```
.background{ background-color: rgb(195,  
160, 146) }
```

This example shows the color as background, it is applied via the CSS property "background".

To optimize and compress your CSS code, you can use our [online CSS compressor and optimizer](#) based on csstidy. If you want to create a linear or radial gradient as background or border, check our [CSS Gradient Generator](#).

Hey! You found this booklet interesting? Support Converting Colors with the new Membership Option!

The pro membership hides all ads, plus gives you double the colors in the color bucket, and more awesome pro features!

[Learn more, Memberships starting at \\$2.50/m!](#)

**Follow me
on Twitter!**

@ConvertingColor