

Converting Colors

Android(4291013273)

Have a look what the booklet for
Android(4291013273) contains.

Android(4291013273)	3
<i>Conversions</i>	4
<i>Details</i>	6
<i>Harmonies</i>	11
<i>Previews</i>	23
<i>Color Blindness Simulation</i>	26
<i>CSS Examples</i>	29

Color

Android(4291013273)

Conversions

Conversions Part 1

Format	Color
Hex	C3AA99
RGB	195, 170, 153
RGB Percent	76%, 67%, 60%
CMY	0.2353, 0.3333, 0.4000
CMYK	0.00, 0.13, 0.22, 0.24
HSL	24°, 26%, 68%
HSV	24°, 22%, 76%
XYZ	42.6302, 42.6515, 36.1227
YIQ	175.5370, 20.3570, 0.0130

Conversions

Conversions Part 2

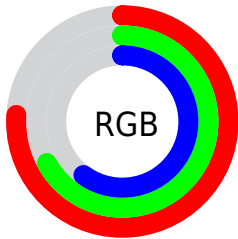
Format	Color
R_{YB}	195, 182, 153
Decimal	12823193
CIE Lab	71.32, 6.36, 12.09
CIE LCh	71, 13.667, 62.249
Yxy	42.6515, 0.3511, 0.3513
Android (android.graphics.Color)	4291013273 (0xFFC3AA99)
YUV	175.5370, -11.1107, 17.0691
Hunter-Lab	65.3081, 2.2276, 12.9216

Details

The Android color `4291013273` is a light color, and the websafe version is hex `CC9999`. A complement of this color would be `4288262851`, and the grayscale version is `4289769648`.

A 20% lighter version of the original color is `4294762959`, and `4287460966` is the 20% darker color. If you saturate the color by 10%, you get `4291010182`, and if you desaturate by 10%, it is `4291016364`.

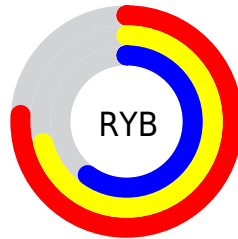
Distribution



Red (76%)

Green (67%)

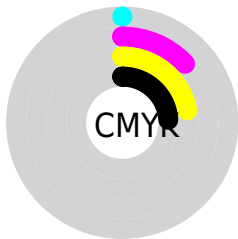
Blue (60%)



Red (76%)

Yellow (71%)

Blue (60%)

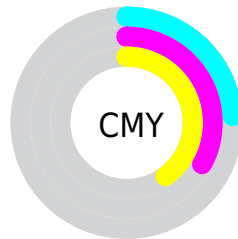


Cyan (0%)

Magenta (13%)

Yellow (22%)

Black (24%)



Cyan (24%)

Magenta (33%)


Yellow (40%)

Brightness & Saturation Gradients

These gradients show how the Android color 4291013273 changes by changing the brightness by 10 percent. The first figure shows a shift by +10% for each color and the second figure -10%.

Similar to the brightness gradients but the following saturation gradients show a change of the Android color 4291013273 by changing the saturation by 10% instead.

 4291013273

 4291013273

4294967295

 4289237119

 4294762959

 4287460966

 4294967020

 4285750606

 4284106295

 4282527522

 4281014796

 4279566336

 4278190080

 4291013273

 4291013273

 4291010182

 4291016364

 4291007346

 4291019200

 4291004255

 4291022291

 4291001419

 4291025127

 4290998328

 4291028219

 4290995236

 4291031295

 4290992401

 4291034111

 4290989824

 4291035135

Harmonies

Analogous

The Analogous color harmony consists of three colors that are next to each other on the color wheel.



4291405730



4291013273



4290293398

Triad

The Triadic color harmony groups three colors that are evenly spaced from another and form a triangle on the color wheel.



4291013273



4287805103



4289899460

Complementary

The Complementary color scheme is a pair of colors which are on the opposite of each other on the color wheel.



4291013273



4288262851

Split Complementary

Split-complementary colors differ from the complementary color scheme. The scheme consists of three colors, the original color and two neighbors of the complement color.



4288851911



4291013273



4287608251

Square

The Square scheme is like the rectangle color scheme, but the four colors are evenly spaced on the color wheel.



4291013273



4288460195



4288000964



4290816186

Rectangle

The Rectangle color scheme consists of four colors that form a rectangle on the color wheel.



4291013273



4289704344



4288000964



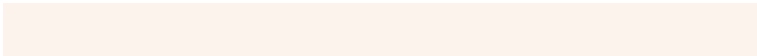
4289572294

Sweetspot

The Sweet Spot groups the original color and five complimentary colors.



4291013273



4294767597



4291008946



4286610039



4278190080



4286611584

Same Dimension

The Same Dimension uses a secret algorithm to generate beautiful new colors.



4291013273



4294759867



4291018649



4284570455



4288758016



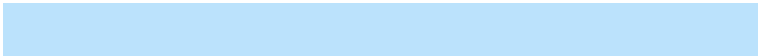
4280356096

Inverse Universe

The Inverse Universe completely reimagines the original color for something new.



4288262851



4290503420



4288257475



4283915617



4278214817



4278195233

Previews

White Background



This preview shows how the Android color 4291013273 looks on a white background.

Color Contrast Check

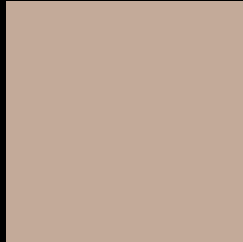
Large Text (above 18pt) WCAG AA × Fail

Any Text WCAG AA × Fail

Large Text (above 18pt) WCAG AAA × Fail

Any Text WCAG AAA × Fail

Black Background



This preview shows how the Android color 4291013273 looks on a black background.

Color Contrast Check

Large Text (above 18pt) WCAG AA ✓ Pass

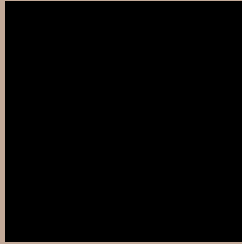
Any Text WCAG AA ✓ Pass

Large Text (above 18pt) WCAG AAA ✓ Pass

Any Text WCAG AAA ✓ Pass

If you want to check with other color combinations, try the [Color Contrast Checker](#).

Android 4291013273 Background



This preview shows how black text looks on a background with the Android color 4291013273.




This preview shows how white text looks on a background with the Android color 4291013273.

Color Blindness Simulation

Color vision deficiency is a very complex topic, and I could not describe the different causes any better than Wikipedia does, so if you want to learn more, you should check out their [article about color blindness](#).

Dichromacy





Tritanopia
4291208883

Trichromacy



Original Color
4291013273

Protanomaly
4290489754

Deuteranomaly
4291209625

Tritanomaly
4291143594

Monochromacy



Original Color
4291013273

Achromatopsia
4289769648

Achromatomaly
4290227880

CSS Examples

Text

The CSS property to change the color of the text to Android 4291013273 is called "color". The color property can be set on classes, ids or directly on the HTML element.

This example shows how text in the color `rgb(195, 170, 153)` looks like.

```
.text, #text, p{  
    color:rgb(195, 170, 153)  
}
```

If you want to add a text shadow in that color use the text-shadow property, you can generate a text shadow directly with our [CSS Text Shadow Generator](#).

Here you see how black text with a 4 pixel rgb(195, 170, 153) colored shadow looks like.

```
.shadow{ text-shadow: 4px 4px 2px rgb(195, 170, 153) }
```

Border

The CSS property to change the border of an element to Android 4291013273 is called "border". The border property can be set on classes, ids or directly on the HTML element.

This example shows the color as border, it can be applied via the CSS property "border" or "border-color".

```
.border, #border, table{ border:4px solid rgb(195, 170, 153) }
```

If only the border color should be changed use the property `border-color`.

```
.border{ border-color:rgb(195, 170, 153) }
```

If you want to add a box shadow in that color use:

Here you see how a box with a 4 pixel `rgb(195, 170, 153)` colored shadow looks like.

```
.boxshadow{ -moz-box-shadow:4px 4px 4px  
4px rgb(195, 170, 153); -webkit-box-  
shadow:4px 4px 4px 4px rgb(195, 170, 153);  
box-shadow:4px 4px 4px 4px rgb(195, 170,  
153) }
```

Background

The CSS property to change the background color of an element to Android 4291013273 is called "background". The background property can be set on classes, ids or directly on the HTML element.

```
.background, #background, body{  
background: rgb(195, 170, 153) }
```

If only the background color should be changed can be used:

```
.background{ background-color: rgb(195,  
170, 153) }
```

This example shows the color as background, it is applied via the CSS property "background".

To optimize and compress your CSS code, you can use our [online CSS compressor and optimizer](#) based on csstidy. If you want to create a linear or radial gradient as background or border, check our [CSS Gradient Generator](#).

Hey! You found this booklet interesting? Support Converting Colors with the new Membership Option!

The pro membership hides all ads, plus gives you double the colors in the color bucket, and more awesome pro features!

[Learn more, Memberships starting at \\$2.50/m!](#)

**Follow me
on Twitter!**

@ConvertingColor