

Converting Colors

Android(4291013795)

Have a look what the booklet for
Android(4291013795) contains.

Android(4291013795)	3
<i>Conversions</i>	4
<i>Details</i>	6
<i>Harmonies</i>	11
<i>Previews</i>	23
<i>Color Blindness Simulation</i>	26
<i>CSS Examples</i>	29

Color

Android(4291013795)

Conversions

Conversions Part 1

Format	Color
Hex	C3ACA3
RGB	195, 172, 163
RGB Percent	76%, 67%, 64%
CMY	0.2353, 0.3255, 0.3608
CMYK	0.00, 0.12, 0.16, 0.24
HSL	17°, 21%, 70%
HSV	17°, 16%, 76%
XYZ	43.8691, 43.7515, 40.7831
YIQ	177.8510, 16.5970, 2.0770

Conversions

Conversions Part 2

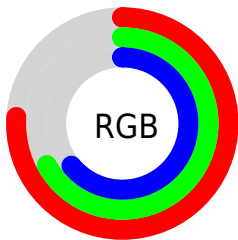
Format	Color
RYB	195, 176, 163
Decimal	12823715
CIELab	72.06, 6.83, 7.66
CIELCh	72, 10.263, 48.299
Yxy	43.7515, 0.3416, 0.3407
Android (android.graphics.Color)	4291013795 (0xFFC3ACA3)
YUV	177.8510, -7.3215, 15.0397
Hunter-Lab	66.1449, 2.6323, 9.7449

Details

The Android color `4291013795` is a light color, and the websafe version is hex `CC9999`. A complement of this color would be `4288920259`, and the grayscale version is `4289901234`.

A 20% lighter version of the original color is `4294763482`, and `4287461487` is the 20% darker color. If you saturate the color by 10%, you get `4291010192`, and if you desaturate by 10%, it is `4291017399`.

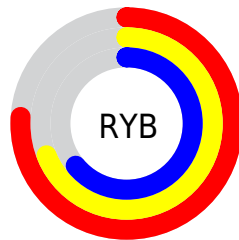
Distribution



Red (76%)

Green (67%)

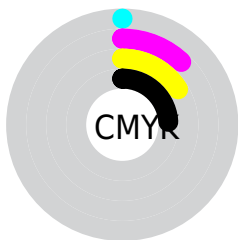
Blue (64%)



Red (76%)

Yellow (69%)

Blue (64%)

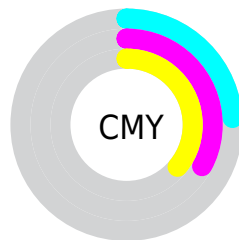


Cyan (0%)

Magenta (12%)

Yellow (16%)

Black (24%)



Cyan (24%)


Magenta (33%)


Yellow (36%)

Brightness & Saturation Gradients

These gradients show how the Android color 4291013795 changes by changing the brightness by 10 percent. The first figure shows a shift by +10% for each color and the second figure -10%.

Similar to the brightness gradients but the following saturation gradients show a change of the Android color 4291013795 by changing the saturation by 10% instead.

 4291013795

 4291013795

4294967295

 4289237385

 4294763482

 4287461487

 4294967286

 4285751127

 4284106560

 4282593578

 4281080853

 4279763456


 4278190080


 4291013795


 4291013795


 4291010192

 4291017399

 4291006588

 4291021002

 4291002985

 4291024605

 4290999381

 4291028209

 4290995778

 4291031807

 4290992174

 4291035135

 4290988570

 4290984967

 4290983680

Harmonies

Analogous

The Analogous color harmony consists of three colors that are next to each other on the color wheel.



4291144363



4291013795



4290555807

Triad

The Triadic color harmony groups three colors that are evenly spaced from another and form a triangle on the color wheel.



4291013795



4288591533



4289638338

Complementary

The Complementary color scheme is a pair of colors which are on the opposite of each other on the color wheel.



4291013795



4288920259

Split Complementary

Split-complementary colors differ from the complementary color scheme. The scheme consists of three colors, the original color and two neighbors of the complement color.



4288918467



4291013795



4288329398

Square

The Square scheme is like the rectangle color scheme, but the four colors are evenly spaced on the color wheel.



4291013795



4289180836



4288394686



4290358717

Rectangle

The Rectangle color scheme consists of four colors that form a rectangle on the color wheel.



4291013795



4290163102



4288394686



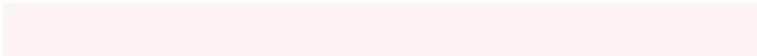
4289376707

Sweetspot

The Sweet Spot groups the original color and five complimentary colors.



4291013795



4294767600



4291011514



4286610040



4278190080



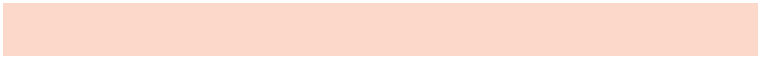
4286611584

Same Dimension

The Same Dimension uses a secret algorithm to generate beautiful new colors.



4291013795



4294760650



4291017891



4284570199



4288752896



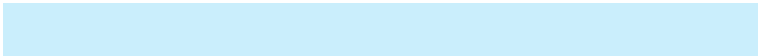
4280355072

Inverse Universe

The Inverse Universe completely reimagines the original color for something new.



4288920259



4291489532



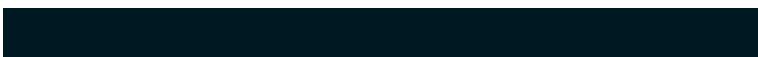
4288916163



4283915873



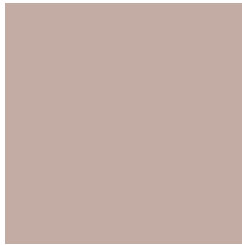
4278219681



4278196257

Previews

White Background



This preview shows how the Android color 4291013795 looks on a white background.

Color Contrast Check

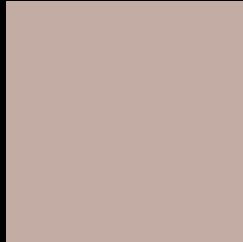
Large Text (above 18pt) WCAG AA × Fail

Any Text WCAG AA × Fail

Large Text (above 18pt) WCAG AAA × Fail

Any Text WCAG AAA × Fail

Black Background



This preview shows how the Android color 4291013795 looks on a black background.

Color Contrast Check

Large Text (above 18pt) WCAG AA ✓ Pass

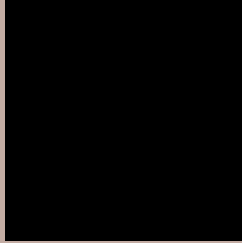
Any Text WCAG AA ✓ Pass

Large Text (above 18pt) WCAG AAA ✓ Pass

Any Text WCAG AAA ✓ Pass

If you want to check with other color combinations, try the [Color Contrast Checker](#).

Android 4291013795 Background



This preview shows how black text looks on a background with the Android color 4291013795.



This preview shows how white text looks on a background with the Android color 4291013795.

Color Blindness Simulation

Color vision deficiency is a very complex topic, and I could not describe the different causes any better than Wikipedia does, so if you want to learn more, you should check out their [article about color blindness](#).


Dichromacy



Original Color
4291013795

Protanopia
4290228389

Deuteranopia
4291275683



Tritanopia
4291144118

Trichromacy



Original Color
4291013795

Protanomaly
4290490276

Deuteranomaly
4291210147

Tritanomaly
4291078831

Monochromacy



Original Color
4291013795

Achromatopsia
4289901234

Achromatomaly
4290293933

CSS Examples

Text

The CSS property to change the color of the text to Android 4291013795 is called "color". The color property can be set on classes, ids or directly on the HTML element.

This example shows how text in the color `rgb(195, 172, 163)` looks like.

```
.text, #text, p{  
    color:rgb(195, 172, 163)  
}
```

If you want to add a text shadow in that color use the text-shadow property, you can generate a text shadow directly with our [CSS Text Shadow Generator](#).

Here you see how black text with a 4 pixel rgb(195, 172, 163) colored shadow looks like.

```
.shadow{ text-shadow: 4px 4px 2px rgb(195, 172, 163) }
```

Border

The CSS property to change the border of an element to Android 4291013795 is called "border". The border property can be set on classes, ids or directly on the HTML element.

This example shows the color as border, it can be applied via the CSS property "border" or "border-color".

```
.border, #border, table{ border:4px solid rgb(195, 172, 163) }
```

If only the border color should be changed use the property `border-color`.

```
.border{ border-color:rgb(195, 172, 163) }
```

If you want to add a box shadow in that color use:

Here you see how a box with a 4 pixel `rgb(195, 172, 163)` colored shadow looks like.

```
.boxshadow{ -moz-box-shadow:4px 4px 4px  
4px rgb(195, 172, 163); -webkit-box-  
shadow:4px 4px 4px 4px rgb(195, 172, 163);  
box-shadow:4px 4px 4px 4px rgb(195, 172,  
163) }
```

Background

The CSS property to change the background color of an element to Android 4291013795 is called "background". The background property can be set on classes, ids or directly on the HTML element.

```
.background, #background, body{  
background: rgb(195, 172, 163) }
```

If only the background color should be changed can be used:

```
.background{ background-color: rgb(195,  
172, 163) }
```

This example shows the color as background, it is applied via the CSS property "background".

To optimize and compress your CSS code, you can use our [online CSS compressor and optimizer](#) based on csstidy. If you want to create a linear or radial gradient as background or border, check our [CSS Gradient Generator](#).

Hey! You found this booklet interesting? Support Converting Colors with the new Membership Option!

The pro membership hides all ads, plus gives you double the colors in the color bucket, and more awesome pro features!

[Learn more, Memberships starting at \\$2.50/m!](#)

**Follow me
on Twitter!**

@ConvertingColor