

Converting Colors

Android(4291056770)

Have a look what the booklet for
Android(4291056770) contains.

Android(4291056770)	3
<i>Conversions</i>	4
<i>Details</i>	6
<i>Harmonies</i>	11
<i>Previews</i>	23
<i>Color Blindness Simulation</i>	26
<i>CSS Examples</i>	29

Color

Android(4291056770)

Conversions

Conversions Part 1

Format	Color
Hex	C45482
RGB	196, 84, 130
RGB Percent	77%, 33%, 51%
CMY	0.2314, 0.6706, 0.4902
CMYK	0.00, 0.57, 0.34, 0.23
HSL	335°, 49%, 55%
HSV	335°, 57%, 77%
XYZ	29.9645, 19.6881, 23.3400
YIQ	122.7320, 51.9860, 38.0500

Conversions

Conversions Part 2

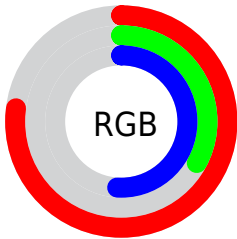
Format	Color
R_{YB}	196, 84, 130
Decimal	12866690
CIE _{Lab}	51.48, 49.42, -3.35
CIE _{LCh}	51, 49.537, 356.127
Yxy	19.6881, 0.4105, 0.2697
Android (android.graphics.Color)	4291056770 (0xFFC45482)
YUV	122.7320, 3.5831, 64.2560
Hunter-Lab	44.3713, 42.8937, -0.1275

Details

The Android color **4291056770** is a dark color, and the websafe version is hex **CC6699**. The color can be described as middle muted rose. A complement of this color would be **4283745430**, and the grayscale version is **4286282619**.

A 20% lighter version of the original color is **4294937271**, and **4287306833** is the 20% darker color. If you saturate the color by 10%, you get **4291051638**, and if you desaturate by 10%, it is **4291061902**.

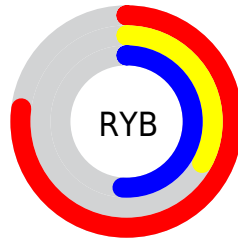
Distribution



Red (77%)

Green (33%)

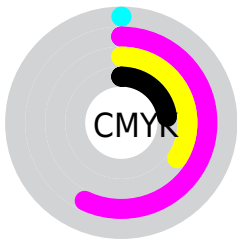
Blue (51%)



Red (77%)

Yellow (33%)

Blue (51%)

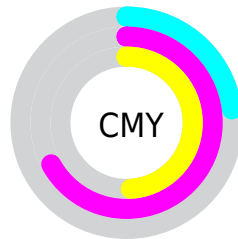


Cyan (0%)

Magenta (57%)

Yellow (34%)

Black (23%)



Cyan (23%)

Magenta (67%)

Yellow (49%)

Brightness & Saturation Gradients

These gradients show how the Android color 4291056770 changes by changing the brightness by 10 percent. The first figure shows a shift by +10% for each color and the second figure -10%.

Similar to the brightness gradients but the following saturation gradients show a change of the Android color 4291056770 by changing the saturation by 10% instead.

 4291056770

 4291056770

4294967295

 4289149289

 4294937271

 4287306833

 4294944210

 4285464634

 4294951663

 4283629605

 4294958847

 4282056719


 4294966527

 4279894017

 4278190080

 4291056770

 4291056770

 4291051638

 4291061902

 4291046763

 4291066777

 4291041631

 4291071909

 4291036756

 4291076784

 4291035216

 4291081916

 4291087047

 4291091923

 4291097054

 4291100650

Harmonies

Analogous

The Analogous color harmony consists of three colors that are next to each other on the color wheel.



4289290410



4291056770



4291254104

Triad

The Triadic color harmony groups three colors that are evenly spaced from another and form a triangle on the color wheel.



4291056770



4285367080



4278225856

Complementary

The Complementary color scheme is a pair of colors which are on the opposite of each other on the color wheel.



4291056770



4283745430

Split Complementary

Split-complementary colors differ from the complementary color scheme. The scheme consists of three colors, the original color and two neighbors of the complement color.



4278226847



4291056770



4281633609

Square

The Square scheme is like the rectangle color scheme, but the four colors are evenly spaced on the color wheel.



4291056770



4288050975



4278226804



4278223311

Rectangle

The Rectangle color scheme consists of four colors that form a rectangle on the color wheel.



4291056770



4290601279



4278226804



4278226359

Sweetspot

The Sweet Spot groups the original color and five complimentary colors.



4291056770



4294956261



4287976644



4286604912



4278190080



4286611584

Same Dimension

The Same Dimension uses a secret algorithm to generate beautiful new colors.



4291056770



4294922135



4291059028



4284569435



4288741442



4280352782

Inverse Universe

The Inverse Universe completely reimagines the original color for something new.



4291056770



4294922135



4283743172



4284569435



4288741442



4280352782

Previews

White Background



This preview shows how the Android color 4291056770 looks on a white background.

Color Contrast Check

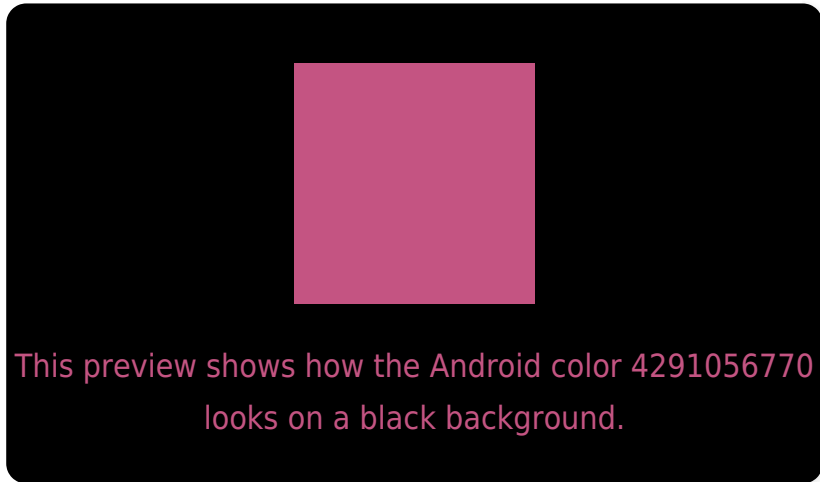
Large Text (above 18pt) WCAG AA ✓ Pass

Any Text WCAG AA ✗ Fail

Large Text (above 18pt) WCAG AAA ✗ Fail

Any Text WCAG AAA ✗ Fail

Black Background



Color Contrast Check

Large Text (above 18pt) WCAG AA ✓ Pass

Any Text WCAG AA ✓ Pass

Large Text (above 18pt) WCAG AAA ✓ Pass

Any Text WCAG AAA × Fail

If you want to check with other color combinations, try the [Color Contrast Checker](#).

Android 4291056770 Background



This preview shows how black text looks on a background with the Android color 4291056770.



This preview shows how white text looks on a background with the Android color 4291056770.

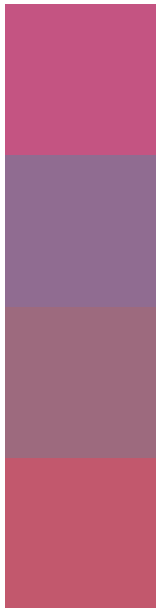
Color Blindness Simulation

Color vision deficiency is a very complex topic, and I could not describe the different causes any better than Wikipedia does, so if you want to learn more, you should check out their [article about color blindness](#).

Dichromacy



Trichromacy



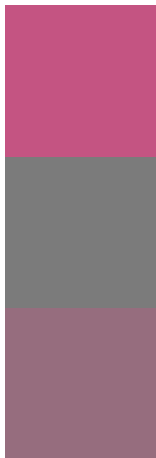
Original Color
4291056770

Protanomaly
4287655057

Deuteranomaly
4288506494

Tritanomaly
4290926701

Monochromacy



Original Color
4291056770

Achromatopsia
4286282619

Achromatomaly
4288048510

CSS Examples

Text

The CSS property to change the color of the text to Android 4291056770 is called "color". The color property can be set on classes, ids or directly on the HTML element.

This example shows how text in the color `rgb(196, 84, 130)` looks like.

```
.text, #text, p{  
    color:rgb(196, 84, 130)  
}
```

If you want to add a text shadow in that color use the text-shadow property, you can generate a text shadow directly with our [CSS Text Shadow Generator](#).

Here you see how black text with a 4 pixel rgb(196, 84, 130) colored shadow looks like.

```
.shadow{ text-shadow: 4px 4px 2px rgb(196, 84, 130) }
```

Border

The CSS property to change the border of an element to Android 4291056770 is called "border". The border property can be set on classes, ids or directly on the HTML element.

This example shows the color as border, it can be applied via the CSS property "border" or "border-color".

```
.border, #border, table{ border:4px solid rgb(196, 84, 130) }
```

If only the border color should be changed use the property `border-color`.

```
.border{ border-color:rgb(196, 84, 130) }
```

If you want to add a box shadow in that color use:

Here you see how a box with a 4 pixel `rgb(196, 84, 130)` colored shadow looks like.

```
.boxshadow{ -moz-box-shadow:4px 4px 4px  
4px rgb(196, 84, 130); -webkit-box-  
shadow:4px 4px 4px 4px rgb(196, 84, 130);  
box-shadow:4px 4px 4px 4px rgb(196, 84,  
130) }
```

Background

The CSS property to change the background color of an element to Android 4291056770 is called "background". The background property can be set on classes, ids or directly on the HTML element.

```
.background, #background, body{  
background: rgb(196, 84, 130) }
```

If only the background color should be changed can be used:

```
.background{ background-color: rgb(196, 84,  
130) }
```

This example shows the color as background, it is applied via the CSS property "background".

To optimize and compress your CSS code, you can use our [online CSS compressor and optimizer](#) based on csstidy. If you want to create a linear or radial gradient as background or border, check our [CSS Gradient Generator](#).

Hey! You found this booklet interesting? Support Converting Colors with the new Membership Option!

The pro membership hides all ads, plus gives you double the colors in the color bucket, and more awesome pro features!

[Learn more, Memberships starting at \\$2.50/m!](#)

**Follow me
on Twitter!**

@ConvertingColor