

Converting Colors

Android(4291071629)

Have a look what the booklet for
Android(4291071629) contains.

Android(4291071629)	3
<i>Conversions</i>	4
<i>Details</i>	6
<i>Harmonies</i>	11
<i>Previews</i>	23
<i>Color Blindness Simulation</i>	26
<i>CSS Examples</i>	29

Color

Android(4291071629)

Conversions

Conversions Part 1

Format	Color
Hex	C48E8D
RGB	196, 142, 141
RGB Percent	77%, 56%, 55%
CMY	0.2314, 0.4431, 0.4471
CMYK	0.00, 0.28, 0.28, 0.23
HSL	1°, 32%, 66%
HSV	1°, 28%, 77%
XYZ	37.2457, 33.0049, 29.6068
YIQ	158.0320, 32.5050, 11.1370

Conversions

Conversions Part 2

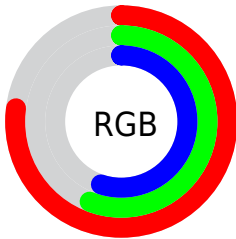
Format	Color
RYB	196, 142, 141
Decimal	12881549
CIELab	64.16, 20.35, 8.64
CIElCh	64, 22.111, 23.014
Yxy	33.0049, 0.3730, 0.3305
Android (android.graphics.Color)	4291071629 (0xFFC48E8D)
YUV	158.0320, -8.3968, 33.2979
Hunter-Lab	57.4498, 15.1872, 9.6598

Details

The Android color `4291071629` is a light color, and the websafe version is hex `CC9999`. A complement of this color would be `4287480772`, and the grayscale version is `4288585374`.

A 20% lighter version of the original color is `4294886595`, and `4287454043` is the 20% darker color. If you saturate the color by 10%, you get `4291066745`, and if you desaturate by 10%, it is `4291076513`.

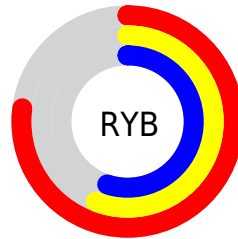
Distribution



Red (77%)

Green (56%)

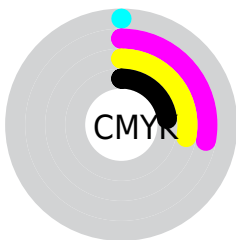
Blue (55%)



Red (77%)

Yellow (56%)

Blue (55%)

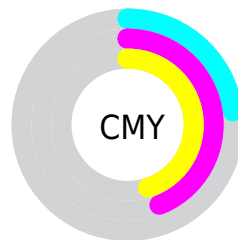


Cyan (0%)

Magenta (28%)

Yellow (28%)

Black (23%)



Cyan (23%)

Magenta (44%)

Yellow (45%)

Brightness & Saturation Gradients

These gradients show how the Android color 4291071629 changes by changing the brightness by 10 percent. The first figure shows a shift by +10% for each color and the second figure -10%.

Similar to the brightness gradients but the following saturation gradients show a change of the Android color 4291071629 by changing the saturation by 10% instead.



4291071629



4291071629

4294967295



4289229939



4294886595



4287454043



4294959326



4285743940



4294966779



4284034349



4282390297



4280942592



4278190080



4291071629



4291071629



4291066745



4291076513

 4291061862

 4291081396

 4291056722

 4291086536

 4291051839

 4291091419

 4291046955

 4291096303

 4291042071

 4291100671

 4291036932

 4291036160

Harmonies

Analogous

The Analogous color harmony consists of three colors that are next to each other on the color wheel.



4290809505



4291071629



4290679421

Triad

The Triadic color harmony groups three colors that are evenly spaced from another and form a triangle on the color wheel.



4291071629



4286882947



4286488514

Complementary

The Complementary color scheme is a pair of colors which are on the opposite of each other on the color wheel.



4291071629



4287480772

Split Complementary

Split-complementary colors differ from the complementary color scheme. The scheme consists of three colors, the original color and two neighbors of the complement color.



4285047994



4291071629



4285507222

Square

The Square scheme is like the rectangle color scheme, but the four colors are evenly spaced on the color wheel.



4291071629



4288323447



4284720810



4288256192

Rectangle

The Rectangle color scheme consists of four colors that form a rectangle on the color wheel.



4291071629



4290025078



4284720810



4285899201

Sweetspot

The Sweet Spot groups the original color and five complimentary colors.



4291071629



4294962155



4291071427



4286608243



4278190080



4286611584

Same Dimension

The Same Dimension uses a secret algorithm to generate beautiful new colors.



4291071629



4294945448



4291078541



4284569431



4288742144



4280353024

Inverse Universe

The Inverse Universe completely reimagines the original color for something new.



4287480772



4289265151



4287473860



4283916641



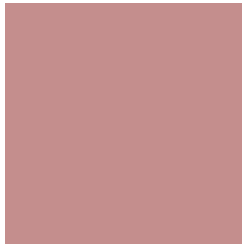
4278230689



4278198561

Previews

White Background



This preview shows how the Android color 4291071629 looks on a white background.

Color Contrast Check

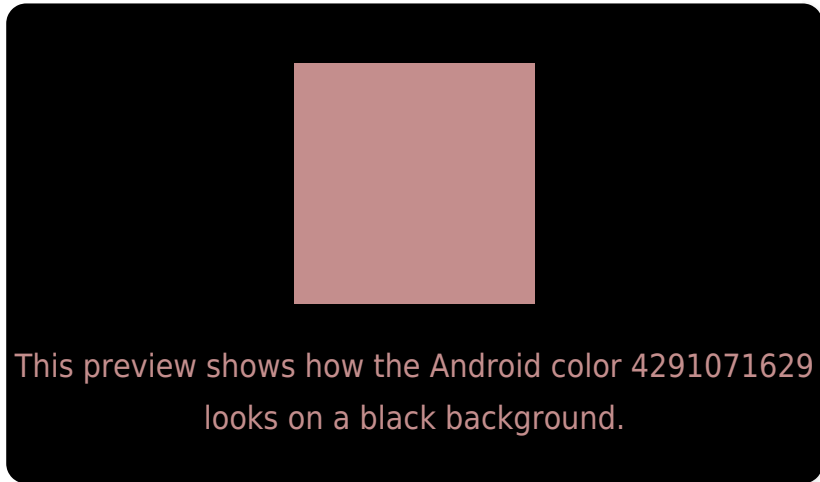
Large Text (above 18pt) WCAG AA × Fail

Any Text WCAG AA × Fail

Large Text (above 18pt) WCAG AAA × Fail

Any Text WCAG AAA × Fail

Black Background



Color Contrast Check

Large Text (above 18pt) WCAG AA ✓ Pass

Any Text WCAG AA ✓ Pass

Large Text (above 18pt) WCAG AAA ✓ Pass

Any Text WCAG AAA ✓ Pass

If you want to check with other color combinations, try the [Color Contrast Checker](#).

Android 4291071629 Background



This preview shows how black text looks on a background with the Android color 4291071629.



This preview shows how white text looks on a background with the Android color 4291071629.

Color Blindness Simulation

Color vision deficiency is a very complex topic, and I could not describe the different causes any better than Wikipedia does, so if you want to learn more, you should check out their [article about color blindness](#).


Dichromacy



Original Color
4291071629

Protanopia
4288715668

Deuteranopia
4289828491



Tritanopia
4291136663

Trichromacy



Original Color
4291071629

Protanomaly
4289566353

Deuteranomaly
4290286476

Tritanomaly
4291136915

Monochromacy



Original Color
4291071629

Achromatopsia
4288585374

Achromatomaly
4289501336

CSS Examples

Text

The CSS property to change the color of the text to Android 4291071629 is called "color". The color property can be set on classes, ids or directly on the HTML element.

This example shows how text in the color `rgb(196, 142, 141)` looks like.

```
.text, #text, p{  
    color:rgb(196, 142, 141)  
}
```

If you want to add a text shadow in that color use the text-shadow property, you can generate a text shadow directly with our [CSS Text Shadow Generator](#).

Here you see how black text with a 4 pixel rgb(196, 142, 141) colored shadow looks like.

```
.shadow{ text-shadow: 4px 4px 2px rgb(196, 142, 141) }
```

Border

The CSS property to change the border of an element to Android 4291071629 is called "border". The border property can be set on classes, ids or directly on the HTML element.

This example shows the color as border, it can be applied via the CSS property "border" or "border-color".

```
.border, #border, table{ border:4px solid rgb(196, 142, 141) }
```

If only the border color should be changed use the property `border-color`.

```
.border{ border-color:rgb(196, 142, 141) }
```

If you want to add a box shadow in that color use:

Here you see how a box with a 4 pixel `rgb(196, 142, 141)` colored shadow looks like.

```
.boxshadow{ -moz-box-shadow:4px 4px 4px  
4px rgb(196, 142, 141); -webkit-box-  
shadow:4px 4px 4px 4px rgb(196, 142, 141);  
box-shadow:4px 4px 4px 4px rgb(196, 142,  
141) }
```

Background

The CSS property to change the background color of an element to Android 4291071629 is called "background". The background property can be set on classes, ids or directly on the HTML element.

```
.background, #background, body{  
background: rgb(196, 142, 141) }
```

If only the background color should be changed can be used:

```
.background{ background-color: rgb(196,  
142, 141) }
```

This example shows the color as background, it is applied via the CSS property "background".

To optimize and compress your CSS code, you can use our [online CSS compressor and optimizer](#) based on csstidy. If you want to create a linear or radial gradient as background or border, check our [CSS Gradient Generator](#).

Hey! You found this booklet interesting? Support Converting Colors with the new Membership Option!

The pro membership hides all ads, plus gives you double the colors in the color bucket, and more awesome pro features!

[Learn more, Memberships starting at \\$2.50/m!](#)

**Follow me
on Twitter!**

@ConvertingColor